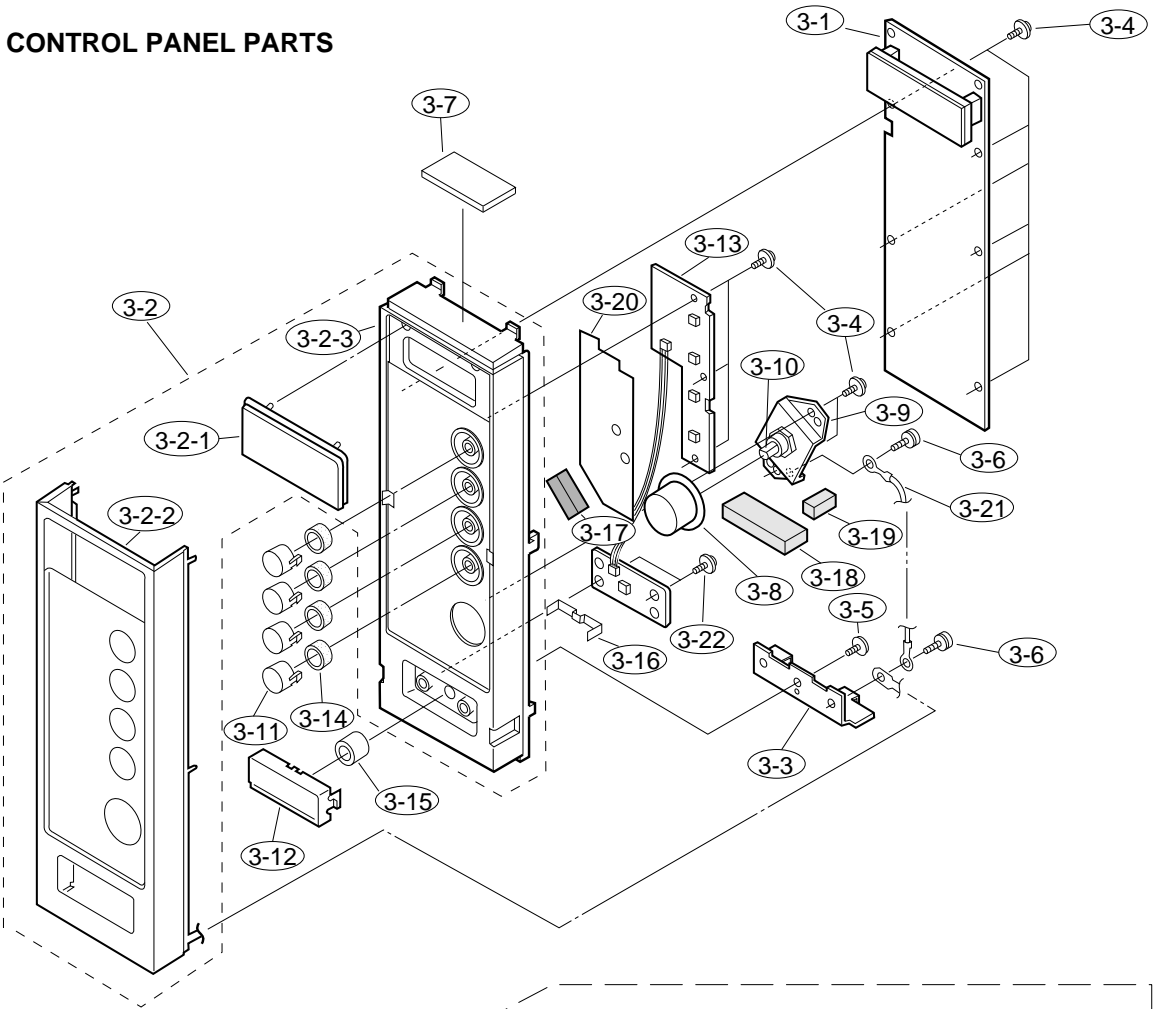


This exploded view diagram illustrates the assembly of a refrigerator, showing the main body, door, and internal components. The diagram is labeled with various parts and their assembly order, indicated by numbers in circles. The main body is shown in the center, with the door assembly to the right. The door assembly includes the door panel, inner door, and various components like the door hinge, door seal, and door handle. The main body includes the evaporator, condenser, compressor, and various internal components like the defrost timer, defrost heater, and defrost thermostat. The diagram also shows the installation of the door into the main body, including the door hinge and door seal. The assembly order is indicated by numbers in circles, with 1-1 being the first part to be installed and 7-24 being the last part to be installed. The diagram is a technical drawing showing the exploded view of the refrigerator assembly.

CONTROL PANEL PARTS



DOOR PARTS

