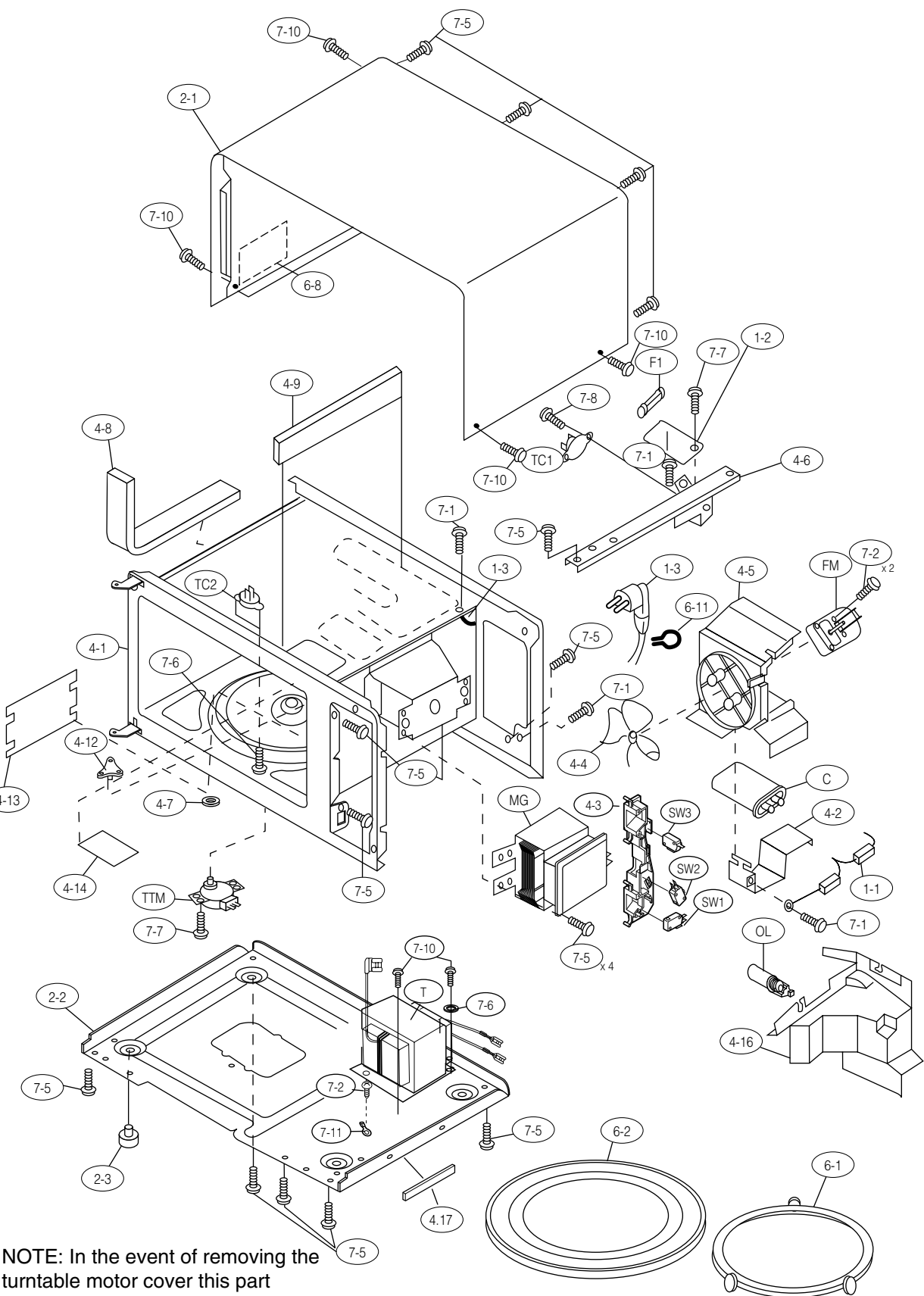
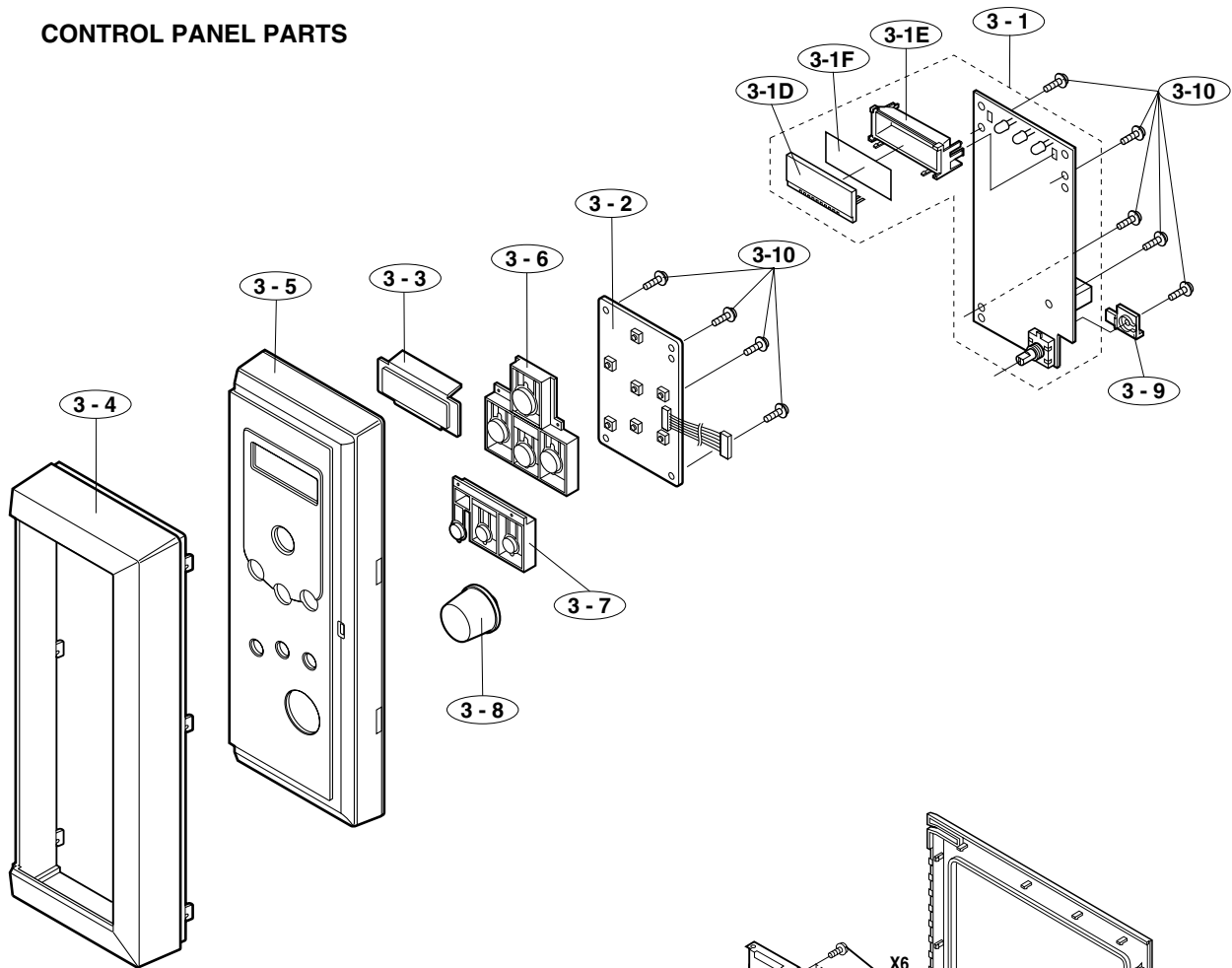


## CABINET AND UNIT CHASSIS PARTS

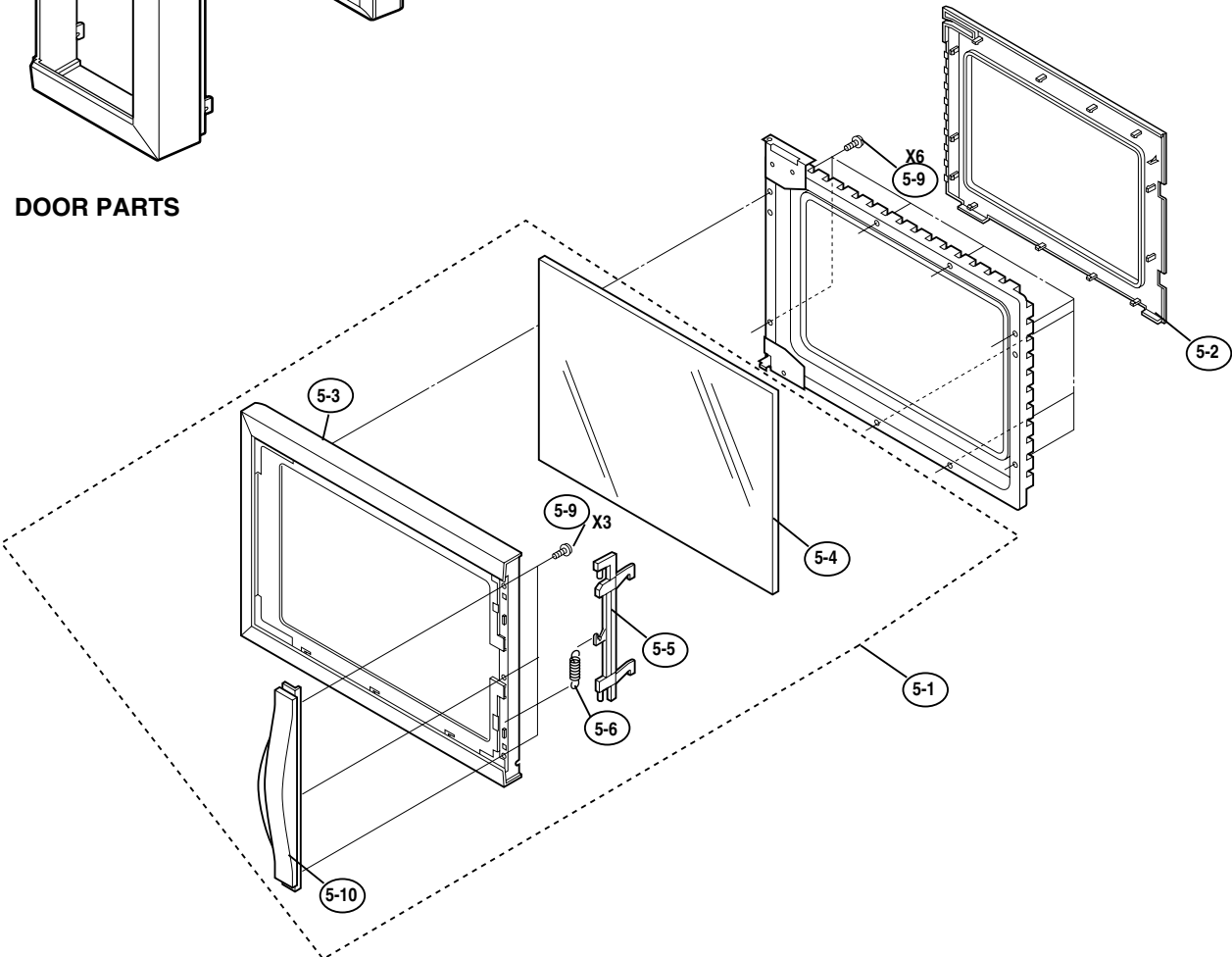


**NOTE:** In the event of removing the turntable motor cover this part should be refitted using screw connection: LX-EZA045WRE0(7-11)

CONTROL PANEL PARTS

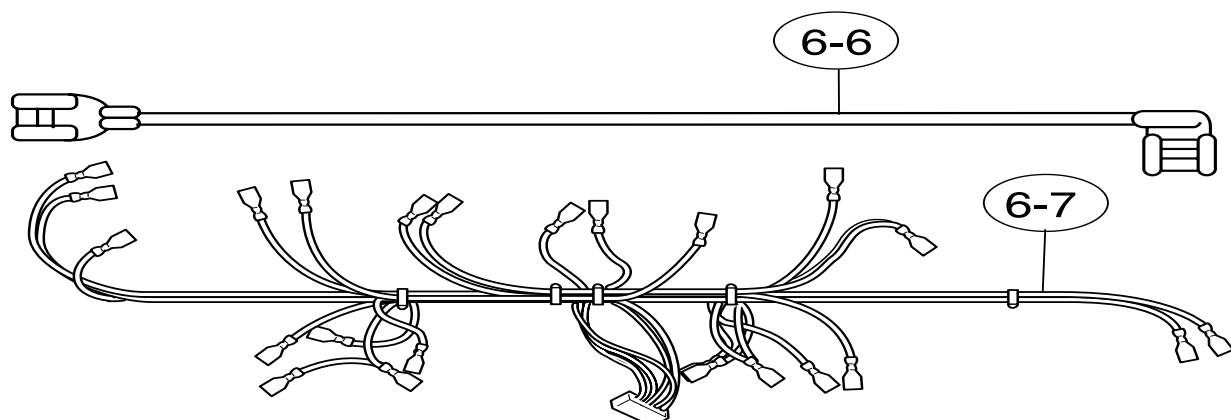


DOOR PARTS



# MISCELLANEOUS/PACKING AND ACCESSORIES

## MISCELLANEOUS



Actual wire harness may be different from illustration.

## PACKING AND ACCESSORIES

