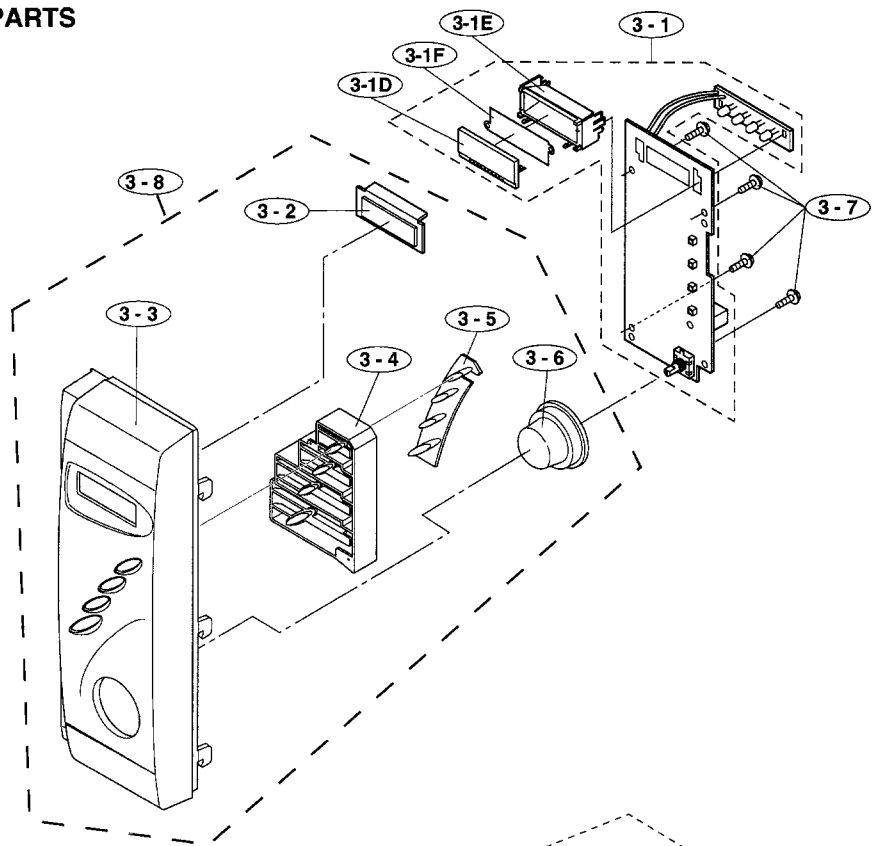
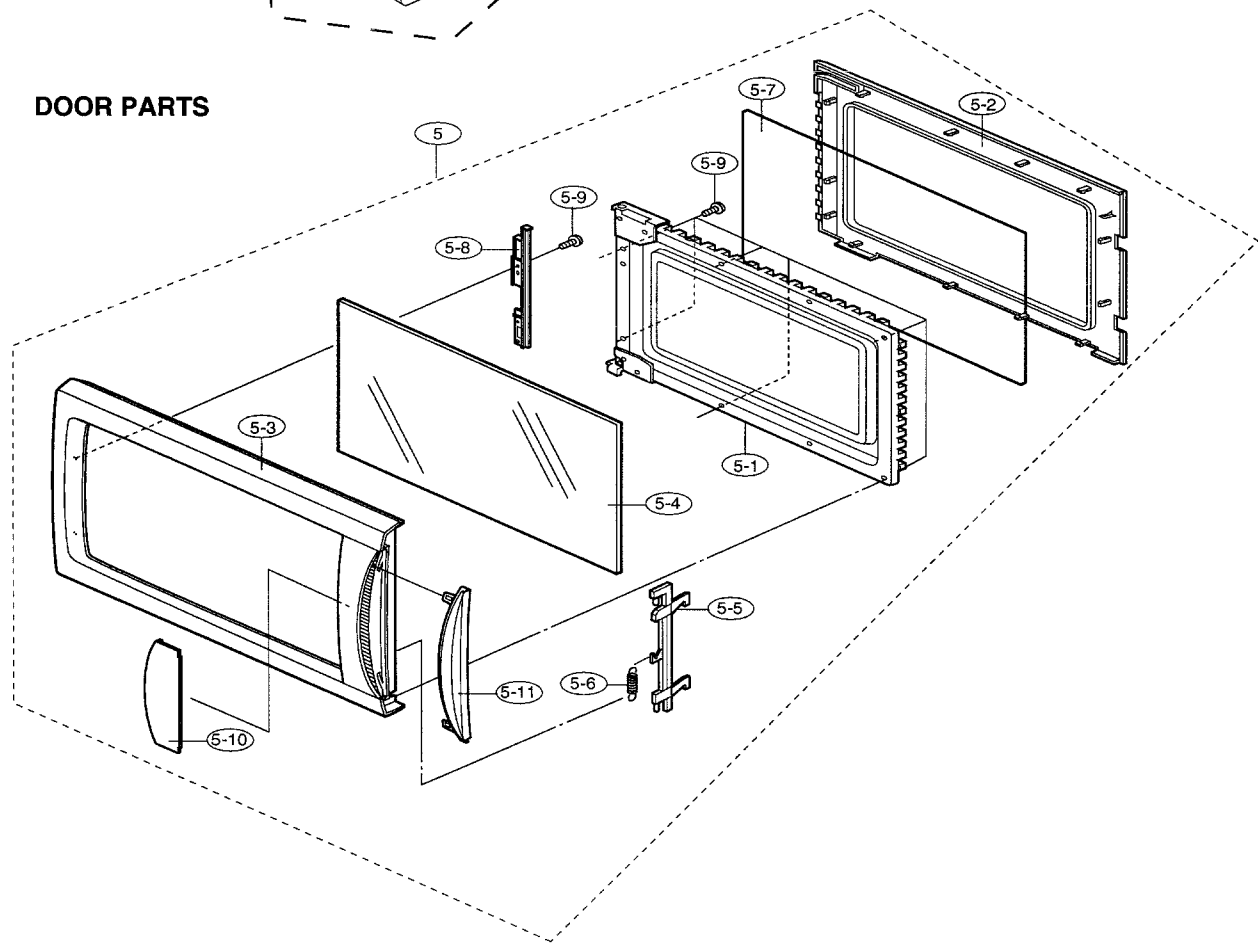


NOTE: In the event of removing the turntable motor cover this part should be refitted using screw connection: LX-CZA030WRE0 (7-12)

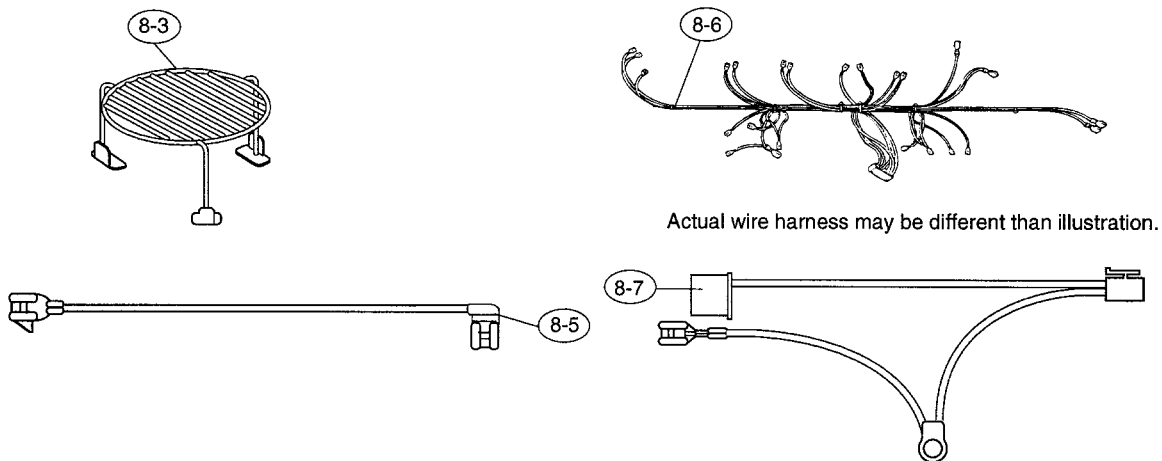
CONTROL PANEL PARTS



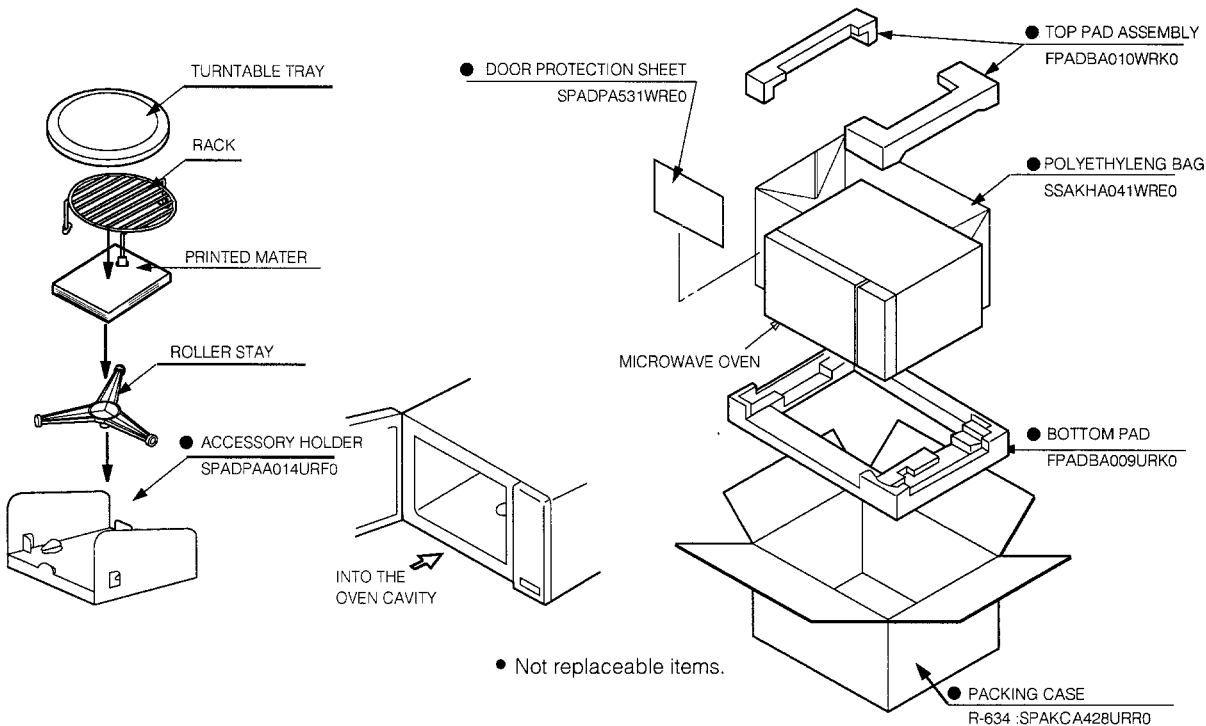
DOOR PARTS



MISCELLANEOUS



PACKING AND ACCESSORIES



N.B: BEFORE PACKING THE BROWN MICROWAVE OVENS A BROWN PAPER SHEET IS TO BE PLACED ON TOP OF THE OVEN