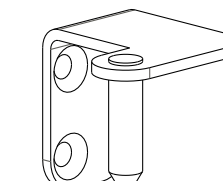


147



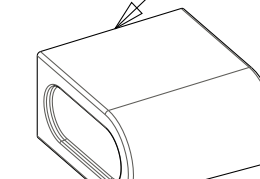
823



459



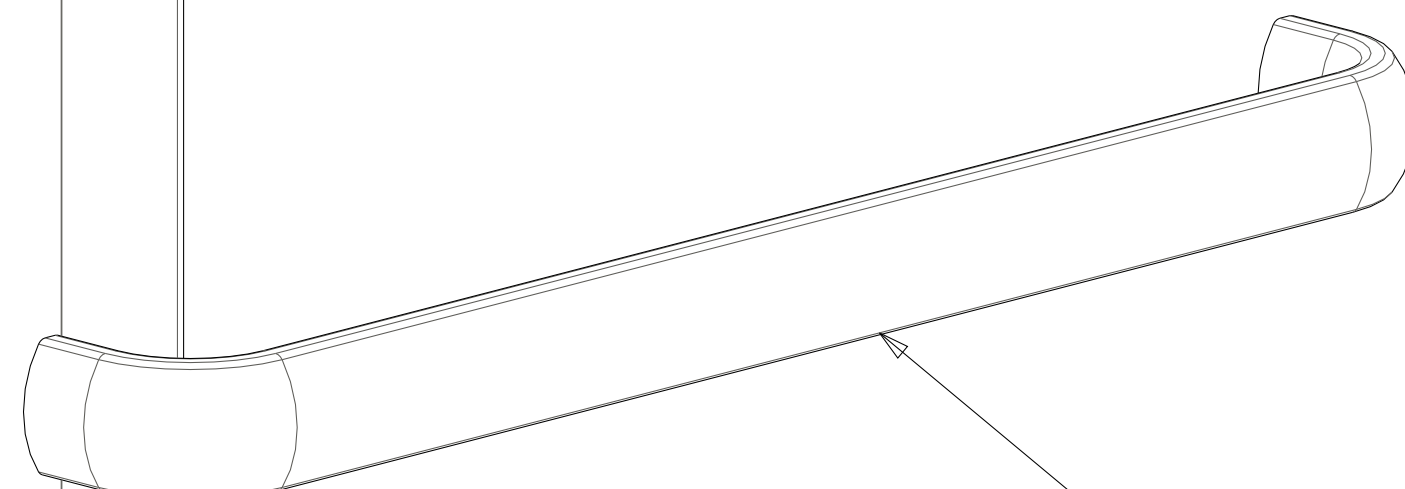
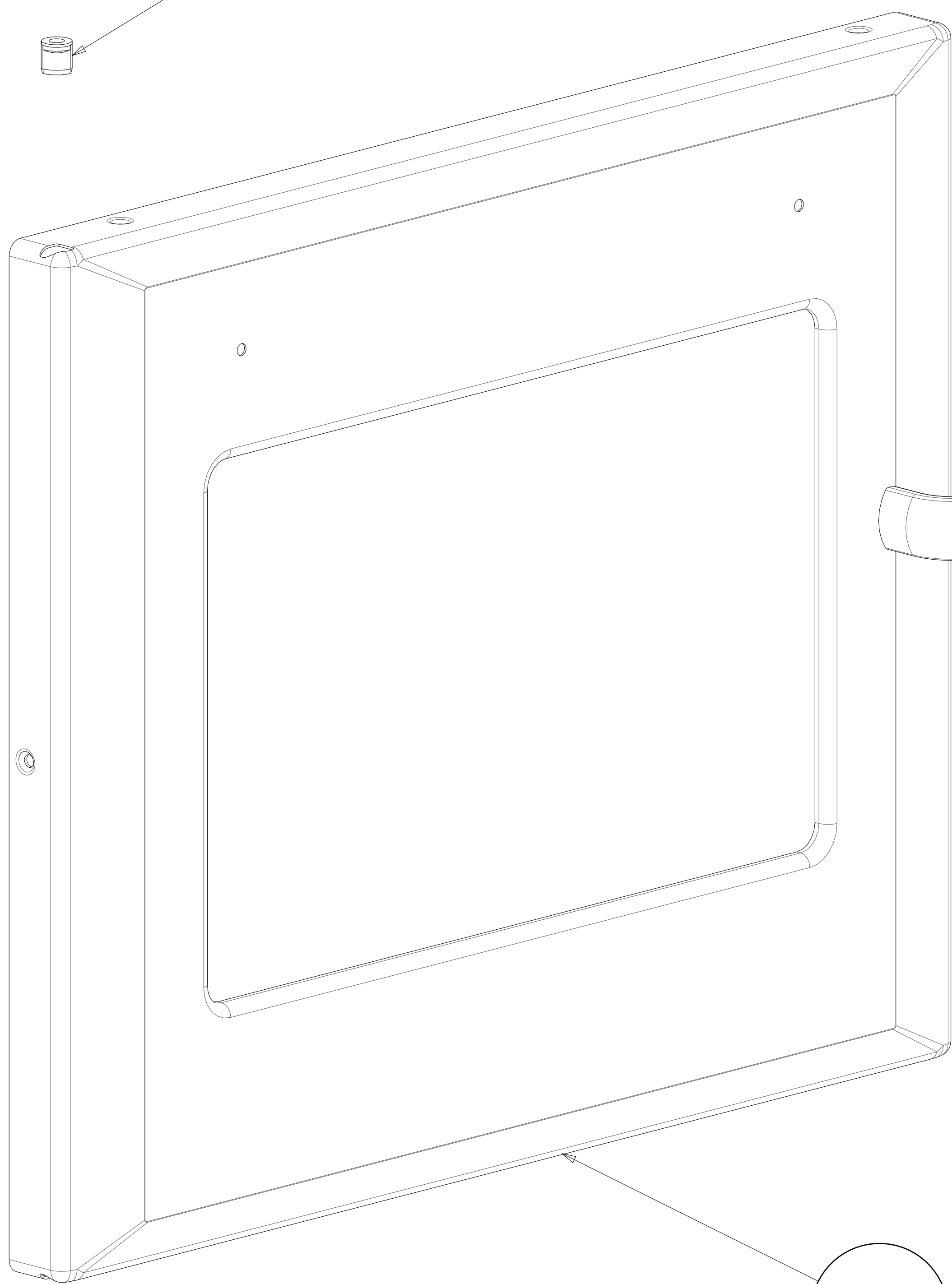
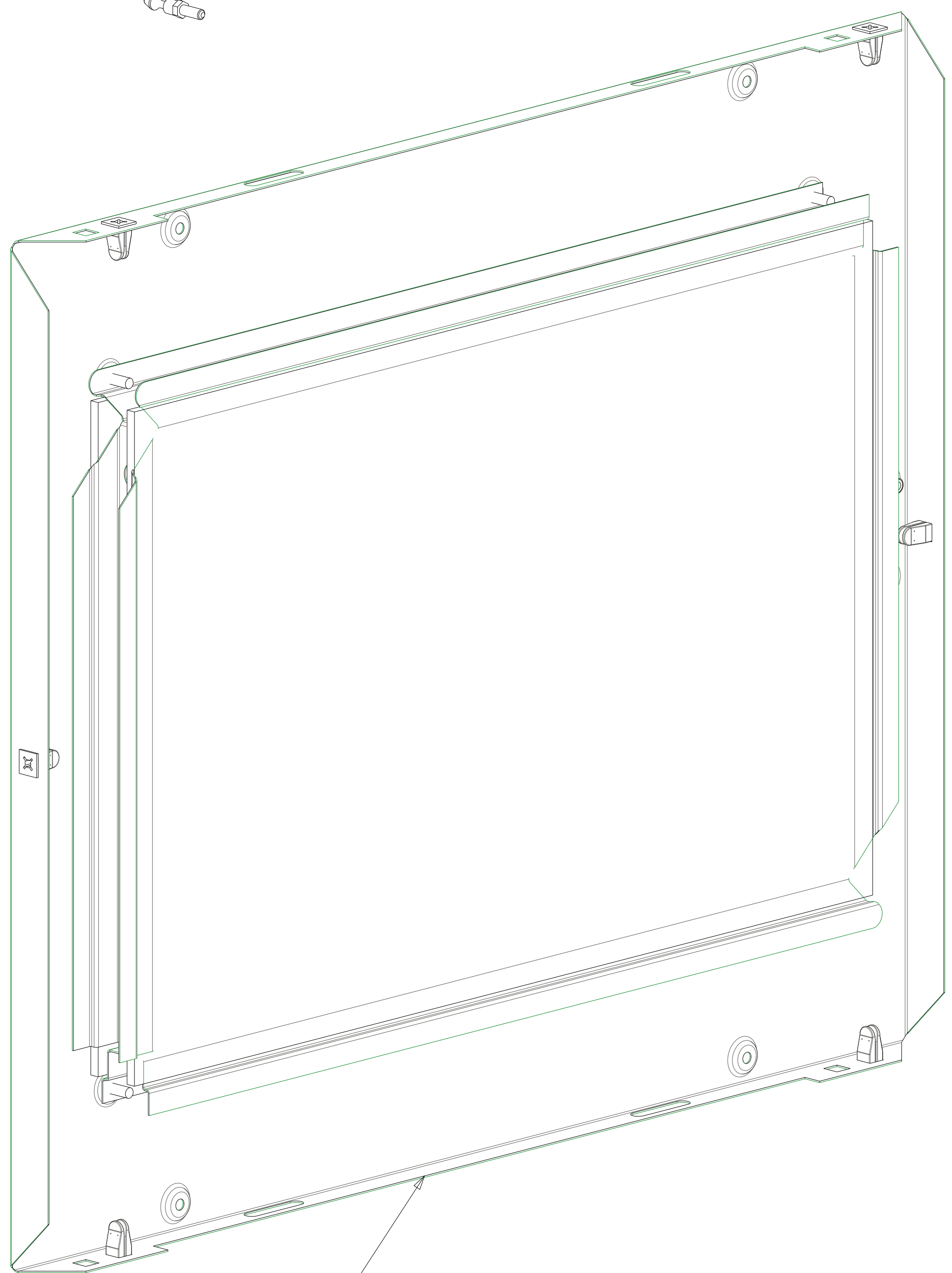
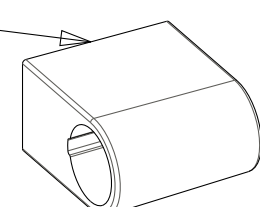
026



432



428



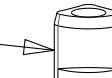
428

ALTERNATIVE HANDLE DESIGN

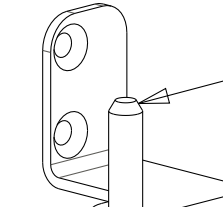
249

248

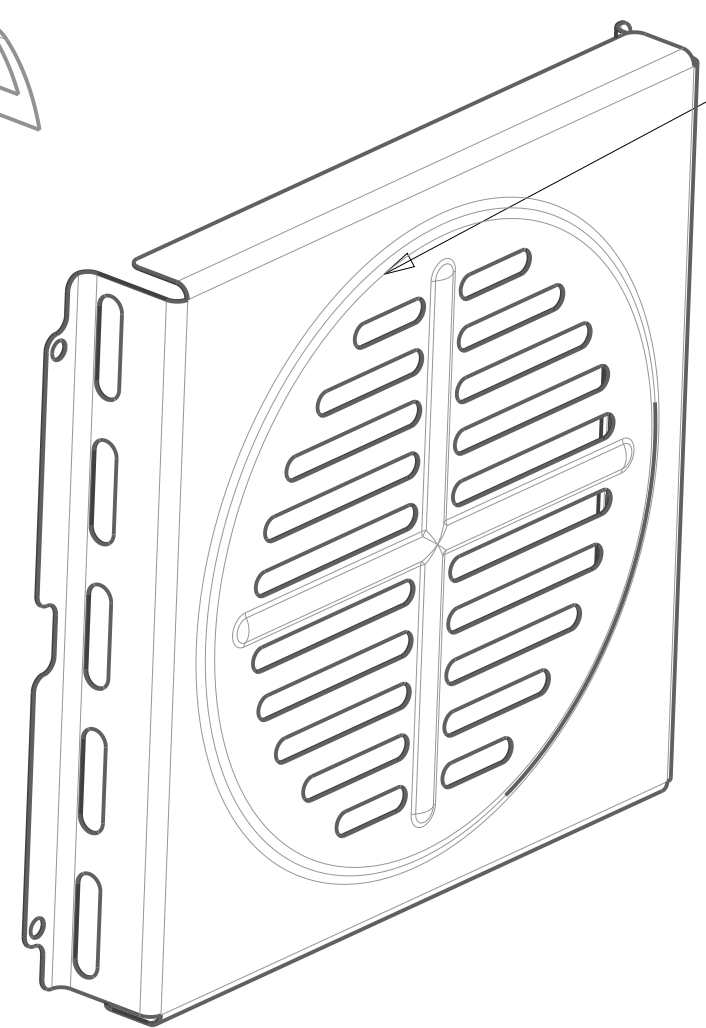
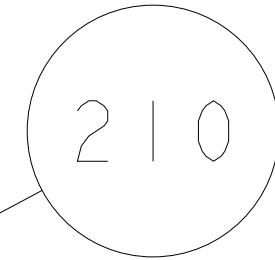
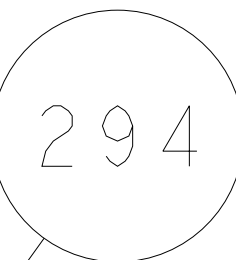
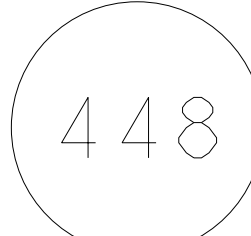
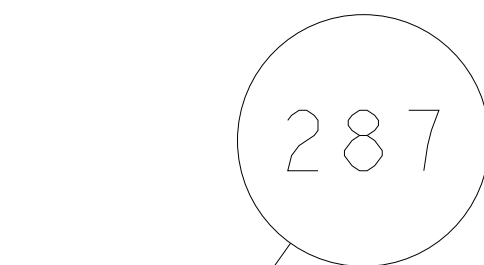
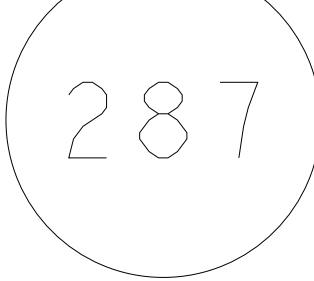
026



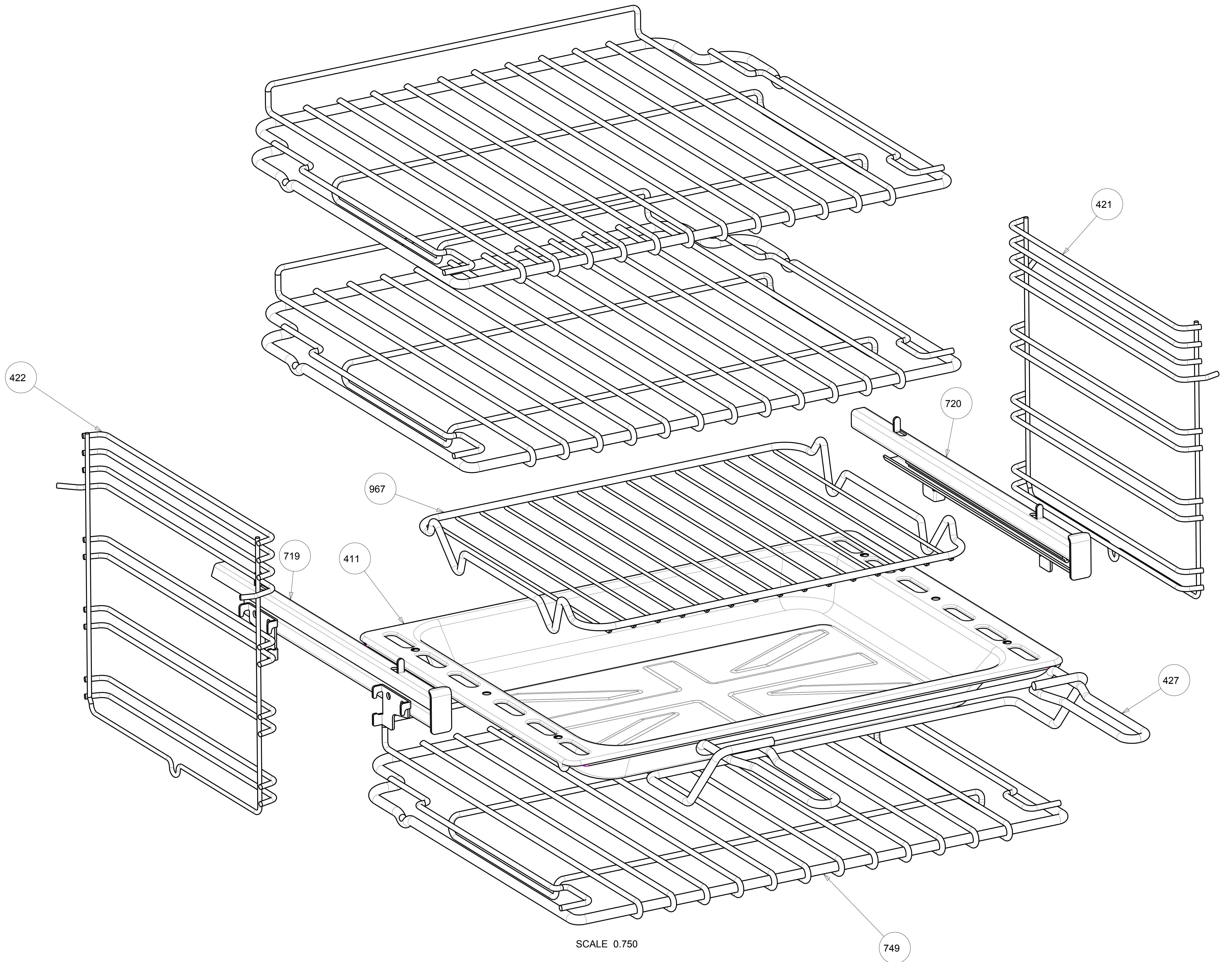
458



A technical line drawing of a rectangular heating element. It features a flat rectangular coil of resistance wire. One end of the coil is connected to a metal mounting bracket. This bracket has four circular holes for screws and two electrical terminals (screws) for wiring. A leader line points from the bottom left corner of the coil towards a circular inset, indicating a detailed view of the coil's construction.

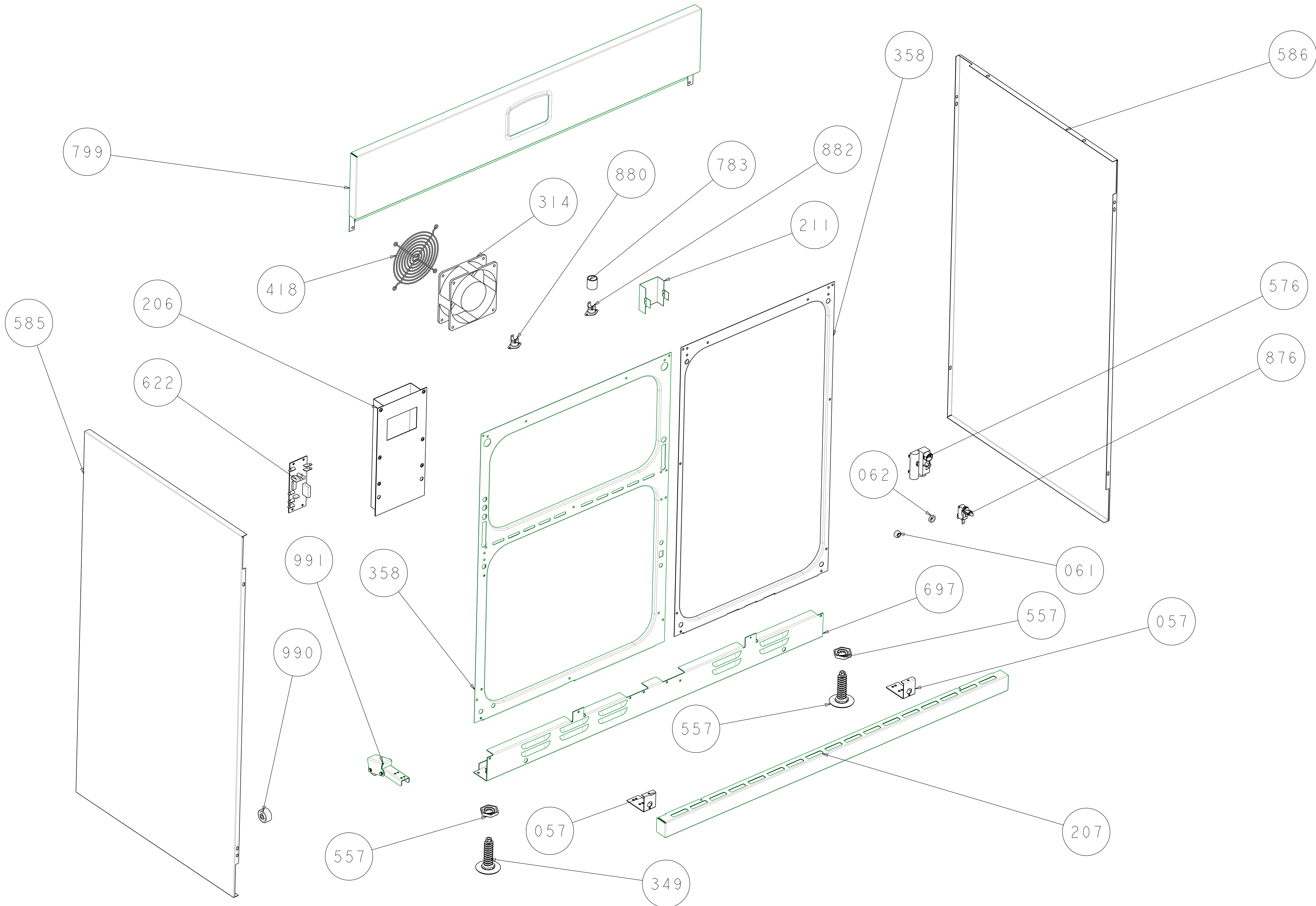


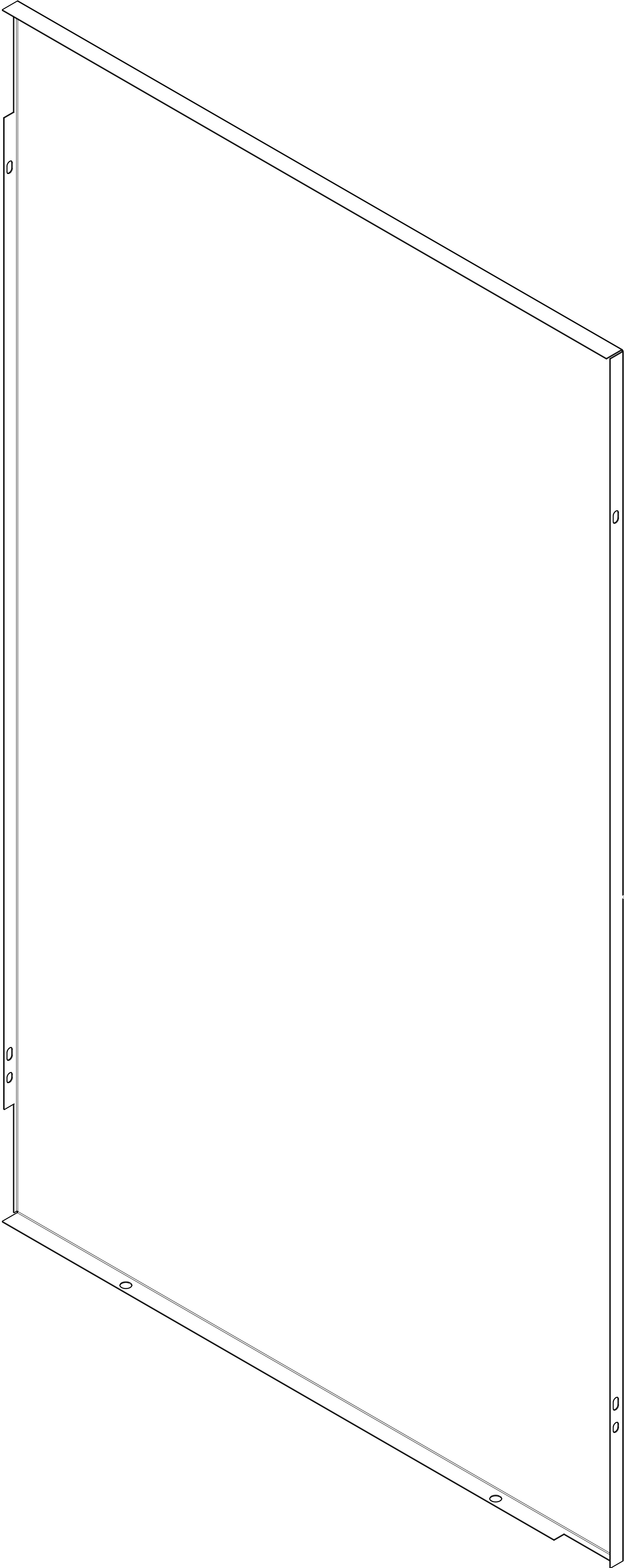




SCALE 0.750







0585