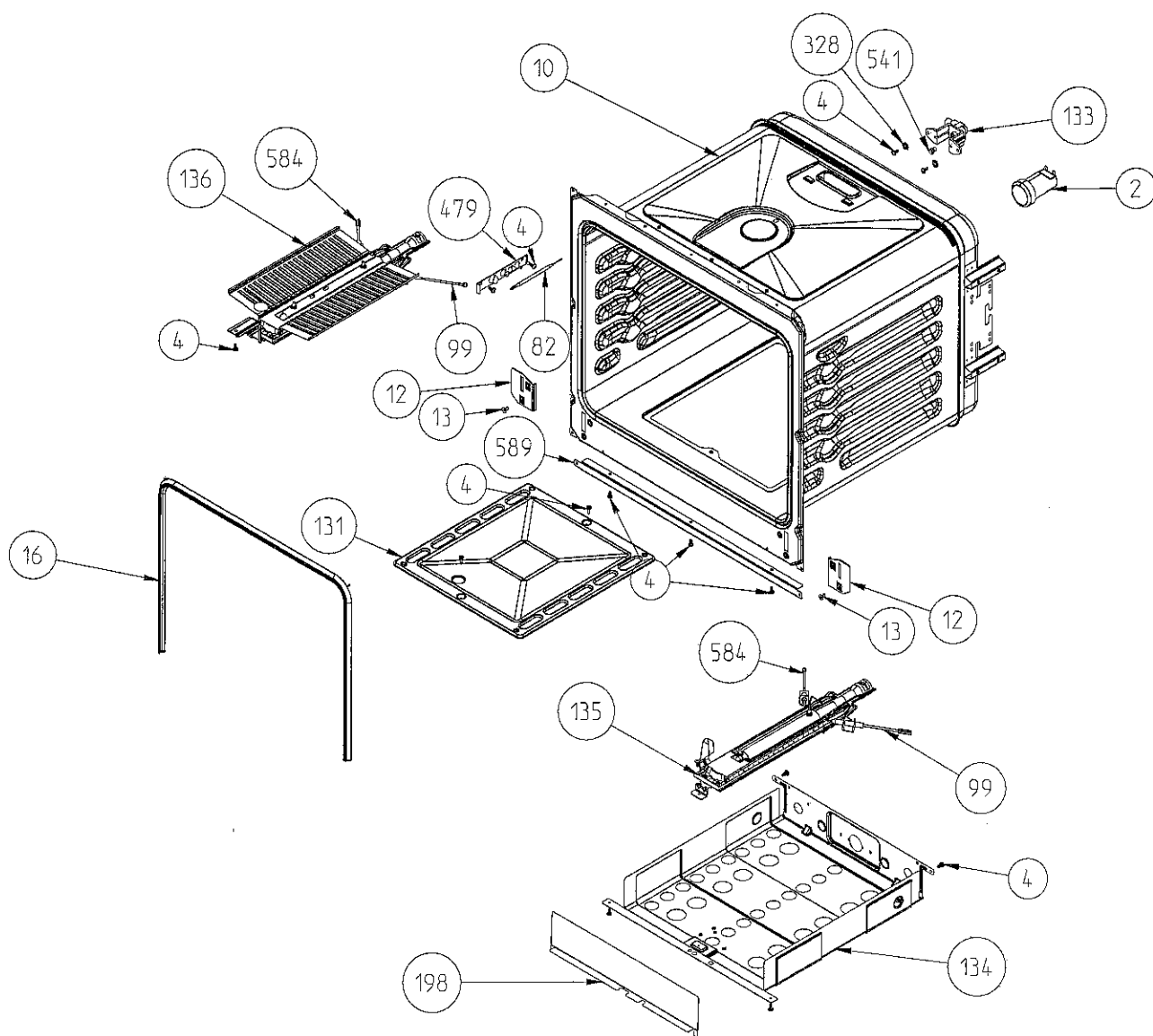


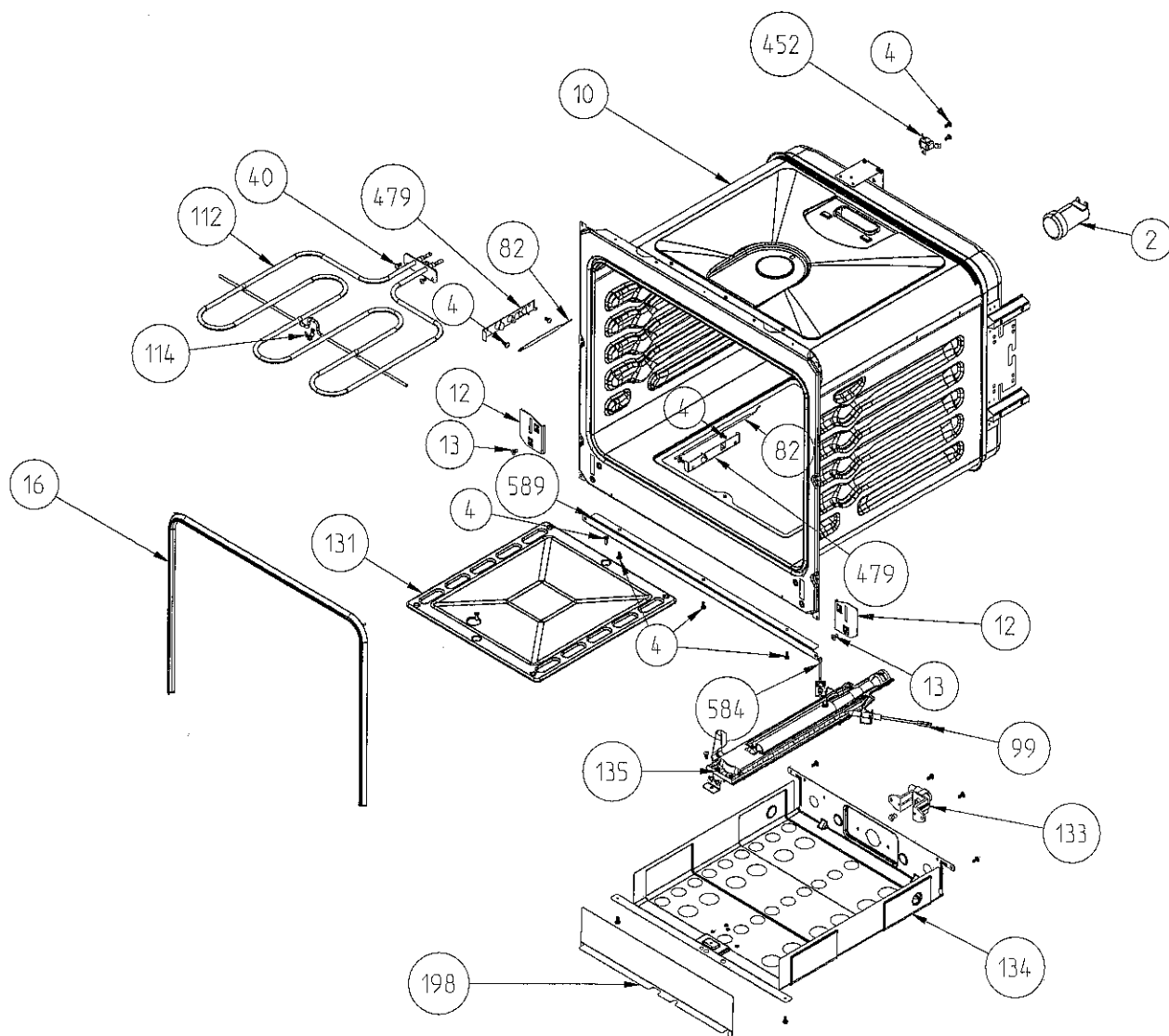
# 90 CM FREE STANDING BOTTLE COMPARTMENT COOKER CAVITY ASSEMBLY



GAS OVEN GAS GRILL CAVITY ASSEMBLY

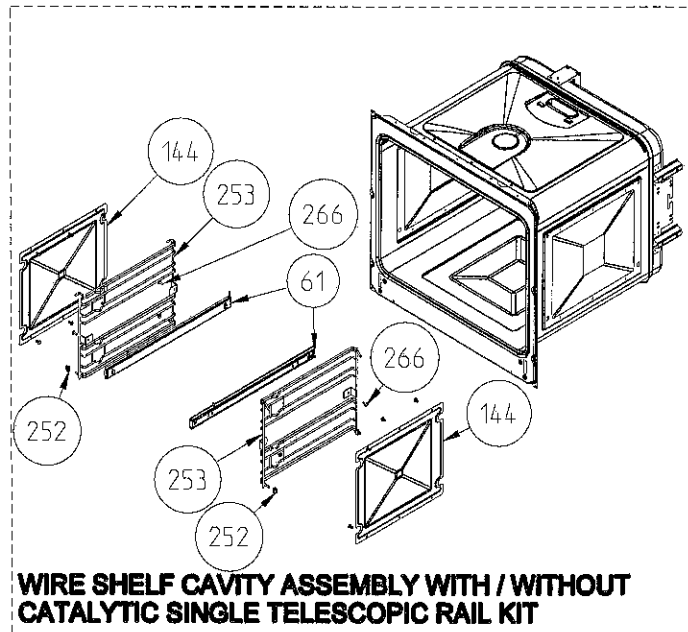
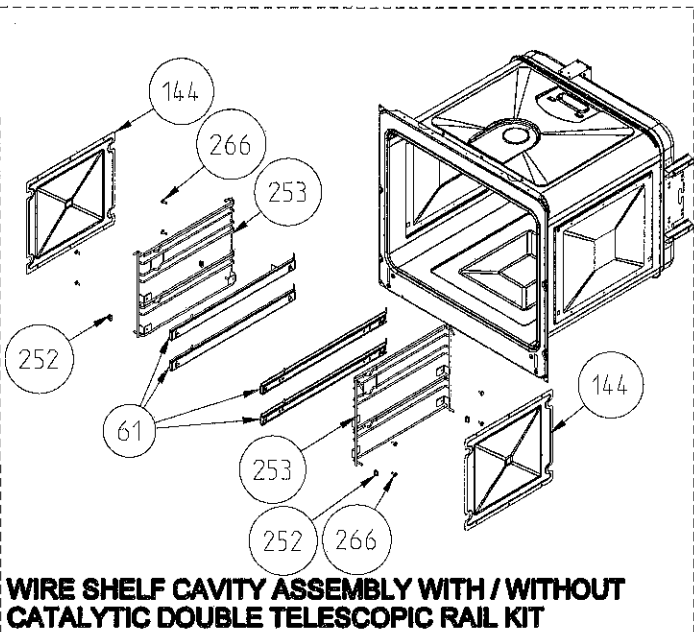
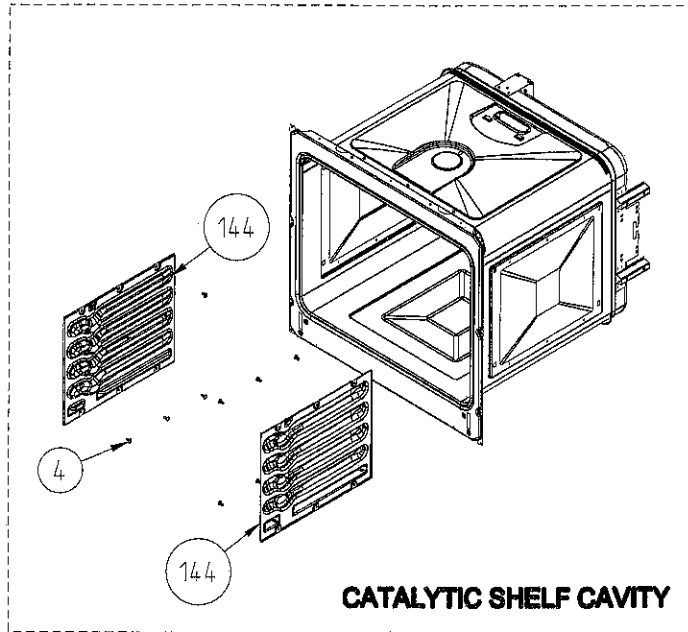
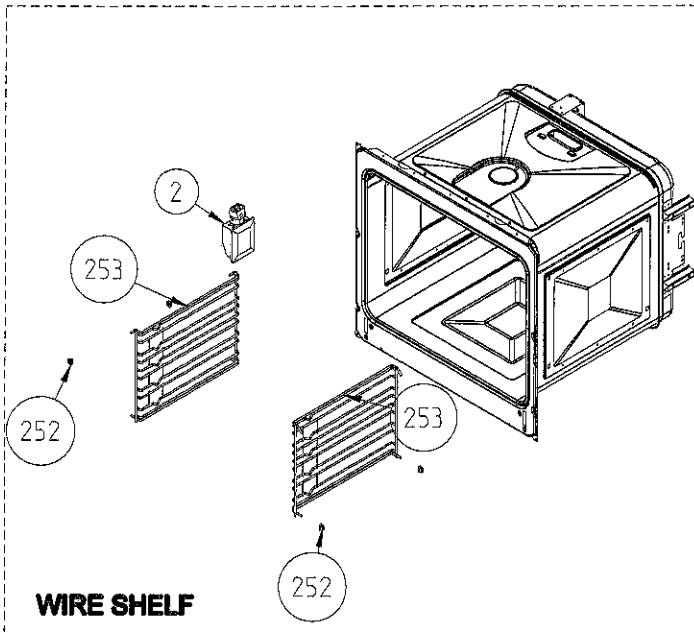
The exploded views given in this document are generic. They include all possible versions of the product. For specific part codes, please refer to the bom list of regarding model.

# 90 CM FREE STANDING BOTTLE COMPARTMENT COOKER CAVITY ASSEMBLY



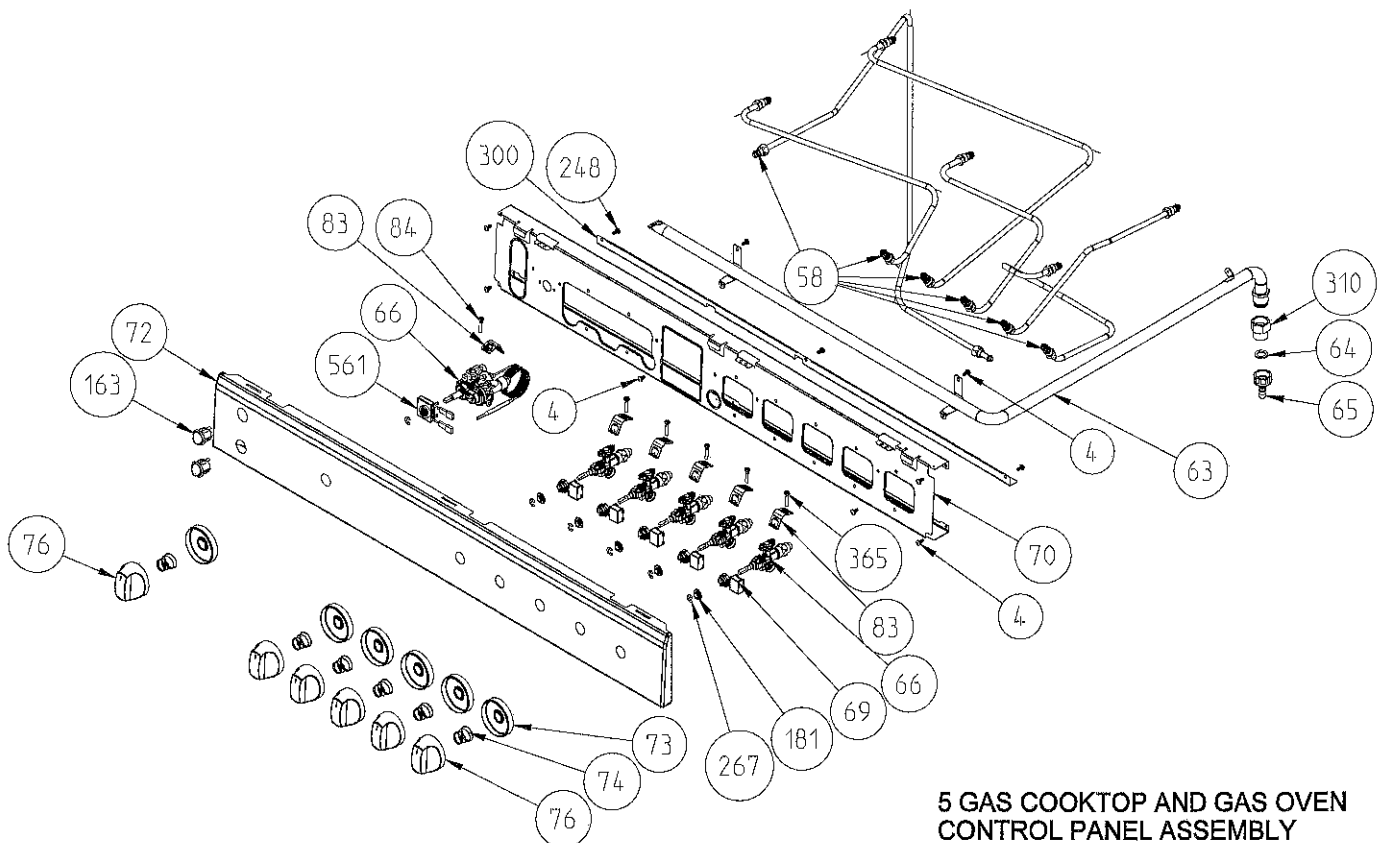
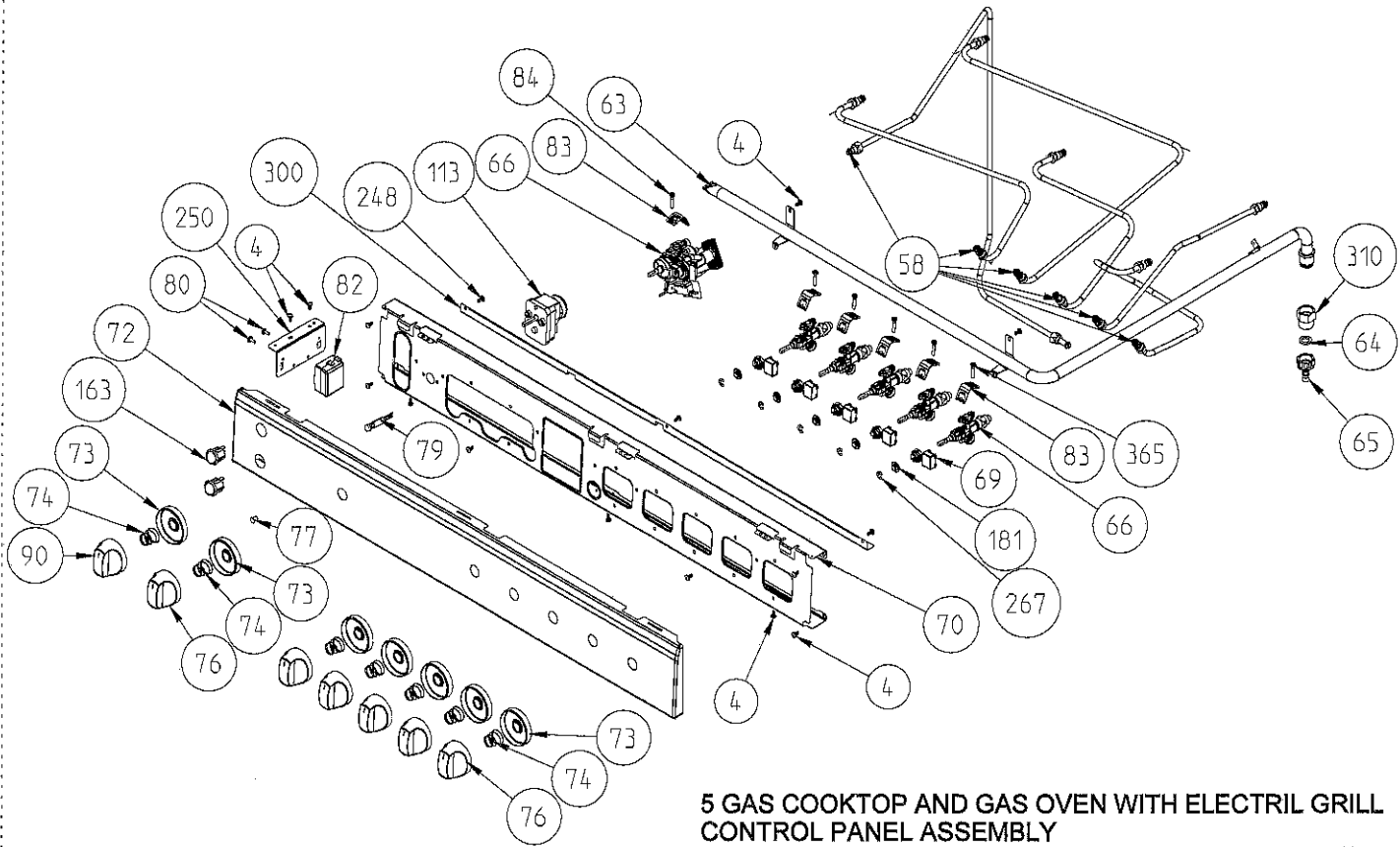
**GAS OVEN AND ELECTRIC GRILL CAVITY ASSEMBLY**

# 90 CM FREE STANDING BOTTLE COMPARTMENT GAS COOKER CAVITY ASSEMBLY



The exploded views given in this document are generic. They include all possible versions of the product. For specific part codes, please refer to the bom list of regarding model.

# 90 CM FREE STANDING COOKER BOTTLE COMPARTMENT CONTROL PANEL ASSEMBLY



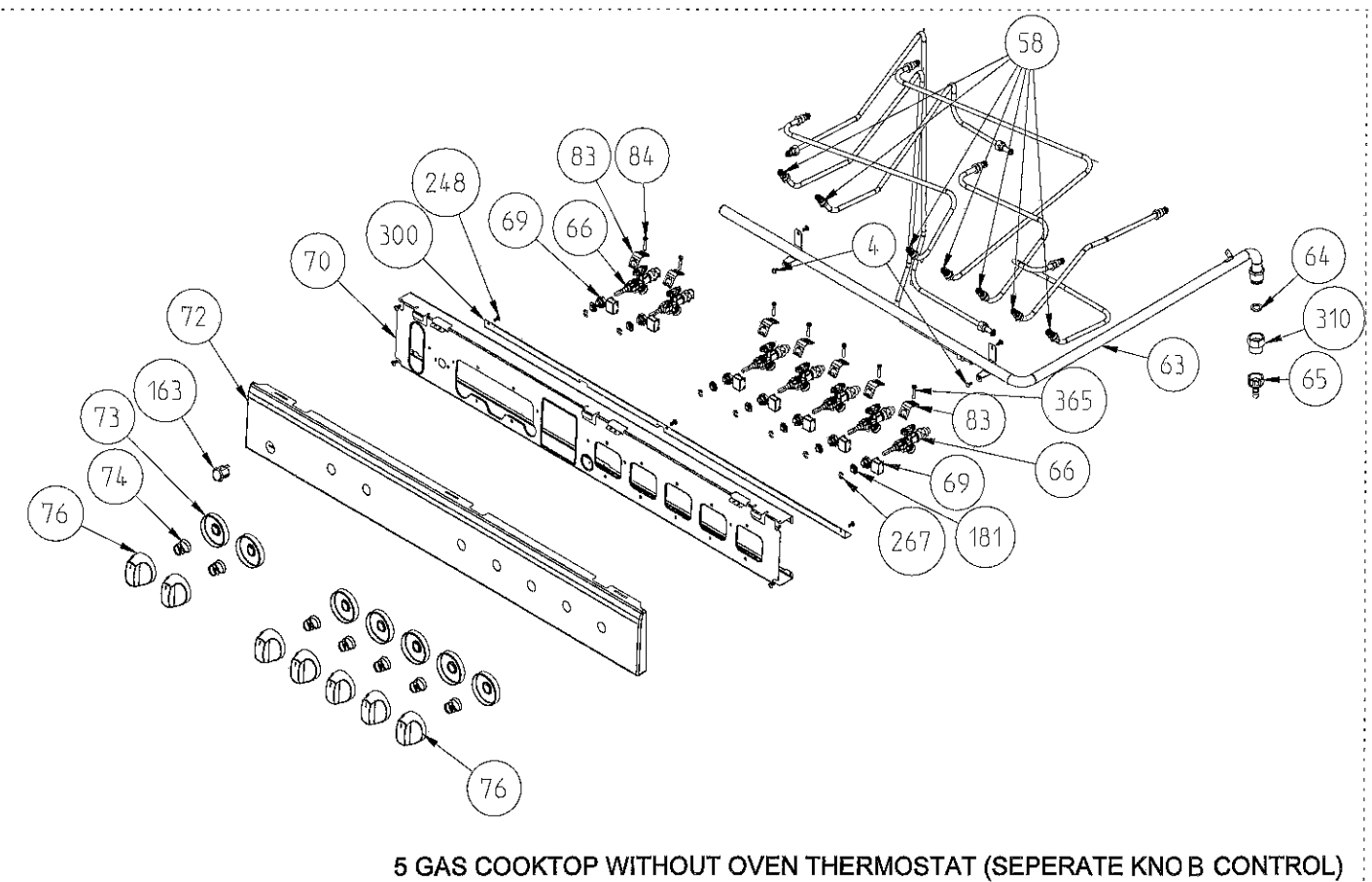
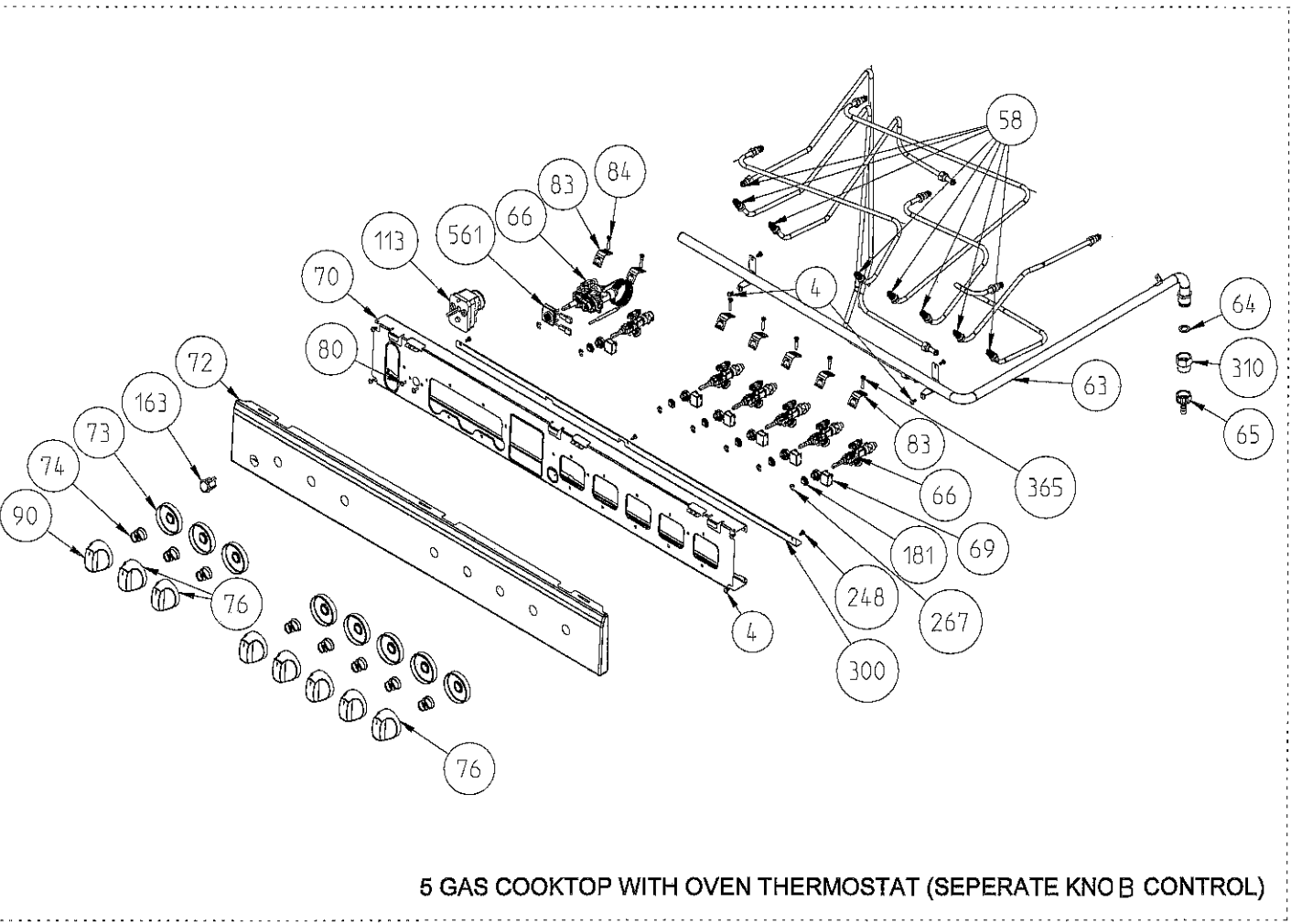
"The exploded views given in this document are generic. They include all possible versions of the product. For specific part codes, please refer to the bom list of regarding model."

5 GAS COOKTOP AND GAS OVEN WITH GAS GRILL CONTROL PANEL ASSEMBLY

Diagram illustrating the components of the Mechanic Timer (Optional). The components are labeled with circled numbers:

- 70: Main timer housing.
- 72: Mounting bracket.
- 73: Mounting screw.
- 74: Mounting nut.
- 80: Mounting plate.
- 90: Mounting pin.
- 113: Mounting pin.

17.SEPTEMBER.2013

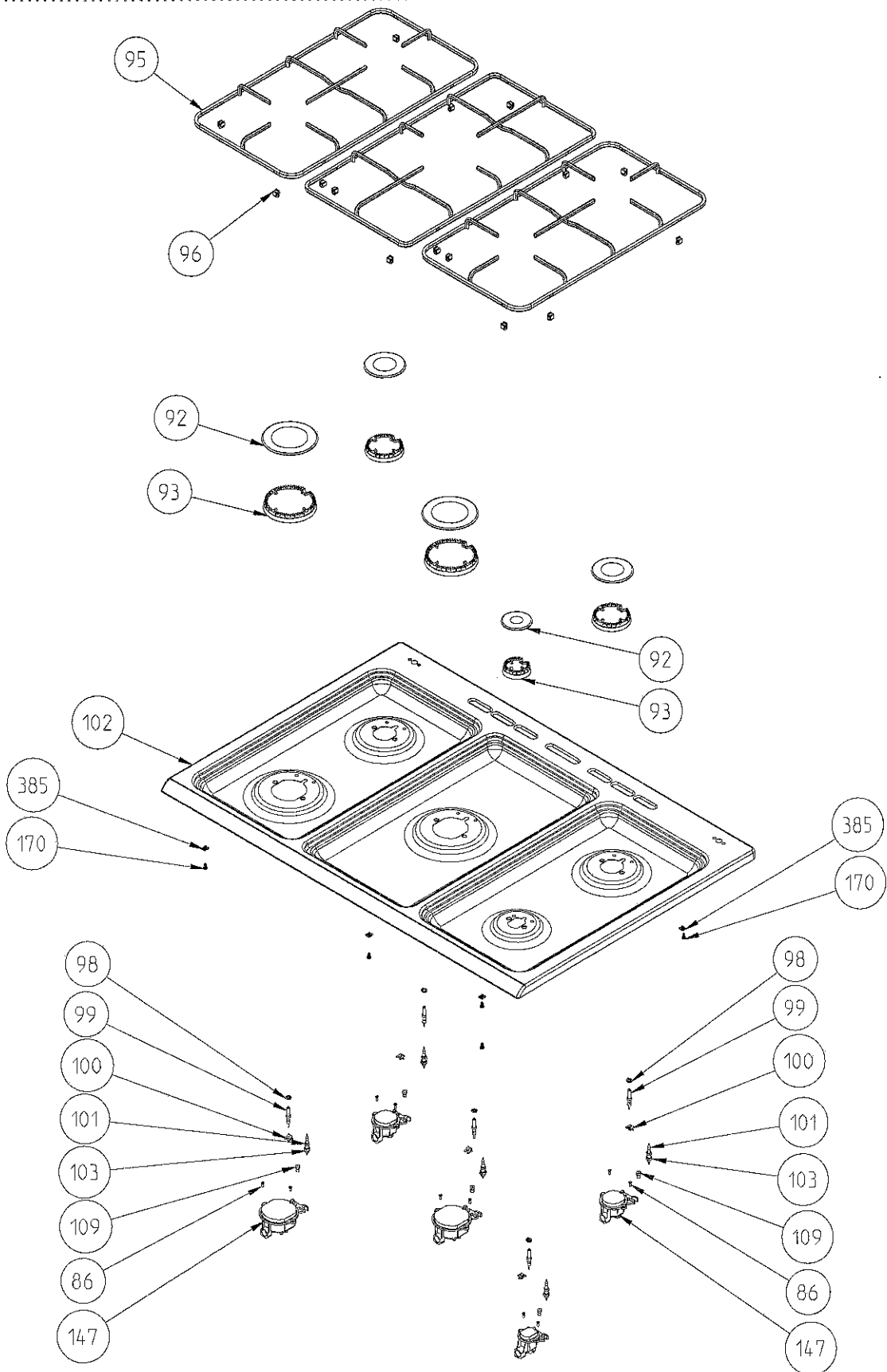


5 GAS COOKTOP WITH OVEN THERMOSTAT (SEPERATE KNO B CONTROL ,DIGITAL TIMER)

5 GAS COOKTOP WITH OVEN THERMOSTAT (SEPERATE KNO B CONTROL ,DIGITAL TIMER)

**"The exploded views given in this document are generic.They include all possible versions of the product. For specific part codes,please refer to the born list of regarding model."**

# 90 CM FREE STANDING GAS COOKER COOKTOP ASSEMBLY

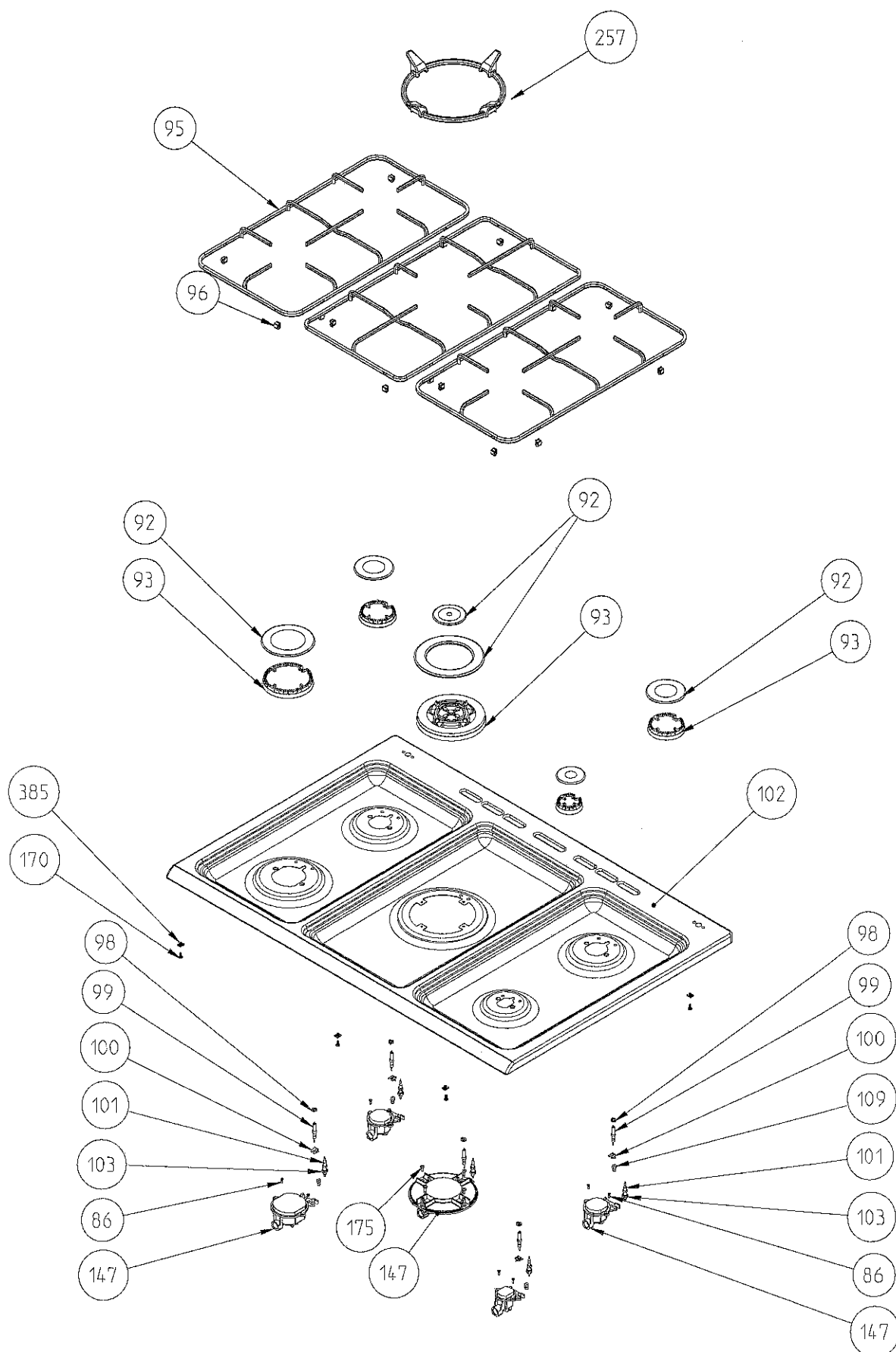


**5 GAS  
COOKTOP ASSEMBLY**

"The exploded views given in this document are generic. They include all possible versions of the product. For specific part codes, please refer to the bom list of regarding model."

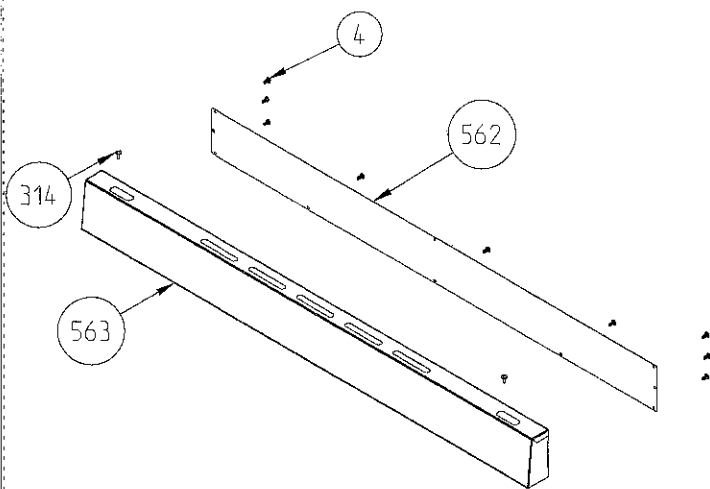
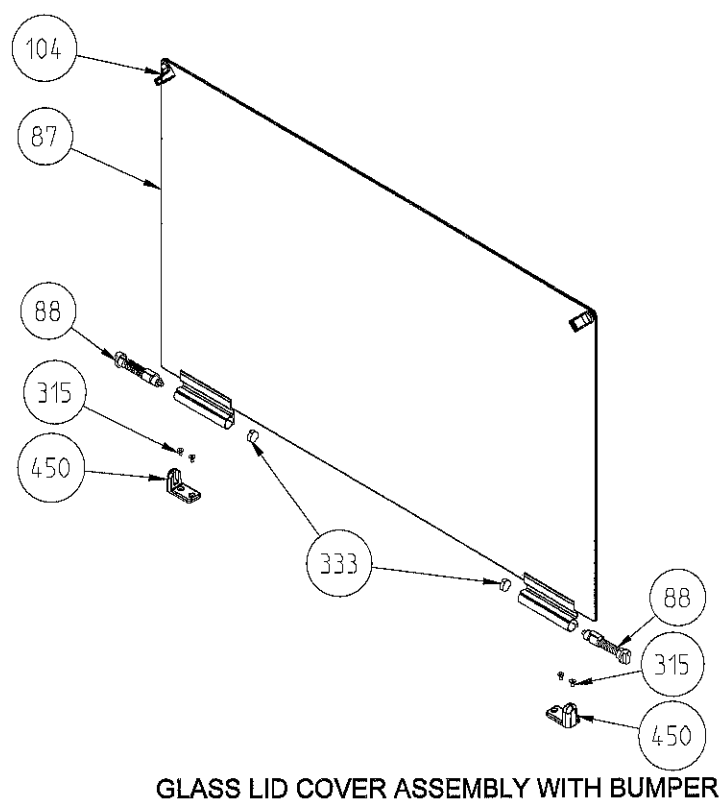
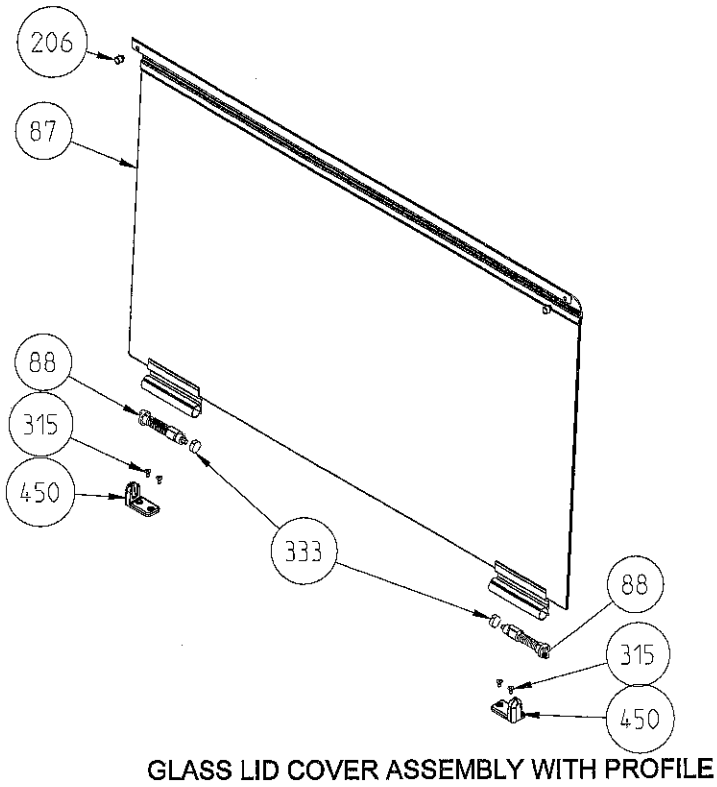


# 90 CM FREE STANDING GAS COOKER COOKTOP ASSEMBLY



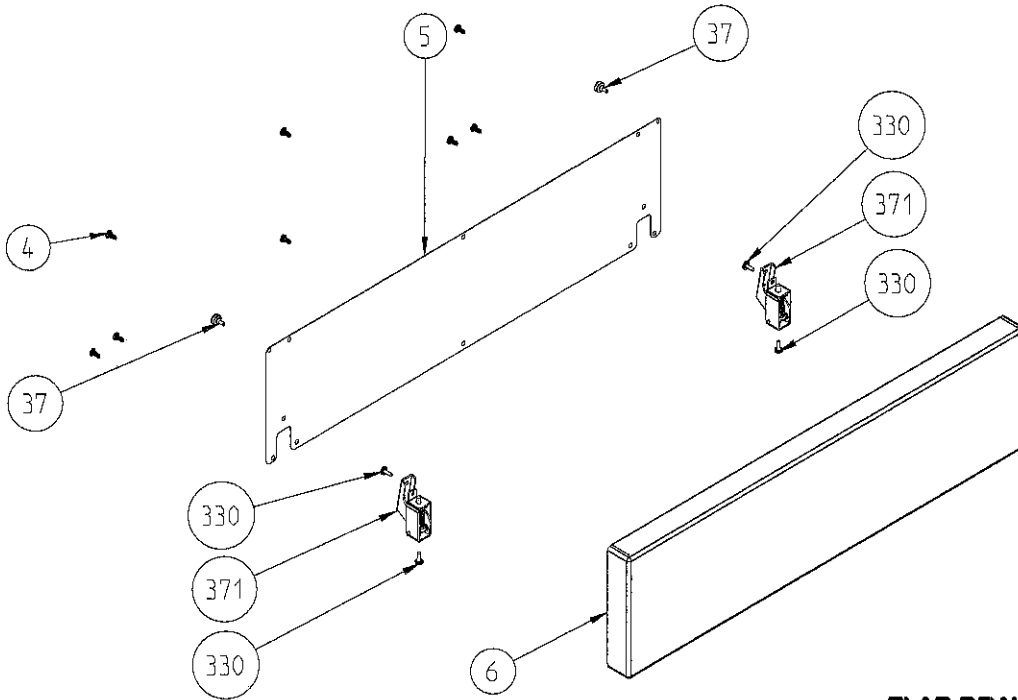
"The exploded views given in this document are generic. They include all possible versions of the product. For specific part codes, please refer to the born list of regarding model."

# 90 CM FREE STANDING GAS COOKER LID ASSEMBLY

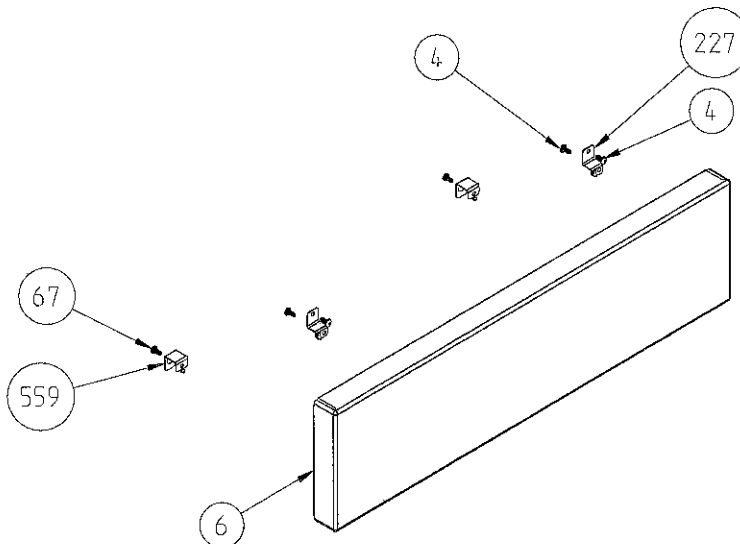


"The exploded views given in this document are generic. They include all possible versions of the product. For specific part codes, please refer to the bom list of regarding model."

# 90 CM FREE STANDING COOKER BOTTLE COMPARTMENT DRAWER ASSEMBLY



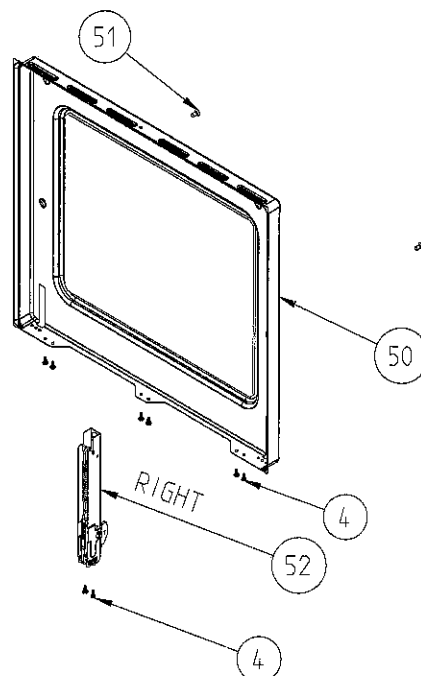
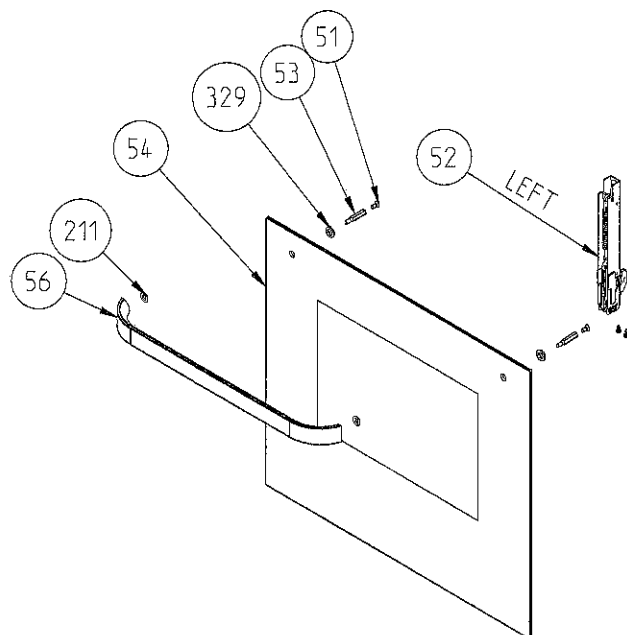
**FLAP DRAWER ASSEMBLY**



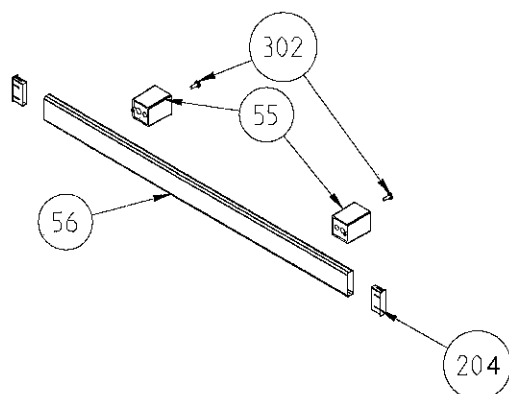
**FIXED DRAWER ASSEMBLY**

**"The exploded views given in this document are generic. They include all possible versions of the product. For specific part codes, please refer to the born list of regarding model."**

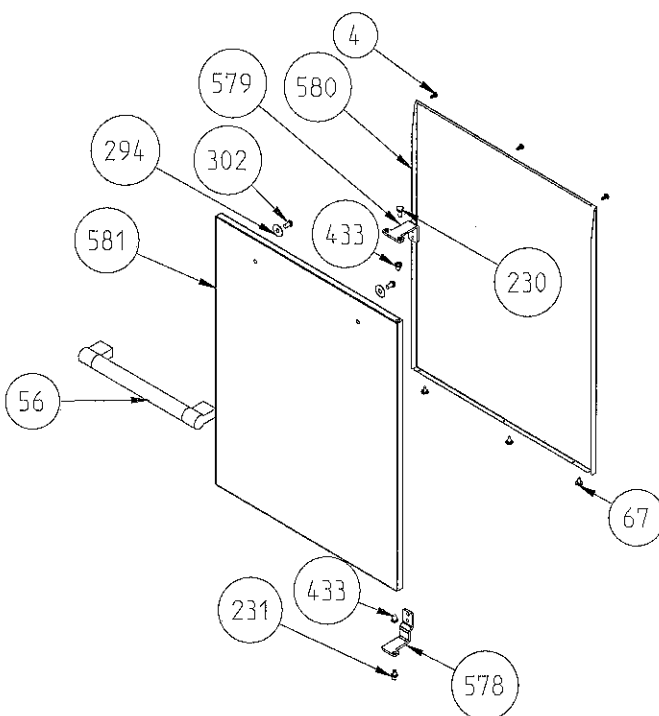
# 90 CM FREE STANDING BOTTLE COMPARTMENT COOKER OVEN DOOR ASSEMBLY



POSITION NUMBER 376  
FLAT TYPE OVEN DOOR WITH 2 GLASSES  
(SMALL INNER GLASS)



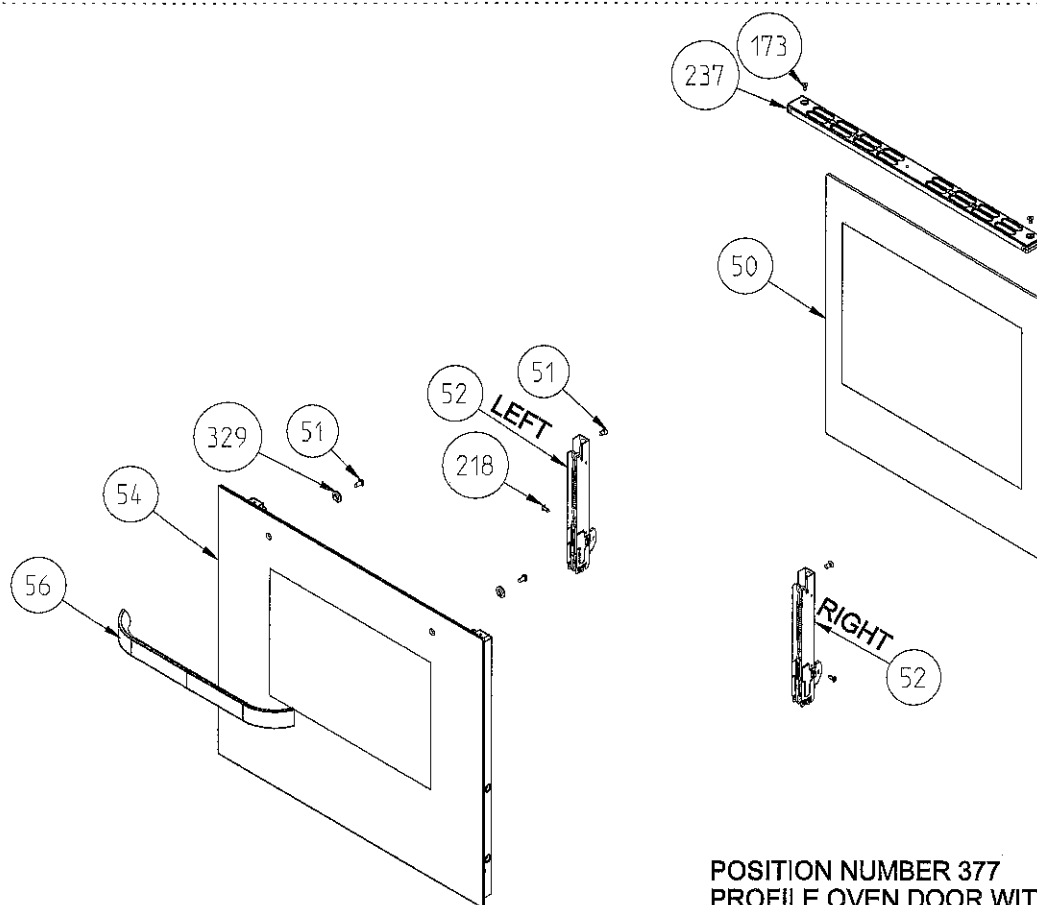
**HANDLE WITH BRACKET**



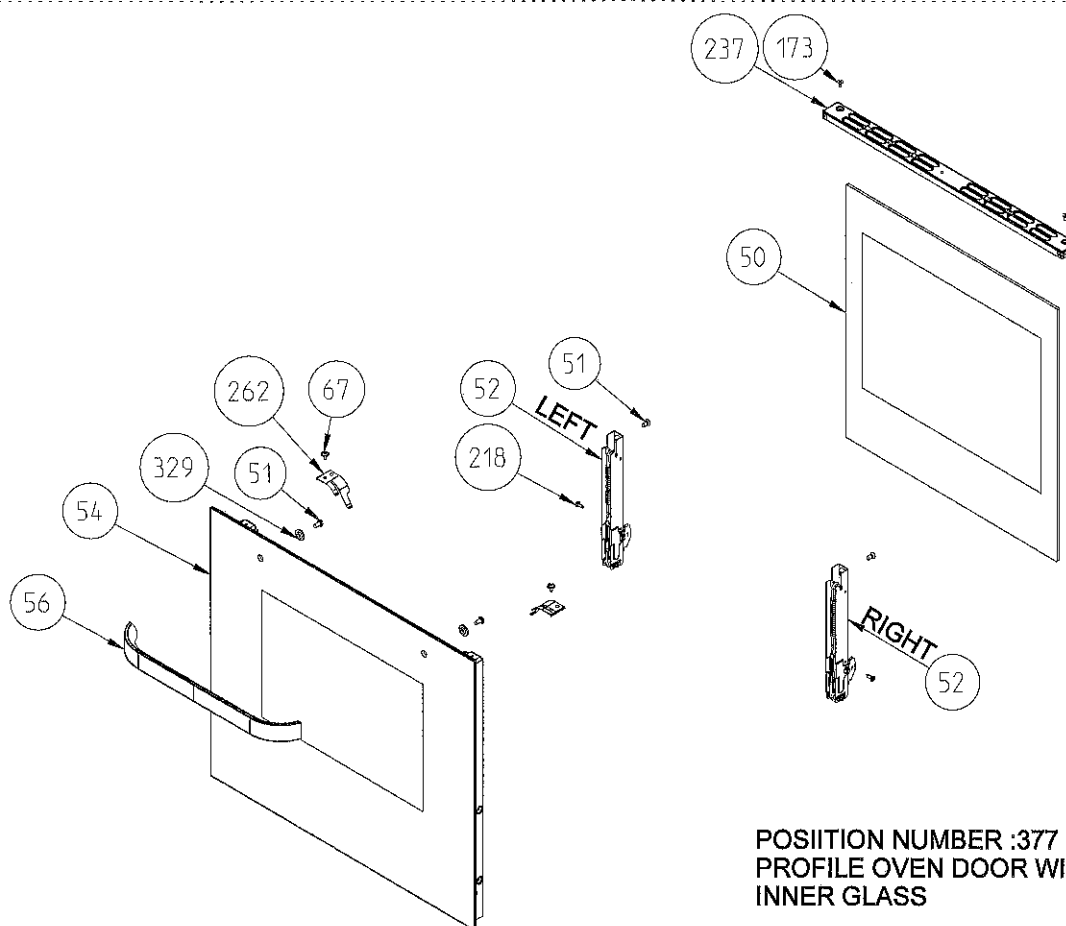
**BOTTLE COMPARTMENT DOOR**

"The exploded views given in this document are generic. They include all possible versions of the product. For specific part codes, please refer to the bom list of regarding model."

# 96 FREE STANDING BOTTLE COMPARTMENT COOKER PROFILE OVEN DOOR ASSEMBLY

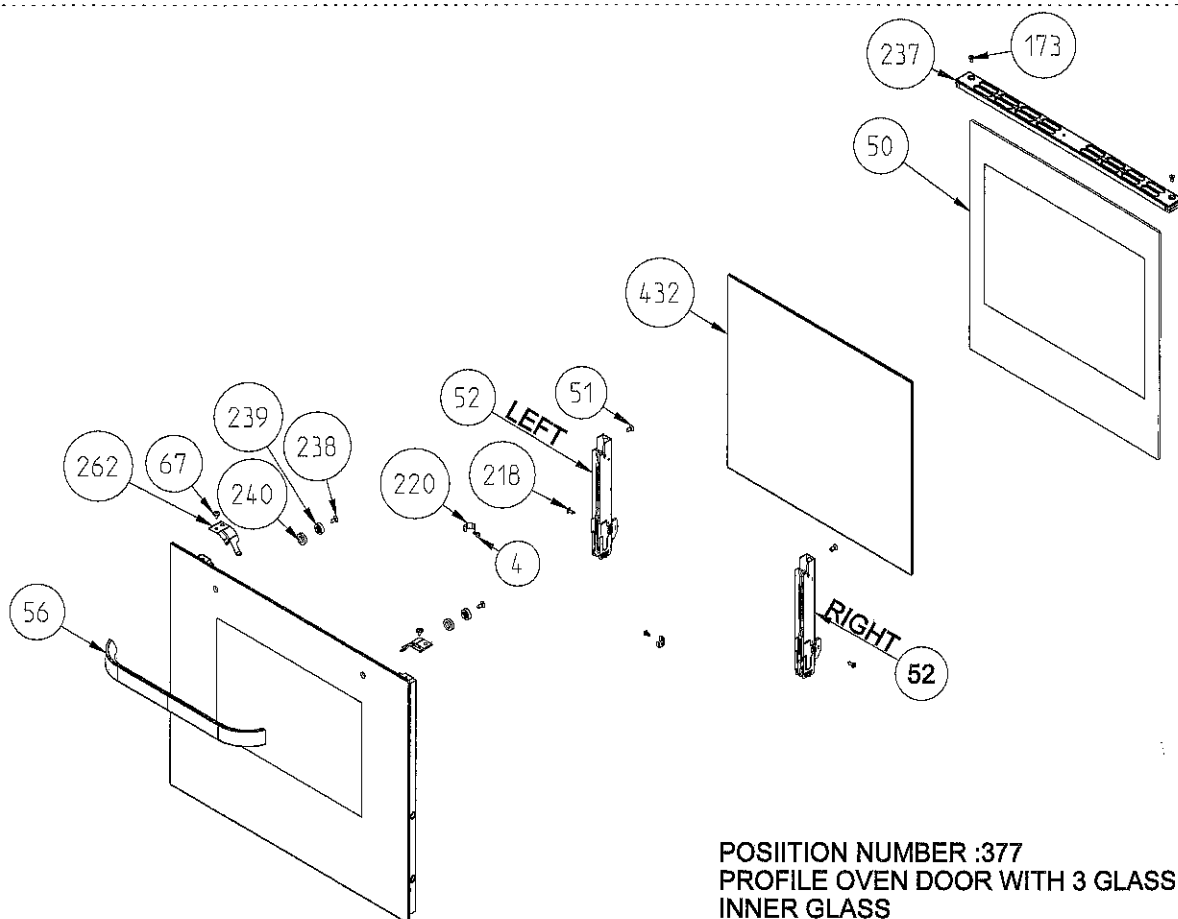


POSITION NUMBER 377  
PROFILE OVEN DOOR WITH 2 FIXED GLASS



POSITION NUMBER :377  
PROFILE OVEN DOOR WITH 2 GLASSES BIG  
INNER GLASS

# 96 FREE STANDING BOTTLE COMPARTMENT COOKER PROFILE OVEN DOOR ASSEMBLY

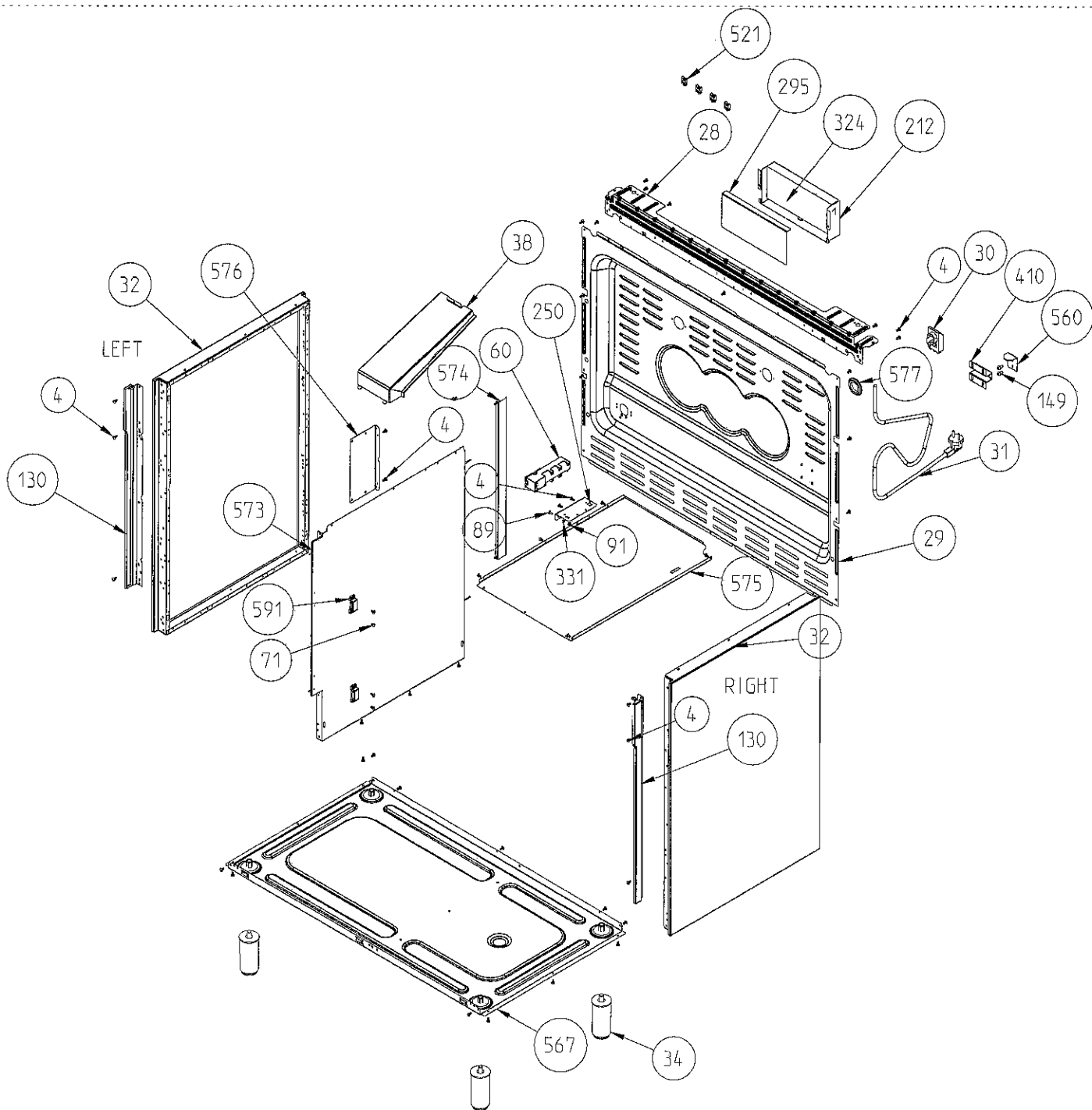


POSITION NUMBER :377  
PROFILE OVEN DOOR WITH 3 GLASSES BIG  
INNER GLASS

"The exploded views given in this document are generic.They include all possible versions of the product.  
For specific part codes,please refer to the bom list of regarding model."

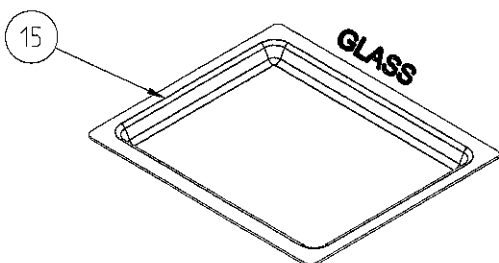
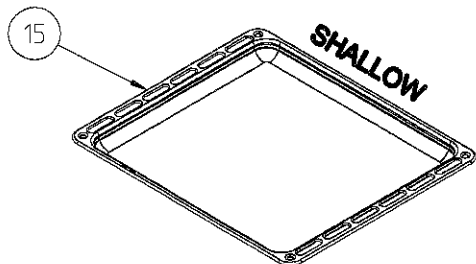
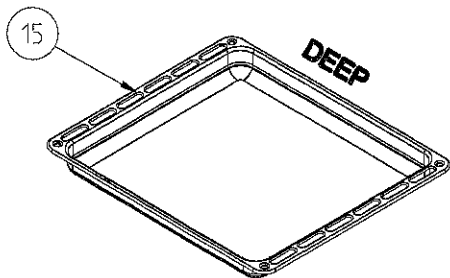
17 September 2013

# 90 CM FREE STANDING BOTTLE COMPARTMENT GAS COOKER SIDE PANEL ASSEMBLY

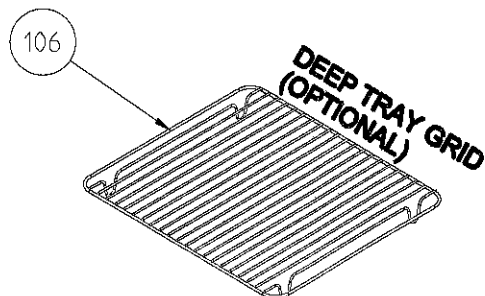
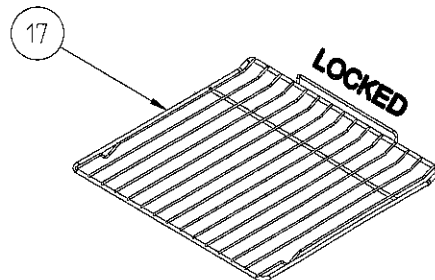
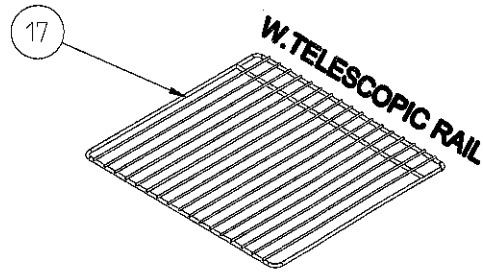


**GAS OVEN SIDE PANEL ASSEMBLY  
WITH BOTTLE COMPARTMENT**

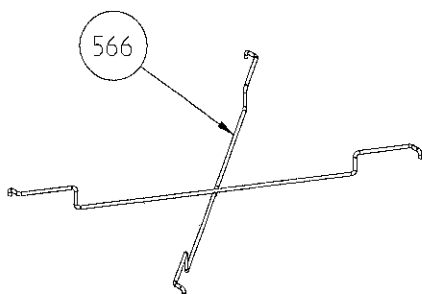
"The exploded views given in this document are generic.They include all possible versions of the product.  
For specific part codes,please refer to the bom list of regarding model."



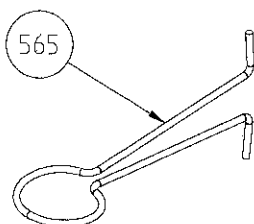
**TRAYS (OPTIONAL)**



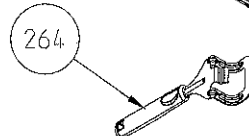
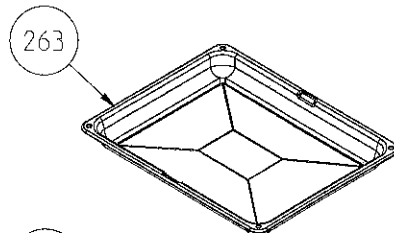
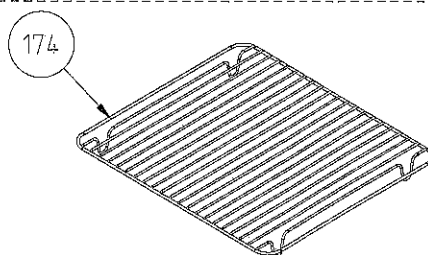
**GRID (OPTIONAL)**



**TUBE HOLDER WIRE**



**HOSE HOLDER WIRE**



**GRILL PAN AND HANDLE SET  
(TRAY SET FOR GRILL)  
POSITION NO 265 (OPTIONAL)**