

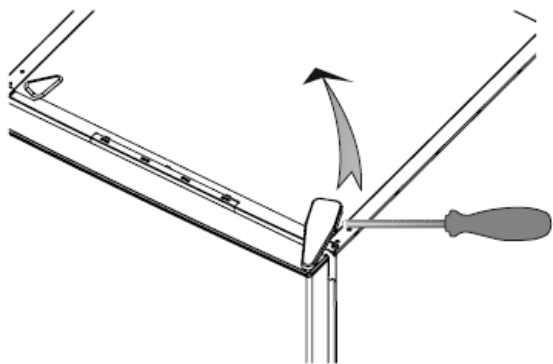


STATIC COMBI 252-266-278

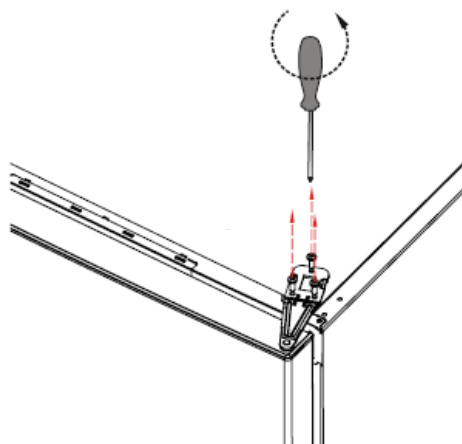
Reversing the door



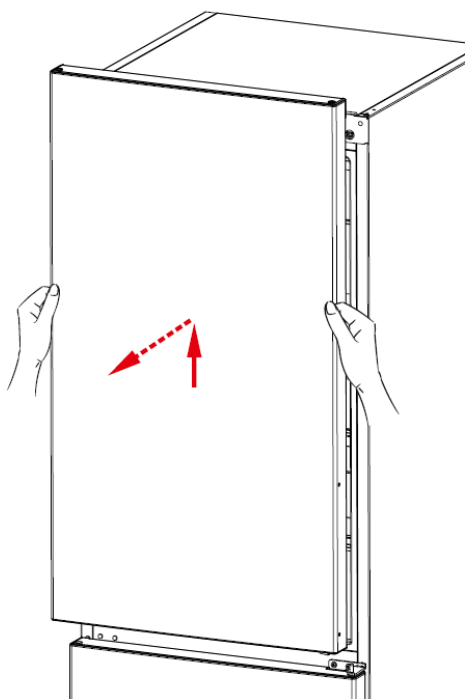
Hold the top hinge cover and remove it toward that direction.



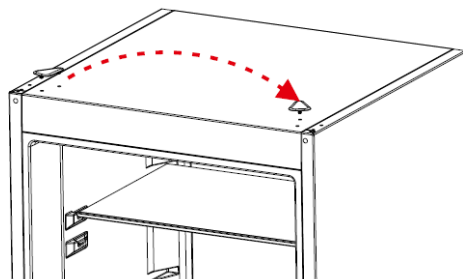
Unscrew the screws fixing the top hinge and remove it.



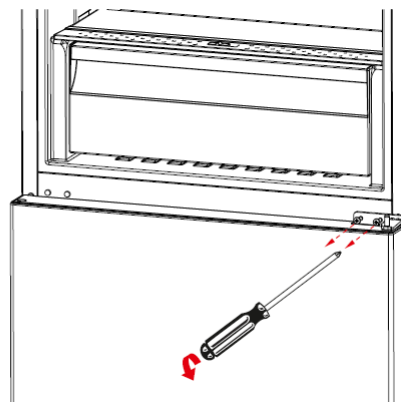
Displace the top door.



Remove the hinge cover cap and assembly right side.



Unscrew the two screws fixing the middle hinge and remove it.



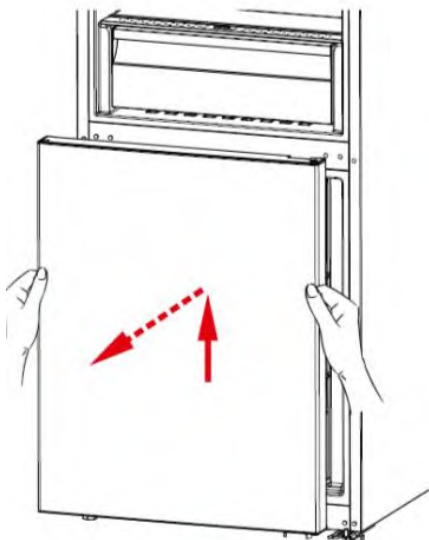


STATIC COMBI 252-266-278

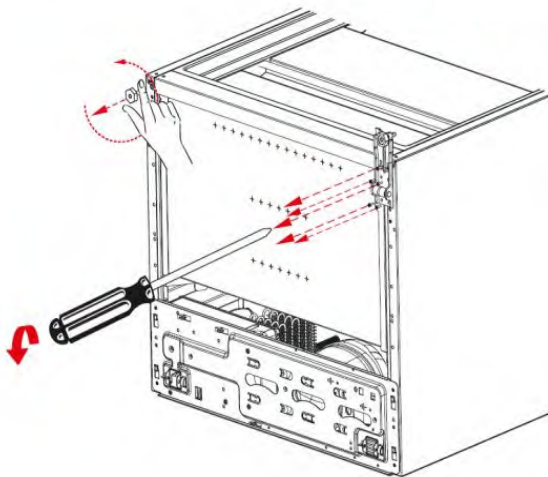
Reversing the door



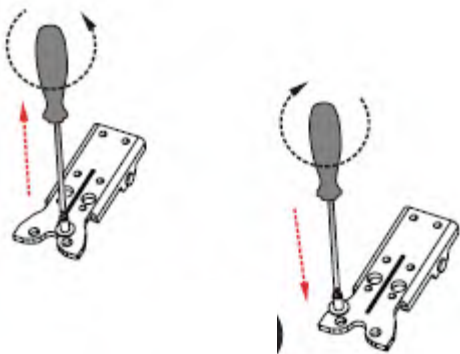
Displace the bottom door.



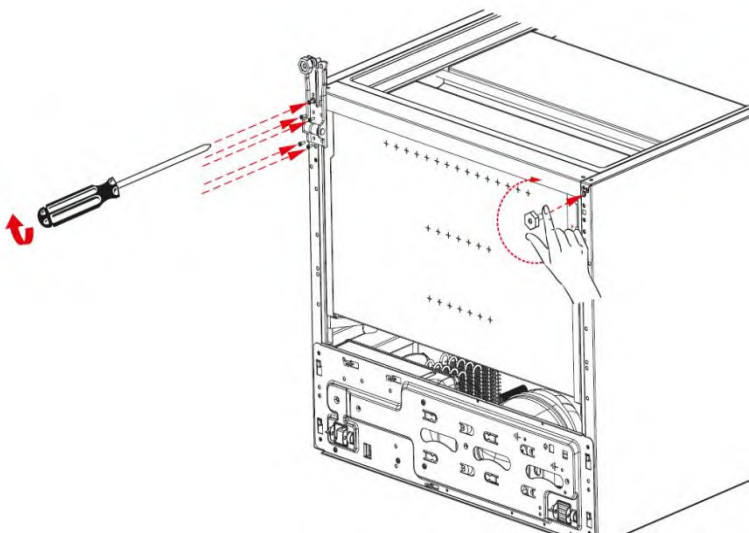
Unscrew the bottom hinge screws.
Unscrew the adjustable foot.



Unscrew the bottom hinge pin and
screw it to other hole.



Screw the bottom hinge to the left bottom
side of refrigerator. Screw the adjustable
foot there.





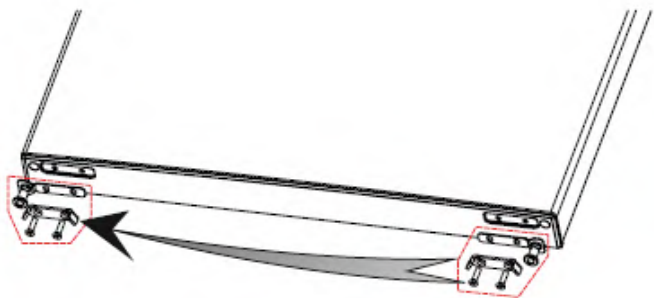
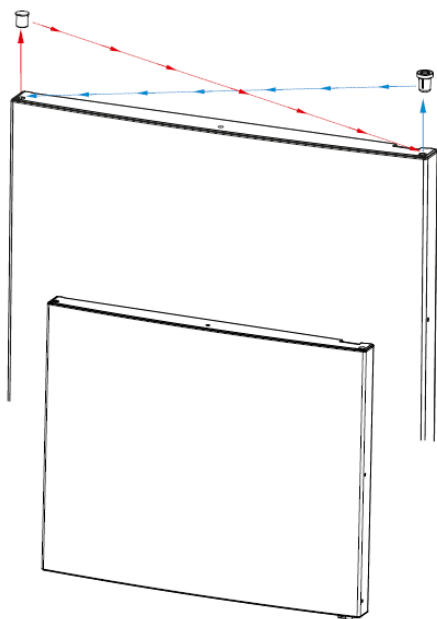
STATIC COMBI 252-266-278

Reversing the door

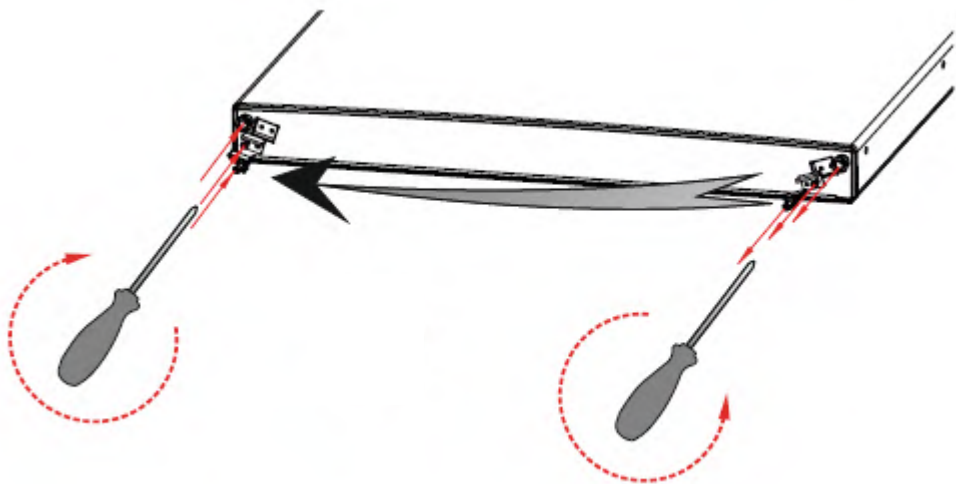


Replace the top bushing and the top bushing cap at the bottom door.

Unscrew the two screws fixing stopper and stopper support plate under the bottom door. After that screw the other side.



Remove the support plastic and then metal stopper placed under the upper door. Then re screw these parts to the other side symmetrically.
(remember the screw for the metal part must be screwed to the hole which is closer to the bushing). Do not use cordless screwdriver for these screws.





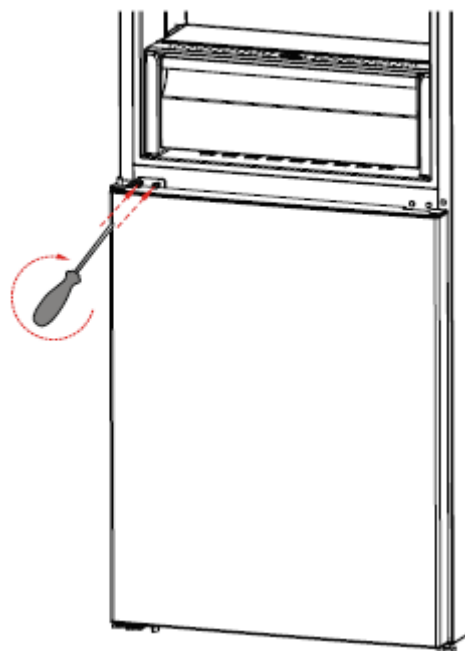
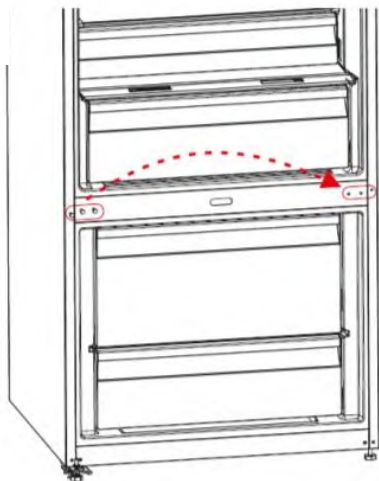
STATIC COMBI 252-266-278

Reversing the door

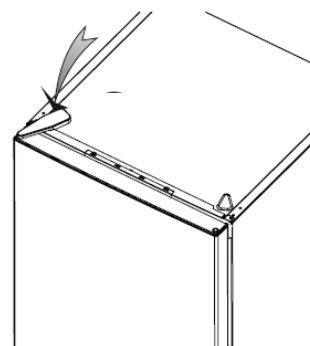
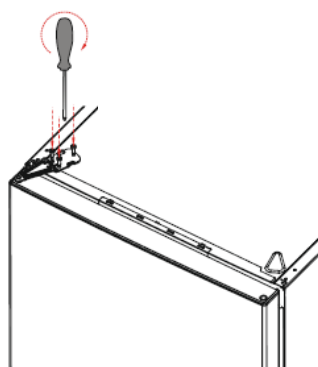
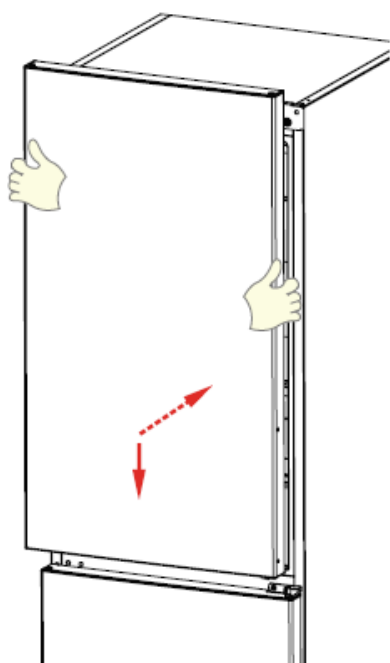




Remove the middle hinge cover and then screw the screw on the side panel and assemble to the right side panel

Place the bottom door and rotate the middle hinge by 180°. After that, screw to the right side on the middle sheet.



Place the top door to the middle hinge and then connect the display connector and screw the top hinge to the top panel. Place the top hinge cover.



	STATIC COMBI 252-266-278	
	INSTRUCTIONS	

Thermostat Setting

The thermostat automatically regulates the temperature inside the cooler and freezer compartments.

Refrigerator temperatures can be obtained by rotating the knob to higher numbers; 1 to 3, 1 to 5

Thermostat settings:

1 – 2 : For short-term storage of food

3 – 4 : For long-term storage of food

5 : Maximum cooling position. The appliance will work longer. If required, change the temperature setting.





Replacement of LED

Screwdriver into the gap and remove the led cover.

Remove screw led

Disconnect the connector and change the led.

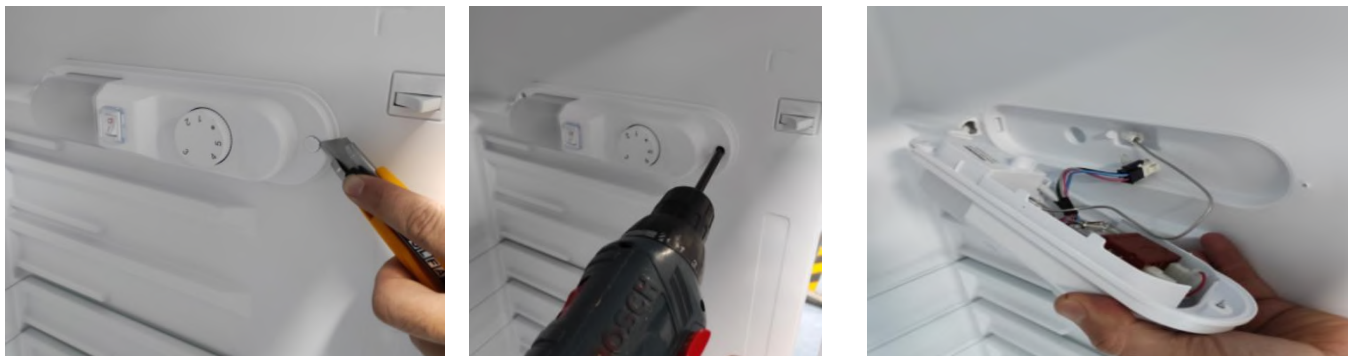


	STATIC COMBI 252-266-278		
	INSTRUCTIONS		

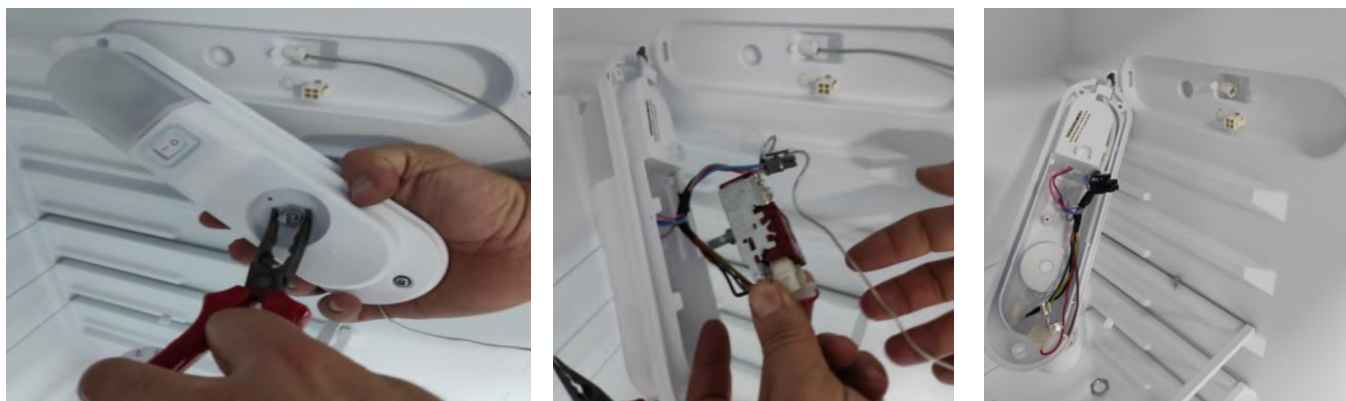
Replacement of Thermostat

CAUTION: The plug must be pulled out before the mainboard group is removed.

Remove screw which is attached one side of the thermostat



Firstly take off the button and screw and then take off all cable connection and pull thermostat bulb out



Take off the lamp cover, cable connection and screw at below picture





STATIC COMBI 252-266-278

INSTRUCTIONS



Firstly cut off the black band and change the thermostat



Place the thermostat, screws is tightened, insert the button
Connect cables as shown below



Send the thermostat bulb pipe throughout the hole until it end

Plug the black socket to the fridge

Close the lamp cover ve screw is tightened which are attached one side of the thermostat.



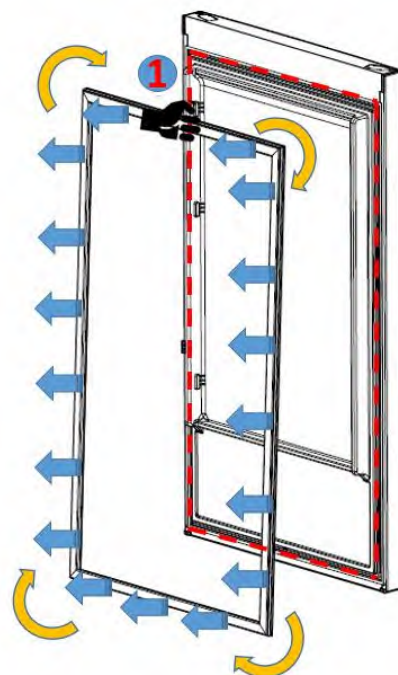
STATIC COMBI 252-266-278

INSTRUCTIONS

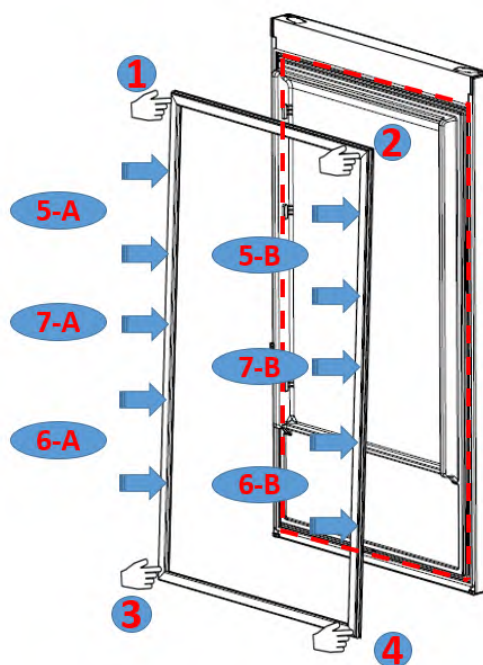


Door Gasket Change

Pull the gasket towards starting from top right corner
Slowly pull the rest of the gasket.
Completely remove the gasket from door.



Check the replacement gasket form
Starting with upper right corner, press on the gasket until it fits to its place..
Place the other sides of the gasket with the help of your thumb



After the replacement check if there any non-fitting point on the gasket. Also check if there any opening at the gasket while the door is closed. If so that might cause condensation/icing or insufficient cooling/freezing. To prevent this soften the form of the gasket with the help of a hair dryer or hot water and make sure that all points are closing perfectly.



STATIC COMBI 252-266-278

INSTRUCTIONS



Removing/Assembling The Door Switch

1. Stick a tape to protect the body plastic. Flex it with the help of a tool like a slotted screwdriver.



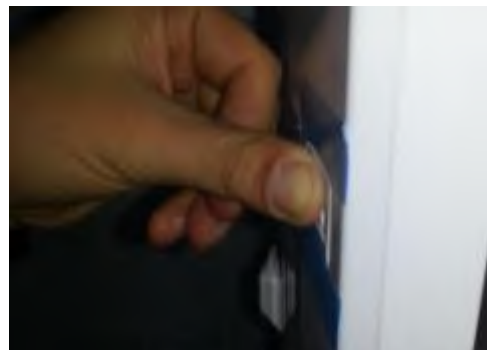
2. Also flex the top-side of the switch and then displace by pulling.




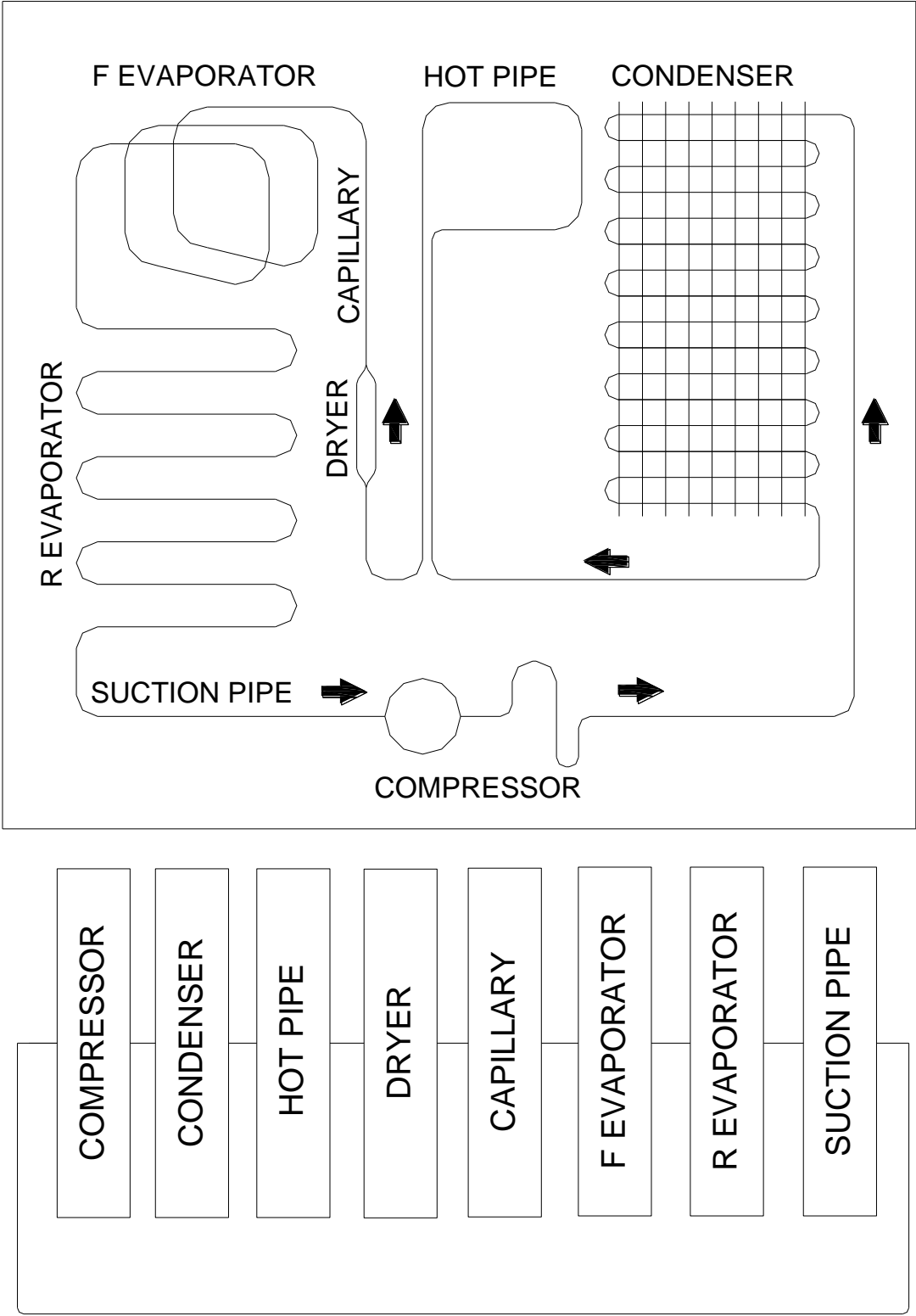
3. Put the switch connector cable in the housing. First place the top-side of the switch and then push the bottom side.



4. After the switch is placed, complete the assembly by pushing.



	STATIC COMBI 252-266-278	
	REFRIGERANT CYCLE DIAGRAM	



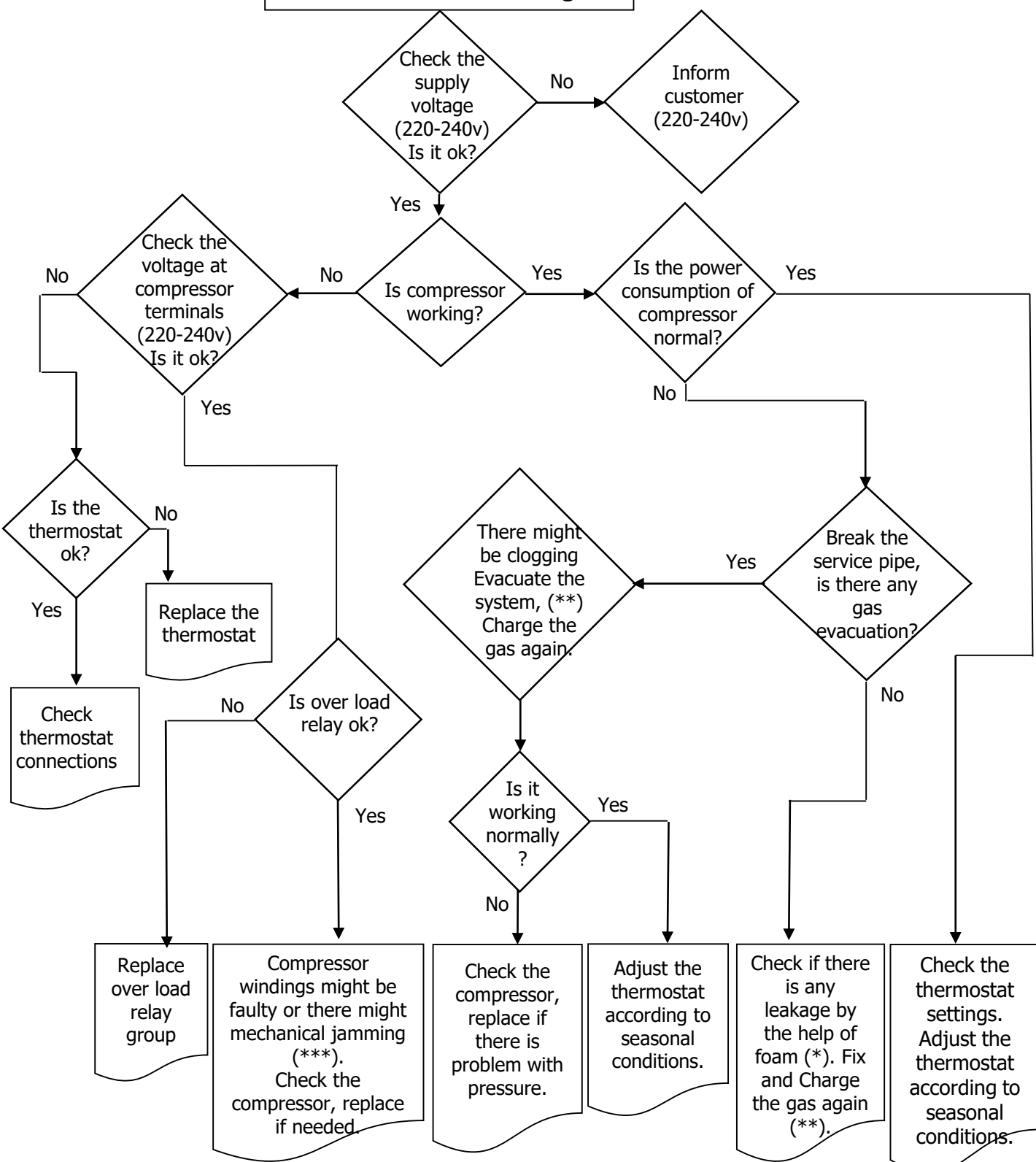


STATIC COMBI 252-266-278

TROUBLE-SHOOTING CHART



No/Insufficient cooling



(*) Check all pipes, tubes and welding points against gas leakage. (**) Before charging gas to system, change dryer and vacuum at least 30 minutes, then charge the system with amount written on label (***) Compressor primary winding should be around 10 Ω and secondary around 15 Ω (at 25°C ambience temp.)

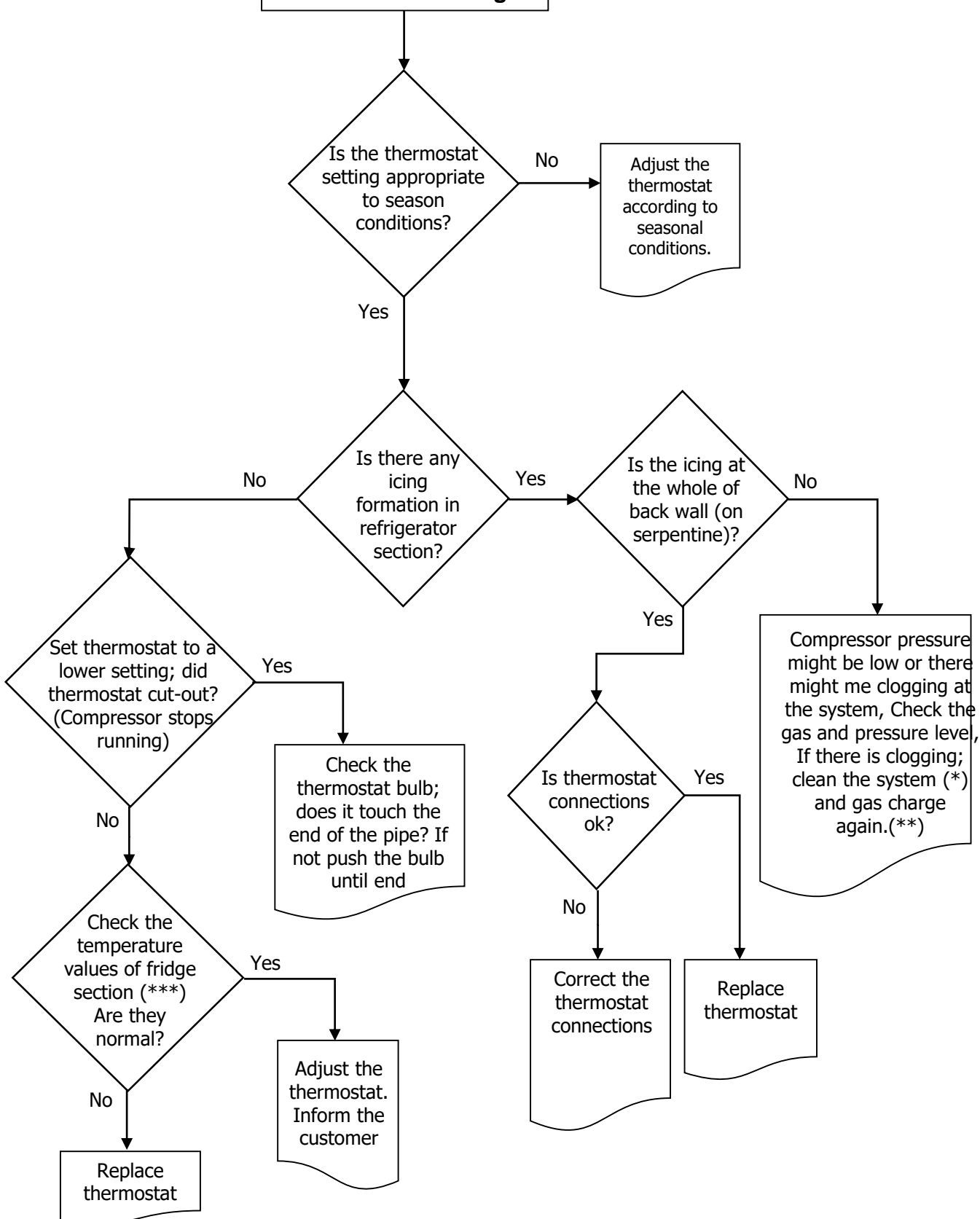


STATIC COMBI 252-266-278

TROUBLE-SHOOTING CHART



Excessive Cooling



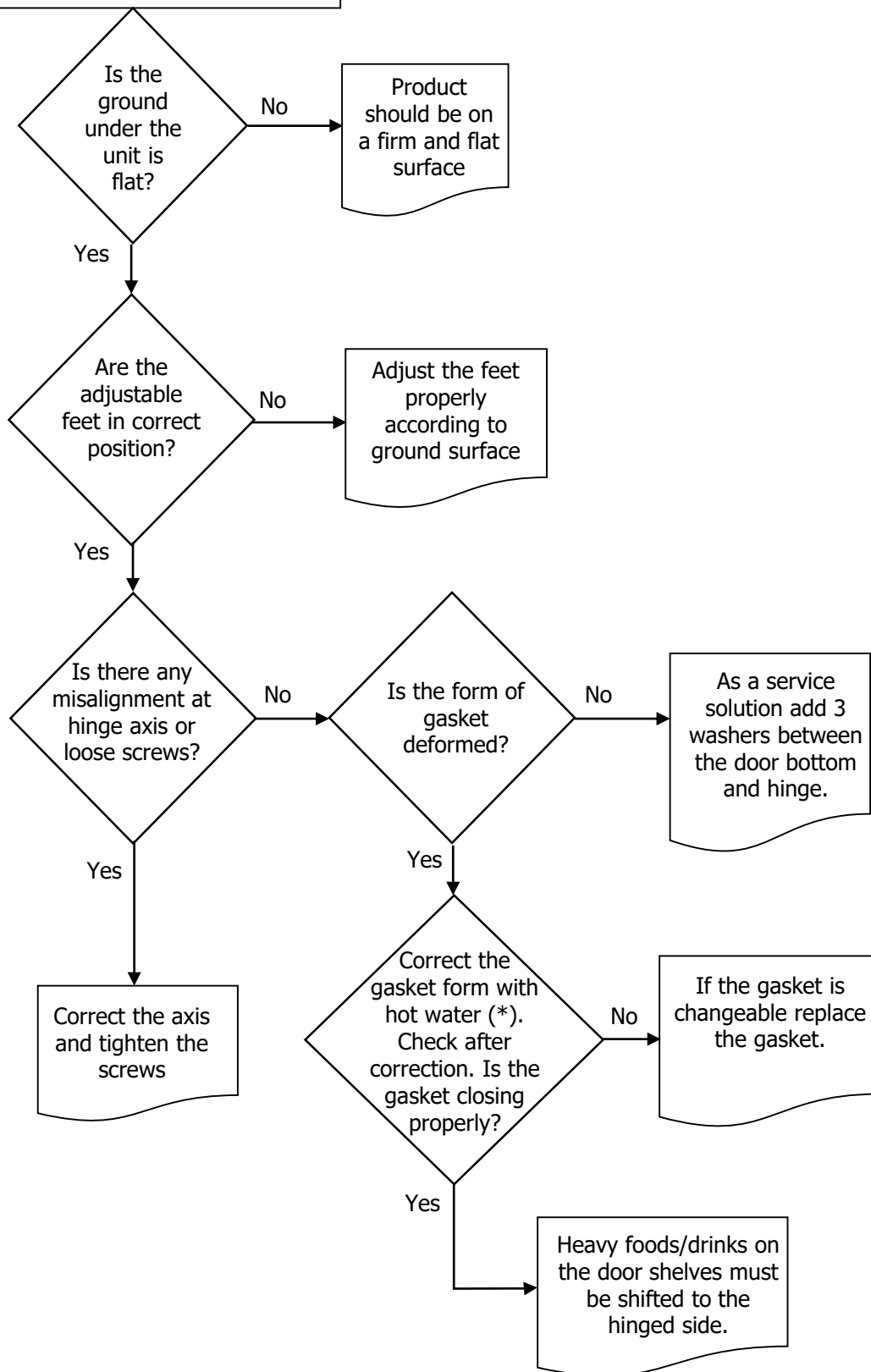


STATIC COMBI 252-266-278



TROUBLE-SHOOTING CHART

Door/Gasket Adjustment

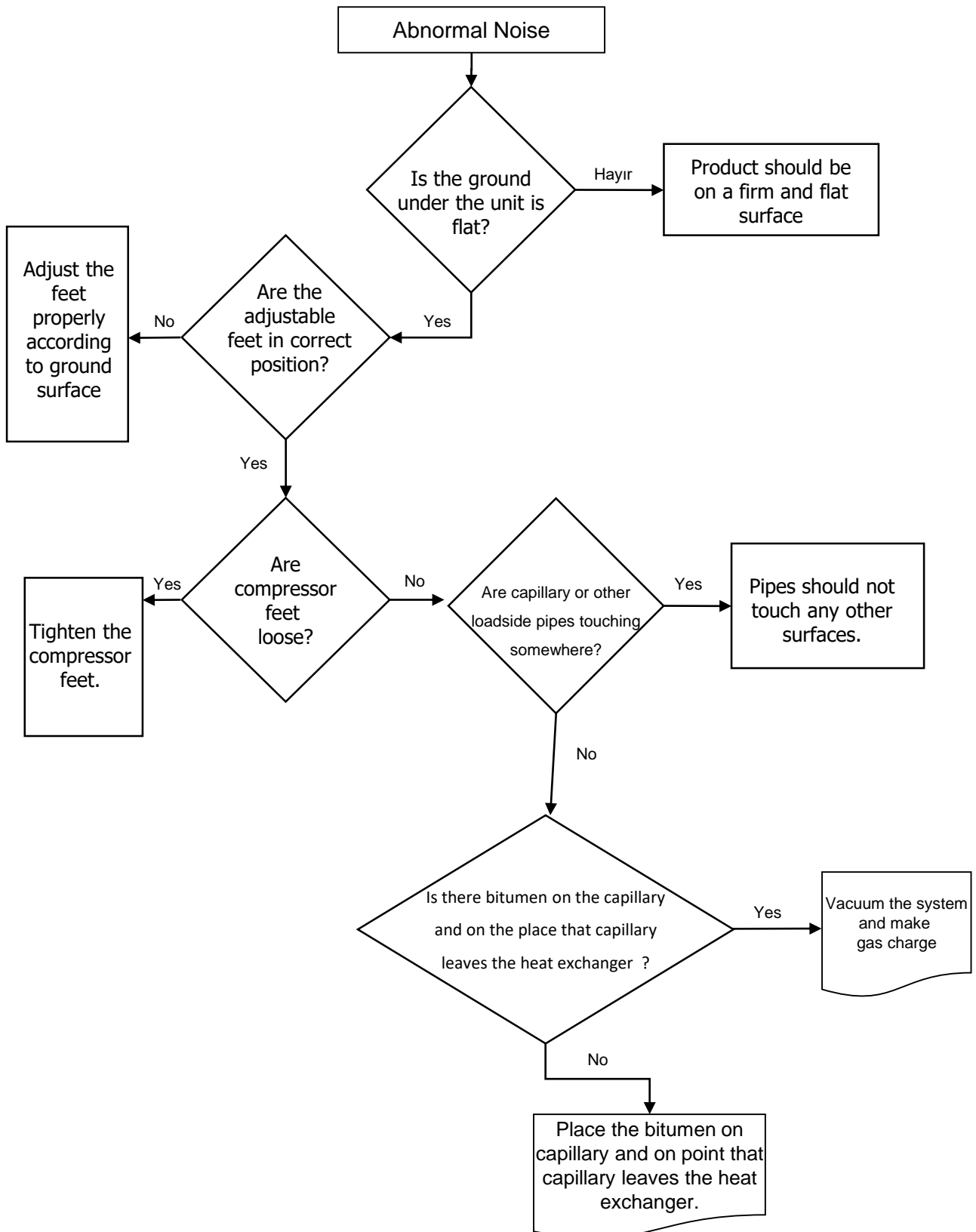




(*) Correct the gasket form by the help of hot water and hair dryer.



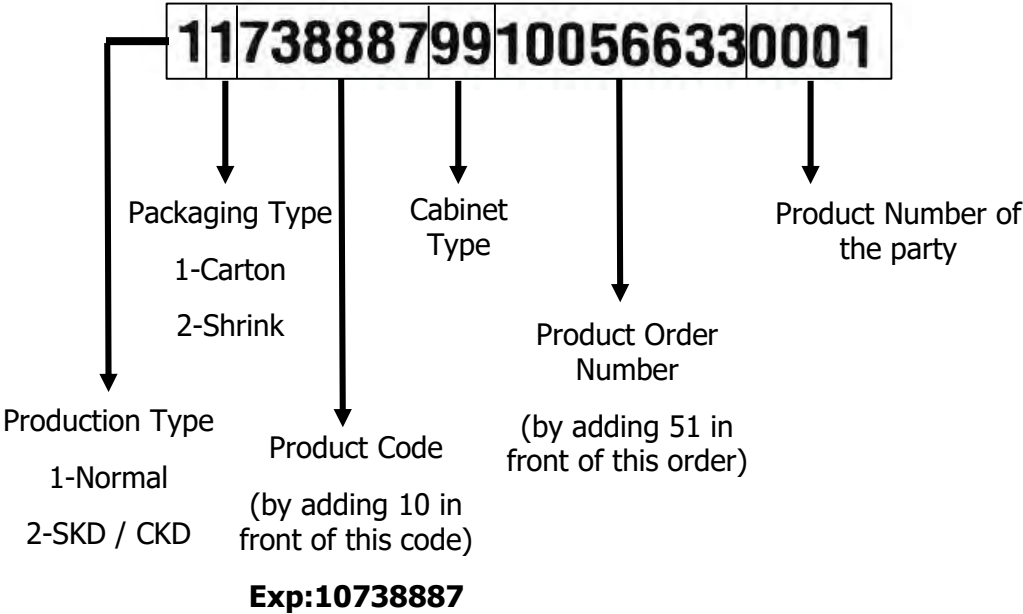
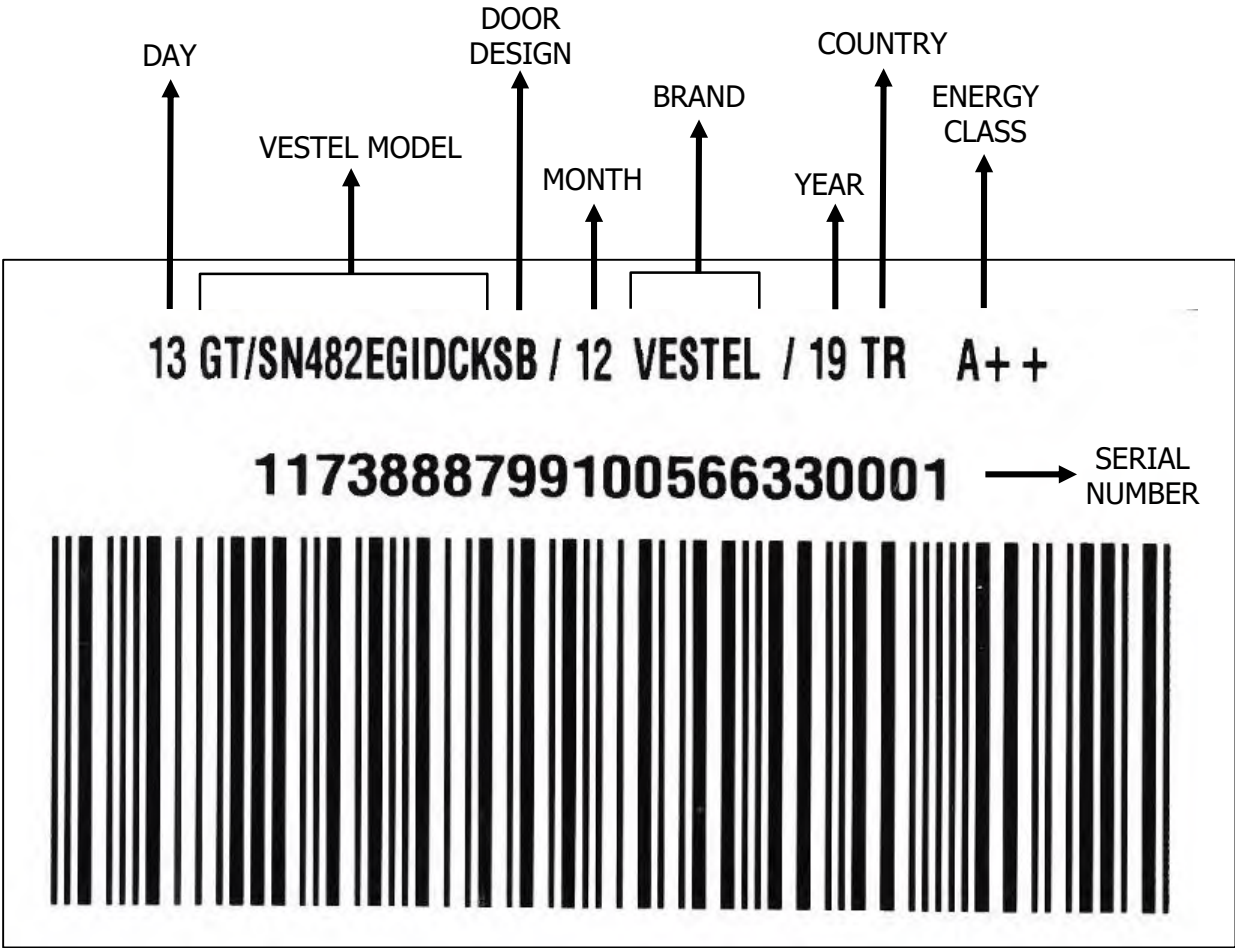
STATIC COMBI 252-266-278

TROUBLE-SHOOTING CHART



	STATIC COMBI 252-266-278	
	Barcode and Serial Number Explanation:	

Vestel refrigerator serial numbers are consist of 22 digits.





STATIC COMBI 252-266-278

Reversing the door



1. Hold the top hinge cover and remove it toward that direction (Pic-1)



Picture-1

2. Unscrew the screws fixing the top hinge and remove it. (Pic-2)



Picture-2

3. Displace the top door (Pic-3)



Picture-3

4. Unscrew the two screws fixing the middle hinge and remove it. (Pic-4)



Picture-4

**STATIC COMBI 252-266-278****Reversing the door**

5. Displace the bottom door. (Pic-5)



Picture-5

6. Unscrew the adjustable foot (Pic-6)



Picture-6

7. Unscrew the bottom hinge screws. (Pic-7)



Picture-7

**STATIC COMBI 252-266-278****Reversing the door**

8. Unscrew the bottom hinge pin and screw it to other hole. (Pic-8)



Picture-8

9. Screw the bottom hinge to the left bottom side of refrigerator. Screw the adjustable foot there. (Pic-9)



Picture-9

10. Unscrew the two screws fixing stopper and stopper support plate under the cooler door. After that screw the other side. (Pic-10)



Picture-10



STATIC COMBI 252-266-278

Reversing the door



11. Replace the top bushing and the top bushing cap at the bottom door. (Pic-11)



Picture-11

12. Remove the support plastic and then metal stopper placed under the upper door. (Picture-12.2) Then re screw these parts to the other side symmetrically. (remember the screw for the metal part must be screwed to the hole which is closer to the bushing). Do not use cordless screwdriver for these screws.



Picture-12.1



Picture-12.2

13. Remove the hinge cover on the top panel and replace to other side.(Pic-13)



Picture-13

**STATIC COMBI 252-266-278****Reversing the door**

14. Place the bottom door (Pic-14.1) and rotate the middle hinge by 180°. After that, Screw to the right side on the middle sheet. (Pic-14.2)

**Picture-14.1****Picture-14.2**

15. Place the top door to the middle hinge and screw the top hinge to the top panel. (Pic-15)

16. Place the top hinge cover. (Pic-16)

**Picture-15****Picture-16**

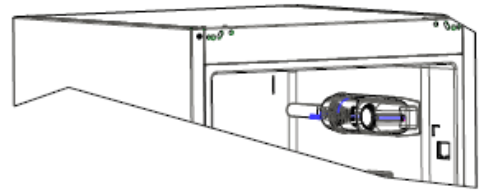
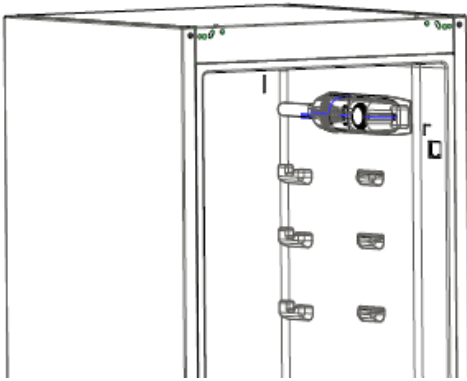


STATIC COMBI 252-266-278

INSTRUCTIONS

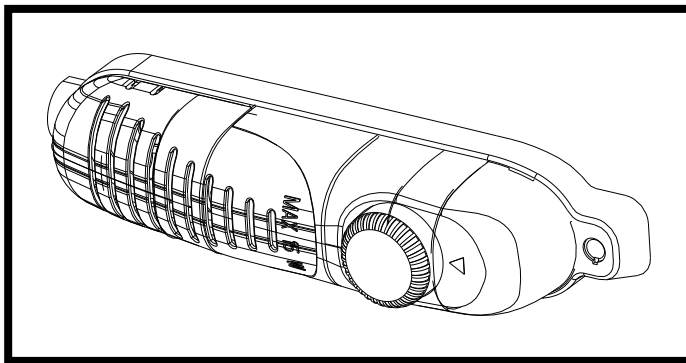


Thermostat Setting



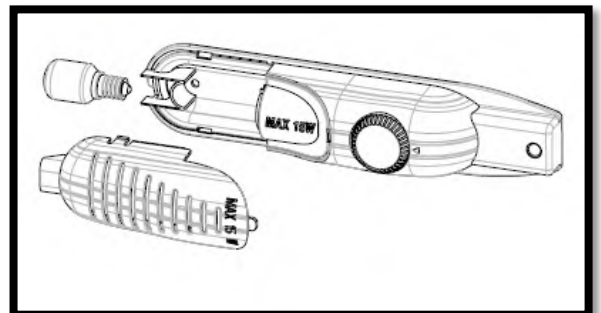
Thermostat Control

- This knob is used to control the temperature of the freezer and refrigerator parts automatically. It can be set to any value between “0” and “5” positions.
- “0” position indicates that the thermostat is “off”. The refrigerator is “off” on this setting.
- By turning the knob between “1” and “5”, you can increase or decrease the cooling degree.
- The refrigerator is designed to get optimum performance when the thermostat knob is set between position “2” to “4”.



Replacement of Refrigerator Lamp

- 1- Unplug your fridge.
- 2- Remove the cover of the box from the claws using a screwdriver.
- 3- Replace with a bulb of maximum 15 Watts.
- 4- Install the cover.
- 5- Wait for 5 minutes before re-plugging and bring the thermostat to its original position.



**STATIC COMBI 252-266-278****INSTRUCTIONS****Replacement of Thermostat**

CAUTION: The plug must be pulled out before the mainboard group is removed.

- 1) Remove screws which are attached two sides of the thermostat



- 3) Take off all cable connection and pull thermostat bulb out



- 4) Take off the lamp and rotate the lamp holder to the position at below picture





STATIC COMBI 252-266-278

INSTRUCTIONS



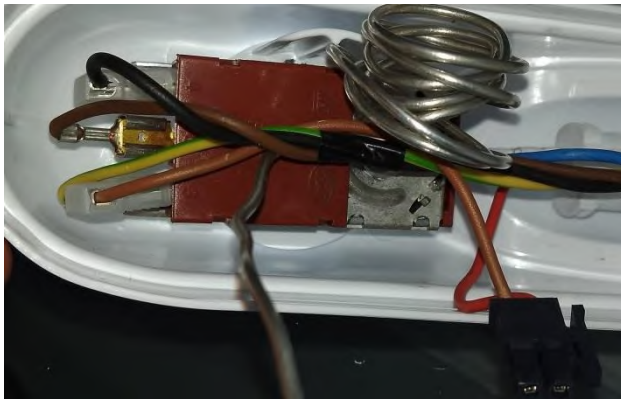
5) Firstly take off the button and screw, change the thermostat



6) Place the thermostat, screws is tightened, insert the button

7) Place and turn the lamp holder to the position to lock



8) Connect cables as shown below



9) Send the thermostat bulb pipe throughout the hole until it end

10) Plug the black socket to the frige

11) Close the lamp cover ve screws are tightened which are attached two sides of the thermostat

	STATIC COMBI 252-266-278	
	REFRIGERANT CYCLE DIAGRAM	

