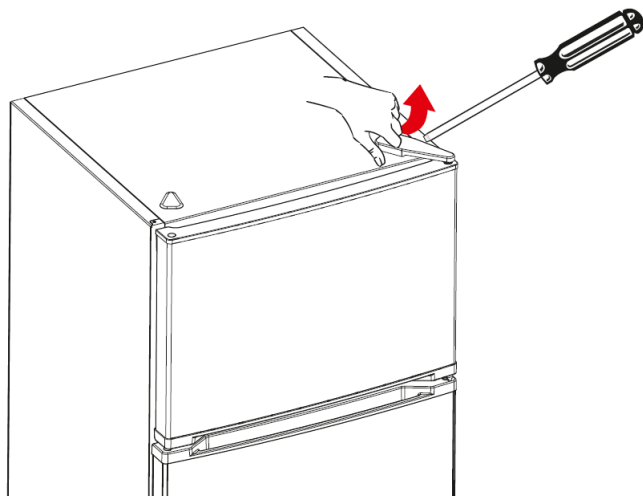
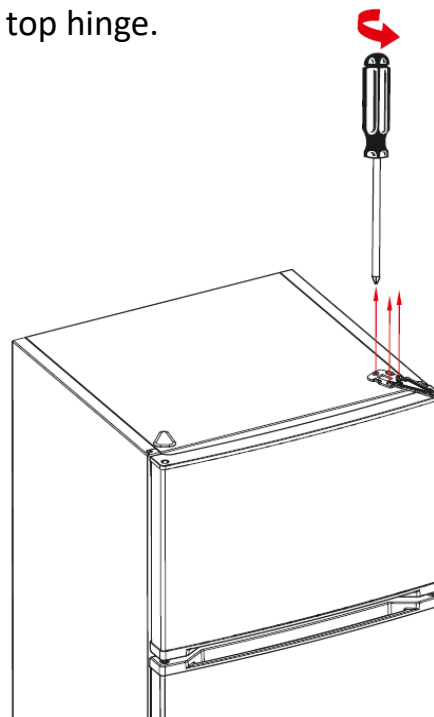


## Changing The Door Swing Direction to Right Hand

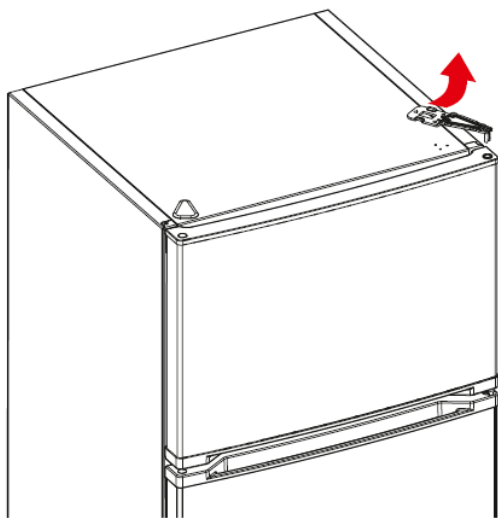
Hold the top hinge cover and remove it toward that direction.



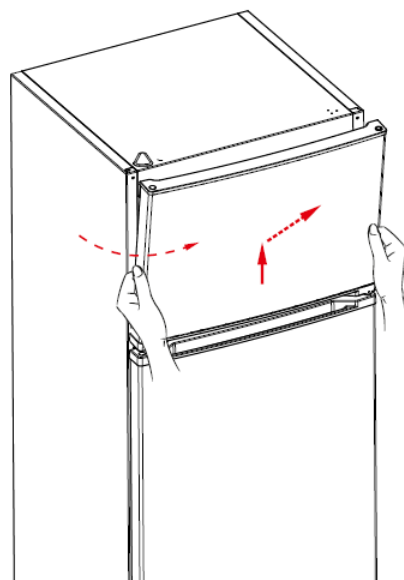
Unscrew the screws fixing the top hinge.



Remove the top hinge.

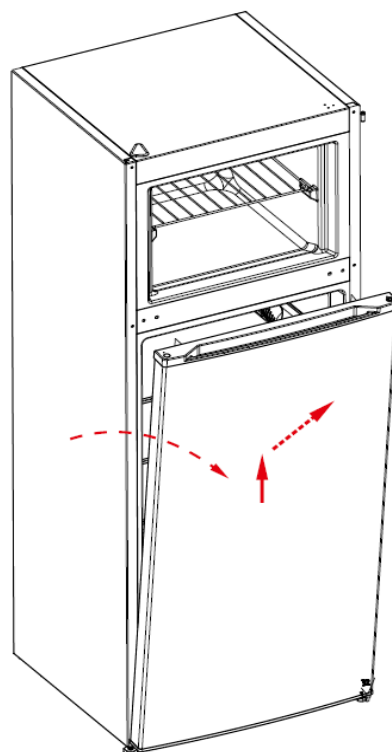
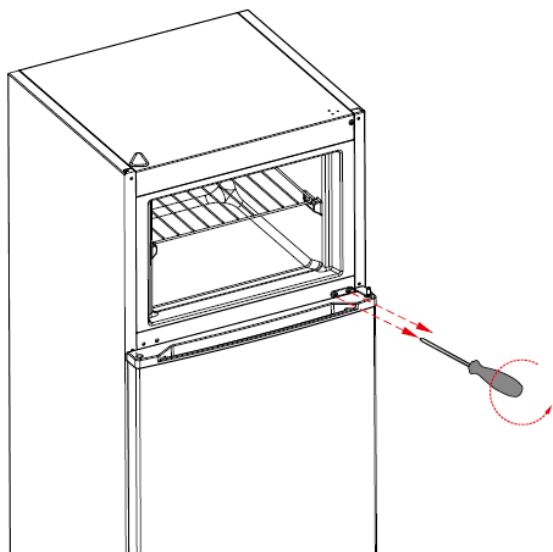


Displace the top door



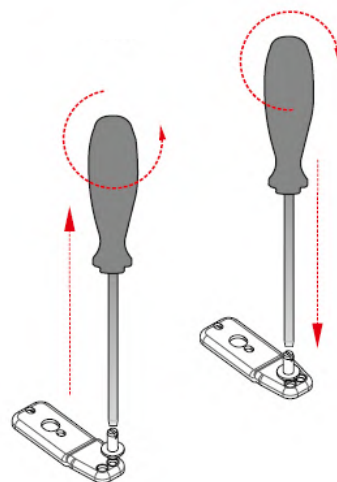
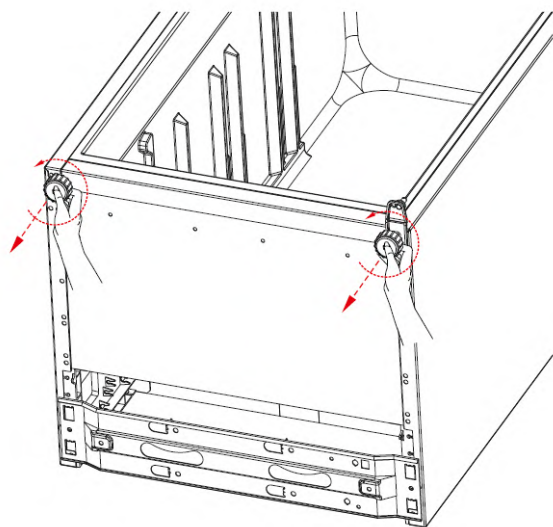
Unscrew the two screws fixing the middle hinge and remove it.

Displace the bottom door.

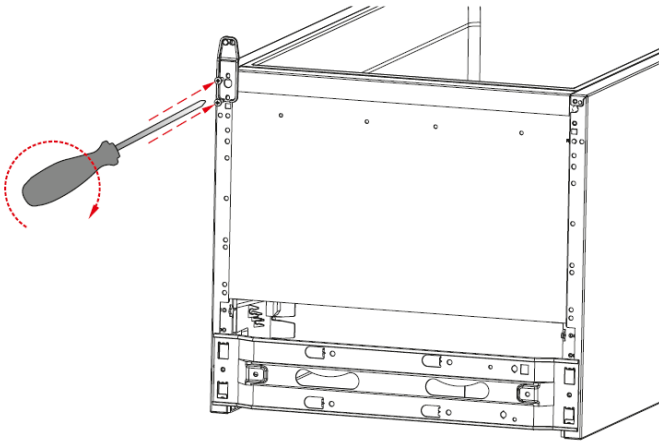


Dismantle both leveling feet and unscrew the bottom hinge fixing screws and remove it.

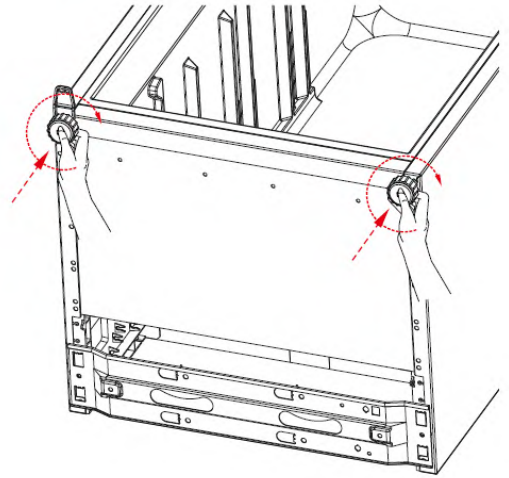
Unscrew the bottom hinge pin and screw in the next hole.



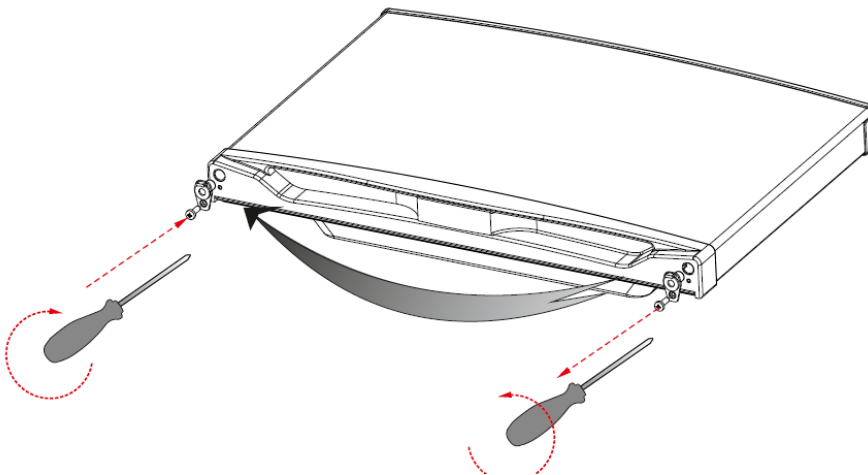
Then screw the hinge to left side of the refrigerator



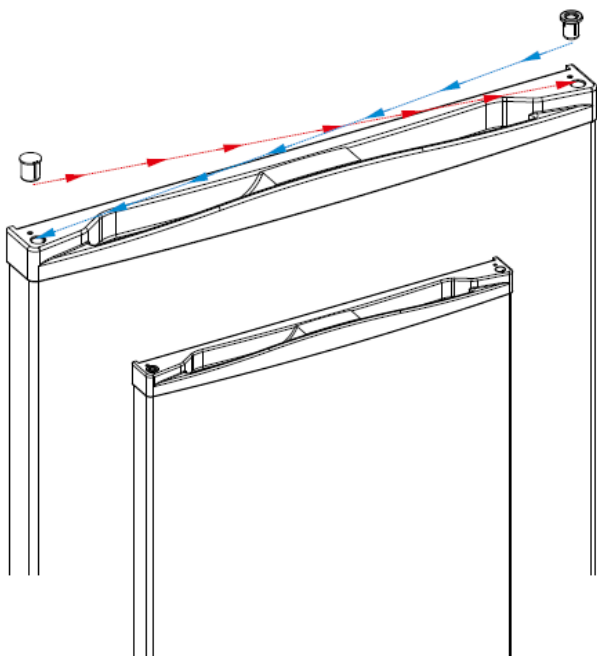
Screw the both leveling feet



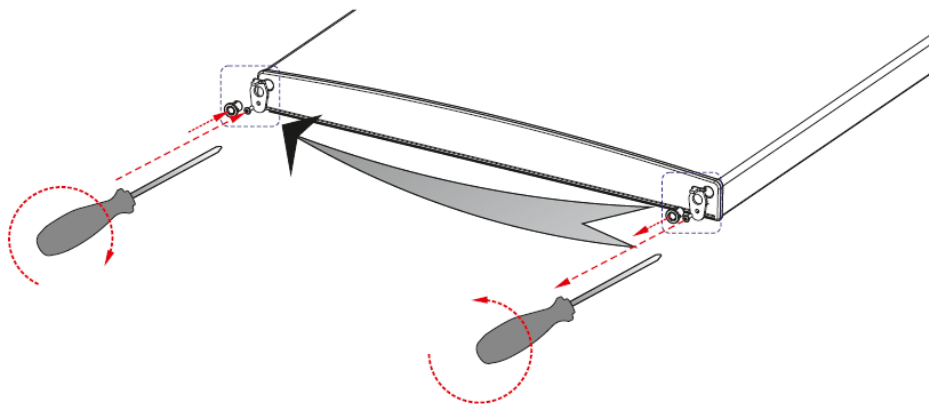
Remove the stopper and bushing under the upper door.  
Then re screw these parts to the other side symmetrically.  
(remember the screw for the stopper be screwed to the hole which is closer to the bushing). Do not use cordless screwdriver for these screws.



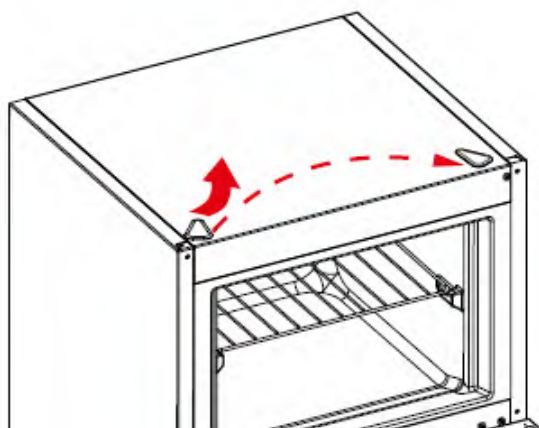
Replace the top bushing and the top bushing cap at the bottom door.



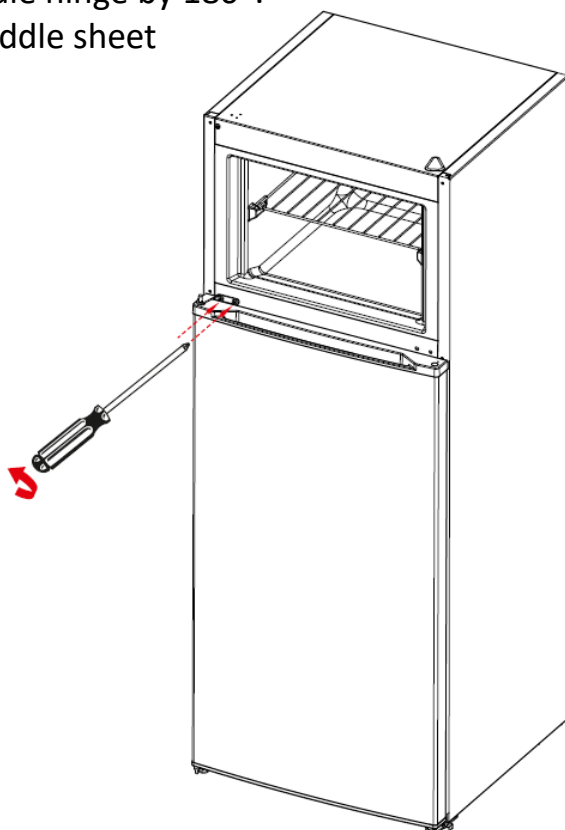
Unscrew the screws fixing stopper and bushing under the bottom door.  
After that screw the other side.



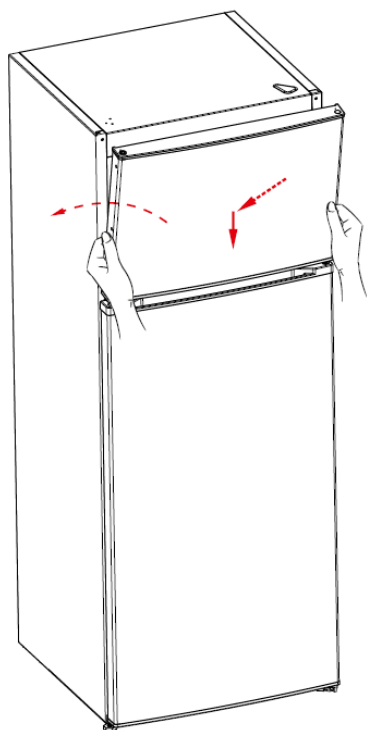
Replace the top hinge cover and hinge cap.



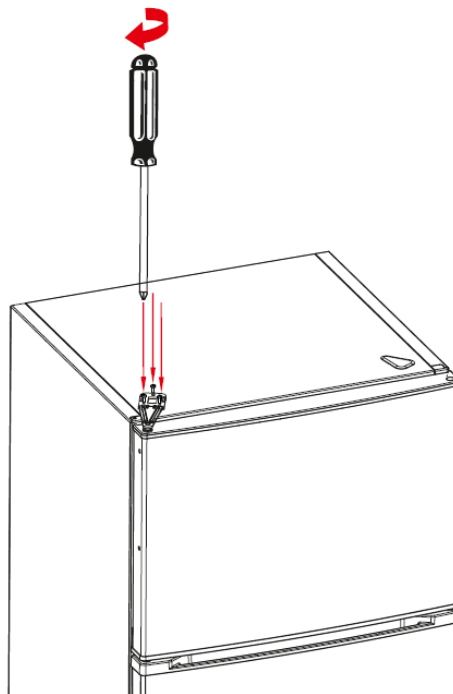
Place the bottom door and rotate the middle hinge by 180°.  
After that, Screw to the right side on the middle sheet



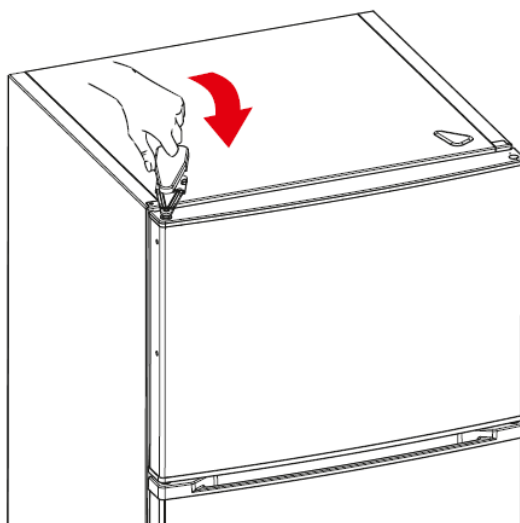
Place the top door to the middle hinge.





Screw the top hinge to the top panel.



Place the top hinge cover.



	<b>233-263-283 (NEW DESIGN)</b>	
	<b>THERMOSTAT SETTING</b>	

The thermostat automatically regulates the temperature inside the fridge and freezer compartments. To change the temperature the knob can be rotated from position 1 to 5 (5 being the coldest).

For short-term storage of food in the freezer compartment, you can set the knob between 1 and 3 position.

•For long-term storage of food in the freezer compartment, you can set the knob to the 3-4 position.

**Note that;** the ambient temperature, temperature of the freshly stored food and how often the door is opened, affects the temperature in the refrigerator compartment. If required, change the temperature setting.

**Super freezing:** This switch shall be used as süper freeze switch. For maximum freezing capacity, please turn on this switch before 24 hours placing fresh food. After placing fresh food in the freezer, 24 hours ON position is generally sufficient. In order to save energy, please turn off this switch after 24 hours from placing fresh food.



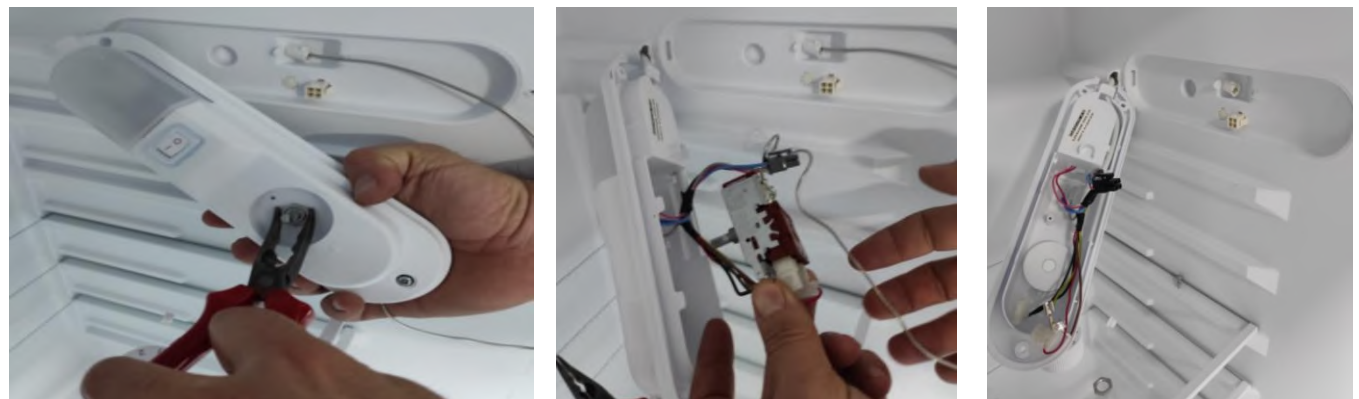


***CAUTION: The plug must be pulled out before the thermostat is removed.***

Remove screw which is attached one side of the thermostat



Firstly take off the button and screw and then take off all cable connection and pull thermostat bulb out



Take off the lamp cover, cable connection and screw at below picture

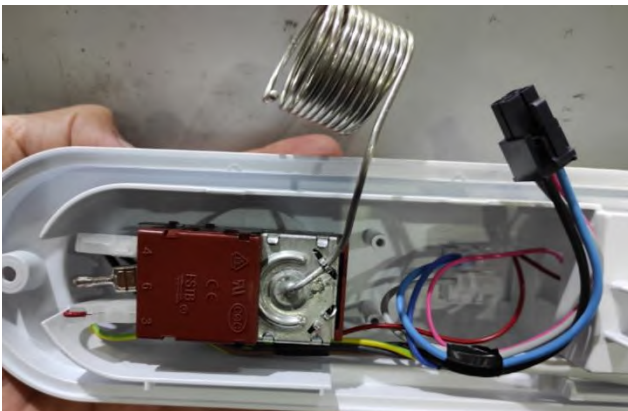




Firstly cut off the black band and change the thermostat



Place the thermostat, screws is tightened, insert the button  
Connect cables as shown below



Send the thermostat bulb pipe throughout the hole until it end

Plug the black socket to the frige

Close the lamp cover ve screw is tightened which are attached one side of the thermostat.

***CAUTION: The plug must be pulled out before the thermostat led is removed.***

Screwdriver into the gap and remove the led cover.



Remove screw led



Disconnect the connector and change the led.



Pull the gasket towards starting from top right corner  
Slowly pull the rest of the gasket.  
Completely remove the gasket from door.



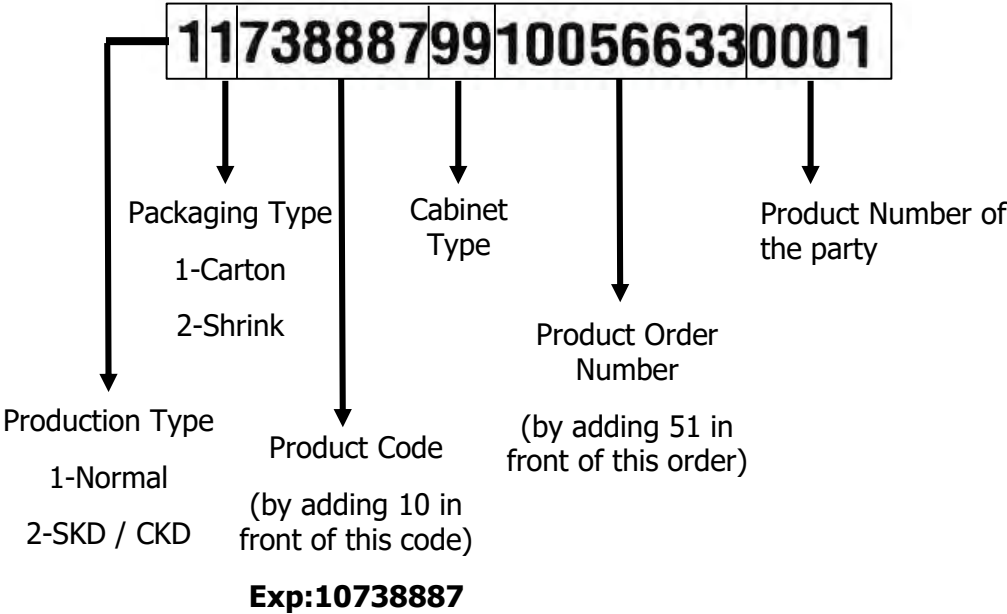
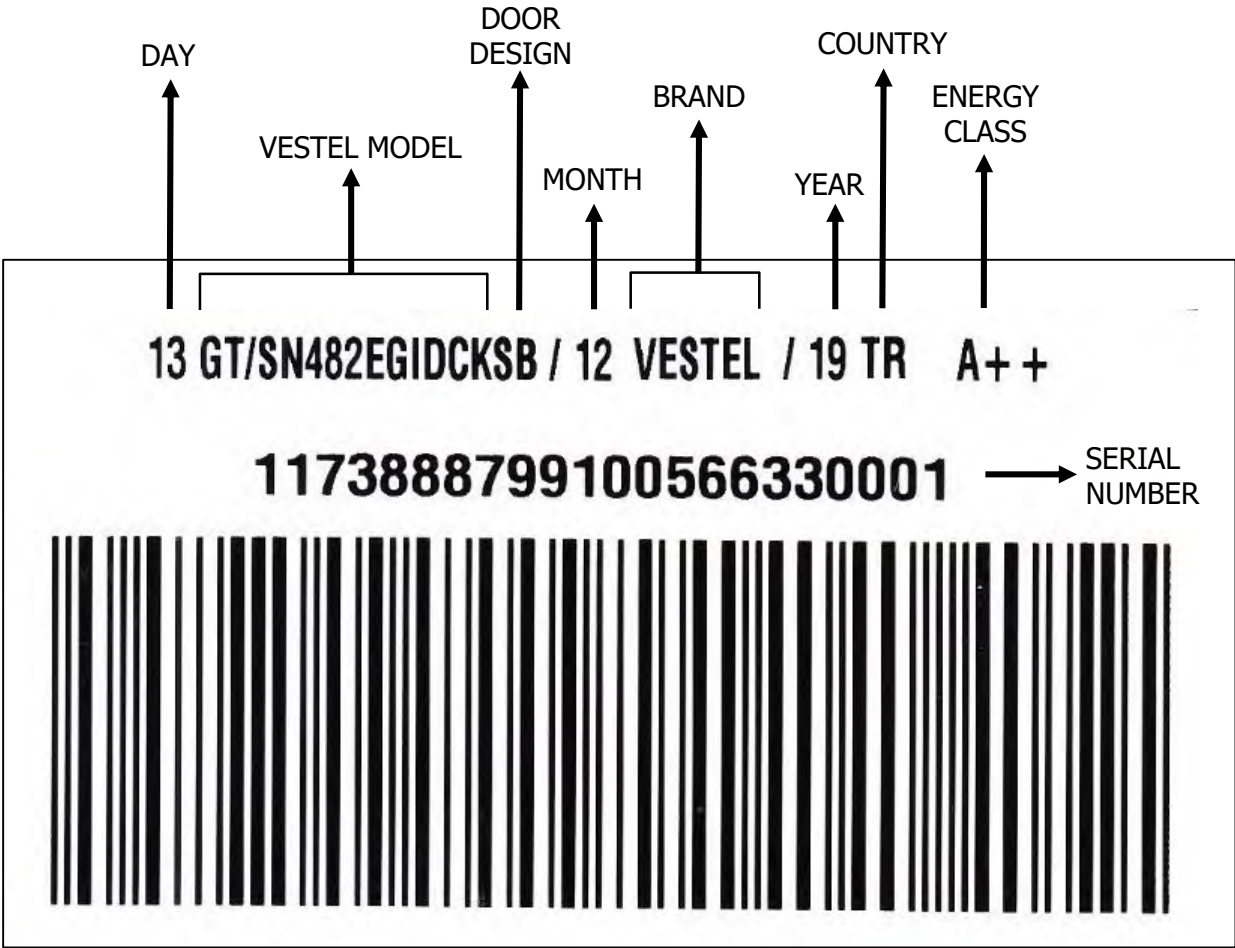
Check the replacement gasket form  
Starting with upper right corner , press on the gasket until it fits to its place..  
Place the other sides of the gasket with the help of your thumb

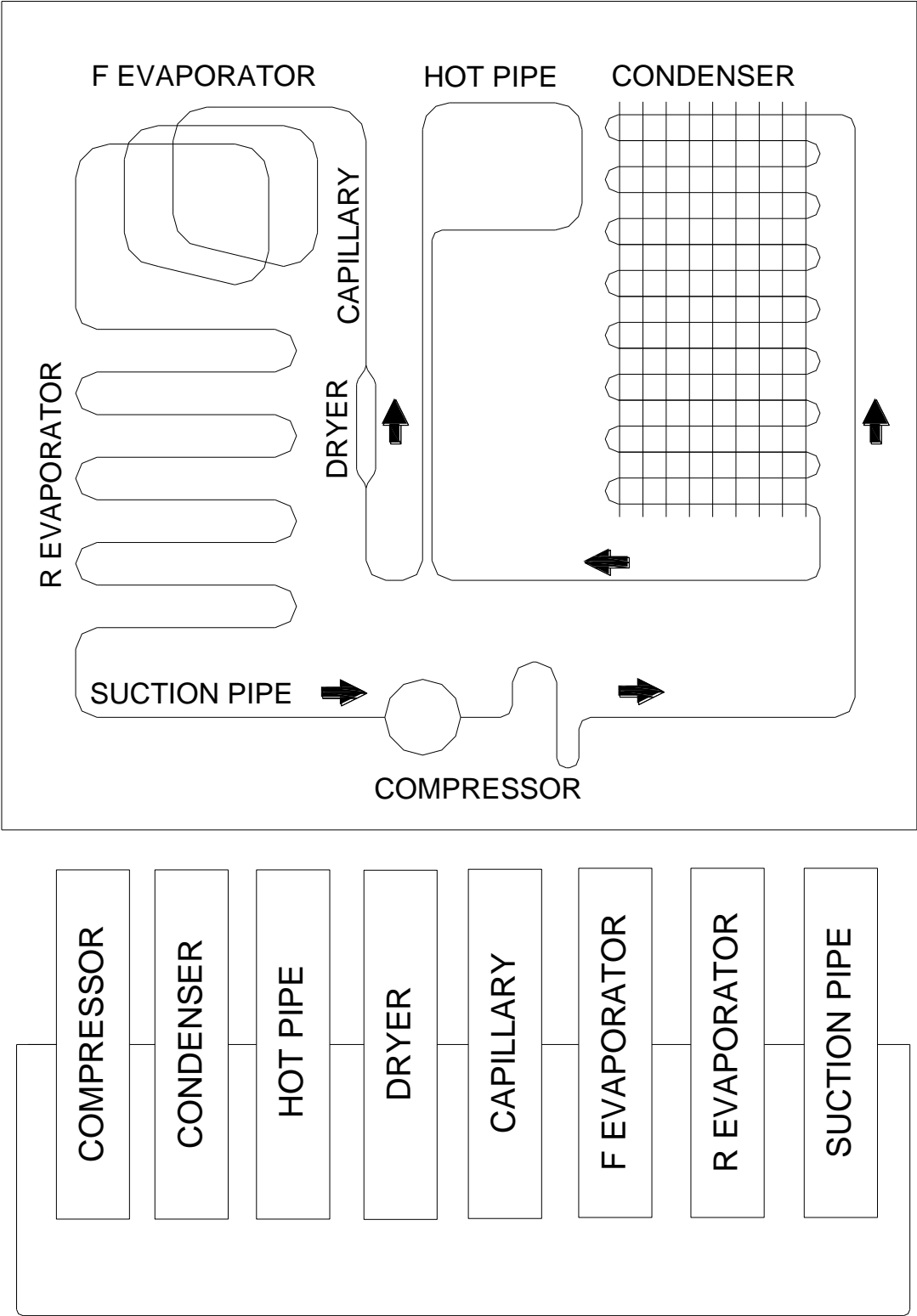


After the replacement check if there any non-fitting point on the gasket. Also check if there any opening at the gasket while the door is closed. If so that might cause condensation/icing or insufficient cooling/freezing. To prevent this soften the form of the gasket with the help of a hair dryer or hot water and make sure that all points are closing perfectly.

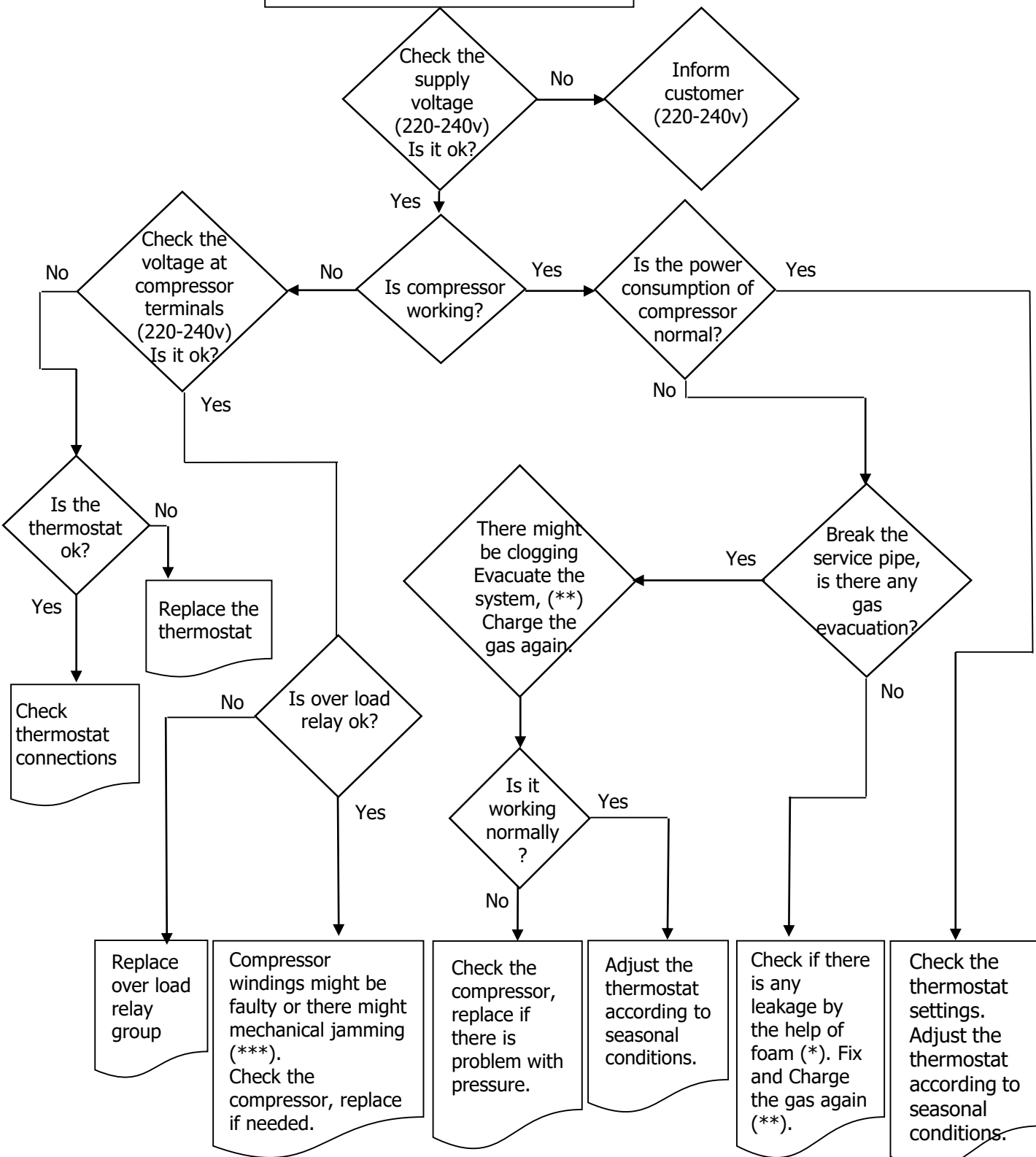


Vestel refrigerator serial numbers are consist of 22 digits.



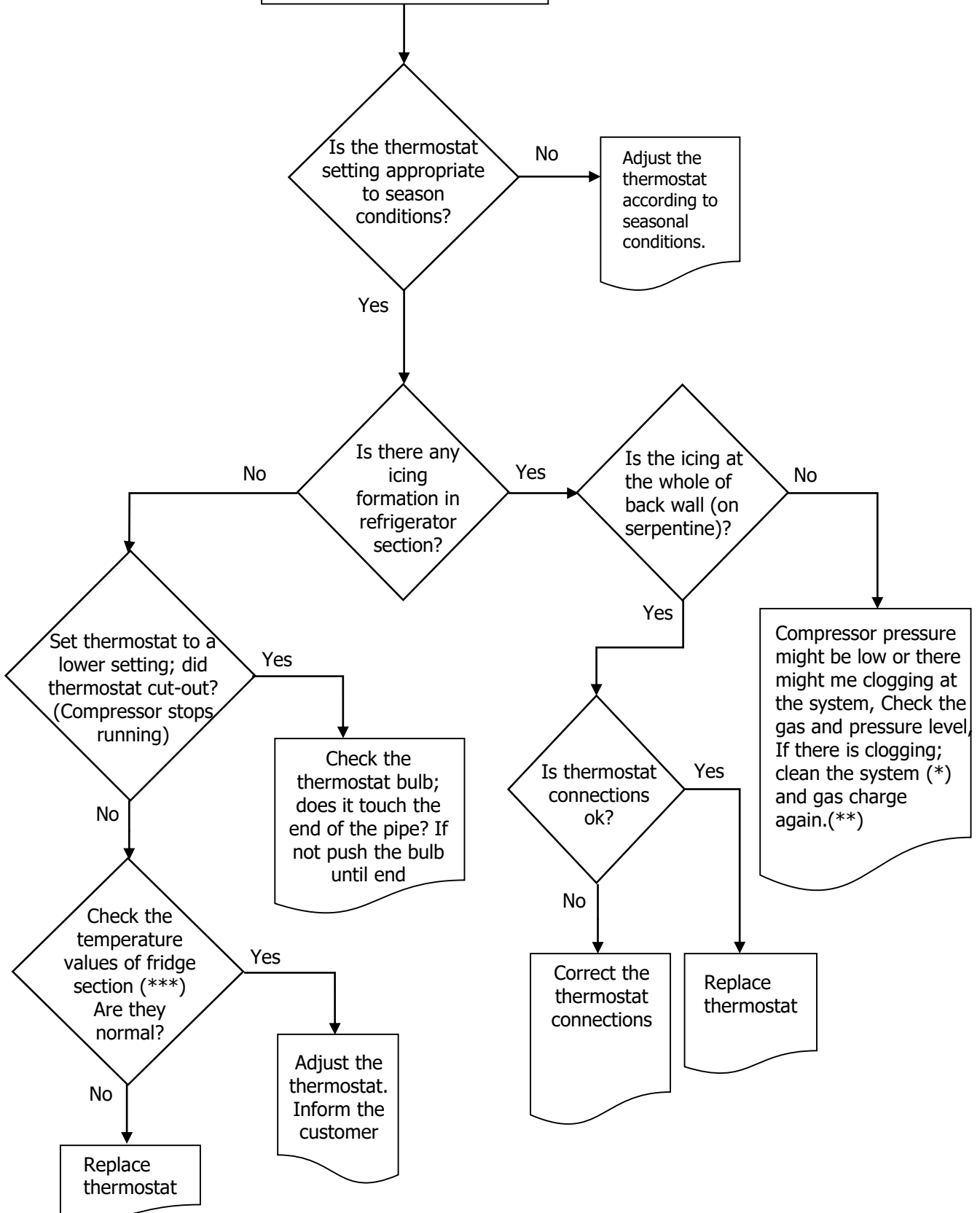


### No/Insufficient cooling



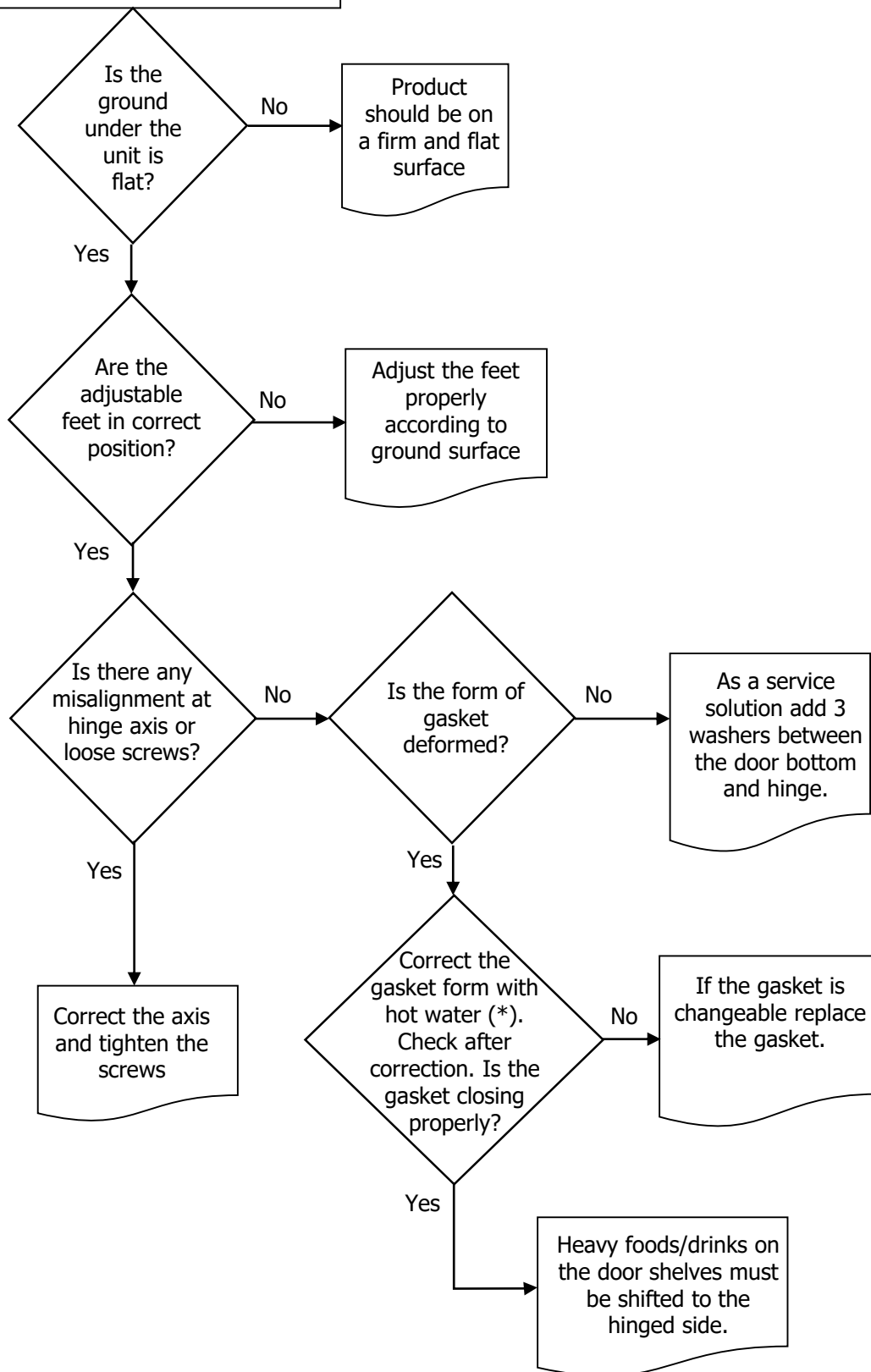
(\*) Check all pipes, tubes and welding points against gas leakage. (\*\*) Before charging gas to system, change dryer and vacuum at least 30 minutes, then charge the system with amount written on label (\*\*\*) Compressor primary winding should be around 10 Ω and secondary around 15 Ω (at 25°C ambience temp.)

### Excessive Cooling





### Door/Gasket Adjustment



(\*) Correct the gasket form by the help of hot water and hair dryer.

