

Thermostat Setting

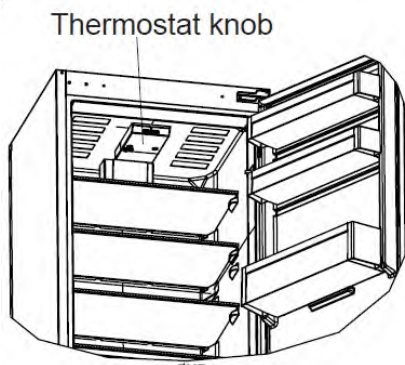
It ensures that the temperature settings in the cooling and freezing compartments of your refrigerator are performed automatically. It may be set to any value ranging from 1 to 5. As you turn the thermostat setting knob from 1 to 5, the temperature decreases. To save energy in winter months, operate your refrigerator in a lower position.

Fridge compartment thermostat knob;

4 - 5 : For further cooling.

2 - 3 : For normal use.

1 : For less cooling.



Warnings about Temperature Adjustments

- It is not recommended that you operate your fridge in environments colder than 10 oC in terms of its efficiency.
- Temperature adjustments should be made according to the frequency of doors openings and the quantity of food kept inside the fridge-freezer.
- Your fridge-freezer should be operated up to 24 hours according to the ambient temperature without interruption after being plugged in to be completely cooled. Do not open doors of your fridge-freezer frequently and do not place much food inside it in this period.
- During power cut, to prevent any compressor problem you should unplug the fridge-freezer. You should delay plugging in 5 – 10 minutes after your power supply returns. Of you plug out the fridge-freezer for a reason you should wait at least 5 min to replug. It is important for avoiding damage to fridge-freezer's components.
- Your fridge-freezer is designed to operate in the ambient temperature intervals according to the climate class stated on the information label. In terms of cooling effectiveness, we do not recommend operating your fridge-freezer outside of the stated temperature values.
- This equipment is designed for use at an ambient temperature within the 16°C - 38°C range.

Climate class	Ambient temperature °C
T	Between 16 - 43 °C
ST	Between 16 - 38 °C
N	Between 16 - 32 °C
SN	Between 10 - 32 °C

FIN EVAP HEATER (120W) :

It is placed in the holes on the fin evaporator.

Function : To melt the ice formed on the fin evaporator.

THERMAL FUSE :

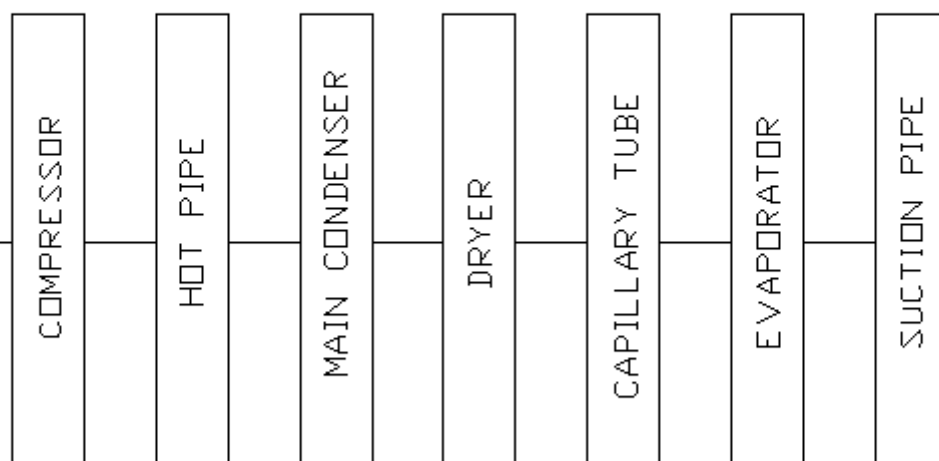
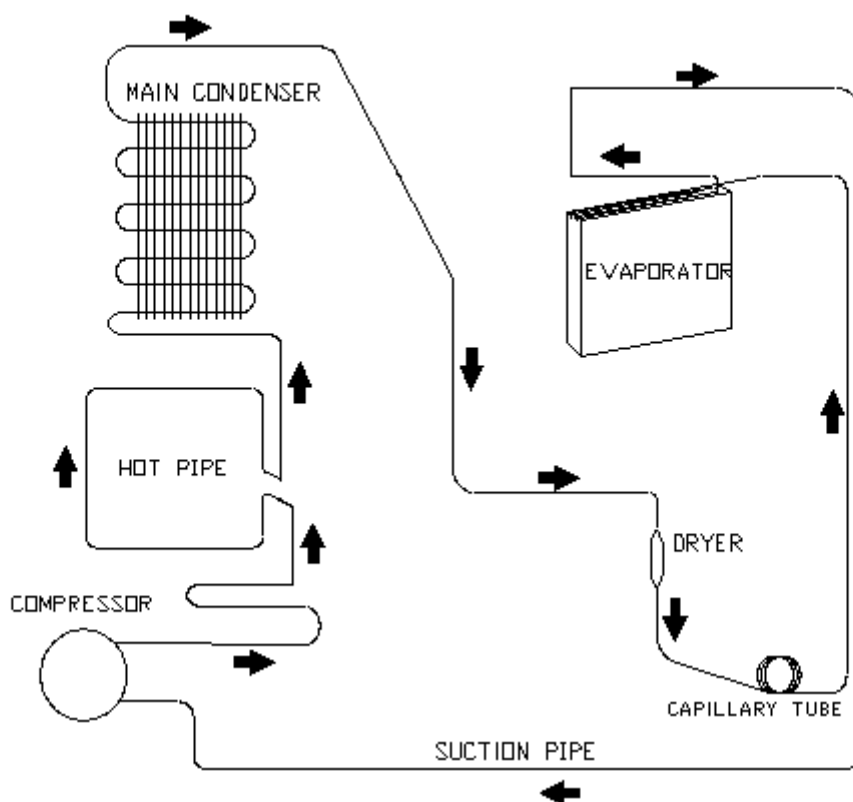
It is an additional protection. If the bi-metal thermostat does not switch-off the fin evap heater, the thermal fuse will blow off (76°C). In this case, all functions will stop.

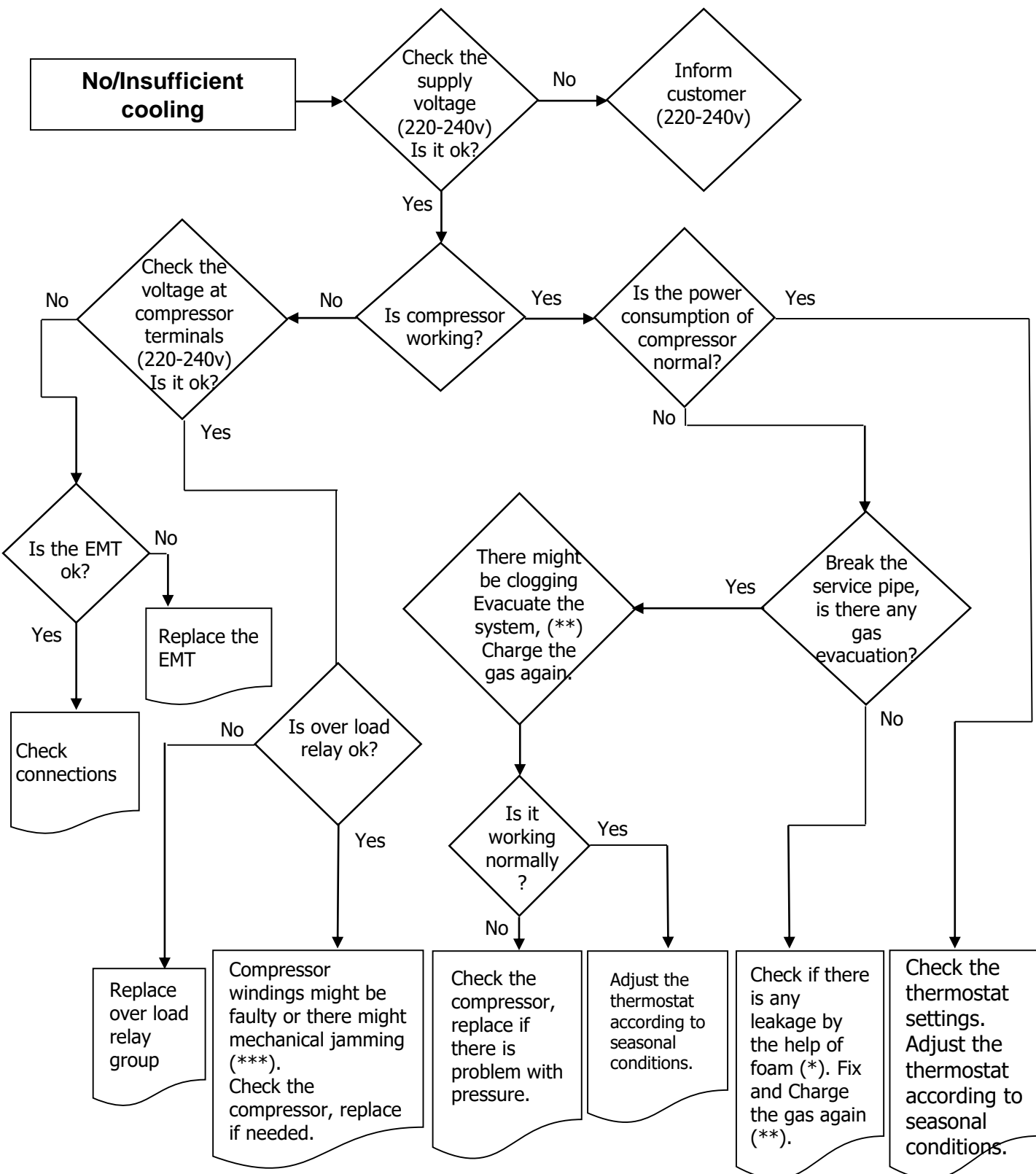
MANUAL DEFROST :

Turning the knob manually, from 5 to 1, and to 5 again, the manual defrost feature will be activated automatically.



Thermostat knob



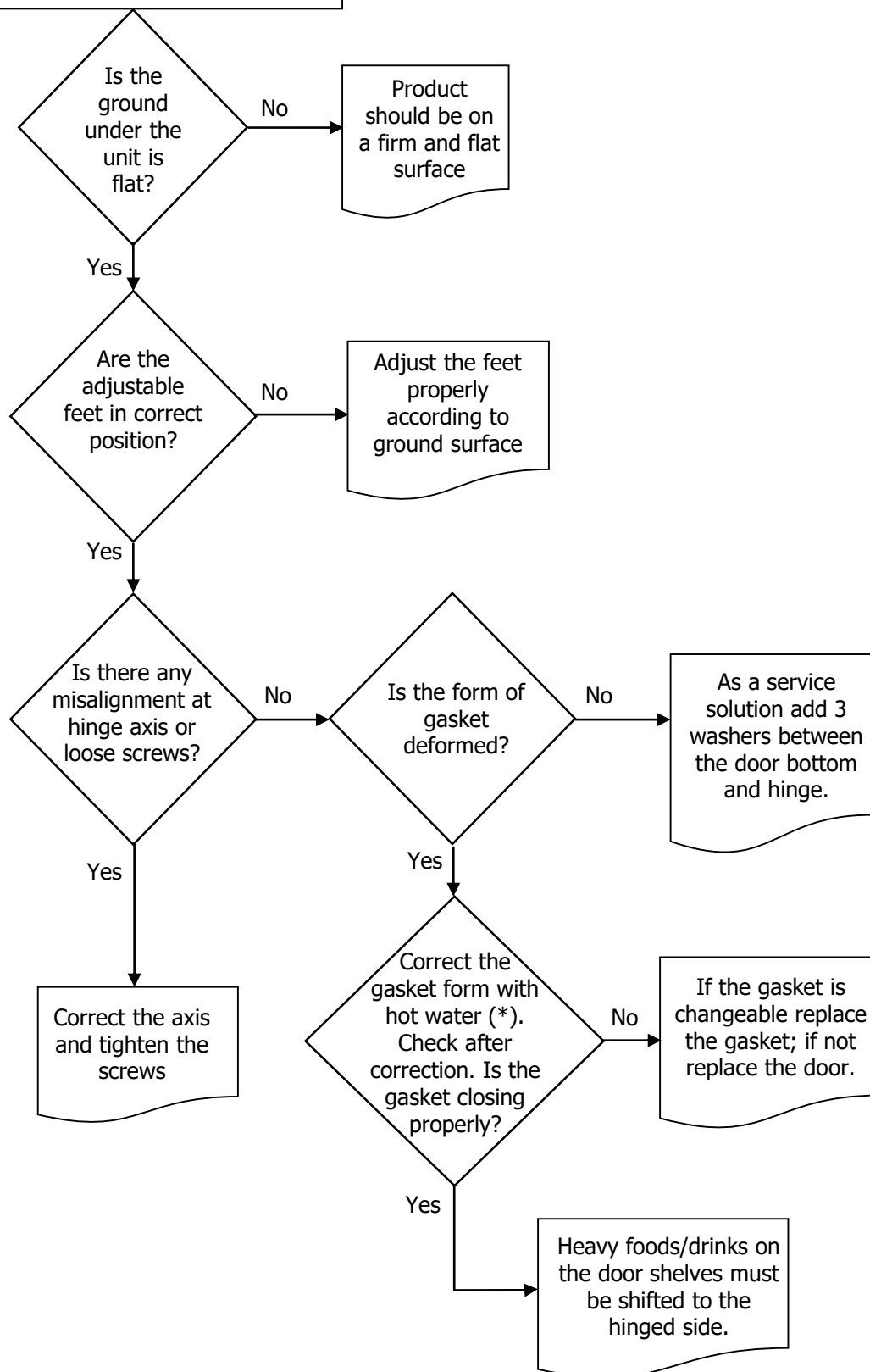


(*) Check all pipes, tubes and welding points against gas leakage.

(**) Before charging gas to system, change dryer and vacuum at least 30 minutes, then charge the system with amount written on label

(***) Compressor primary winding should be around 10 Ω and secondary around 15 Ω (at 25°C ambience temp.)

Door/Gasket Adjustment



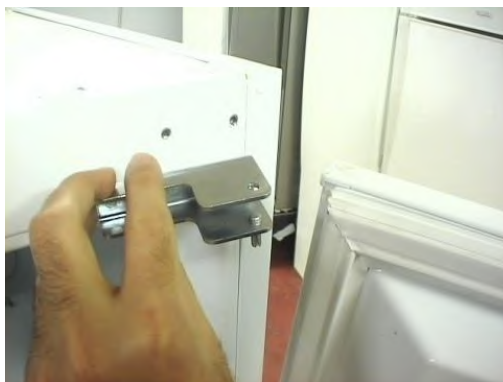
(*) Correct the gasket form by the help of hot water and hair dryer.

Changing The Door Swing Direction to Right Hand

1- Unscrew the two screws fixing the top hinge (Pic-1) and remove the refrigerator door. (Pic-2)



Picture-1



Picture-2

2- Unscrew the two screws fixing the middle hinge side bracket and remove it. (Pic-3)



Picture-3

3- Unscrew the two screws fixing the middle hinge (Pic-4) and remove the freezer door. (Pic-5)



Picture-4



Picture-5

4- Remove the bottom hinge pin (Pic-5) and insert it to the left side foot. (Pic-6)



Picture-5



Picture-6

5- Unscrew the middle hinge side bracked on the left and remove it. (Pic-7)
Remove the middle hinge screw caps (big) on the left side.



Picture-7

6- Assemble the refrigerator door. Rotate the middle hinge by 180° and screw it to the left side. (Pic-8) Than screw the middle hinge side bracked on the middle hinge. (Pic-9)



Picture-8



Picture-9

7- Remove the top hinge screw caps (big) on the left side (Pic-10) and insert them to the right side. (Pic-11) (You can find the new caps in the user manual bag)



Picture-10



Picture-11

8- Unscrew the pin of the hinge from Hole 1, rotate the top hinge by 180° and screw the pin to Hole 2. (Pic-12)



Picture-12

9- Assemble the freezer door and screw the top hinge to the left side. (Pic-13)



Picture-13

10- Screw the middle hinge side bracketed on the right of refrigerator. (Pic-14) and insert the middle hinge screw caps (big) on the right side. (Pic-15) (You can find the new caps in the user manual bag)



Picture-14



Picture-15

Replacement of Freezer Multiflow Cover

1. Displace the glass shelves and baskets if there is.
2. Unscrew the screw fixing the multiflow group. (Pic-1)
3. Removing the freezer bottom cover by flexing back side of it. (Pic-2)



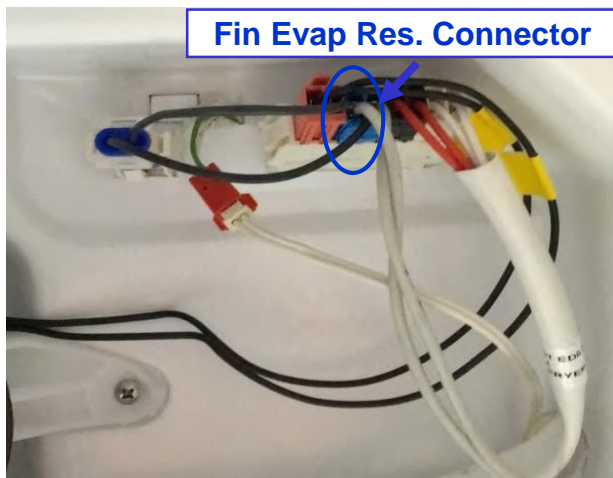
Picture-1



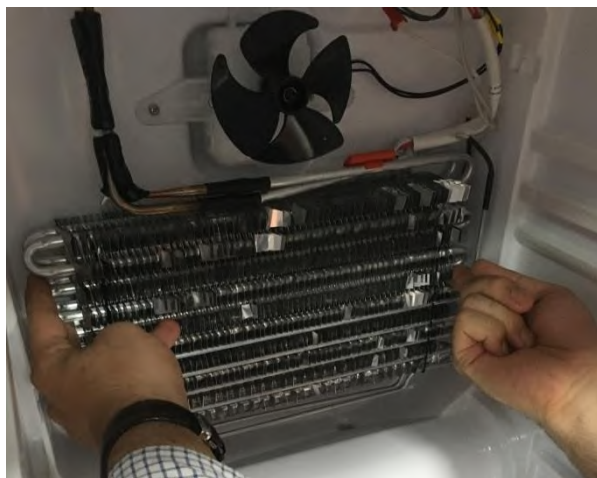
Picture-2

Replacement of Freezer Evap. Gr

1. Remove the fin evaporator resistance connectors from the sockets. (Pic-1)
(blue connector)
2. Displace the fin evaporator balanced by holding on both sides. (Pic-2)



Picture-1



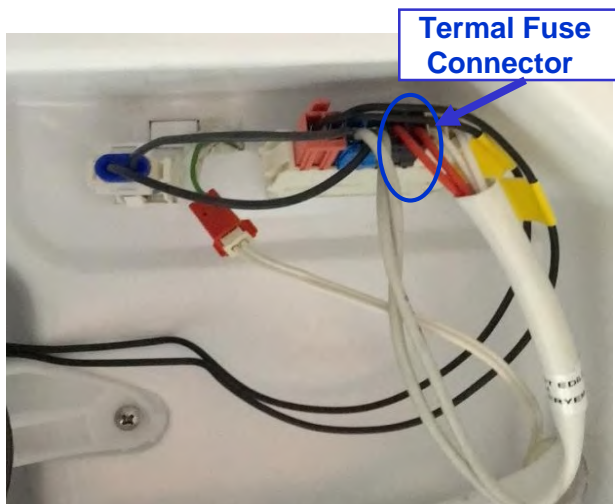
Picture-2

CAUTION: The fin evaporator should not be pulled upward-downward. Otherwise, the fin evaporator fixing plastics might be broken.

Replacement of Thermal Fuse

1. Remove the thermal fuse connector.
(Pic-1) (black-white connector)

2. Thermal fuse has two details. These details hold on to the pipe.
It could be removed easily.(Pic-2)



Picture-1



Picture-2

Replacement of Freezer Fan Motor

1. Remove the fan motor connector. (Pic-1)

2. Unscrew the fan motor fixing screws and displace the fan motor. (Pic-2)

3. Remove the propeller. (Pic-3)



Picture-1



Picture-2



Picture-3

4. Displace the details on the fan motor box. (Pic-4)



Picture-4



Fan Motor Components

Replacement of Door Switch

1. Insert a screwdriver into the gap and pull the door switch.



Picture-1

2. Disconnect the connectors. And remove the door switch.



Picture-2

Replacement Turbo Fan Motor

1. Remove the fan motor cover. (Pic-1)



Picture-1

2. Unscrew the two screws and remove the fan motor body. (Pic-2)



Picture-2

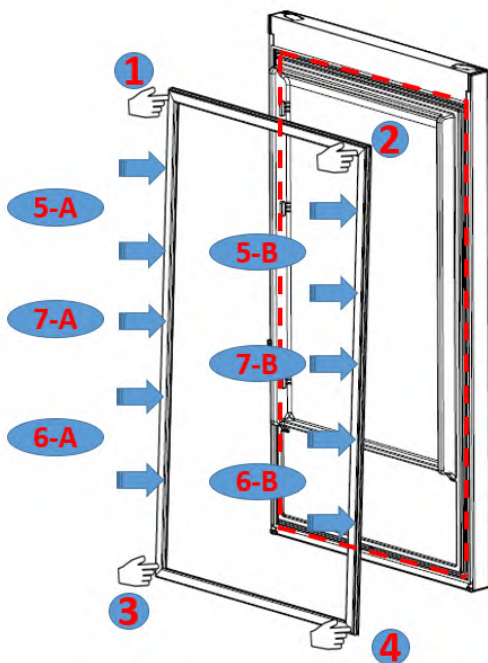
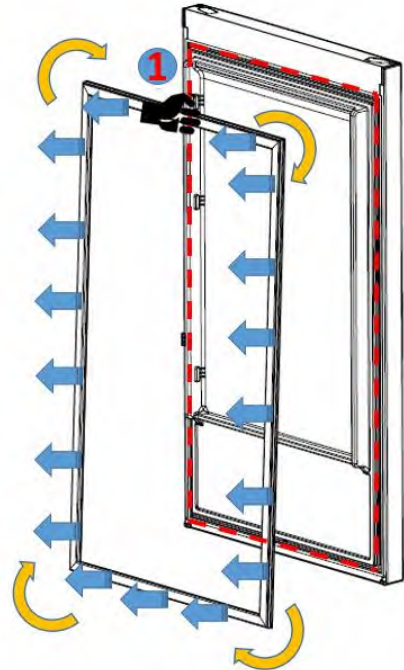
3. Take out the sockets and replace the fan motor (Pic-3)



Picture-3

Replacement of Door Gasket

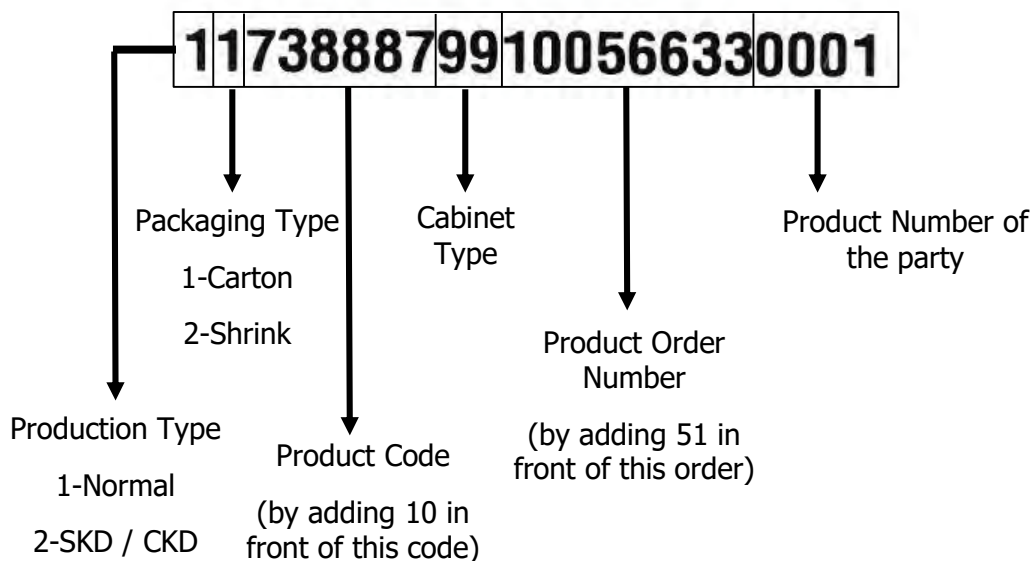
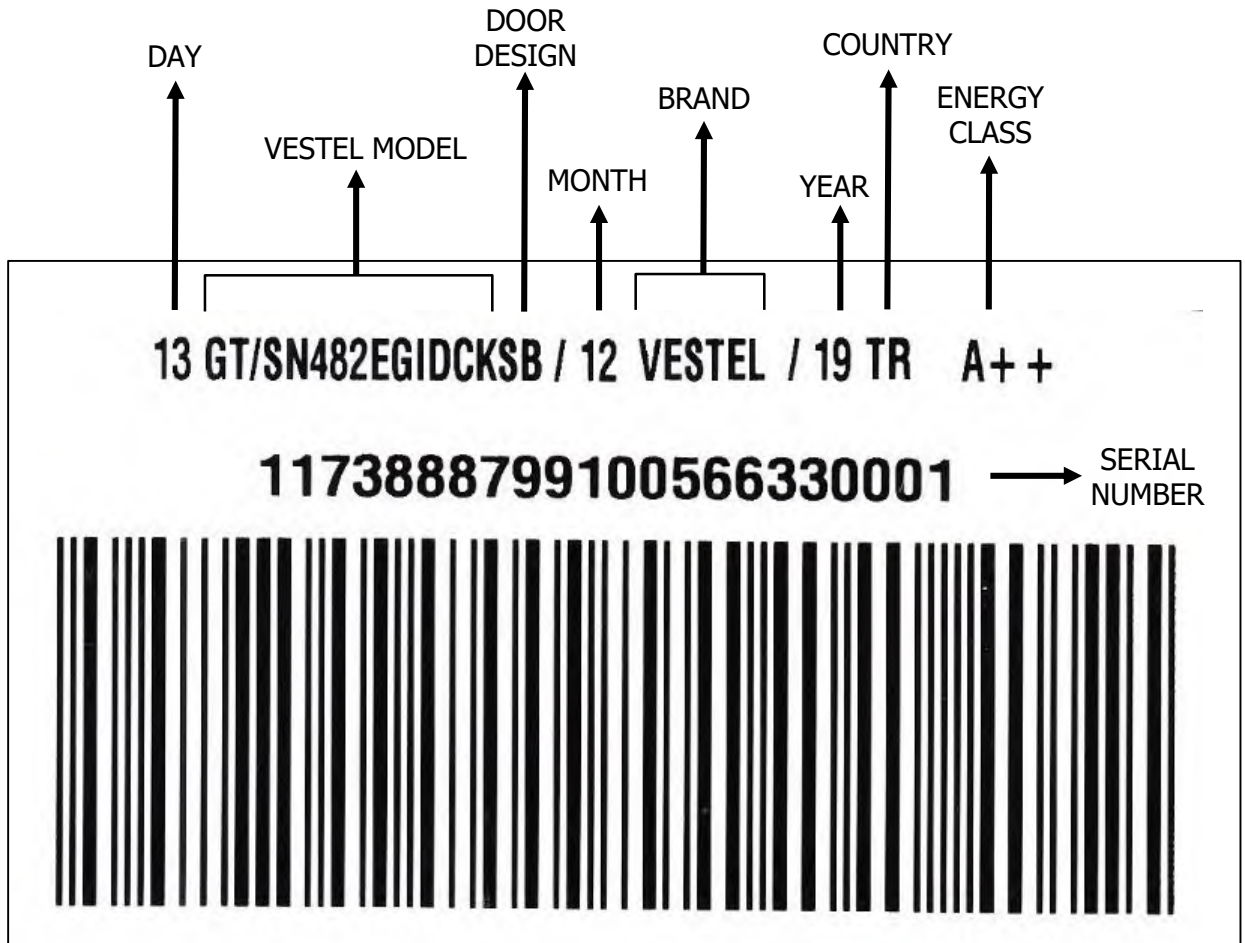
Pull the gasket towards starting from top right corner
Slowly pull the rest of the gasket.
Completely remove the gasket from door.



Check the replacement gasket form
Starting with upper right corner, press on the gasket until it fits to its place..
Place the other sides of the gasket with the help of your thumb

After the replacement check if there any non-fitting point on the gasket. Also check if there any opening at the gasket while the door is closed. If so that might cause condensation/icing or insufficient cooling/freezing. To prevent this soften the form of the gasket with the help of a hair dryer or hot water and make sure that all points are closing perfectly.

Vestel refrigerator serial numbers are consist of 22 digits.



Exp:10738887