

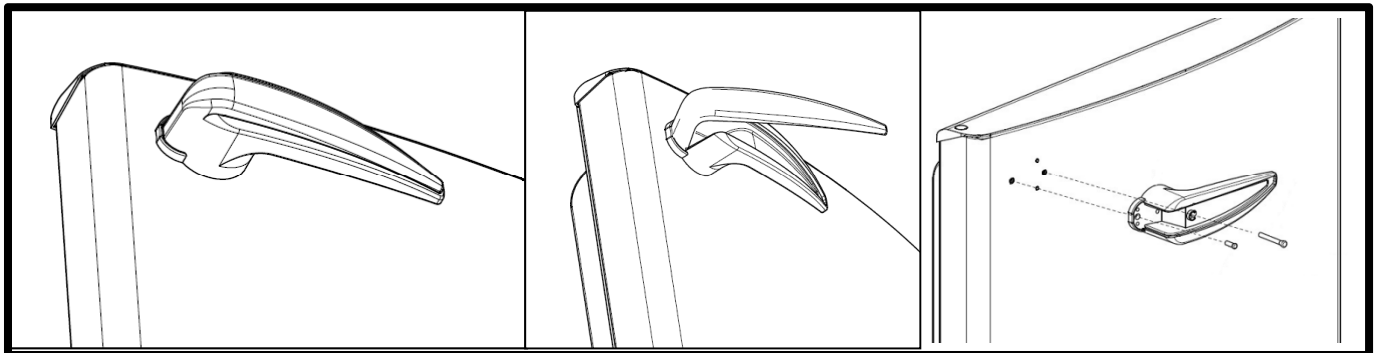
 <b>WHITE GOODS</b>	<b>DOUBLE DOOR 345/400 TURBO</b>	<b>CUSTOMER SUPPORT</b>
	<b>ASSEMBLE &amp; DISASSEMBLE</b>	

### **A - Changing The Thermostat :**

- 1) Remove the lamp cover and unscrew the fixing screw.
- 2) Remove the thermostat box by pulling it and disconnecting the cable terminals.
- 3) Remove the thermostat knob by pulling forward. Loosen the nut which is fixing the thermostat.
- 4) Pull out the thermostat bulb from the housing.
- 5) Replace the thermostat with the new one and assemble the thermostat box following the steps backwards.


### **B - Changing The Door Handle**

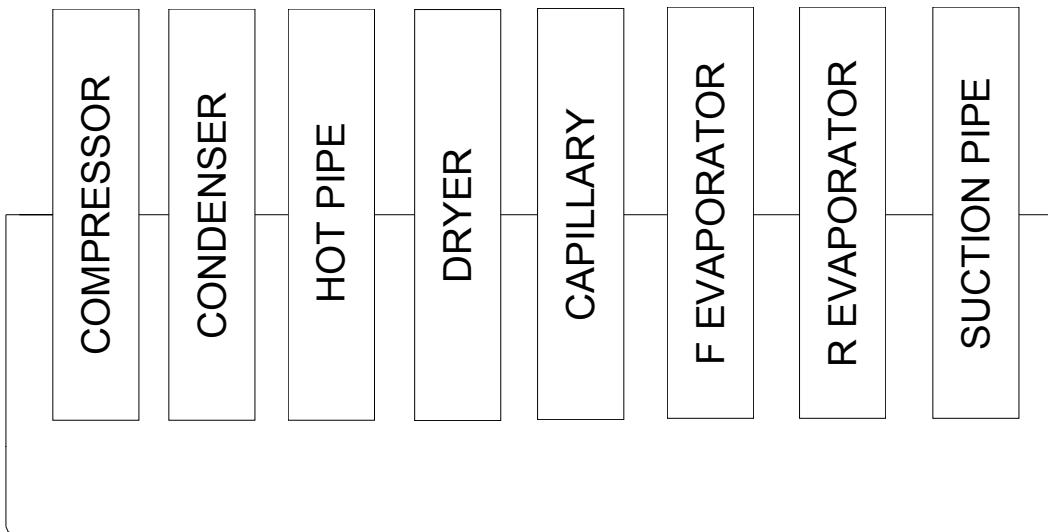
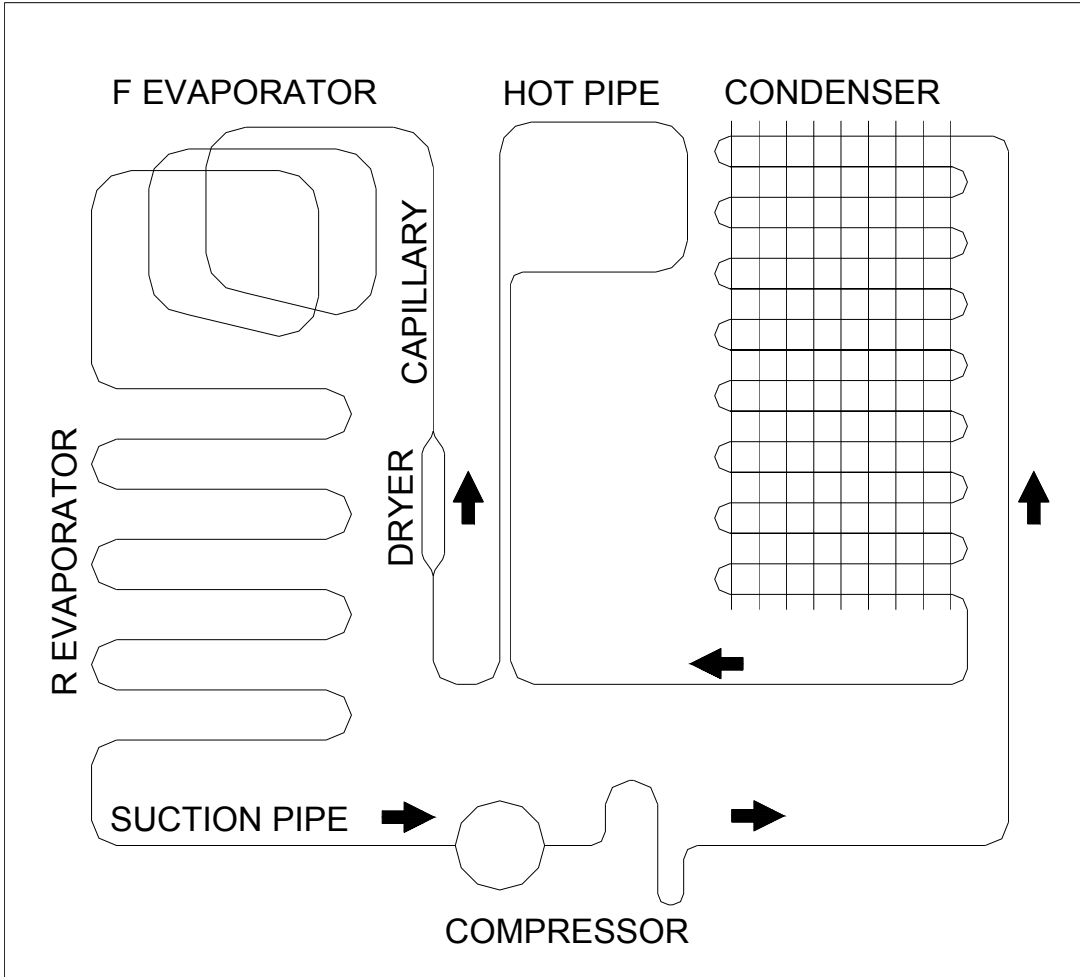
- 1) Remove the handle cover.
- 2) Unscrew the fixing screws and remove the handle body.

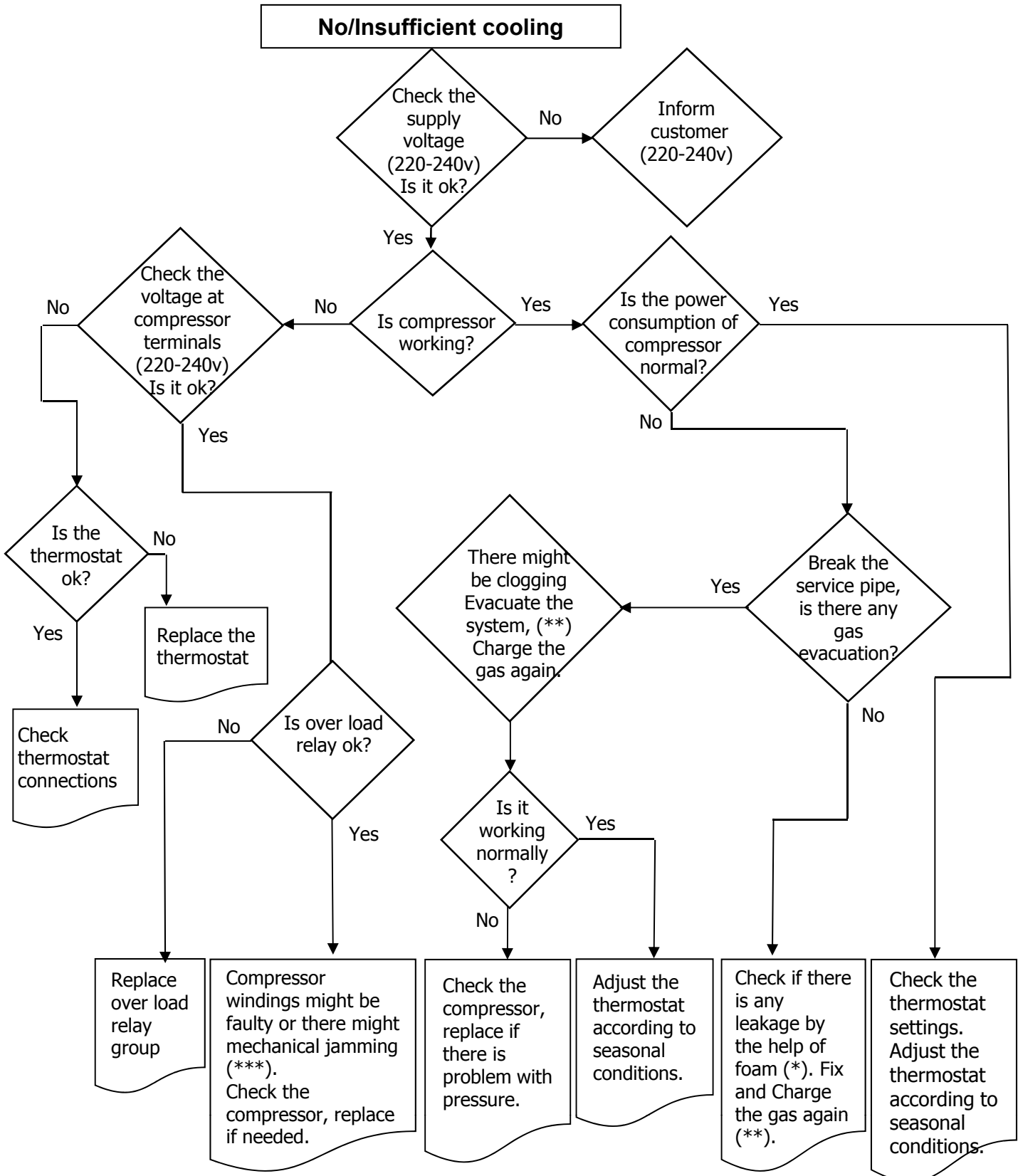


### **C - Thermostat Knob**

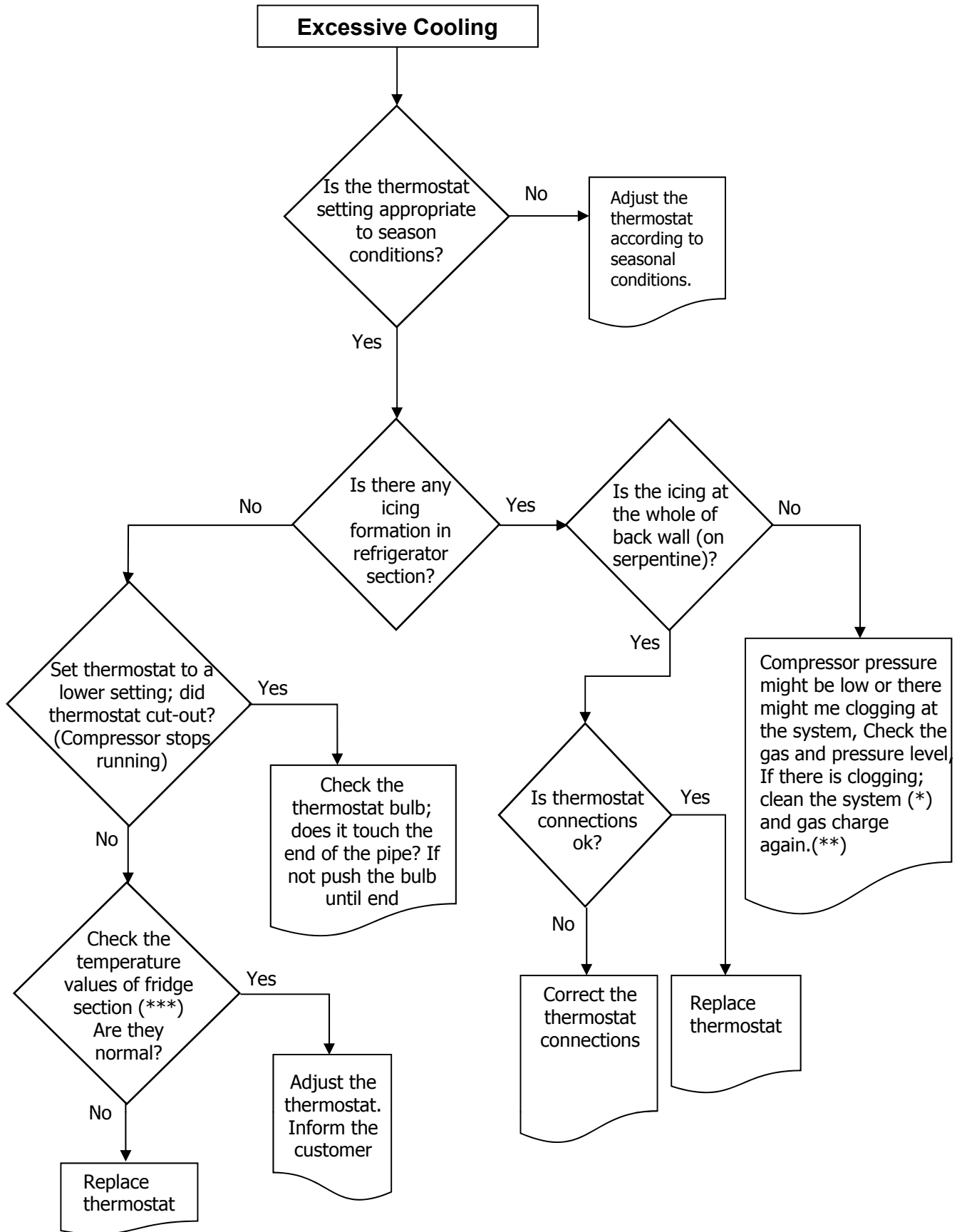
- This knob is used to control the temperature of the freezer and refrigerator parts automatically. It can be set to any value between “0” and “5” positions.
- “0” position indicates that the thermostat is “off”. The refrigerator is “off” on this setting.
- By turning the knob between “1” and “5”, you can increase or decrease the cooling degree.
- The refrigerator is designed to get optimum performance when the thermostat knob is set between position “2” to “4”.

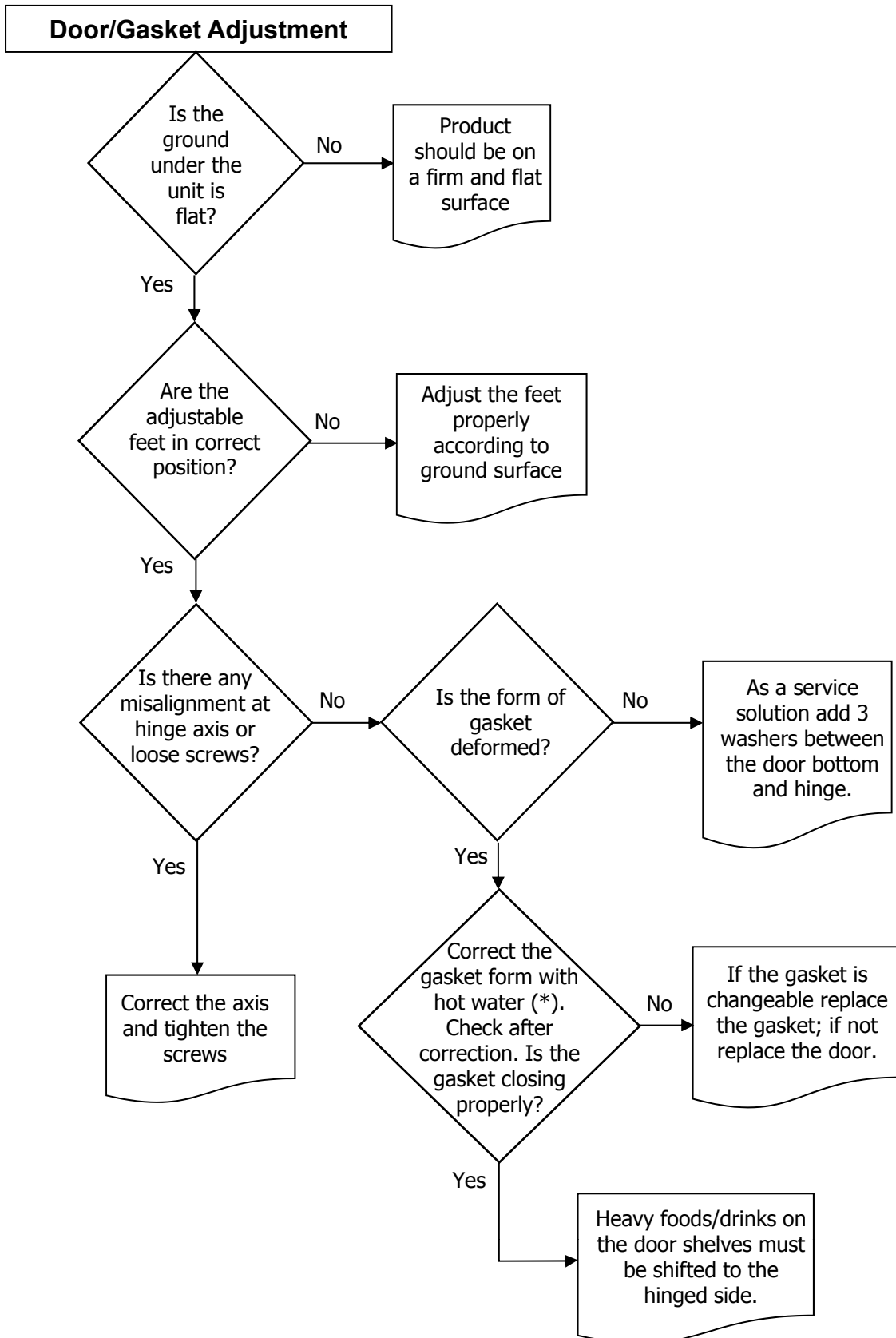
 <b>WHITE GOODS</b>	<b>DOUBLE DOOR 345/400 TURBO</b>	<b>CUSTOMER SUPPORT</b>
	<b>REFRIGERANT CYCLE DIAGRAM</b>	



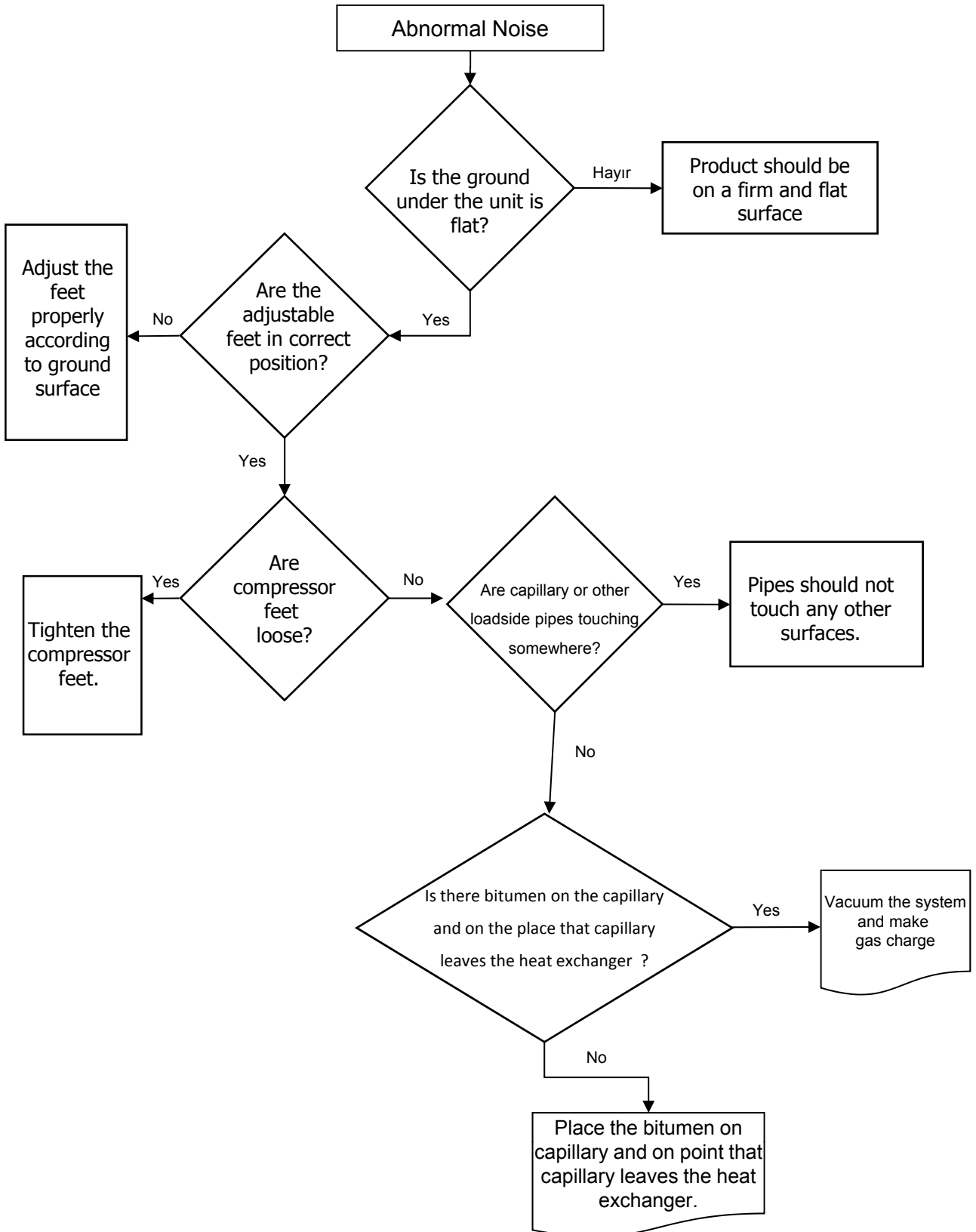



(\*) Check all pipes, tubes and welding points against gas leakage. (\*\*) Before charging gas to system, change dryer and vacuum at least 30 minutes, then charge the system with amount written on label (\*\*\*) Compressor primary winding should be around 10 Ω and secondary around 15 Ω (at 25°C ambience temp.)





(\*). Correct the gasket form by the help of hot water and hair dryer.



 <b>WHITE GOODS</b>	<b>DOUBLE DOOR 345/400 TURBO</b>	<b>CUSTOMER SUPPORT</b>
	<b>ASSEMBLE &amp; DISASSEMBLE</b>	

**Turbo Fan Assemble & Disassemble**

1- First assemble the motor to the body with screws. Then, connect the sockets. (Fig-1) If the socket is connected first there is a risk as motor may fall by its own weight. (Fig-2)



Figure-1

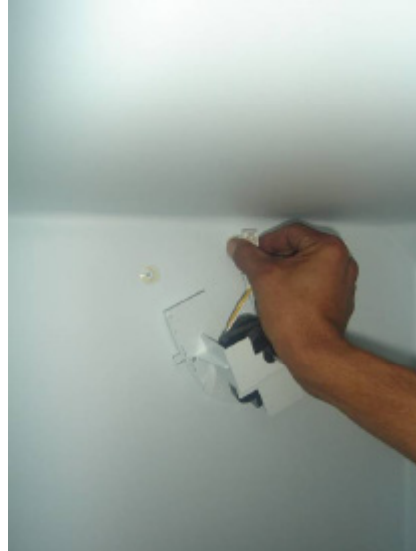


Figure-2

2- After screwing the motor, press to the motor up and down by your hand to check if it placed right on the gaskets. (Fig-3)



Figure-3


3- Press the fan propeller till you feel the motor shaft by your hand while assembling the motor. (Fic-4 - Fig-5)



Figure-4



Figure-5

 <b>WHITE GOODS</b>	<b>DOUBLE DOOR 345/400 TURBO</b>	<b>CUSTOMER SUPPORT</b>
	<b>ASSEMBLE &amp; DISASSEMBLE</b>	

4- Check if the propeller rotates freely without any problem. (Fig-6)



Figure-6

5- One of the tabs is placed in its housing and the outside body is bent as shown below to place the other tab in its slot. (Fig-7)

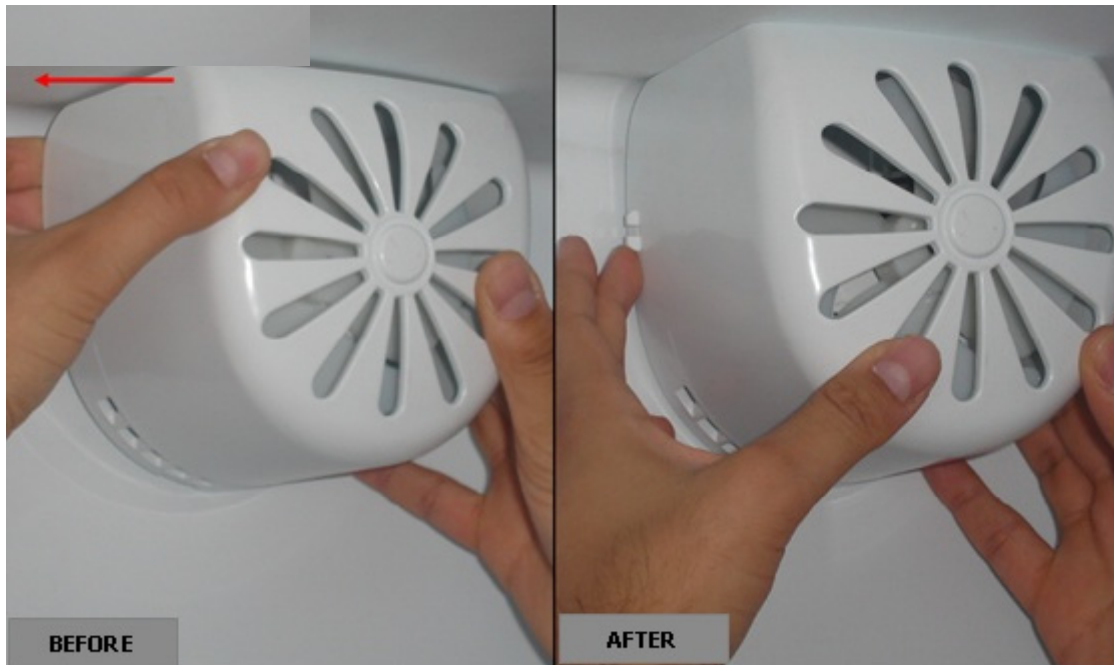



Figure-7



 <b>WHITE GOODS</b>	<b>DOUBLE DOOR 345/400 TURBO</b>	<b>CUSTOMER SUPPORT</b>
	<b>ASSEMBLE &amp; DISASSEMBLE</b>	

6- Finally check if the body is placed right by your hand as shown below. (Fig-8)  
 The turbo fan assembly is complete (Fig-9)

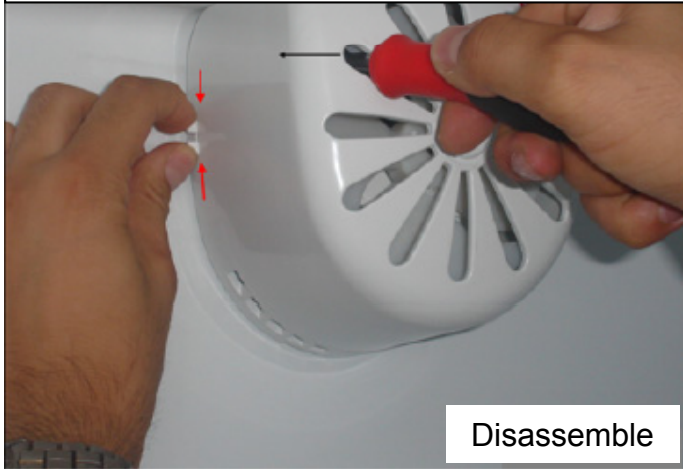


Figure-8



Figure-9

While disassemble, press the tabs in the directions shown and push the cover in the direction (black arrow) by using a screw driver from inside.



Disassemble

After the tabs are free from its slot, bend the cover to remove the remaining tabs.



Disassemble