

1- Enables the setting value of Cooler to be modified and Super Cool Mode to be activated if desired. Cooler may be set to 8, 6, 5, 4, 2 °C, SC.

2- Enables the setting value of Freezer to be modified and Super Freeze Mode to be activated if desired. Freezer may be set to -16, -18, -20, -22, -24 °C, SF.

3- Enables the modes (Economy, Holiday...) to be activated if desired.

4- Child Lock and Sound Alarm Off Button.

5- Cooler Set Value Screen.

6- Super Cool Indicator.

7- Holiday Mode Symbol.

8- Low Voltage Warning Symbol.

9- Drink Cool Mode Time Value Screen.

10- Freezer Set Value Screen.

11- Super Freeze Indicator

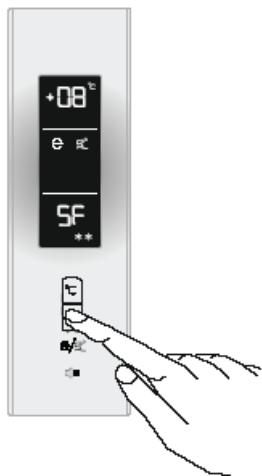
12- Alarm Symbol

13- Economy Mode Symbol

14- Demo Mode Symbol

15- Child-Lock Symbol

Super Freeze Mode



- Press Freezer Set Button until SF letters appears on the screen. The buzzer will sound to tell you the mode is set.
- Freezer temperature segment will show "SF".
- When using this mode it is possible to adjust the Cooler and Super Cool functions. Note the Super Freeze mode will continue to work.
- However, Economy and Holiday functions can not be selected.
- Use the same operation to cancel the Super Freeze function.

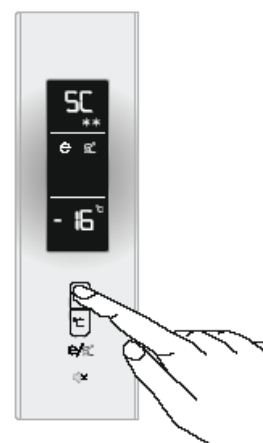
Note:

- Refer to the rating label to view the maximum freezer capacity (Kg) for a 24 hour period.
 - At maximum capacity it is best to set the appliance to Super Freeze mode 3 hours before storing foodstuffs.
 - An audible alarm will sound when optimum freezer temperature is met.
- Super Freeze mode will be automatically be cancelled after 24 hours, or when freezer sensor temperature drops beneath -32 °C.*

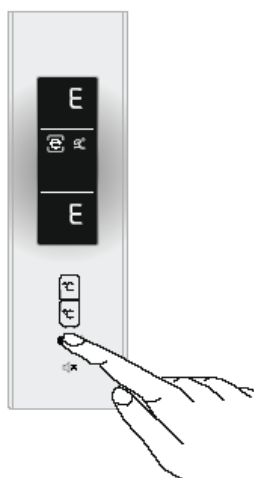
Super Cool Mode

- Press Cooler Set button until SC letters appear on the screen. The buzzer will sound to tell you the mode is set.
- Cooler temperature segment will show "SC".
- The temperature of the Freezer and Super Freeze mode may be adjusted. Note the Super Cool mode will continue to work.
- Economy and Holiday modes can not be selected.
- Use the same operation to cancel the Super Cool function.

Note: *Super Cool mode will be automatically cancelled after 4 or 6 hours depending on the environmental temperature or when the refrigerator sensor reaches a sufficiently low temperature.*



Economy Mode

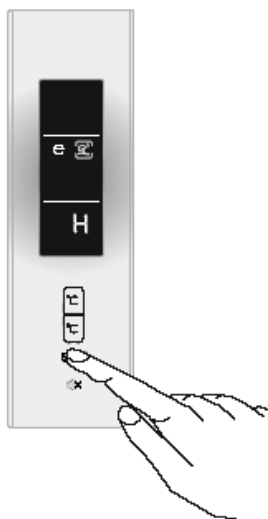


- Push "Mode button" until a circle appears around the economy symbol.
- After 1 second the mode will be set, the circle will blink 3 times and an audible buzzer will sound.
- Freezer and Refrigerator temperature segments will show "E".
- Both the circle and E symbol will be visible until the mode is finished.

During this mode;

- Freezer may be adjusted. When Economy mode is cancelled the selected setting will continue.
- The cooler may be adjusted. When Economy mode is cancelled the selected setting values will continue.
- The Super Cool and the Super Freeze modes can be selected. Economy mode is automatically cancelled and the selected mode is activated.
- Holiday mode can be selected after cancelling the Economy mode. Then the selected mode is activated.
- To cancel, you will just need to press on Mode button.

Holiday Mode



- Push the Mode button until a circle appears around the holiday symbol.
- After 1 second the mode will be set, the circle will blink 3 times and an audible buzzer will sound.
- The freezer temperature segment will show "H".
- Circle of the plane symbol and the H will light till the mode finishes.

During this mode;

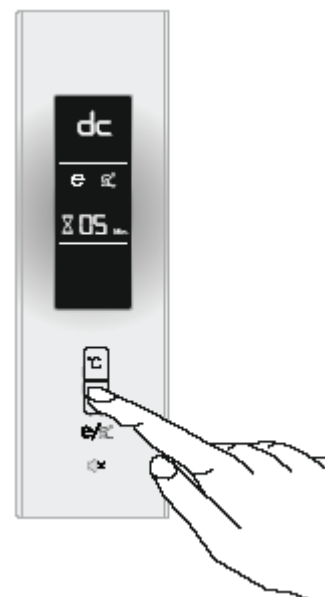
- The freezer may be adjusted. When holiday mode is cancelled the selected setting values will proceed.
- The cooler may be adjusted. When holiday mode is cancelled the selected setting values will proceed.
- Super Cool and Super Freeze modes can be selected. In this instance holiday mode is automatically cancelled and the selected mode is activated.
- Economy mode can be selected after cancelling the holiday mode. Then the selected mode is activated.
- To cancel just press the Mode button.

• Holiday mode should be activated when the cooler is not used for a long period of time. By doing this you will be using your fridge in a more economic manner. The cooler must be completely emptied before holiday mode is activated.

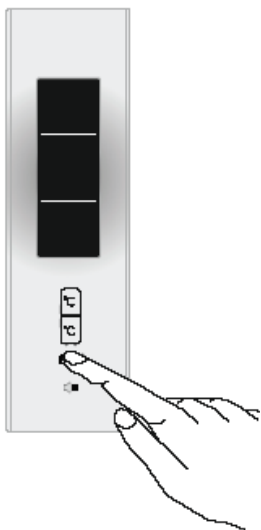
Drink Cool Mode

This mode is used to cool drinks within a set time.

- Press Freezer Set button for 5 seconds.
- dc letters will be seen on the cooler screen and the 05 blinks on D.Cool mode screen.
- Press the cooler button to adjust the time (05 - 10 - 15 - 20 - 25 - 30 minutes).
- When you select the time the numbers will blink 3 times on screen and audible buzzer will sound.
- The time will set after 2 seconds.
- The countdown starts from the adjusted time minute by minute.
- To cancel this mode press the freezer set button for 5 seconds.
- If the temperature of your bottles are not cool enough after the set time you can extend by 5 or 10 minutes. Cooling is insufficient, you might set another 5 or 10 minutes.
- You must check the temperature of the bottles regularly. When the bottles are cool enough, you must take them out of the appliance.
- If you forget to remove the bottles when using this mode it is possible they may explode.



Screen Saver Mode



How to use?

- This mode will be activated when you press on the Mode button for 3 seconds.
- If you press any button when the lights of the control panel are off the current settings will appear on the screen. If you neither cancel screen saver mode nor press on any button in 5 seconds, the control panel will go off again.
- To cancel screen saver mode press on the Mode button for 3 seconds again.
- When Screen Saver mode is active you can also activate the Child Lock.
- If you do not press any buttons for 5 seconds after activating the Child Lock the lights on the control panel will go off. You can the view the previous settings and see that child lock symbol is active when you pres any button.

Child Lock

To prevent children from playing with the buttons and changing the settings you can activate the Child Lock.

Activating Child Lock

Press on the Child lock button continuously for 5 seconds.

Deactivating Child Lock

Press on the Child lock button continuously for 5 seconds.

Note: The Child Lock will also be deactivated if the electricity supply is interrupted or the fridge is unplugged.



Demo Mode

Entering Demo mode:

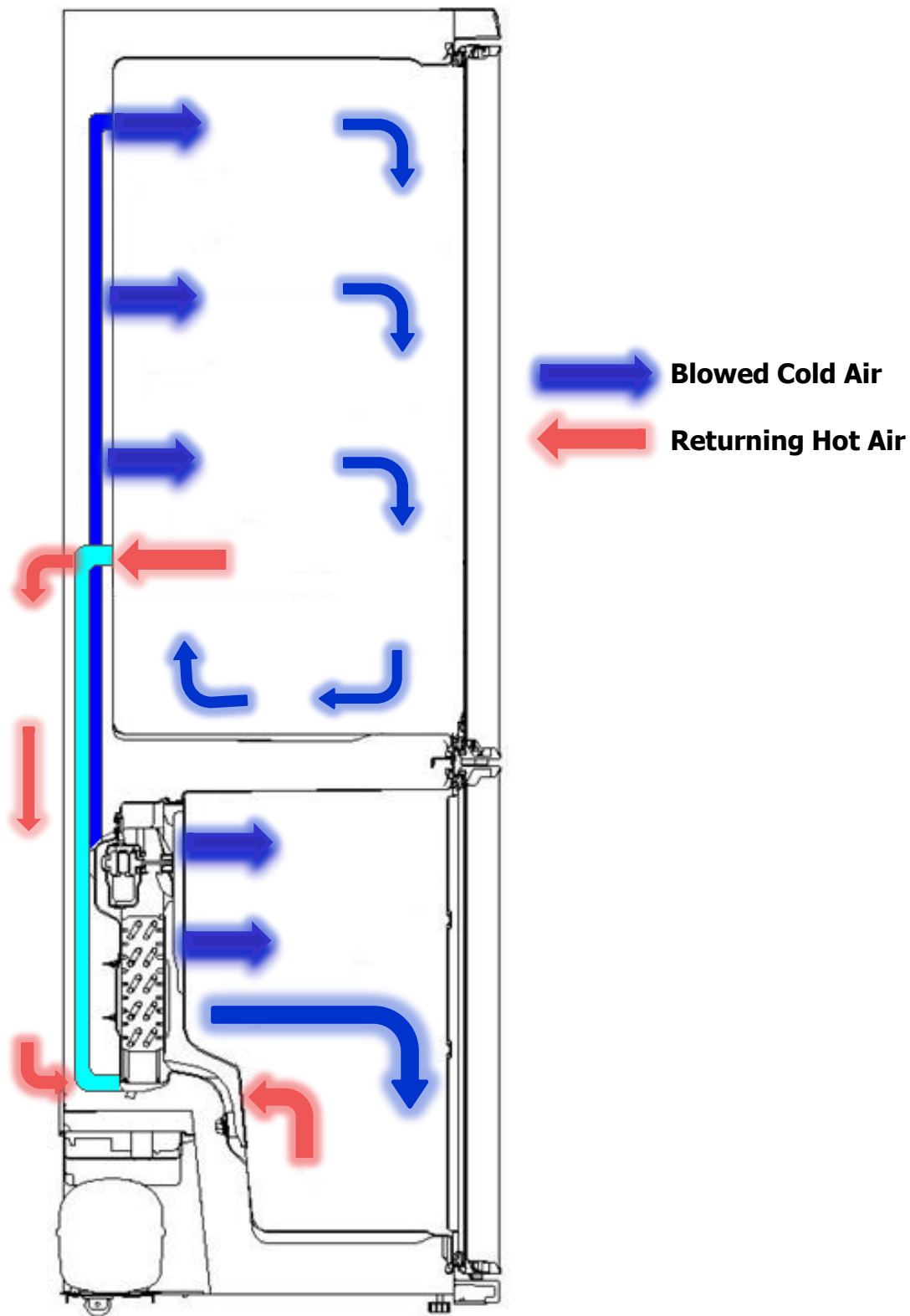
- Firstly the power is on , secondly within 1 minute user will push mode & freezer button at the same time , Then appliance will go on “demo function” and Demo Symbol will light during the mode.
- All functions can be adjusted to show how they are adjusted to the customer.
- During the demo mode to show the alarm symbol , at the 3th. pushing of the mode button SR alarm symbol and the “SR word” on the 7-segment will be active.

Canceling Demo mode:

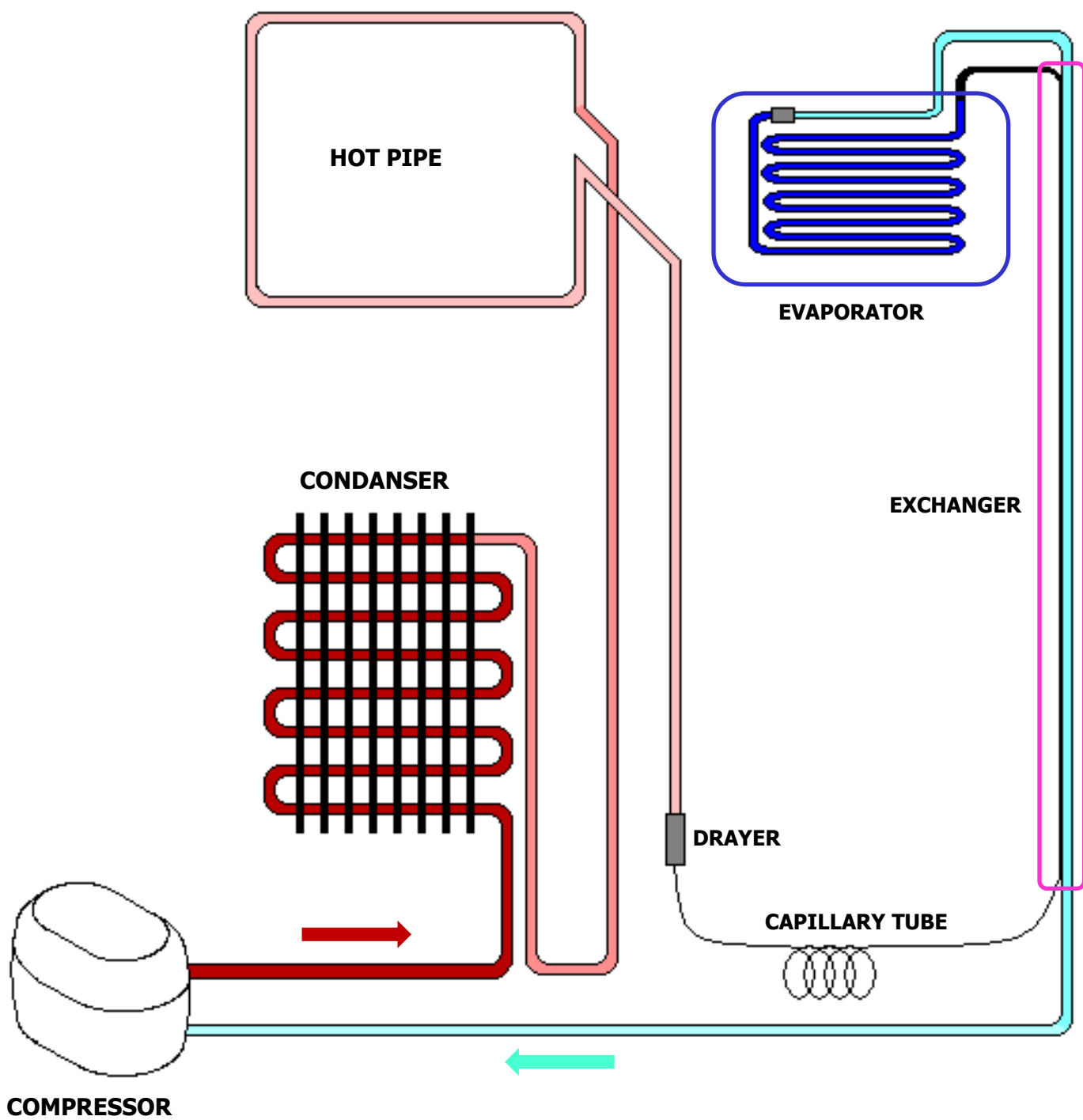
For cancelling; Same operation will be used. If user will push mode & freezer button at the same time, demo function will be cancelled.

When appliance is Demo mode; if plug is removed or there is an electricty breakdown; demo mode will continue with current settings after user plug into or electricity breakdown finish.

VESTEL WHITE GOODS	NF COMBI 3663E / 3863E - BLANCA	CUSTOMER SUPPORT
	FLOW OF AIR	



VESTEL WHITE GOODS	NF COMBI 3663E / 3863E - BLANCA	CUSTOMER SUPPORT
	REFRIGERANT CYCLE DIAGRAM	



VESTEL WHITE GOODS	NF COMBI 3663E / 3863E - BLANCA	CUSTOMER SUPPORT
	SPECIAL PROGRAMS	

Low voltage function

Freezer number segment shows LO, Refrigerator number segment shows PO, buzzer sounds.

*** Freezer sensor open short circuit**

Blink Sr Symbol, buzzer sounds.

*** Refrigerator sensor open short circuit**

Blink Sr Symbol, buzzer sounds.

*** Defrost sensor open short circuit**

Blink Sr Symbol, buzzer sounds.

*** Ambient sensor open short circuit**

Blink Sr Symbol, buzzer sounds.

*** Compressor defect**

Blink Sr Symbol, buzzer sounds.

*** Defrost heater defect**

Blink Sr Symbol, buzzer sounds.

*** Door open alarm**

Door alarm sounds when the door opens more than 2 minutes continuously.

VESTEL WHITE GOODS	NF COMBI 3663E / 3863E - BLANCA	CUSTOMER SUPPORT
	SERVICE MODE	

Entering service mode:

Push FRE button continuously. During this time, open and close refrigerator door for 3 times. Appliance will enter service mode 3 sec. later.

Canceling service mode:

Push FRE button continuously. During this time, open and close refrigerator door for 3 times. Appliance will cancel service mode 3 sec. later.

If service man do not push any buttons for 30 minutes when appliance is in service mode. Service mode will be canceled automatically.
Service mode will be used only by professionals.

During service mode:

- Buzzer will sound beep for 0.1 sec. each 5 sec. during service mode.
- Number segment will show error codes (service mode reaction). Symbols will be OFF. Child Lock symbol will blink during service mode.
If there is no error , display will show nothing. And if error is disabled during service mode, error codes will be disabled. (LEFT Value screen will show Letters, RIGHT Value screen will show numbers)
- If service man pushes mode button he will be able to choose functions listed below. Number segments will not show errors as functions are working.
Functions will be set if service man does not push any other button for 1 sec.
- Service man has 4 functions to select. First 4 push of Mode button will activate symbols. Service man will cancel mode selection if he stops pushing button on the 5th push.

1. Push Starting program

Economy symbol in display will blink during mode.

Freezer Set value screen will light as related components' number which has recieved from mainboard.(5 seconds for each component)

As starting program finishes, first symbol will be OFF. Appliance will return to initial service mode reaction.

2. Push Forced defrost and forced canceling of defrost

Holiday symbol will blink during mode. Defrosting mode will start from Step 3. Mode can be canceled manually or automatically.

Manual canceling will be done by pushing REF button. Symbol will be OFF if defrost is canceled manually. Appliance will return to initial Service mode reaction.

If manual canceling of this function is not performed in 30 min. Service mode will be canceled. Appliance will check if defrost is finished in this 30min. If YES, appliance will go on from previous set values. But if defrost is not finished , appliance will go on defrost till it finishes and then go on from previous set values .

VESTEL WHITE GOODS	NF COMBI 3663E / 3863E - BLANCA	CUSTOMER SUPPORT
	SERVICE MODE	

3. Push Forced opening and closing of damper motor

11A and 11B will light alternately like S.Freeze during mode.
As function is selected damper will be opened if it was closed; it will close if it was opened.
If service man does not reset the function, damper will return to initial condition (open or close) after 5 min. Appliance will return to initial service mode reaction
Manual canceling will be done by pushing REF button. Symbol will be OFF as damper motor return to initial condition. Appliance will return to initial service mode reaction

4. Push Displaying actual temperatures in compartments

6A and 6B will light alternately like S.Cool during mode.
Freezer number segment will show F and refrigerator number segment will show F sensor actual temp.
If service man pushes FRE button;
Freezer number segment will show R and refrigerator number segment will show R sensor actual temp.
If service man pushes FRE button again;
Freezer number segment will show D and refrigerator number segment will show D sensor actual temp.
If service man does not push FRE button in 5 min, mode will be canceled. Appliance will return to initial service mode reaction

If service man pushes REF button again, function will be canceled.
Appliance will return to initial service mode reaction

5. Push Empty. No function is set

VESTEL WHITE GOODS	NF COMBI 3663E / 3863E - BLANCA	CUSTOMER SUPPORT
	USER AND SERVICE MODE ERROR MESSAGES	

Sensor short open circuit defect on display

SENSOR	TEMPERATURE	USER MODE REACTION	SERVICE MODE REACTION
(1) Freezer	> +50 °C or <-50 °C (sensor is short or open)	Display SR (blinks) in Freezer number segment, SR Symbol blinks And Set refrigerator segment OFF till error is finished. Buzzer sounds.	Display FE 01
(2) Refrigerator	> +50 °C veya <-50 °C (sensor is short or open)		Display FE 02
(3) Defrost	Short (< 100 Ω) or <-50 °C		Display FE 03
(4) AT sensor	Short or < -30 °C		Display FE 04
Breakdown of (1) and (2)			Display FF 12
Breakdown of (1) and (3)			Display FF 13
Breakdown of (1) and (4)			Display FF 14
Breakdown of (2) and (3)			Display FF 23
Breakdown of (2) and (4)			Display FF 24
Breakdown of (3) and (4)			Display FF 34
Breakdown of (2) and (3) and (4)			Display FH 01
Breakdown of (1) and (3) and (4)			Display FH 02
Breakdown of (1) and (2) and (4)			Display FH 03
Breakdown of (1) and (2) and (3)			Display FH 04
Breakdown of all sensors			Display FU 00

Component defect on display

DEFECT TYPE	DETAILS	USER MODE REACTION	SERVICE MODE REACTION
Compressor Defect	Defrost sensor temp > -10°C (D sensor temp.unchanges for 10 min.continuous compressor run)	Display SR& SR Symbol (blinks) in freezer number segment and set refrigerator segment OFF till error is finished. Buzzer sounds.	Display FO 05
Defrost Heater Defect	Defrost sensor < 0°C		Display FO 06

VESTEL WHITE GOODS	NF COMBI 3663E / 3863E - BLANCA	CUSTOMER SUPPORT
	USER AND SERVICE MODE ERROR MESSAGES	

Low voltage error on display

DEFECT TYPE	DETAILS	USER MODE REACTION	SERVICE MODE REACTION
Low voltage	Power supply < 170	Freezer number segment shows LO Refrigerator number segment PO Buzzer sounds.	Display LO PO

Cooling error on display

NOTE:To prevent the wrong alarms, this alarm status is disabled on following conditions:

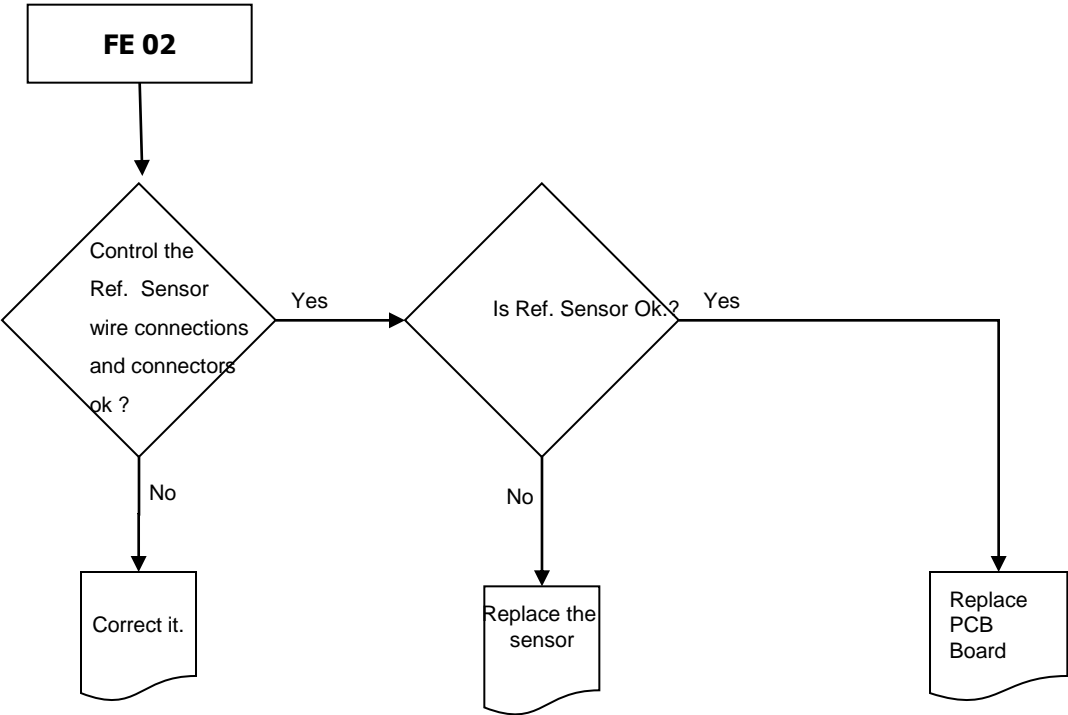
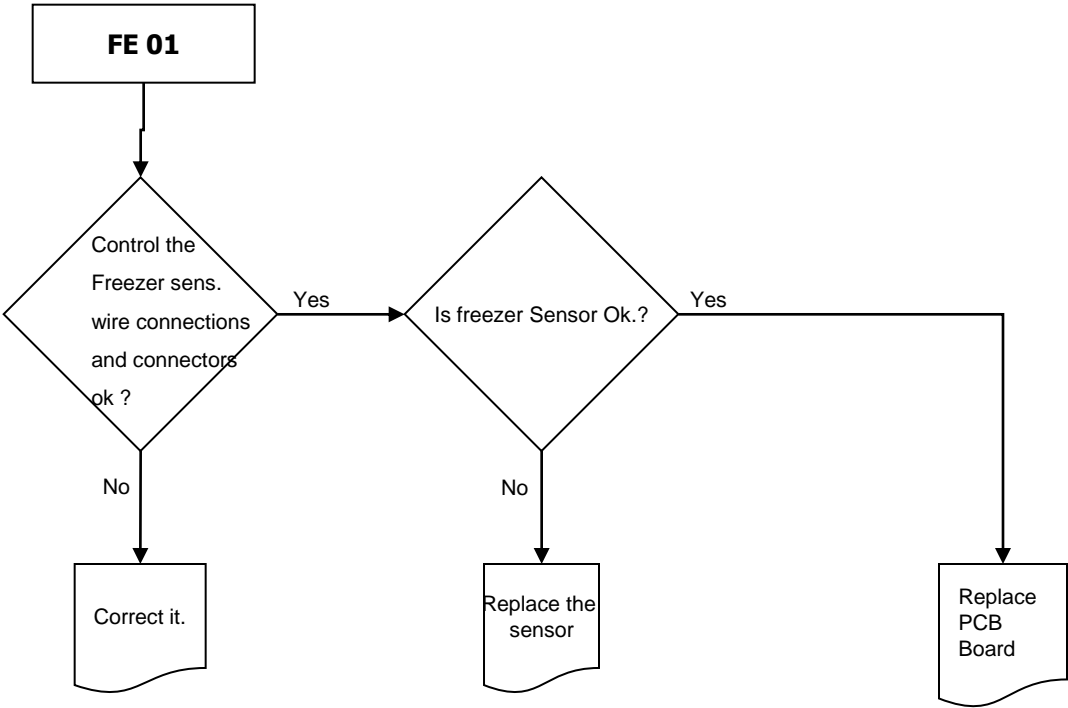
- During the first 6 hours after the product was firstly connected.
- During the defrost period
- During the first two hours after a defrost
- During the first 2 hours that one of the doors was open.

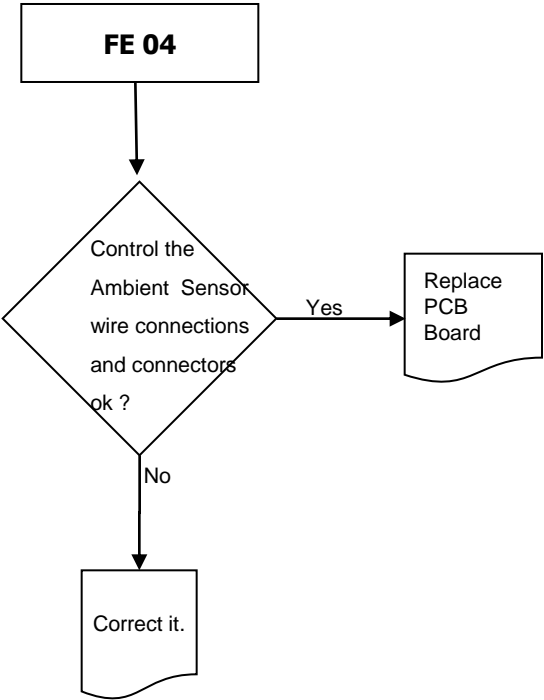
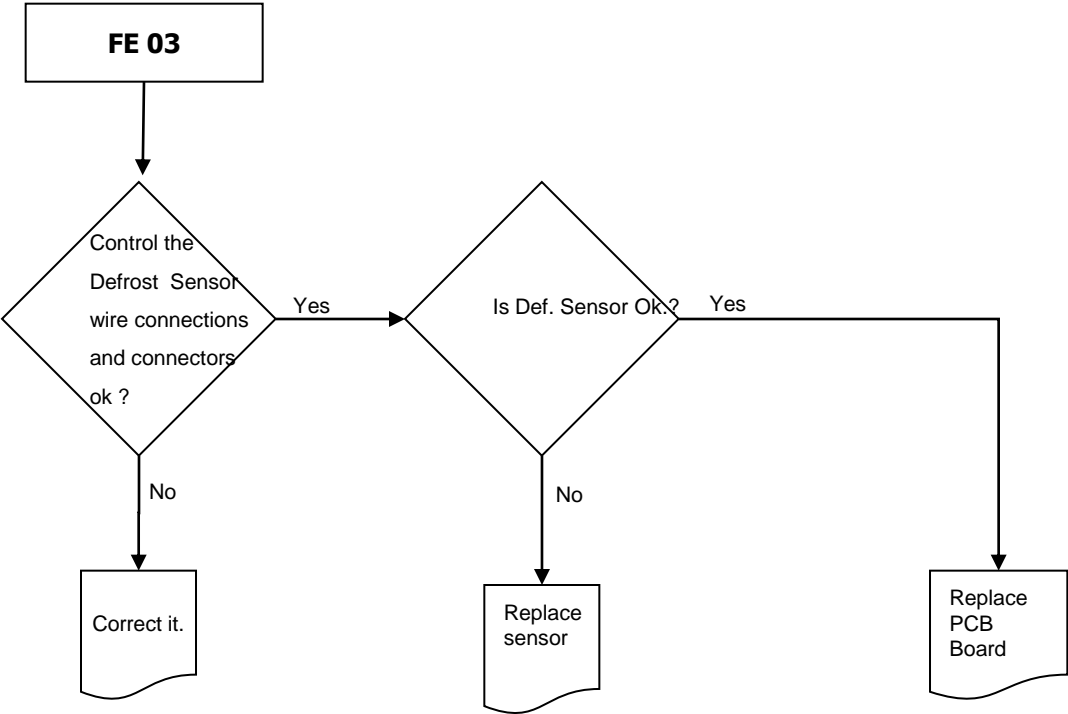
DEFECT TYPE	DETAILS	USER MODE REACTION	SERVICE MODE REACTION
Freezer sensor > -10°C	Freezer compartment is not cool enough	Freezer number segment LF shown till error finishes	Display CO 01
Ref. sensor > +10°C and if Holiday mode is not active	Refrigerator compartment is warm	Refrigerator number segment LC shown till error finishes	Display CO 02
Ref. sensor < -5°C	Refrigerator compartment is so cool	Refrigerator number segment HC shown till error finishes	Display CO 03
F sensor > -10°C and R sensor >15°C and if Holiday mode is not active	Freezer and Refrigerator compartment both are not cool enough	Freezer number segment LF shown and Ref. number segment LC shown	Display CO 04

VESTEL WHITE GOODS	NF COMBI 3663E / 3863E - BLANCA	CUSTOMER SUPPORT
	USER AND SERVICE MODE ERROR MESSAGES	

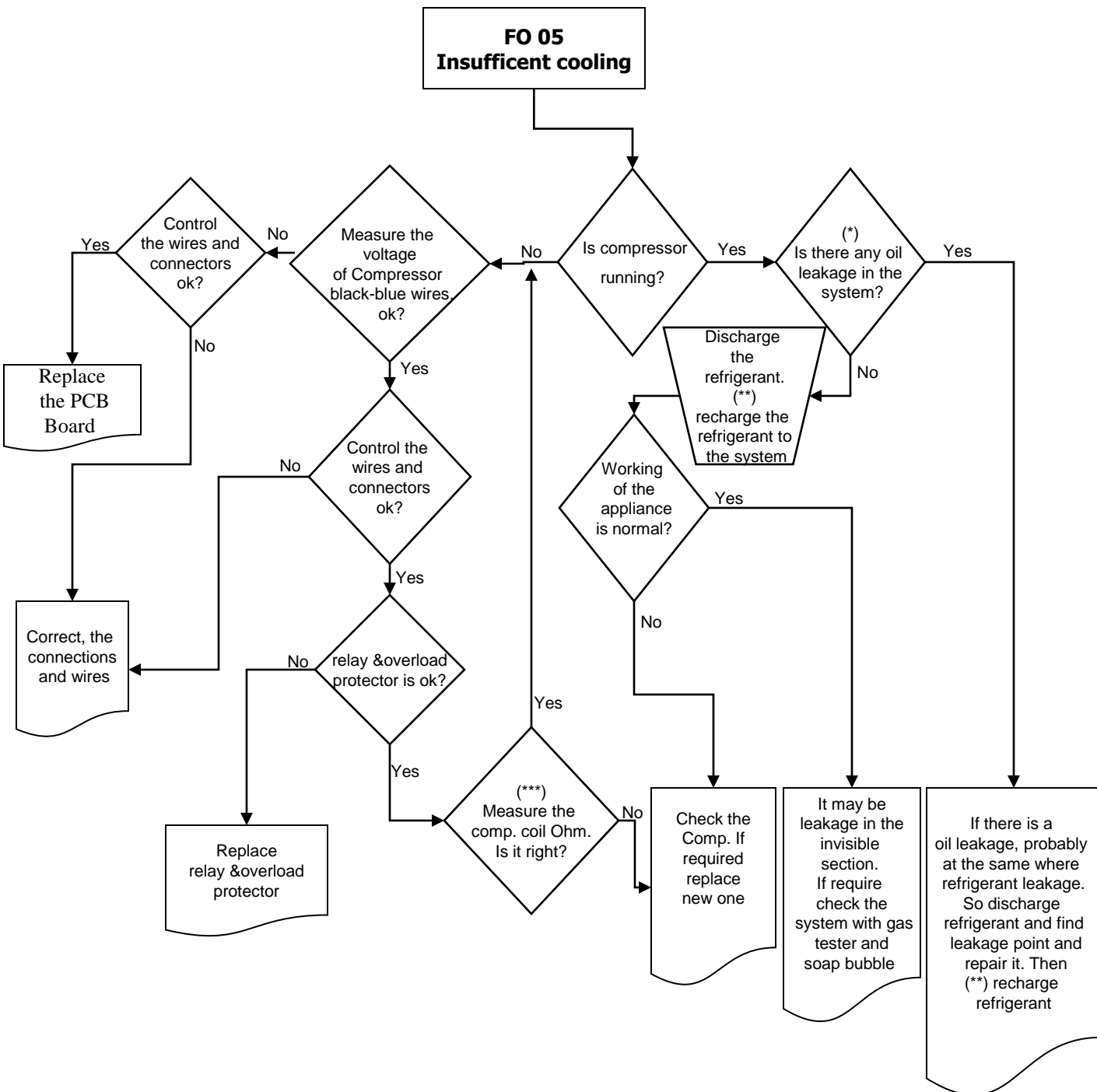
PRIORITY OF ERROR ON DISPLAY

	USER MODE REACTION	SERVICE MODE REACTION
Compressor Defect	SR	FO 05
Defrost Heater Defect	SR	FO 06
Sensor Defect (Short-Open)	SR	F* **
F sensor>-10°C and R sensor>15°C	LF and LC	CO 04
F sensor>-10°C	LF	CO 01
R sensor>15°C	LC	CO 02
R sensor<-5°C	HC	CO 03





**FO 05
Insufficient cooling**



(*) Check all of the visible pipes and welding points against oil leakage

(**) Before recharging the refrigerant to the system; Dryer must be replaced and at least 30 minutes vacuum must be done

(***) Comp. Main coil and auxiliary coil are 10 Ω and 22 Ω respectively (At 25 $^{\circ}\text{C}$ ambient temp.)

1. Unscrew the screw fixing the top hinge cover and remove it. (Fig-1)



Figure-1

2. Disconnect the display connector. Unscrew the two screws fixing the top hinge and remove it. (Fig-2)



Figure-2

3. Remove the refrigerator door. (Fig-3)



Figure-3

4. Unscrew the two screws which are fixing the middle hinge. (Fig-4)



Figure-4

5. Remove the freezer door. (Fig-5)



Figure-5

6. Unscrew the bottom hinge fixing screws and remove it. (Fig-6)



Figure-6

7. Unscrew the stationary foot of bottom hinge and screw to **Hole-1**. Unscrew the hinge pin and screw to **Hole-2**.(Fig-7)

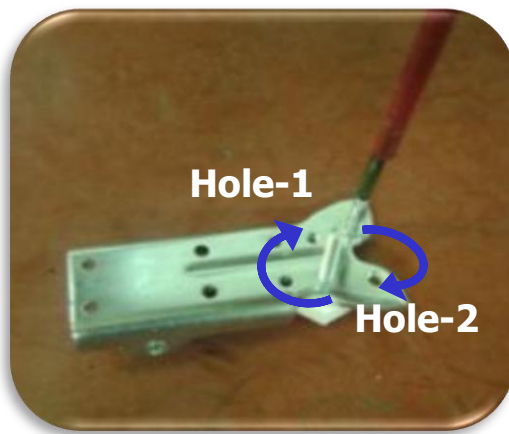


Figure-7

8. Unscrew the stationary foot and front wheel (Fig-8.1) and screw to the right side. (Fig-8.2)



Figure-8.1

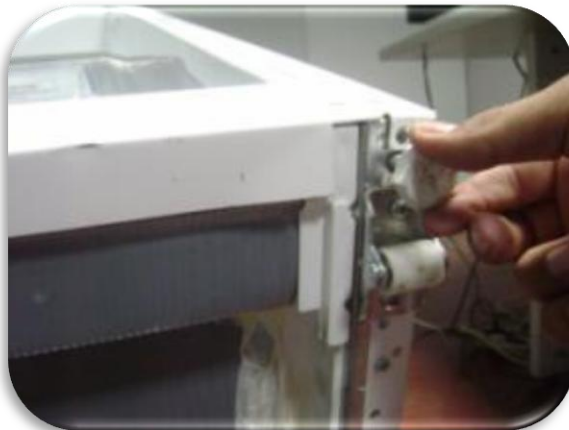


Figure-8.2

9. Unscrew the side panel support screw (Fig-9.1) and screw the bottom hinge to the left side . (Fig-9.2)

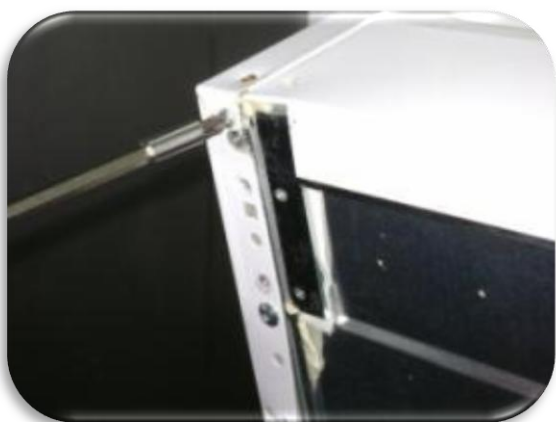


Figure-9.1



Figure-9.2

10. Remove the middle hinge cover on the left. (Fig-10.1) and insert the middle hinge cover to the right side. (Fig-10.2)

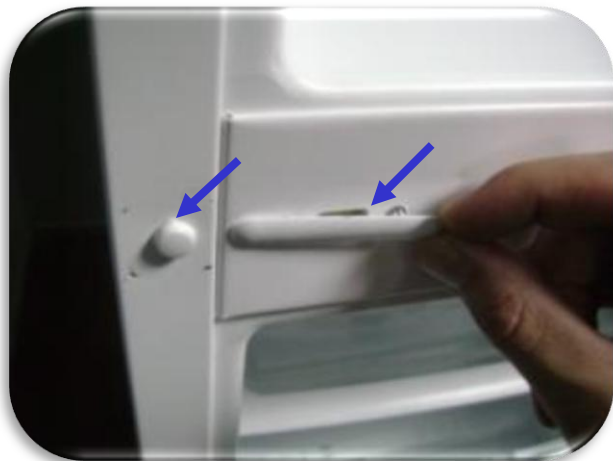


Figure-10.1

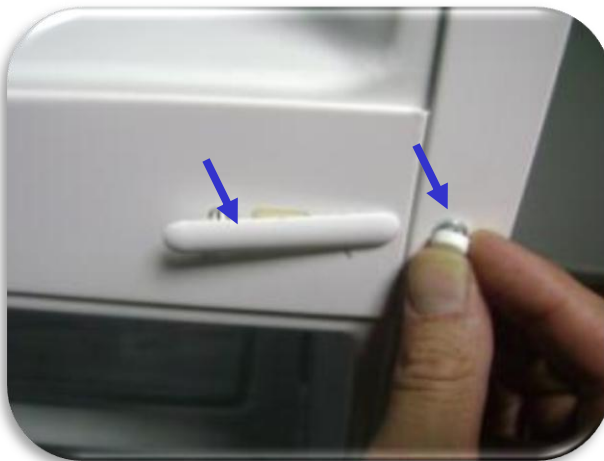


Figure-10.2

11. Replace the freezer door top bushing (Fig-11.1) and top bushing cap. (Fig-11.2)



Figure-11.1

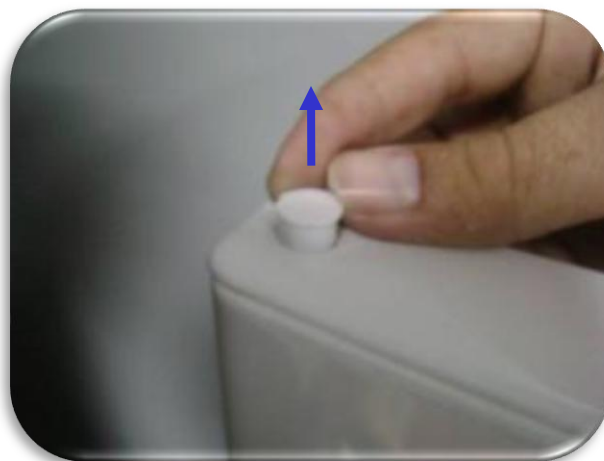


Figure-11.2

12. Remove the freezer door bottom bushing and bottom stopper and then insert them the left side. (Fig-12)



Figure-12

13. Remove the freezer door right catcher (Fig-13.1) and assemble the left catcher to the left. (Fig-13.2)
(You can find the left door catcher in the user manual bag)



Figure-13.1



Figure-13.2

14. Remove the socket cover-left of the freezer door (Fig-14.1) and assemble the socket cover-right to the right. (Fig-14.2) (You can find the right socket cover in the user manual bag)



Figure-14.1



Figure-14.2

15. Assemble the freezer door. Turn the middle hinge by 180°. Fix the middle hinge by tightening the screws. (Fig-15.1) Assemble the refrigerator door. (Fig-15.2)



Figure-15.1



Figure-15.2

VESTEL WHITE GOODS	NF COMBI 3663E / 3863E - BLANCA	CUSTOMER SUPPORT
	CHANGING THE DOORWAY DIRECTION	

16. Remove the socket tape (Fig-16.1)and stick it on the right side. (Fig-16.2)



Figure-16.1



Figure-16.1

17- Unscrew the screw fixing the top hinge pin. Then fix left top hinge pin to left side of the top hinge. (Fig-17)
(You can find the left top hinge pin in the user manual bag)



Figure-17

18- Connect the display connector and screw the left top hinge. (Fig-18.1) and screw the hinge cover. (Fig-18.2)



Figure-18.1



Figure-18.1

Replacement of Freezer Multiflow Cover

1- Remove caps and unscrew the 4 screws shown at the picture. (Fig-1)



Figure-1

2- Then pull multiflow cover slightly from the bottom. (In case of icing between cover and evap, do not pull the cover with full force ,slightly shake the cover to brake the icing then pull.) (Fig-2)



Figure-2

3- After pulling the cover, flip it to the right side of the cabinet. (Fig-3)



Figure-3

4- Take out the damper motor cables from the hook. (Fig-4)



Figure-4

VESTEL WHITE GOODS	NF COMBI 3663E / 3863E - BLANCA	CUSTOMER SUPPORT
	Disassembly and Assembly Instructions	

5- Remove the sealing material (putty). (Fig-5)

Note: Keep sealing material for re-sealing the connectors after replacement.



Figure-5

6- Disconnect the damper motor connector from housing and remove the multiflow cover. (Fig-6 / Fig-7)

Note: Damper motor is assembled in the multiflow cover.

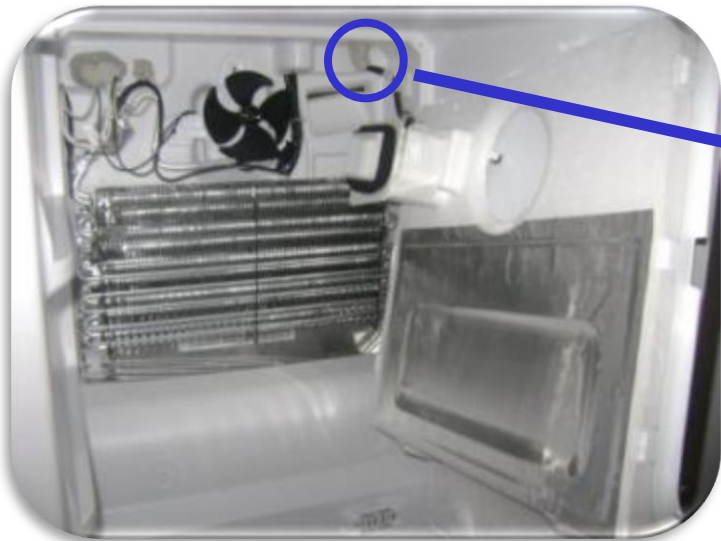


Figure-6



Figure-7

7- Attach the damper motor cables to the hook and make its connection. (Fig-8)



Figure-8

8- Reseal the connector with the sealing material (putty). (Fig-9)



Figure-9

9- Then push multiflow cover slightly to fit its place. (Fig-10)



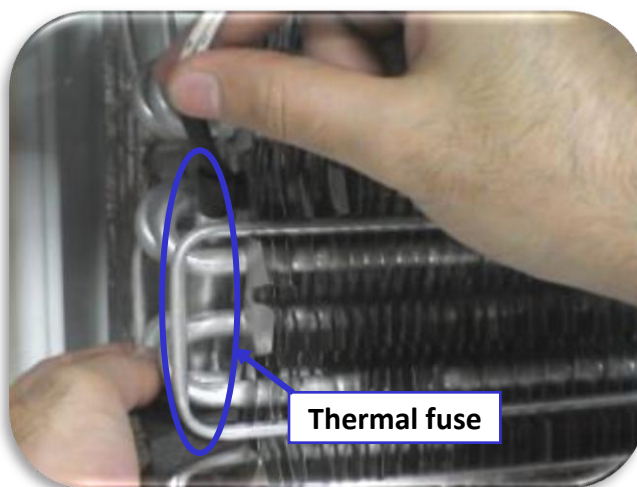
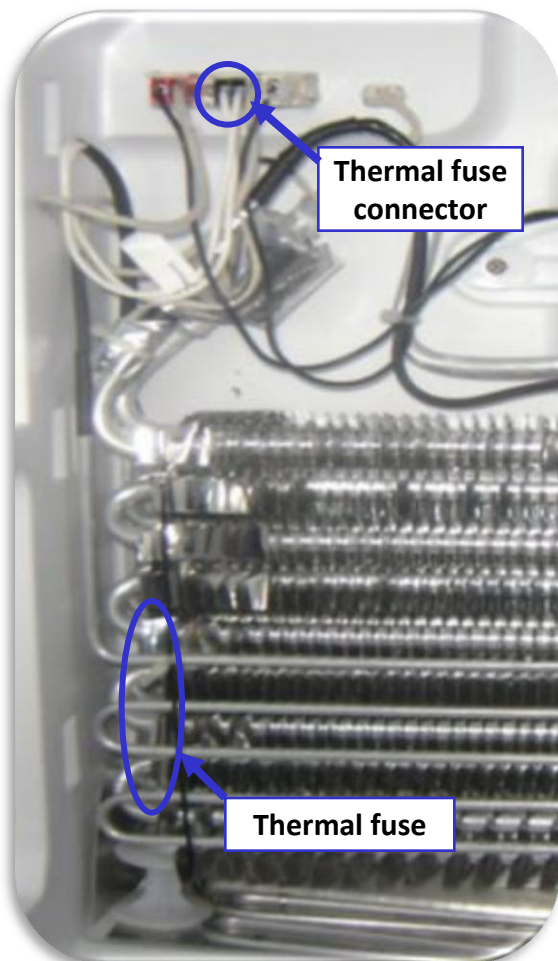
Figure-10

10- Screw and place the caps. (Fig-11)



Figure-11

Replacement of Thermal Fuse Assy.

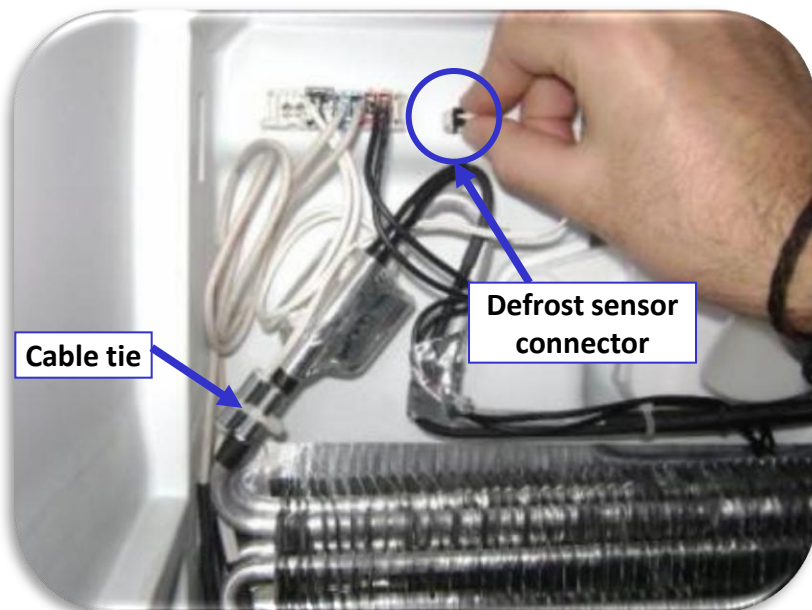


Disconnect thermal fuse connector.
(black connector)
Remove the thermal fuse by pulling it.
(mounted on the left side of the evaporator)
Take out the thermal fuse.

Note:

Be sure to replace both thermal fuse and defrost sensor ,in case that thermal fuse is blown.

Replacement of Defrost sensor



Cut the cable tie.
Disconnect to defrost sensor connector.
You can take out the defrost sensor
by removing the aluminum tape on it.

VESTEL WHITE GOODS	NF COMBI 3663E / 3863E - BLANCA	CUSTOMER SUPPORT
	Disassembly and Assembly Instructions	

Replacement of Freezer Sensor

Remove the freezer sensor cover by pulling forward and disconnect sensor connector.



Replacement the ice cube tray holders

1- Remove the ice cube trays. (Fig-1)



Figure-1

2- Unscrew the 4 screws fixing the holders. (Fig-2)



Figure-2

3- Take out the holders by pulling downwards. (Fig-3)



Figure-3