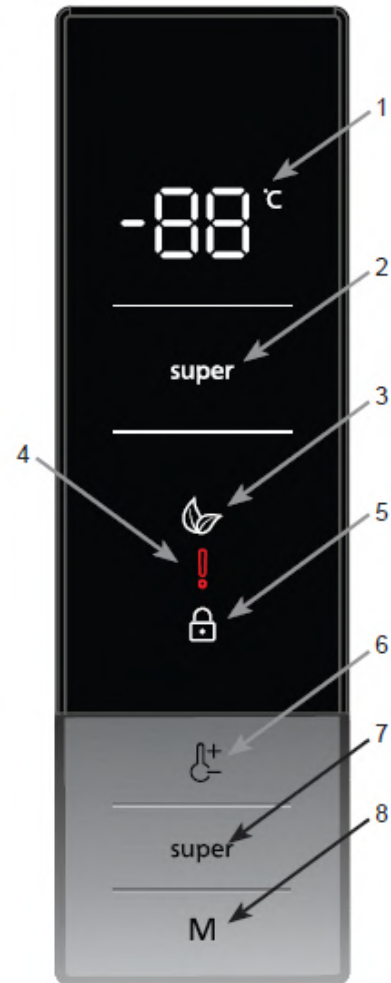




Display and control panel



Use of control panel

1. It is freezer set value screen.
2. It is super cooling indicator.
3. It is economy mode symbol.
4. It is alarm symbol
5. It is child-lock symbol.
6. It enables the setting value of cooler to be modified if desired.
Freezer maybe set to -24,-22,-20,-18,-16°C,
7. It enables the setting super freeze mode.
8. It enables the modes (economy and screen saver...) to be activated if desired.

	491E IMD DISPLAY	
	THE VARIOUS FUNCTIONS AND POSSIBILITIES	

Super Freeze Mode



Purpose

- To freeze a large quantity of food that cannot fit on the fast freeze shelf.
- To freeze prepared foods.
- To freeze fresh food quickly to retain freshness.

How Would It Be Used?

- Press the süper freeze mode button.
- If no button is pressed for 1 second, to activate the super freeze symbol. Buzzer will sound beep beep and mode will be set.
- When this mode is selected, the temperature value that was set before mode selection will be displayed on the freezer temperature indicator.

During This Mode:

- Economy mode cannot be selected.
 - You can press the freezer temperature setting button again or press the super button to deactivate super freeze mode.
- The maximum amount of fresh food (in kg) that can be frozen in 24 hours is indicated on the product label.
- For optimum performance that will reach the maximum capacity of freezer, set the efficient quick freeze mode 24 hours before placing the fresh food.
- Super freeze mode will automatically cancel after 54 hours.

Economy Mode



Purpose

Energy savings. During periods of less frequent use (door opening) or absence from home, such as a holiday, Eco program can provide optimum temperature whilst saving power.

How Would It Be Used?

- Press and hold the mode button until Economy mod symbol appears.
- If no button is pressed for 1 second, mode will be set. Eco symbol will blink 3 times. When mode is set, buzzer will sound beep beep.
- Freezer temperature segments will show "E".
- Economy symbol and E will light till mode finishes.

During This Mode:

- Economy mode can be cancelled by the same operation of selecting.
- Super freeze mode can be selected. In this case, economy mode will be cancelled automatically and the selected mode will be activated.



491E IMD DISPLAY

THE VARIOUS FUNCTIONS AND POSSIBILITIES



Screen Saver Mode



Purpose

This mode saves energy by switching off all control panel lighting when the panel is left inactive.

How to Use ?

- Screen saver mode will be activated automatically after 30 seconds.
- If you press any key while the lighting of the control panel is off, the current machine settings will reappear on the display to let you make any change you wish.
- If you do not cancel the screen saving mode or press any key for 30 seconds, control panel will remain off.

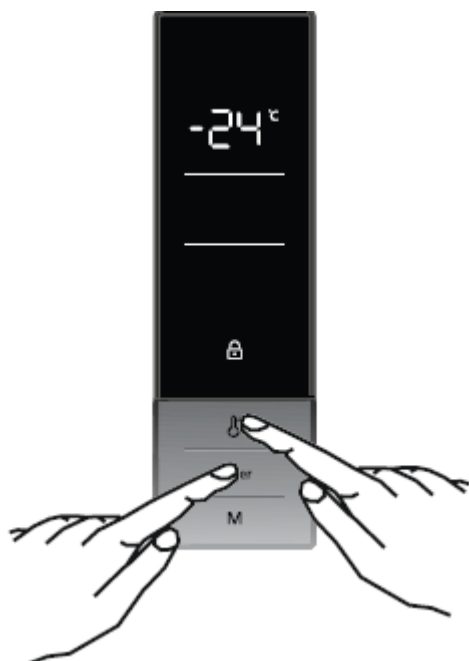
To deactivate the screen saving mode,

- To cancel the screen saving mode, first of all, you need to press any key to activate the keys and then press and hold the Mode button for 3 seconds.
- To reactivate screen saving mode, press and hold the mode button for 3 seconds.

Notes:

- When screen saver mode is active you can also activate child lock.
- If no button is pressed within 5 seconds after child lock is activated, the lights of the control panel will turn off. You can see latest status of settings or modes after you press any button. While control panel's light is on, you can cancel child lock as described in the instruction of this mode.

Activating the Child Lock



Purpose

Child lock can be activated to prevent any accidental or unintentional changes being made to the appliance settings.

Activating Child Lock

Press on super and freezer temperature setting buttons simultaneously for 5 seconds.

Deactivating Child Lock

Press on super and freezer temperature setting buttons simultaneously for 5 seconds.

Child lock will also be deactivated if electricity is interrupted or the fridge is unplugged.

Door Open Alarm Function

If cooler or freezer door is opened more than 2 minutes, appliance sounds 'beep beep'.

Demo Mode



This mode will be use for only sales points by salesman to show functions & modes to customer without operating components as a compressor, fan, motor..Etc.

Entering Demo mode:

Firstly the power is on, secondly within 1 minute user will push Mode and Freezer Set Button 3 seconds at the same time , Then appliance will go on “demo function” . «dE» will light on cooler set value screen for 1 second, and «on» will light for 1 second and off. Every 20 seconds this operations will occur.

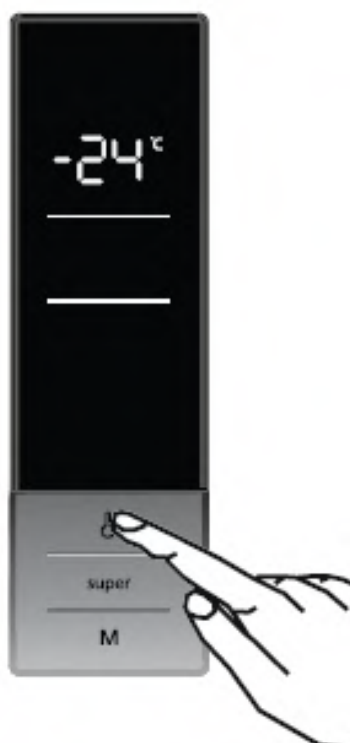
All functions can be adjusted to show how they are adjusted to the customer.

Canceling Demo mode:

For cancelling; Same operation will be used. If user will push Mode and Freezer Set Button at the same time, demo function will be cancelled.

When appliance is Demo mode; if plug is removed or there is an electricy breakdown; demo mode will continue with current settings after user plug into or electricity breakdown finish.

Freezer Temperature Settings



The initial temperature value for the freezer setting indicator is -18 °C.

- Press the set freezer temperature set button once.
- When you first push this button, the last set value will blink on the screen.
- Whenever you press this button, a lower temperature will be set (-16, -17, -18, -19, -20, -21, -22, -23 and -24 °C).
- If you continue to press it, it will restart from -16 °C.
- The temperature value selected before super freeze mode or economy mode is activated and will remain the same when the mode is over or cancelled. The appliance continues to operate with this temperature value.

	491E IMD DISPLAY		
	SERVICE MODE		

Entering Service Mode: Push and hold Super and Mode button together for 5 seconds.
When user enters to Service Mode,



Display Error Cdoes	
Freezer Sensor Short-Open	E 01
Defrost Sensor Short-Open	E 03
AT Sesnor Short-Open	E 04
Compressor Defect	E 06
Defrost Heater Defect	E 07
Low voltage (170 volt)	E 08
Low Feezing	E 09

1. Push of Mode Button;

This mode is starting mode and ‘Economy’ symbol in display will blink during mode.
“4” will light when Defrsot hearet will be ON
"3" will light when Fan is ON
“1” will light when Compressor is ON

2. Push of Mode Button;

Starting manual defrost and ‘Super Freeze’ symbol will blink during mode.

3. Push of Mode Button;

Service man can see actual temperatures on this screen.
With SET button, service man can toogle between sensor values.
The sensor values are indicated in the following order;

- 1-Freezer sensor values
- 3-Defrost sensor values
- 4-AT sensor values

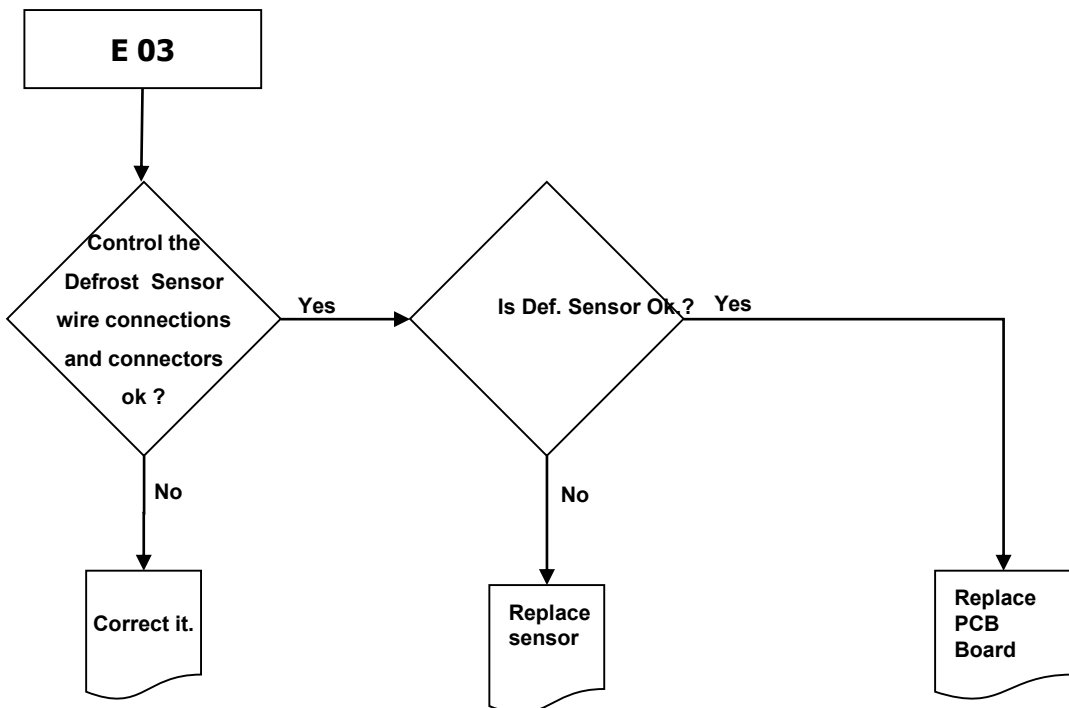
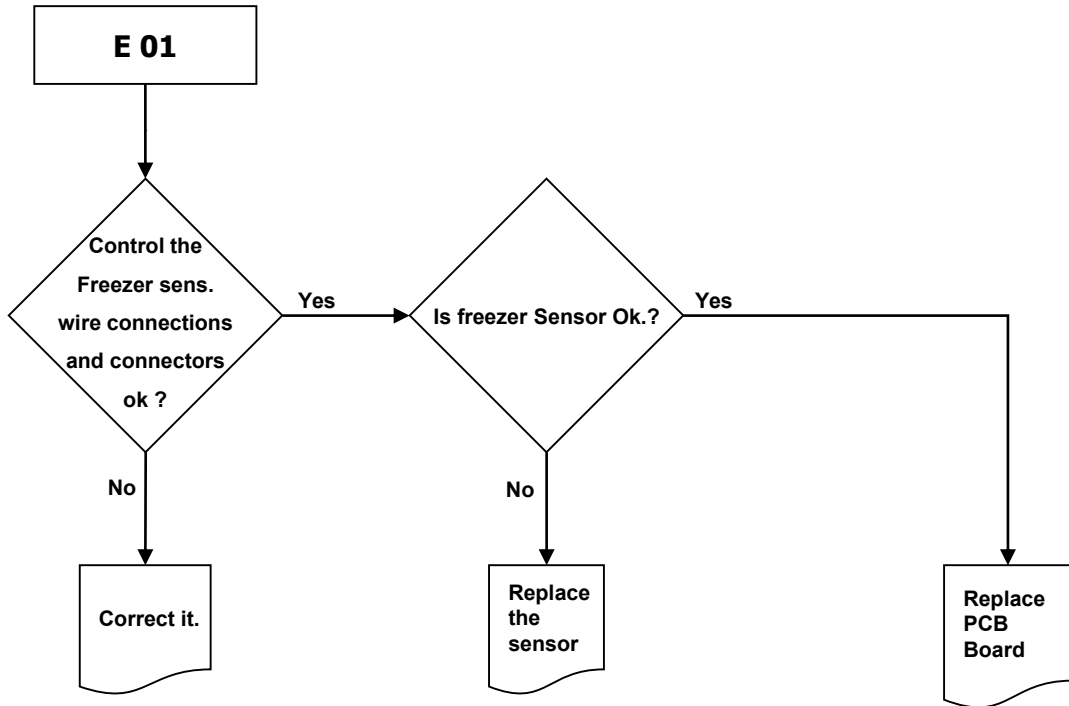
4. Push of Mode Button;

The door open/close position on this mode. So, service man can check door switch working or not.
If door is open, «ON» will be seen on set value screen, if door is close, «OF» will be seen on set value screen.



491E IMD DISPLAY

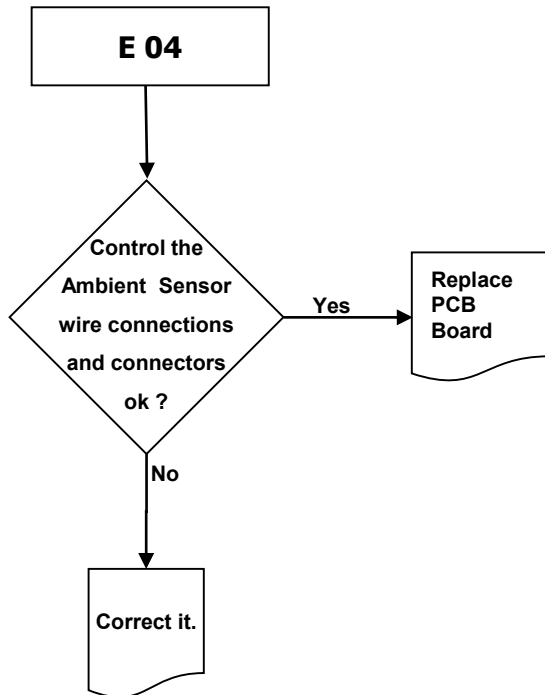
TROUBLE-SHOOTING CHART





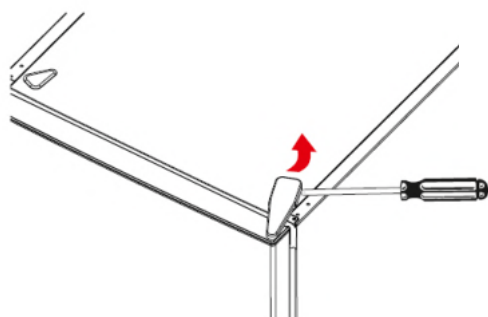
491E IMD DISPLAY

TROUBLE-SHOOTING CHART

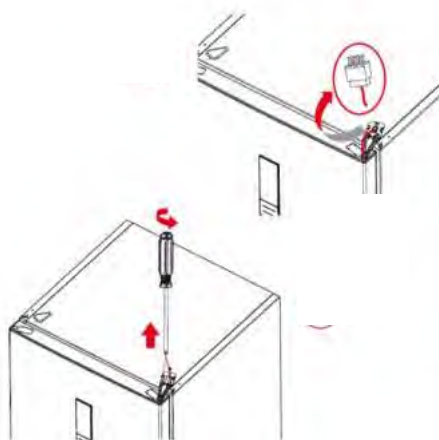


Reversing the door

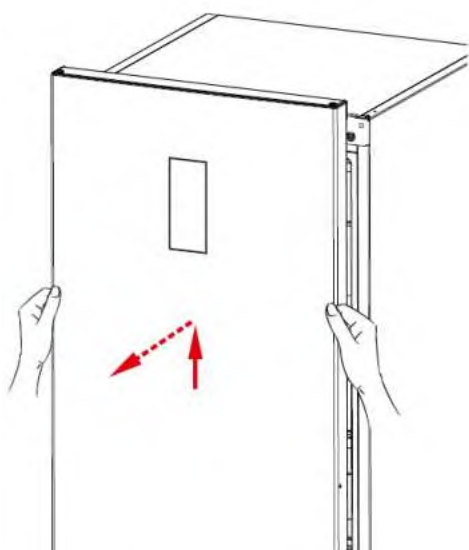
Hold the top hinge cover and remove it toward that direction



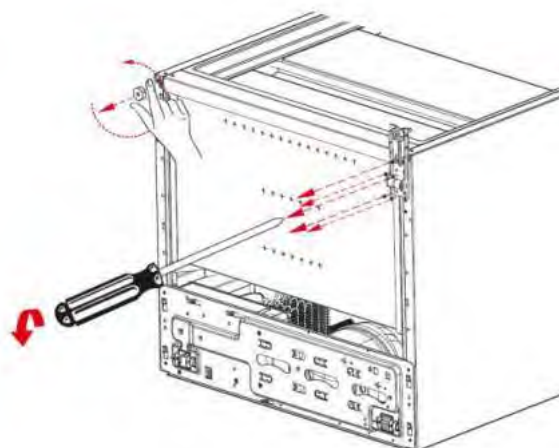
Disconnect the display connector.
Unscrew the screws fixing the top hinge and remove it.



Displace the door

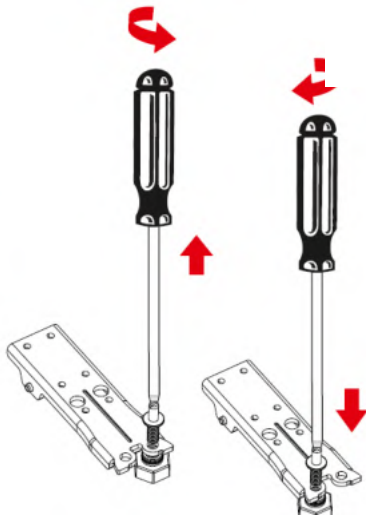


Unscrew the bottom hinge pin and screw it to other hole

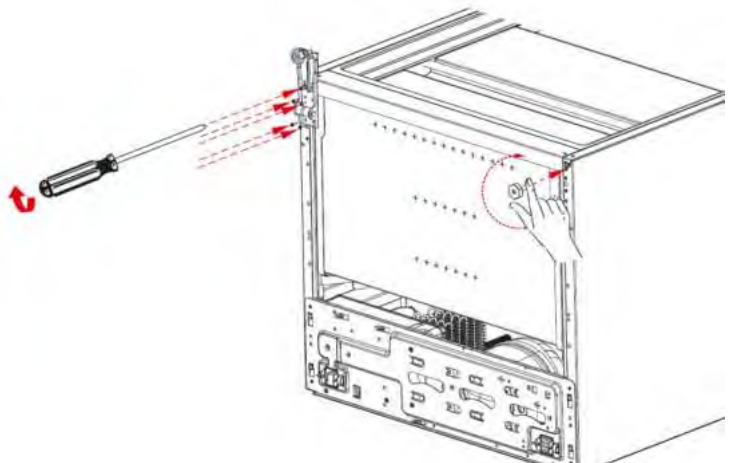


Reversing the door

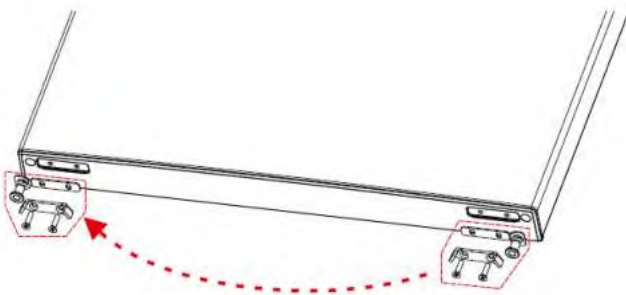
Unscrew the adjustable foot and unscrew the bottom hinge screws



Screw the bottom hinge to the left bottom side of refrigerator.
Screw the adjustable foot there.

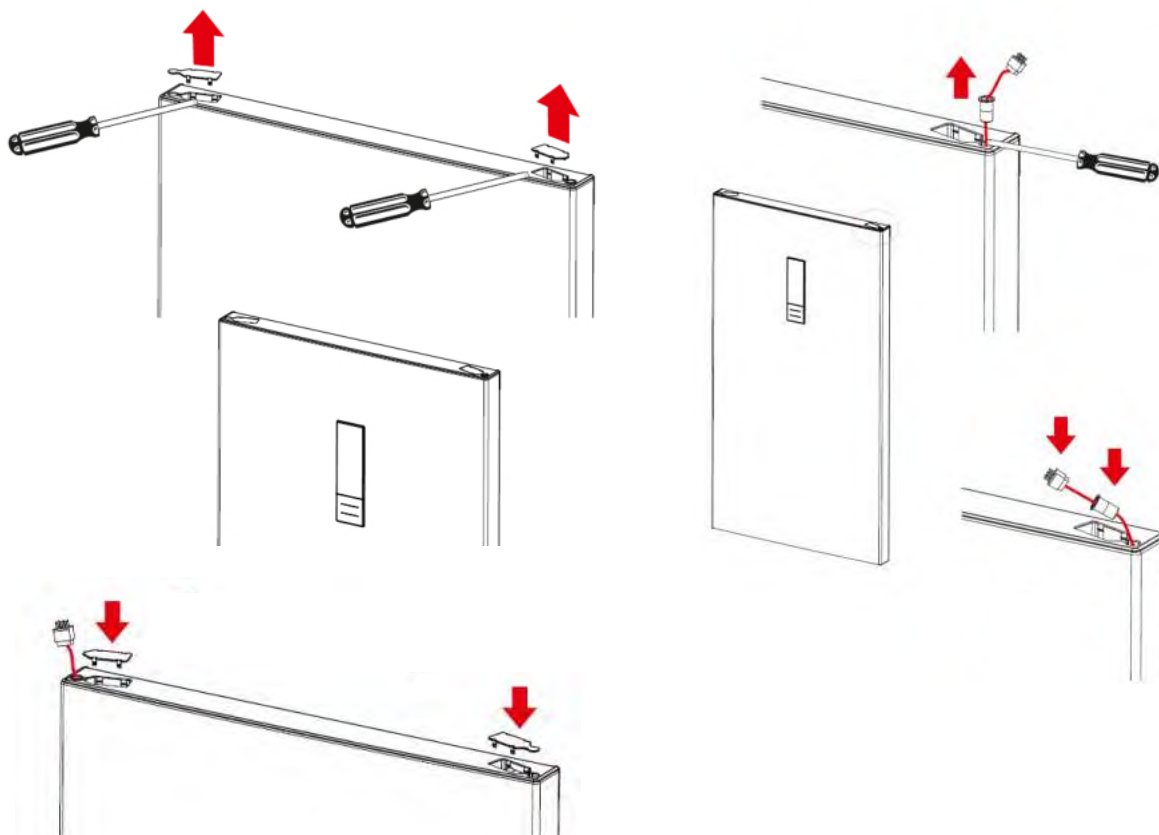


Unscrew the two screws fixing stopper and stopper support plate under the bottom door. After that screw the other side.

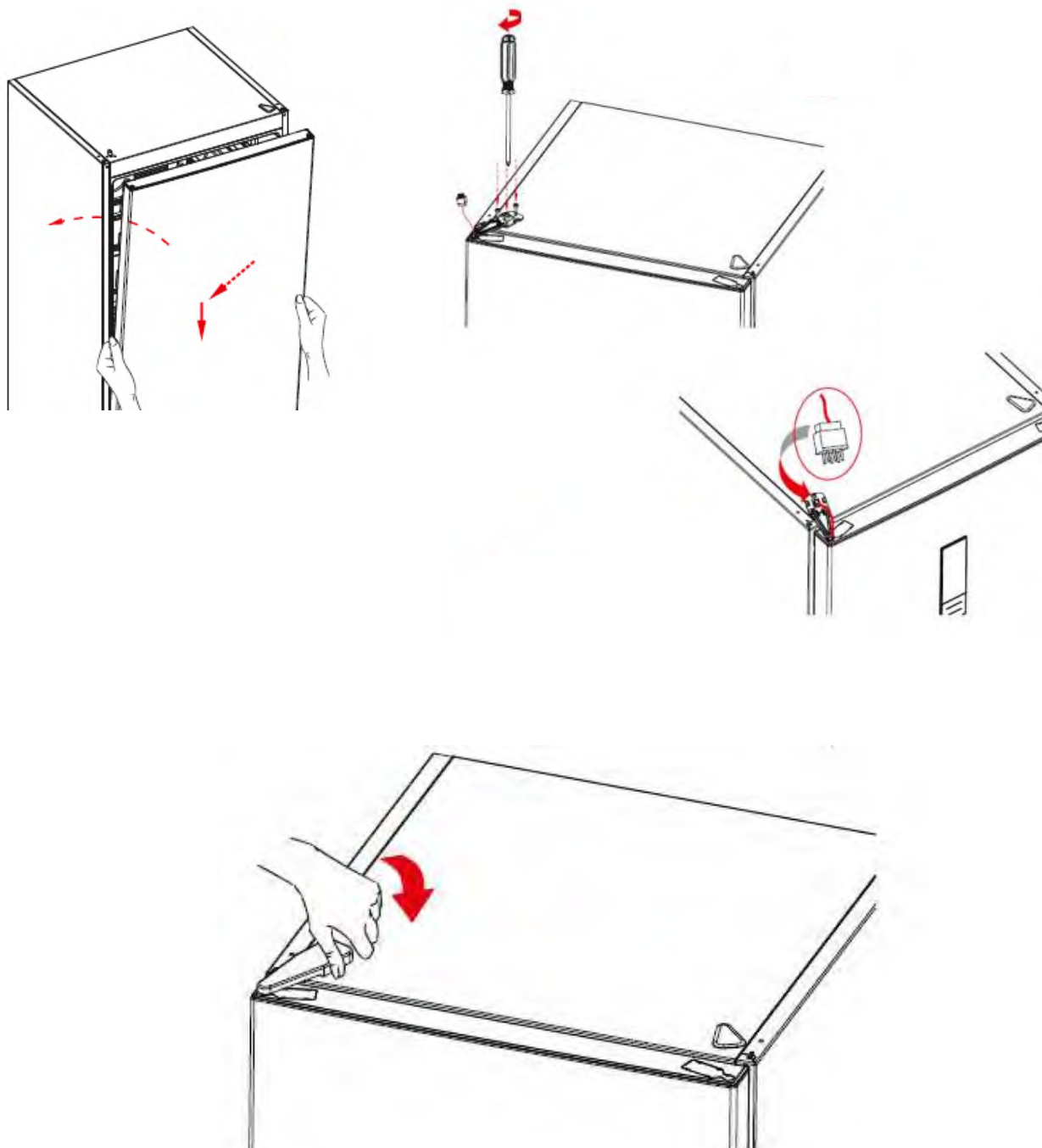


Reversing the door

Remove the socket cover-right of the top door. Remove the display socket.
Please use the socket cover to hidden other housing.



Place the door to the bottom hinge and then connect the display connector and screw the top hinge to the top panel. Place the top hinge cover.



 **Warning: The plug must be pulled out before the display is removed.**

1. Display can be removed with the disassembly tool. Do not use any sharp objects to remove the display.



3. Place and fix the disassembly tool on to display and pull to take out the display.

4. Take out the display cable socket.



1. Remove the refrigerator glass shelves and the Baskets.



2. Remove the plugs by pulling them under the base with a pointed device to remove the screw plugs and remove the screws.



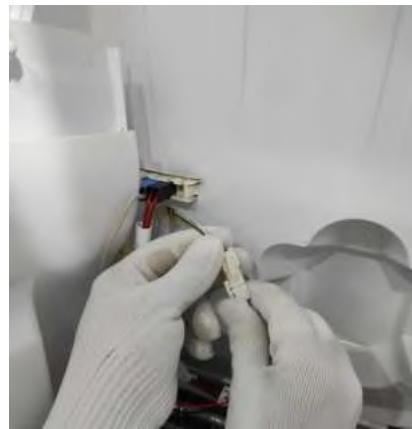
3. Keep the air duct by the left side or right side and stretch it. Get rid of the nails.



1. After remove the fan motor connector, airduct can be displaced (Picture-1 / Picture-2 / Picture-3)



Picture-1



Picture-2



Picture-3

2. Unscrew the airduct fixing screws and Get rid of the nails carefully. (Picture-4 / Picture-5 / Picture-6)



Picture-4



Picture-5



Picture-6

3. After remove the airduct cover, to displace the fan motor get rid of the the nail by using needlenose pliers. (Picture-7 / Picture-8 / Picture-9)



Picture-7



Picture-8



Picture-9



Warning: This process needs gas deflation, gas re-charging and welding processes so its need to be done by trained professionals.

1. Take out the fin evap heater (blue) connector and remove the bitumen covering the tubes.
(Picture-1 / Picture-2)



Picture-1



Picture-2



Warning: Before cutting the tube follow make sure the gas is evacuated.

2. To take out the evaporator, tubes need to be cut with oxygen welding. (Picture-3 / Picture-4)
Remove the evaporator by pulling forward in a horizontal direction. Do not push it up or down.
You may broke the fixing plastics.



Picture-3



Picture-4

Unscrew the screws which are fixing the main board cover.



CAUTION: The plug must be pulled out before the mainboard group is removed.

Pull the mainboard slightly forward and disconnect all the connectors and then replace it. Finally, place the mainboard cover and screw it.



Remove the led cover by pulling forward and disconnect the connector.



Take the reed switch out of its place with a screwdriver. Then Disconnect the connectors of the Switch and remove it.

NOTE: Reed Switch is a very sensitive miniature electronic card. So during the assembly and disassembly be carefull not to damage it.



Vestel refrigerator serial numbers are consist of 22 digits.

