

# Union Sound Limited

## Final Random Inspection Report for Air conditioner

Inspector Name:	Simon	Report Number:	NBQC100416-0102
Reviewed By:		Approved By:	
Insp.booking form no:	IN100518&IN100519&IN100520	Customer name:	ALTH

PO number:	BAZ912048 BAZ912049 BAZ912050	Inspection date:	15-16 <sup>th</sup> April 2010
Supplier:	AUX	Destination country:	FRANCE
Model Number:	CLF109E	Maker's ref:	ASW-H09A4/EVR1-C
Quantity:	117+117+190=424	Product Brand:	
Product type:	Air conditioner	Remark:	

Quantity of the PO:	424PCS	Single sampling plans for Normal inspection according to MIL-STD-105E, Level II; Cr: 0, Maj: 1.0, Min: 4.0				
Lot Size:	424PCS	Defects	Critical:	Major:	Minor:	
Production Status:	404PCS	95 %	Allowed	0	0	1
Packing Status:	404PCS	95%	Found	1	0	1
Sampling Size:	10		Result	Re	Ac	Ac

(Ac - Accepted, Re - Rejected)

Inspection Result:	rejected
Note: Fill in Conformed or Rejected or Pending	
Compare the goods with QS report:	ASW-H09C4-EJR1 Air conditioner-QS-20081112
Remark:	non-conformity

Defects				
No.	Defect Description (Serial number)	Critical	Major	Minor
1	The water tube is bended			1
2	The N wire taut before earthing wire, but the earthing wire is taut before L wire, the maker say they make sure of that their worker will make the anchorage tightly to fix supply cord, so they think it is not a problem	1		
3				
Total:		1	0	1

Remarks to be approved (Ac – Accept, Re – Reject, Cp – Condition passed)			
No.	Remarks	Sample Size %	Result
1	The instructions seem not write the sentence for the maximum permissible system impedance value for the product comply with EMC standard EN61000-3-11	100%	pending
2	The plastic bag without the warning words for suffocation but with hole	100%	pending
3	Step motor"24BYJ48 12VDC Huacheng" is not same as the ones listed in CDF	100%	Pending
4	Optocoupler"TLP3023" is not same as the ones listed in CDF	100%	pending
5	Fuse"50T 3.15A 250V VDE" is not same as the ones listed in CDF	100%	pending
6	4-way valve"DHF-5 240V~ 6.5W TUV" is not same as the ones"DHF-5 230V 6.5W TUV" in CDF	100%	pending
7	some datas in master carton of indoor unit seem change, but it is same as the ones in label and instruction	100%	Pending
8	The battery box of remote control had better mark the battery's type	100%	Cp

### Product Description

# Union Sound Limited

## Final Random Inspection Report for Air conditioner

Product dimension without packing(mm)	Indoor part:670x250x195mm;outdoor part:810x550x315mm			
Product dimension with packing(mm)	Indoor part:750x310x250mm;outdoor part:880x610x360mm			
Nominal Power/Current input:	220-240V 50Hz max 1010W			
Electrical insulation class:	Class I			
Battery Type:	No battery inside remote control			
Material / Colour / Presentation	<b>SPLIT WALL MOUNTED A/C</b> <b>COOLING-HEATING 9000 Btu - KING D'HOME</b> <b>BRAND</b> <b>REF. ASW-H09A4/EVR1-C</b> Electronic touch controls with on/off hour timer + remote electronic touch control (NO batteries included) + 4 metres connecting pipes Colour : WHITE main unit & split <b>KING D'HOME LOGO TO BE AFFIXED ON UNIT FRONT</b> <b>KING D'HOME Brand name on item / package / energy label / I/M &amp; rating label</b> Instruction manual in French Cooling capacity : 9000 Btu/hr (2,6 kW) Heating capacity : 2.7 kW - Power supply : 220-240 V / 50 Hz 24 hours timer with auto mode & sleep mode Refrigerant : R410A CE / GS / EMC & LVD approval - EER : A SILK SCREEN of the unit : to be translated into FRENCH (approval before final printing) Packing : 2 cartons (1st carton w/ indoor unit + remote control-2nd carton w/ outside unit + connecting pipe)			
User manual language:	French			
Accessories:	4m Brass connection tube Dg4 and Dg8 and 2m water tube I/M,remote control			
Serial number:	<b>KINCLFK4100300001 TO KINCLFK4100300117</b> <b>KINCLFK4100300233 TO KINCLFK4100300349</b> <b>KINCLFK4100200001 TO KINCLFK4100200190</b>			
Item (Indoor+outdoor)	Product	Accessories	Battery	Packing
Weight (g)	33550	1650		4000
Net Weight (g)	35200	Gross Weight (g)	39200	
Remark: Net Weight= Product+ Accessories, Gross Weight= Total 1 carton weight / quantity				

Certificates (To fill in with the result, P: Passed, Cp: Condition passed, R: Rejected or description)						
Direct	Standards		Lab	Date	Report N°	Result
C E	LVD	EN 60335-1: 2002 +A11 +A1 +A12+A2+A13 EN60335-2-40:2003+A11+A12+A1	TUV	2009-03-09	15015511008	P
	EMF	EN 62233:2008	TUV	2009-03-09	15015511008	P
	EMC	EN55014-1 :2006 EN55014-2/A1 :2001 EN61000-3-2 :2006 EN61000-3-3/A2:2005 EN61000-3-11:2000	TUV	2009-02-18	708880819002-03	P
GS	EN 60335-1: 2002 +A11 +A1 +A12+A2+A13 EN60335-2-40:2003+A11+A12+A1 EN62233:2008	TUV	2009-03-09	15015511008	P	
Energy	EN 14511					Made by the factory
RoHS	A Compliance Declaration					
	Consolidated test report					Made by the factory

# Union Sound Limited

## Final Random Inspection Report for Air conditioner

Remark:	All components certificates				
	XRF report for Final product				
	HSPM factory certificate				

Inspection S-1 sampling plan				
Samples Quantity: 1pc		Result		Comments
Item no.	Test description	Passed (X)	Failed (pcs)	
1	Internal check for workmanship & Cr., Cl.		F	
2	The earthing wire longer than L/N wire not less than 10mm.		F	Earthing wire taut before L/N wire
3	Circuit Diagram	P		
4	Test finger test (Clause 21.101)	P		
5	Spring Hammer test (With 0.5J)	P		
6	Power cord Pull / Push / Torque test	P		Clause 25, <=1kg, 30N, >1 & <=4kg, 60N, >4kg, 100N
7	Transport drop test on master carton (1pc)	P		GW<=5Kg, H=140-10XGW(cm) GW>5Kg, H=70-GW (cm)
8	Aging test	P		1h
9	Torque of earth screws. (1.2 Nm)	P		
10	The compressor can re-start within 3 minutes after stopped.	P		About 3min
11	Thermostat range (18-32)	P		16-32degree
12	Bar code number	P		
13	Bar code scan	P		
14	Markings(CE, trash logo, voltage, warning)	P		
15	Markings durability test	P		
16	Artwork check	P		
17	Compare product with giftbox/offer sheet / PO description / IM	P		
18	Compare the artwork with provided ones (IM/Giftbox/ markings)	P		
19	Check earth wire size	P		EN60335-1 Clause: 27.3
20	Standby Mode	N/A		1W => eco-design 2005/32/EC
21	Off mode	N/A		1W=> eco-design 2005/32/EC
22	Display function	N/A		2W=> eco-design 2005/32/EC

Inspection S-3 sampling plan				
Samples Quantity: 8 pcs		Result		Comments
Item no.	Test description	Passed (X)	Failed (pcs)	
1	Switch ON/OFF 20Cycles for main switch	P		Remote control
2	All components assembly			N/A
3	Air hole and warning sentence for plastic bag			See remark
4	Serial number	p		

Inspection G-II sampling plan				
Samples Quantity:10 pcs+40pcs inspection in production line		Result		Comments
Item no.	Test description	Passed (X)	Failed (pcs)	
1	Electric strength: Live Part and accessible metal part at 1250V (Class I)	p		
2	Electric strength: Live Part and non-metal enclosure at 3000V	p		

## Union Sound Limited

### Final Random Inspection Report for Air conditioner

	Earth continuity test (25A, <0.1Ω)	p		
3	Switch position function			N/A
4	Input power for cool mode (W)	P		Test 1pc in lab
5	Input power for heat mode (W)	P		Test 1pc in lab
6	Fan speed mode(rpm/min)	p		low:898;mid:932;high:1027
7	Temperature adjustable	p		
8	Remote controller function	p		
9	Timer	p		
10	On/Off time setup function	p		
11	Sweep adjustable or setup	p		

#### Critical & Main components list

No.	Component type	Type, characteristics, supplier	Approval	Compliance with CDF	Result
1	Power Plug	TS03 16A 250V Sangle	VDE	Y	P
2	Power Cord	H05VV-F 3G1.5mm2 Jintao	VDE	Y	P
3	Interconnection cord	H07RN-F 5G1.0mm2 Yusheng	VDE	Y	P
4	Compressor	Toshiba PA98X1C-4DZDE 220-240V R410a	VDE	Y	P
5	Capcitor for compressor	CBB65 25 μ F 450V 50/60Hz 40/70/21 Tongfeng	VDE	Y	P
6	Relay for compressor	SLI-S-112DM 30A 240V;12VDC	TUV	Y	P
7	Indoor fan motor	YYK13-4 220-240V 50Hz 13W	TUV	Y	P
8	Capacitor for Indoor Motor	CBB61 1.5 μ F ± 5%450V 40/70/21	TUV	Y	P
9	Outdoor fan motor	YDK25-6 220-240V 50Hz 25W	TUV	Y	P
10	Capacitor of outdoor fan motor	CBB61 1.5 μ F ± 5%450V 40/70/21 bicai	TUV	Y	P
11	Step motor	24BYJ48 DC12V Huacheng		N	See remark
12	X2 capacitor	CBB62 0.1 μ F 40/85/21	VDE		
13	Fuse for PCB	50T 3.15A250V	VDE	N	See remark
14	Relay for outdoor fan motor & 4-way valve	SJ-S-112DM 5A 250V;12VDC	VDE	Y	P
15	Optocoupler	TLP3203		N	See remark
16	transformer	TDB-6-B4 220-240V 50Hz AC11V 400mA		Y	P
17	4-way valve	Chunhui DHF-5 240V 6.5W 50Hz	TUV	N	See remark
18	Terminal of indoor unit	JXW 600V 4mm2 qiangli		Y	P
19	Terminal of outdoor unit	JXO 600V 30A 4mm2 yuxi		Y	P
20	PCB	KB5150		Y	P

#### Defect Photos:

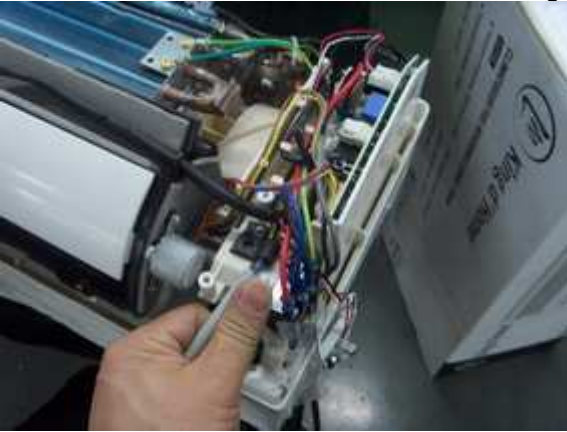
1 The water tube is bended



# Union Sound Limited

## Final Random Inspection Report for Air conditioner

2 The N wire taut before earthing wire, but the earthing wire is taut before L wire, the maker say they make sure of that their worker will make the anchorage tightly to fix supply cord, so they think it is not a problem



Remark:

3 Step motor "24BYJ48 12VDC Huacheng" is not same as the ones listed in CDF



4 Optocoupler "TLP3023" is not same as the ones listed in CDF



5 Fuse "50T 3.15A 250V VDE" is not same as the ones listed in CDF



# Union Sound Limited

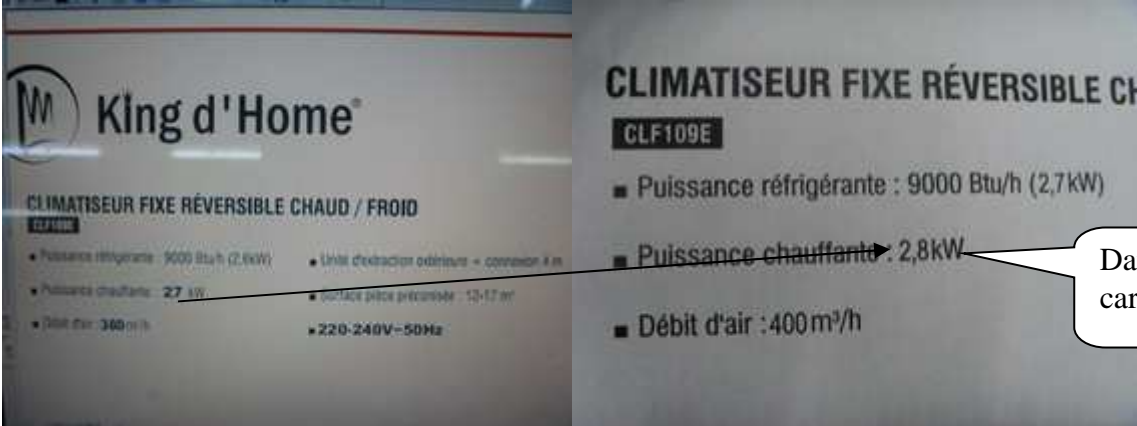
## Final Random Inspection Report for Air conditioner



6 4-way valve"DHF-5 240V~ 6.5W TUV" is not same as the ones"DHF-5 230V 6.5W TUV" in CDF



7 some datas in master carton of indoor unit seem change, but it is same as the ones in label and instruction



8 The battery box of remote control had better mark the battery's type



# Union Sound Limited

## Final Random Inspection Report for Air conditioner

### Photos Documentation



# Union Sound Limited

## Final Random Inspection Report for Air conditioner





# Union Sound Limited

## Final Random Inspection Report for Air conditioner



**CLIMATISEUR FIXE REVERSIBLE CLF109E**  
Unité intérieure

1	Modèle n°	CLF109E
2	Tension nominale	220-240V~
3	Fréquence nominale	50 Hz
4	Puissance max.	1010 W
5	Courant max.	3,2 A
6	Capacité réfrigérante	2700 W
7	Capacité chauffante	2800 W
8	Puissance alimentation	réfrigérante: 840 W
		chauffante: 780 W
9	Courant alimentation	réfrigérante: 3,66 A
		chauffante: 3,37 A
10	Débit d'air max.	400m³/h
11	Réfrigérant / masse	R410A / 680g
12	Pression d'aspiration max.	1,15 MPa
13	Pression de décharge max.	4,15 MPa
14	Classe protection électrique	I
15	Niveau de bruit	unité intérieure: ≤ 26 dB (A)
		unité extérieure: ≤ 50 dB (A)
16	Poids	unité intérieure: 7,5 kg
		unité extérieure: 29 kg

8	Puissance alimentation	réfrigérante: 840 W
		chauffante: 780 W
9	Courant alimentation	réfrigérante: 3,66 A
		chauffante: 3,37 A
10	Débit d'air max.	400m³/h
11	Réfrigérant / masse	R410A / 680g
12	Pression d'aspiration max.	1,15 MPa
13	Pression de décharge max.	4,15 MPa
14	Classe protection électrique	I
15	Niveau de bruit	unité intérieure: ≤ 26 dB (A)
		unité extérieure: ≤ 50 dB (A)
16	Poids	unité intérieure: 7,5 kg
		unité extérieure: 29 kg

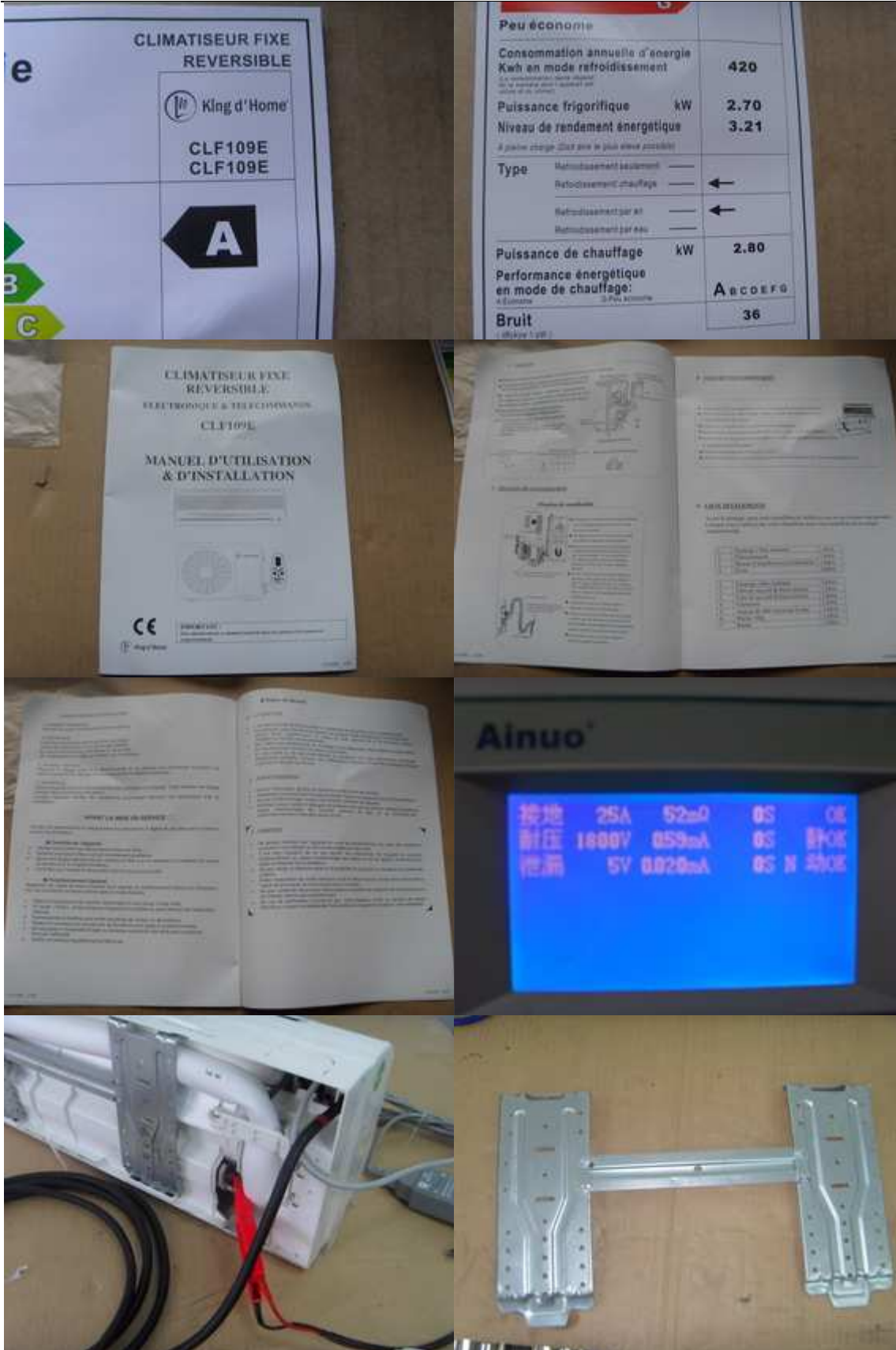
Fabrique: en Chine  
N° série: KINCLFMA 1003 00107

**King d'Home** **CE**



# Union Sound Limited

## Final Random Inspection Report for Air conditioner



# Union Sound Limited

## Final Random Inspection Report for Air conditioner



10	Débit d'air max. :		600m <sup>3</sup> /h
11	Réfrigérant / masse :		R410A / 660g
12	Pression d'aspiration max. :		1,15 MPa
13	Pression de décharge max. :		4,15 MPa
14	Classe protection électrique :		I
15	Niveau de bruit :	unité intérieure:	≤ 36 dB (A)
		unité extérieure:	≤ 50 dB (A)
16	Poids :	unité intérieure:	7,5 kg
		unité extérieure:	29 kg

Fabriqué en Chine  
 N° série : KINCLFK4 1003 00109

**KIng d'Home** **CE**

7	Réfrigérant / masse :		R410A
8	Degré protection humidité :		
9	Poids :		
Fabriqué en Chine			
N° série : KINCLFK4 1003 00087			
<b>KIng d'Home</b> <b>CE</b>			
Ce produit contient des gaz relevant du protocole de KYOTO			
Nom chimique du gaz		R410A	
Potentialité de réchauffement planétaire		100	





# Union Sound Limited

## Final Random Inspection Report for Air conditioner





**Union Sound Limited**  
Final Random Inspection Report for Air conditioner



# Union Sound Limited

## Final Random Inspection Report for Air conditioner



**Union Sound Limited**  
Final Random Inspection Report for Air conditioner





# Union Sound Limited

## Final Random Inspection Report for Air conditioner





# Union Sound Limited

## Final Random Inspection Report for Air conditioner



**Union Sound Limited**  
Final Random Inspection Report for Air conditioner





# Union Sound Limited

## Final Random Inspection Report for Air conditioner



# Union Sound Limited

## Final Random Inspection Report for Air conditioner





**Union Sound Limited**  
Final Random Inspection Report for Air conditioner

