

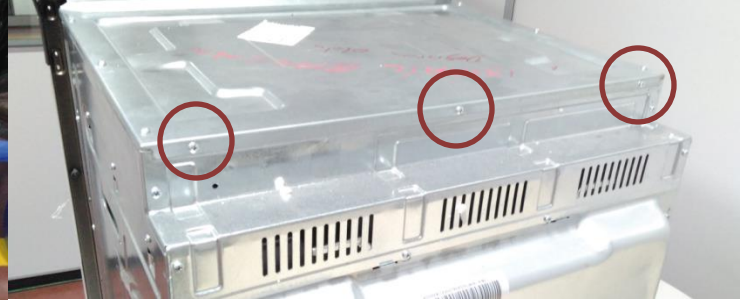
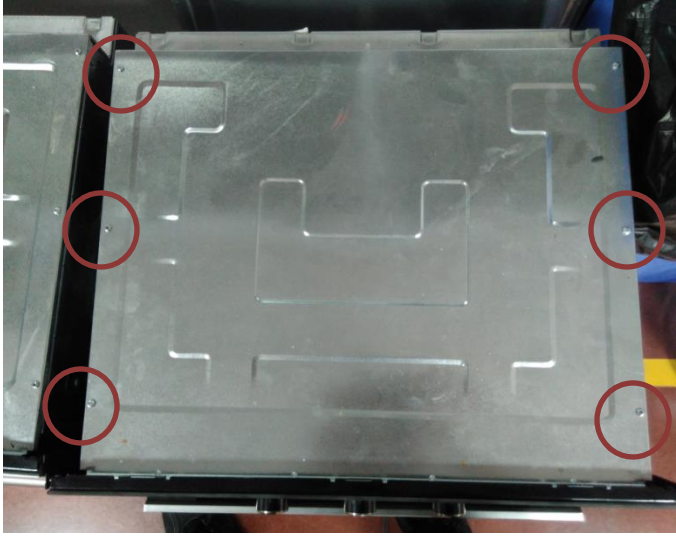
	<b>BUILT IN OVEN</b>	<b>DOC. NR : 04-03/FR301</b>
		<b>REV.NR/DATE:02/19.08.2015</b>
		<b>ITEM NR:</b>
		<b>PAGE : 1/23</b>

## TABLE OF CONTENTS

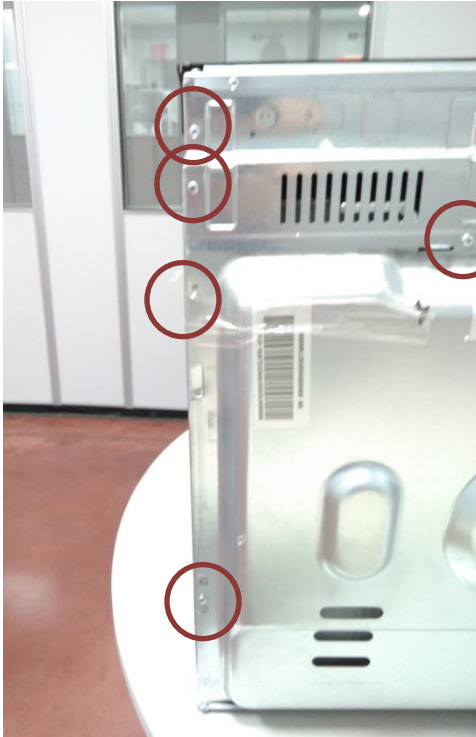
<b>Panels</b> .....	<b>2-4</b>
<b>Front Panel</b> .....	<b>5-6</b>
<b>Oven Door</b> .....	<b>7-14</b>
<b>Fan Cover And Catalytic Parts</b> .....	<b>15-16</b>
<b>Cooling Fan</b> .....	<b>17-18</b>
<b>Heaters</b> .....	<b>19-20</b>
<b>Oven Light</b> .....	<b>21</b>
<b>Fan Motor</b> .....	<b>22</b>
<b>Turnspit Motor</b> .....	<b>23</b>

FILE	ISSUE DATE	PREPARED BY	CONTROLLED BY	APPROVED BY
\\manfile\PISIRICICHAZLARFAB\Urun Audit\MÜŞTERİ DESTEK\SERVIS KILAVUZU\Servis kılavuzu	22.03.2017	Ali TUNA		

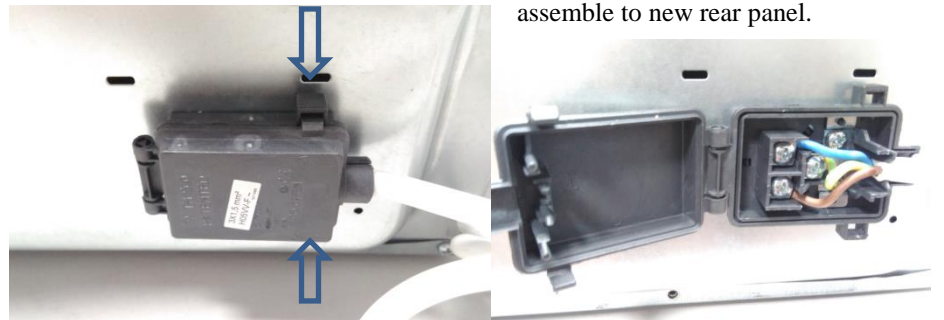
**For disassembling upper panel, unscrew which are shown inside circles.**



**For disassembling rear panel, unscrew which are shown inside circles. Also, unscrew the screws right side of rear panel which is placed same locations**



Disassemble the terminal box by pushing clips with screwdriver as below and assemble to new rear panel.

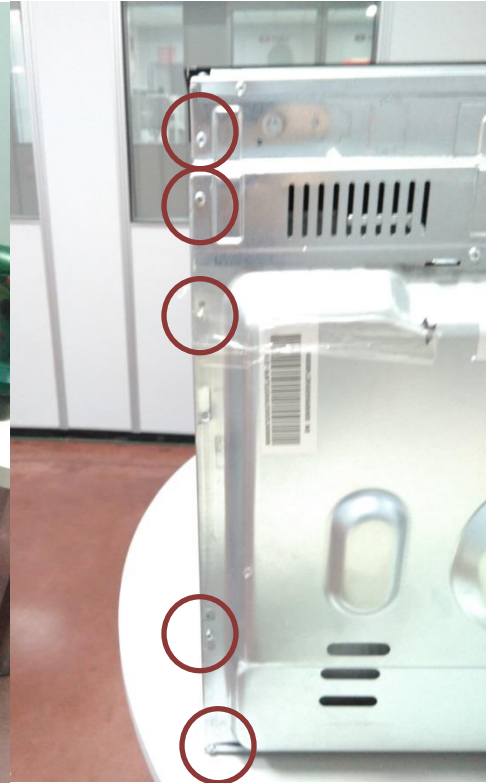
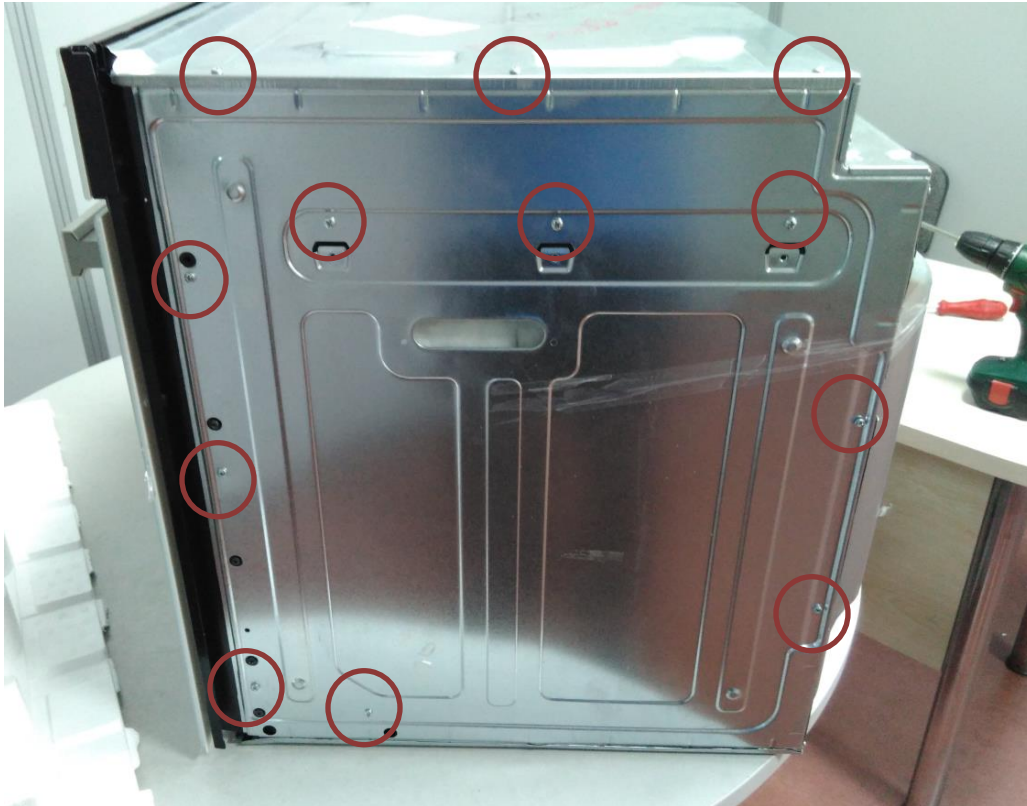


FILE	ISSUE DATE	PREPARED BY	CONTROLLED BY	APPROVED BY
\\manfile\PISIRICICHAZLARFAB\Urun Audit\MÜŞTERİ DESTEK\SERVIS KILAVUZU\Servis kılavuzu	22.03.2017	Ali TUNA		

Free the rear panel from clips.

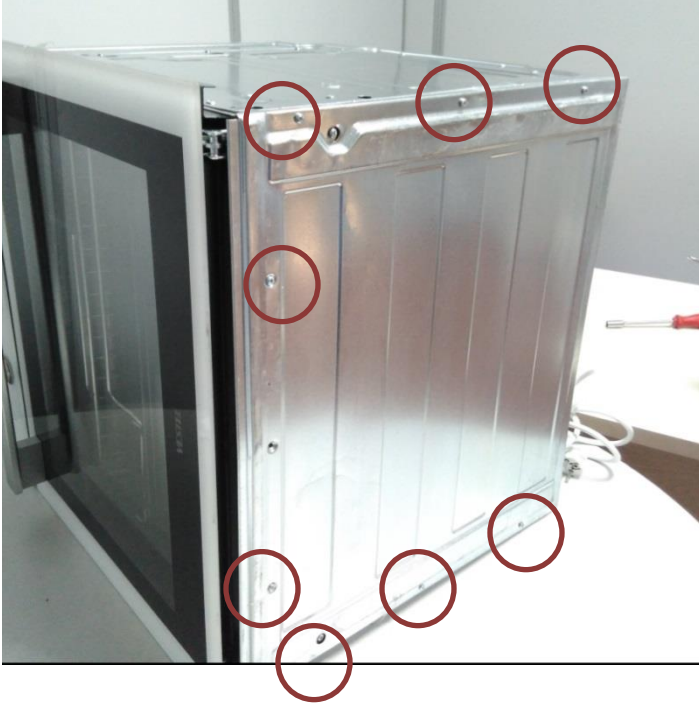


**For disassembling side panel, unscrew which are shown inside circles at rear, upper and side panels.**



FILE	ISSUE DATE	PREPARED BY	CONTROLLED BY	APPROVED BY
\\manfile\PISIRICICHAZLARFAB\Ur un Audit\MÜŞTERİ DESTEK\SERVIS KILAVUZU\Servis kılavuzu	22.03.2017	Ali TUNA		

**For disassembling bottom panel, unscrew which are shown inside circles at rear, bottom panels.**



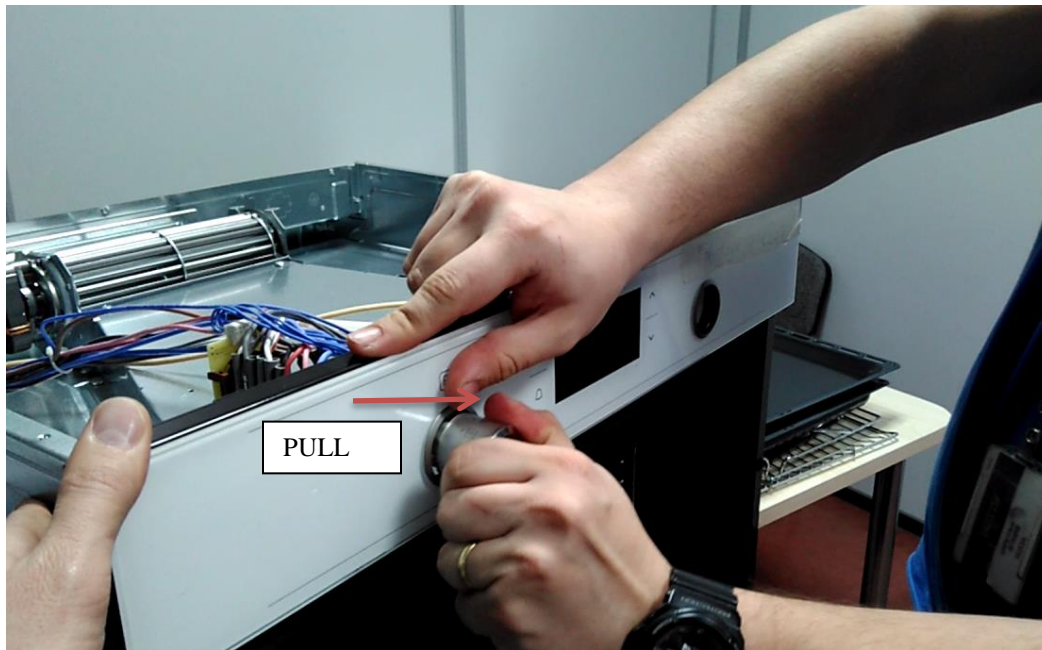
FILE	ISSUE DATE	PREPARED BY	CONTROLLED BY	APPROVED BY
\\manfile\PISIRICICHAZLARFAB\Ur un Audit\MÜŞTERİ DESTEK\SERVIS KILAVUZU\Servis kılavuzu	22.03.2017	Ali TUNA		

**Disassembly of Front Panel**

Unscrew the screws which is at bottom of front panel. Some models have 3 screws which are located, right, left and middle.

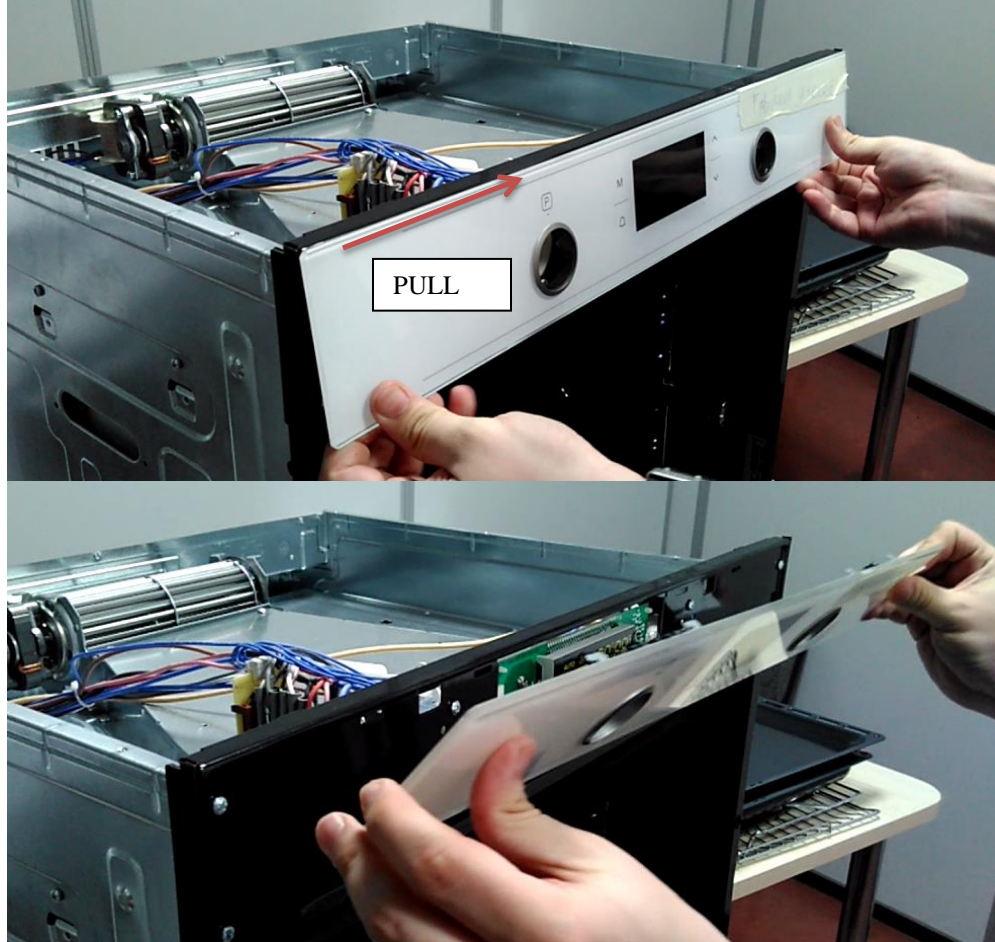


Remove the knobs by pulling.



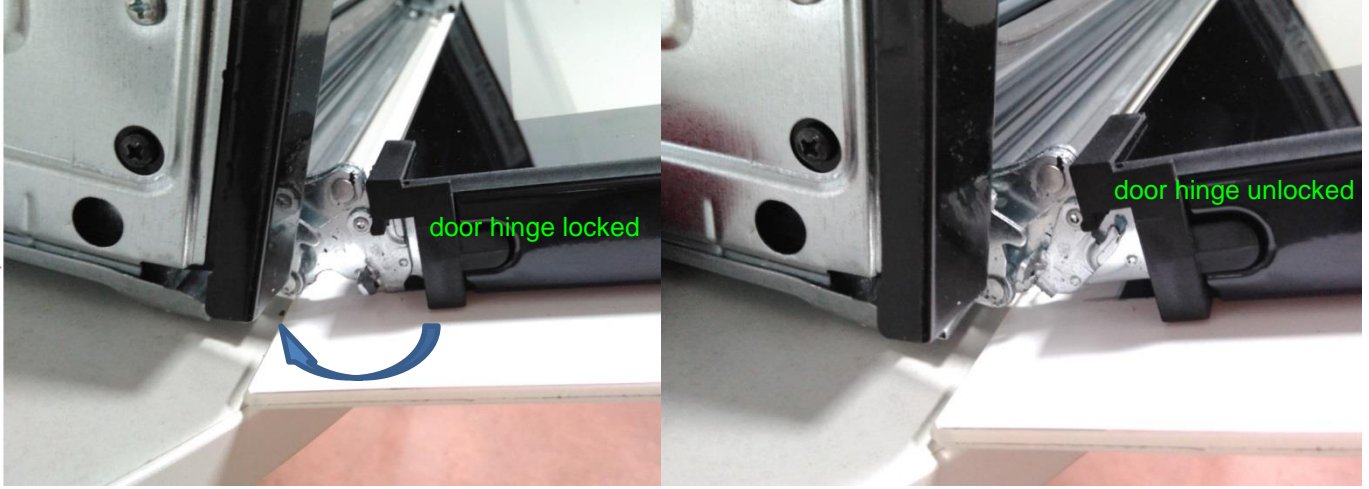
FILE	ISSUE DATE	PREPARED BY	CONTROLLED BY	APPROVED BY
\\manfile\PISIRICICHAZLARFAB\Ur un Audit\MÜŞTERİ DESTEK\SERVIS KILAVUZU\Servis kılavuzu	22.03.2017	Ali TUNA		

Pull to right the panel for removing the clips from inner panel.

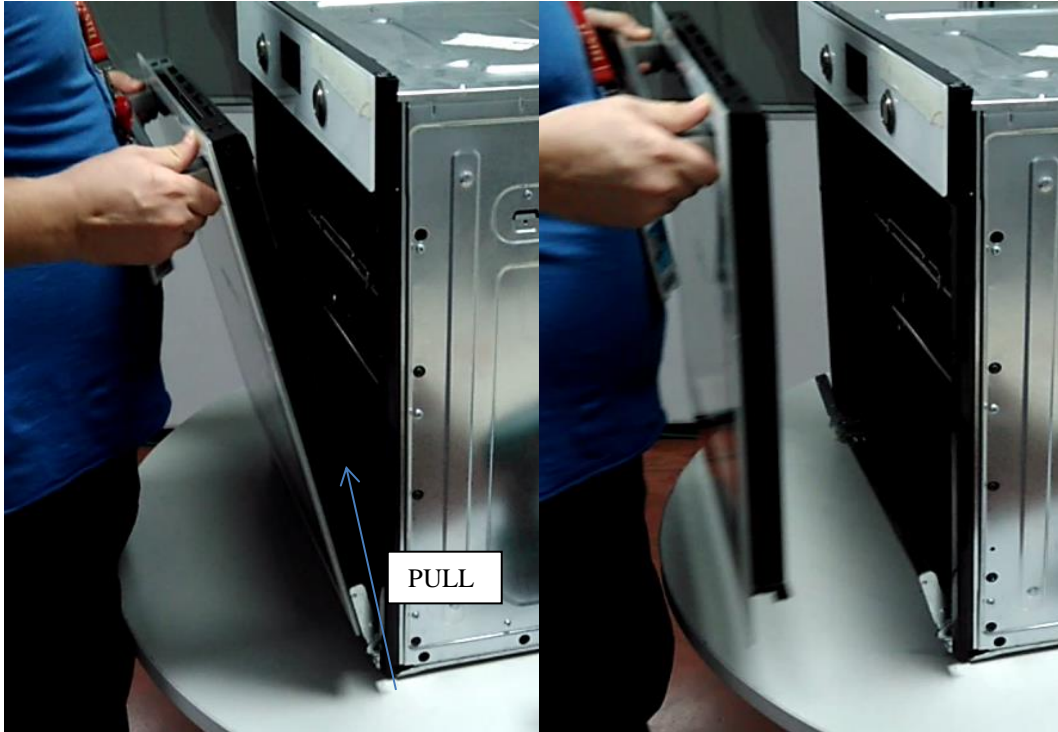


FILE	ISSUE DATE	PREPARED BY	CONTROLLED BY	APPROVED BY
\\manfile\PISIRICICHAZLARFAB\Ur un Audit\MÜŞTERİ DESTEK\SERVIS KILAVUZU\Servis kılavuzu	22.03.2017	Ali TUNA		

**DISASSEMBLY OF FULL GLASS DOORS**

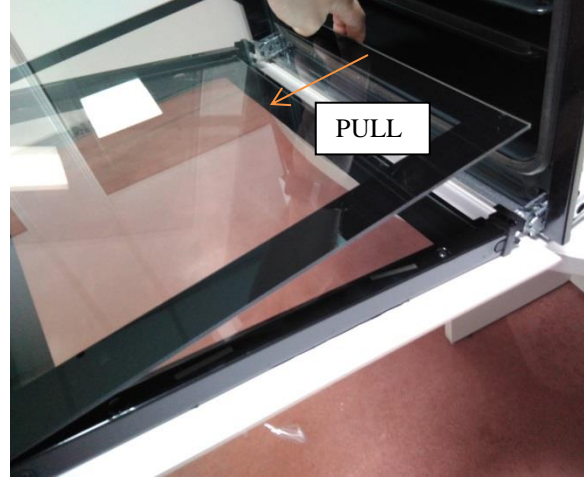


After unlock the hinge, pull and free the door as below.



FILE	ISSUE DATE	PREPARED BY	CONTROLLED BY	APPROVED BY
\\manfile\PISIRICICHAZLARFAB\Ur un Audit\MÜŞTERİ DESTEK\SERVIS KILAVUZU\Servis kılavuzu	22.03.2017	Ali TUNA		

If product has easy to remove glass, remove inner glass as below.



Unscrew as below to disassemble door profile.



FILE	ISSUE DATE	PREPARED BY	CONTROLLED BY	APPROVED BY
\\manfile\PISIRICICHAZLARFAB\Ur un Audit\MÜŞTERİ DESTEK\SERVIS KILAVUZU\Servis kılavuzu	22.03.2017	Ali TUNA		

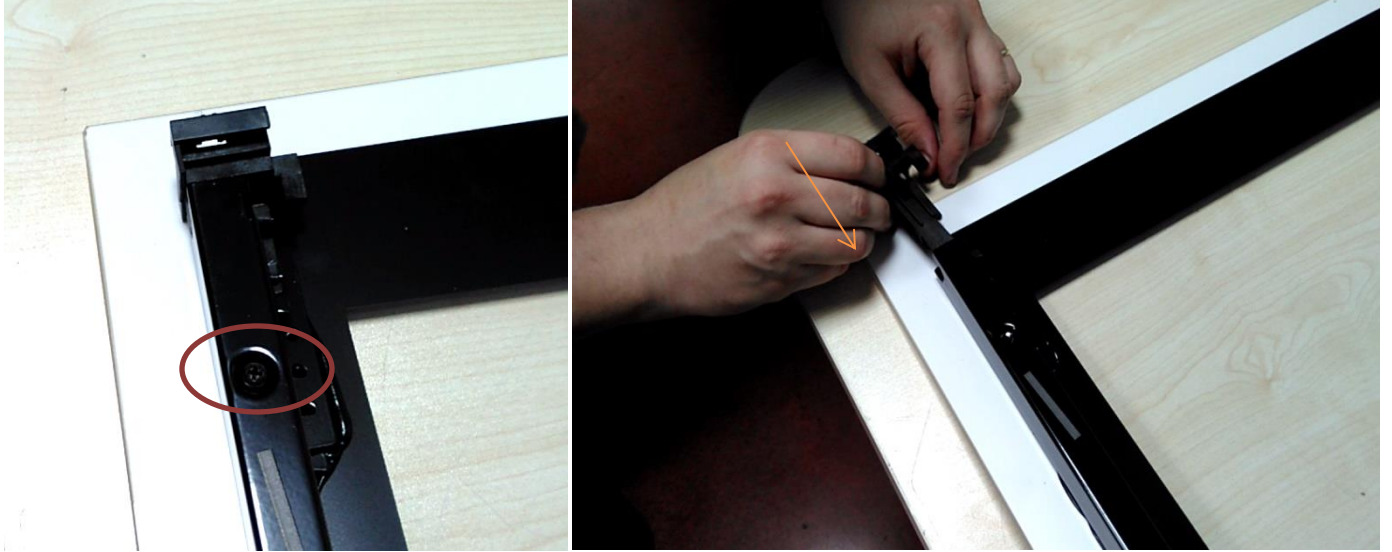


If there is a middle glass, remove it as below. For assembly, be sure the glass fit properly.

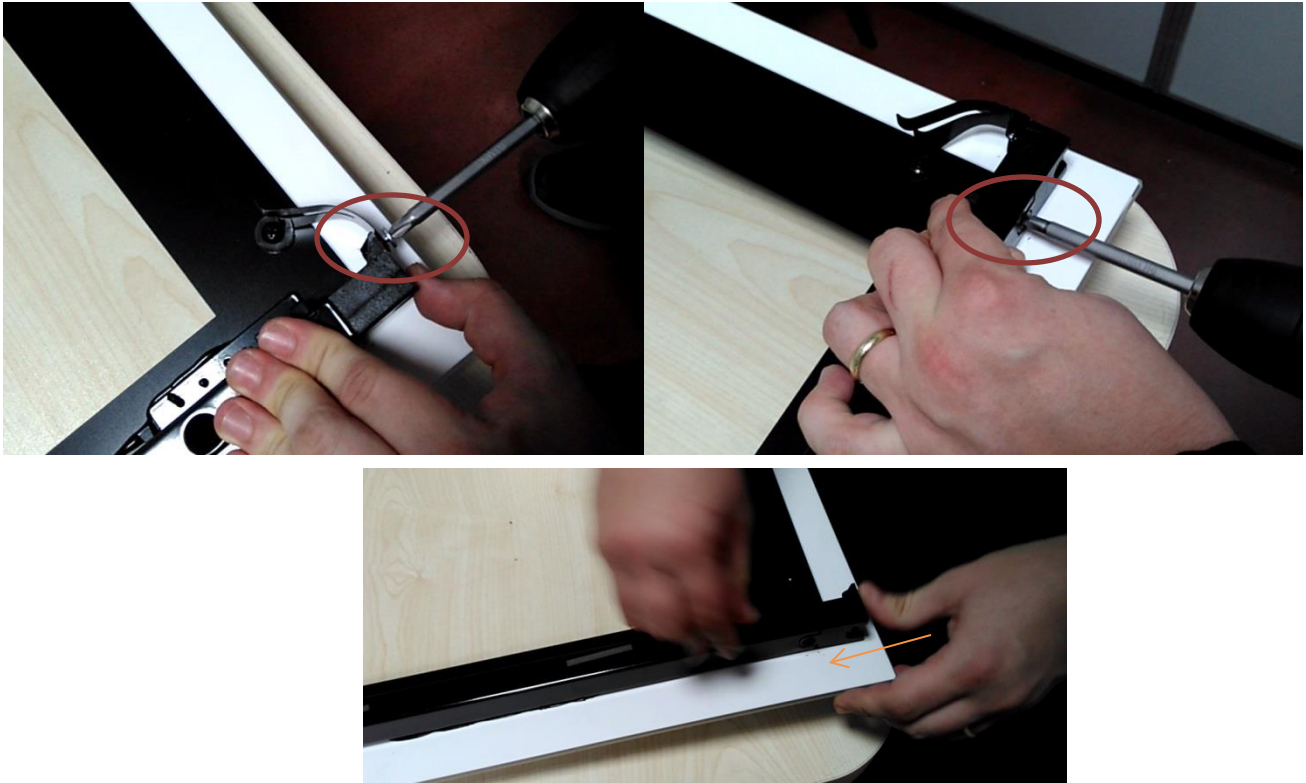


FILE	ISSUE DATE	PREPARED BY	CONTROLLED BY	APPROVED BY
\\manfile\PISIRICICHAZLARFAB\Urun Audit\MÜŞTERİ DESTEK\SERVIS KILAVUZU\Servis kılavuzu	22.03.2017	Ali TUNA		

Disassemble plastic hinge slot as below



Disassemble removable inner glass spring as below,

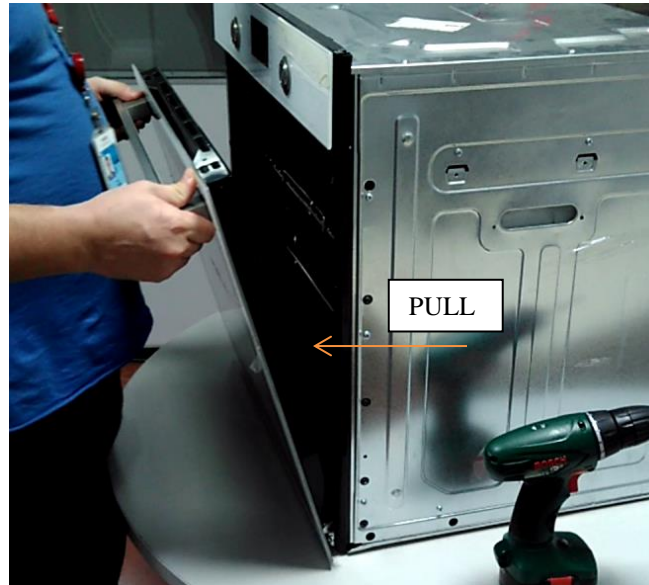


FILE	ISSUE DATE	PREPARED BY	CONTROLLED BY	APPROVED BY
\\manfile\PISIRICICHAZLARFAB\Ur un Audit\MÜŞTERİ DESTEK\SERVIS KILAVUZU\Servis kılavuzu	22.03.2017	Ali TUNA		

**DISASSEMBLY OF FLAT OVEN DOORS**



After unlock the hinge, pull and free the door as below.

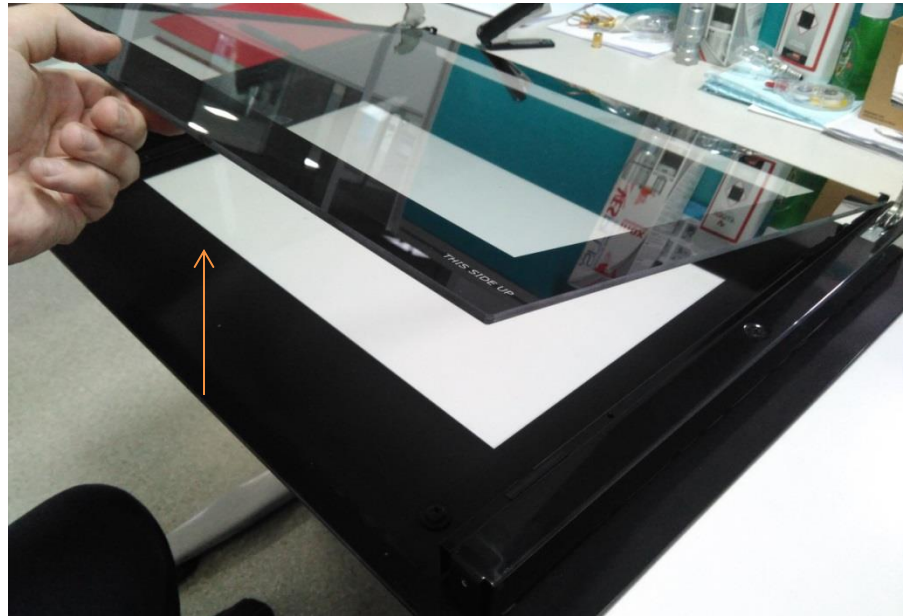


FILE	ISSUE DATE	PREPARED BY	CONTROLLED BY	APPROVED BY
\\manfile\PISIRICICHAZLARFAB\Urun Audit\MÜŞTERİ DESTEK\SERVIS KILAVUZU\Servis kılavuzu	22.03.2017	Ali TUNA		

Unscrew as below to disassemble door profile.

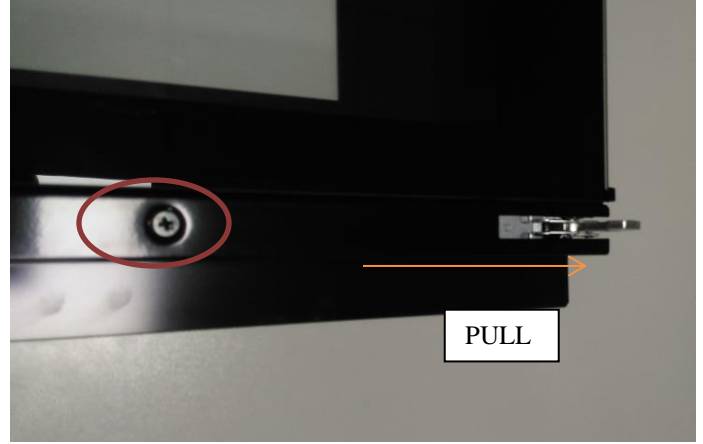


Remove inner glass as below.



FILE	ISSUE DATE	PREPARED BY	CONTROLLED BY	APPROVED BY
\\manfile\PISIRICICHAZLARFAB\Ur un Audit\MÜŞTERİ DESTEK\SERVIS KILAVUZU\Servis kılavuzu	22.03.2017	Ali TUNA		

Remove hinge as below



Remove handle as below



FILE	ISSUE DATE	PREPARED BY	CONTROLLED BY	APPROVED BY
\\manfile\PISIRICICHAZLARFAB\Urun Audit\MÜŞTERİ DESTEK\SERVIS KILAVUZU\Servis kılavuzu	22.03.2017	Ali TUNA		

Changing full glass door hinges



OR



FILE	ISSUE DATE	PREPARED BY	CONTROLLED BY	APPROVED BY
\\manfile\PISIRICICHAZLARFAB\Ur un Audit\MÜŞTERİ DESTEK\SERVIS KILAVUZU\Servis kılavuzu	22.03.2017	Ali TUNA		

**Disassembly Of Fan Cover**

Unscrews the screws which are shown as below



FILE	ISSUE DATE	PREPARED BY	CONTROLLED BY	APPROVED BY
\\manfile\PISIRICICHAZLARFAB\Ur un Audit\MÜŞTERİ DESTEK\SERVIS KILAVUZU\Servis kılavuzu	22.03.2017	Ali TUNA		

**Disassembly Of Catalytic Shelf**

Unscrews six screws which are shown as below

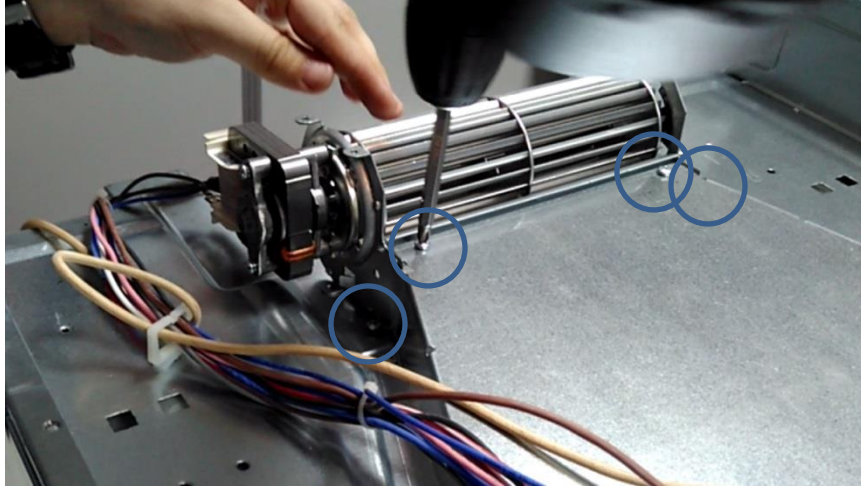


FILE	ISSUE DATE	PREPARED BY	CONTROLLED BY	APPROVED BY
\\manfile\PISIRICICHAZLARFAB\Ur un Audit\MÜŞTERİ DESTEK\SERVIS KILAVUZU\Servis kılavuzu	22.03.2017	Ali TUNA		

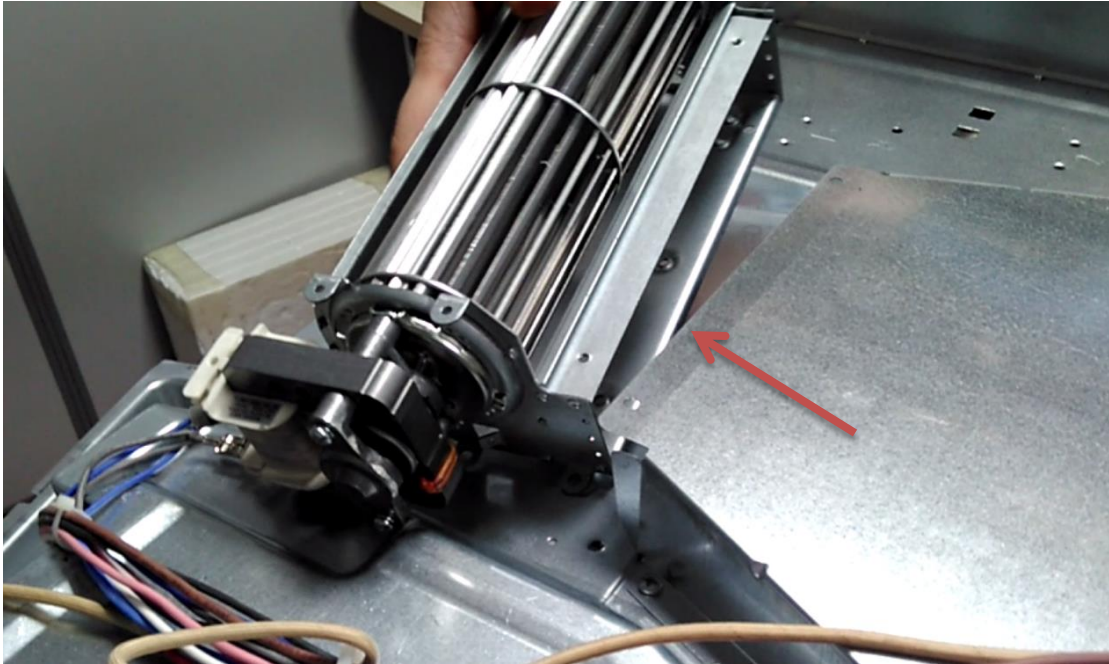


**Disassembly Of Cooling Fan**

unscrew which are shown inside circles.



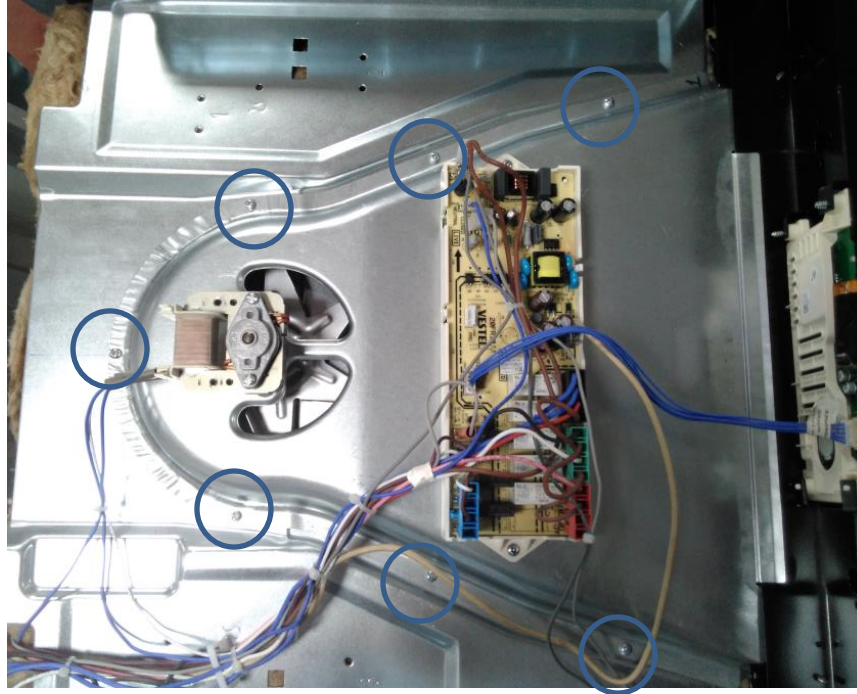
Pull the motor to below direction and remove



FILE	ISSUE DATE	PREPARED BY	CONTROLLED BY	APPROVED BY
\\manfile\PISIRICICHAZLARFAB\Ur un Audit\MÜŞTERİ DESTEK\SERVIS KILAVUZU\Servis kılavuzu	22.03.2017	Ali TUNA		

**Disassembly of new design cooling fan**

unscrew which are shown inside circles.



Detach the nut by turning counterclockwise

Unscrew and free cooling fan



FILE	ISSUE DATE	PREPARED BY	CONTROLLED BY	APPROVED BY
\\manfile\PISIRICICHAZLARFAB\Ur un Audit\MÜŞTERİ DESTEK\SERVIS KILAVUZU\Servis kılavuzu	22.03.2017	Ali TUNA		

**Disassembly Of Upper Heater**

Remove wiring connections from rear side.



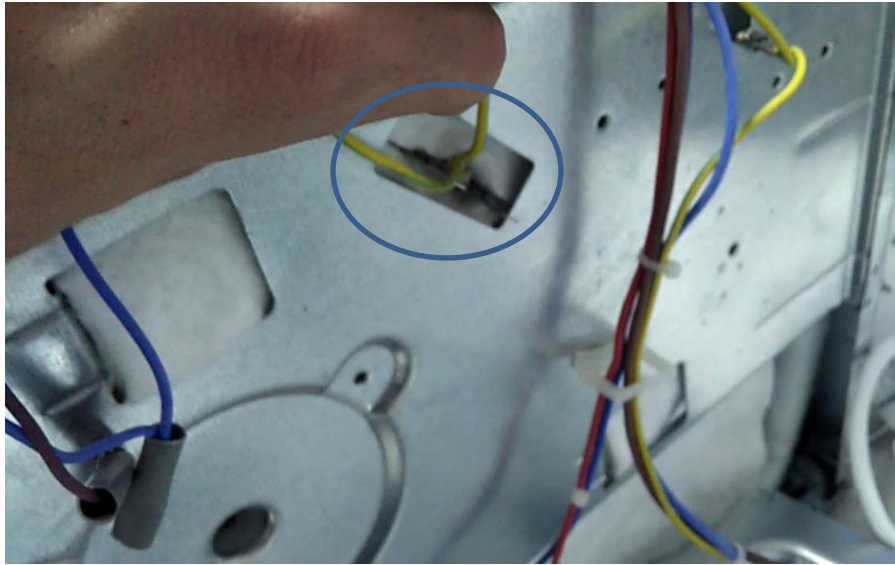
Unscrew which are shown inside circles.



FILE	ISSUE DATE	PREPARED BY	CONTROLLED BY	APPROVED BY
\\manfile\PISIRICICHAZLARFAB\Urun Audit\MÜŞTERİ DESTEK\SERVIS KILAVUZU\Servis kılavuzu	22.03.2017	Ali TUNA		

**Disassembly Of Ring Heater**

Remove wiring connections from rear side



Unscrew which are shown inside circles.



FILE	ISSUE DATE	PREPARED BY	CONTROLLED BY	APPROVED BY
\\manfile\PISIRICICHAZLARFAB\Urun Audit\MÜŞTERİ DESTEK\SERVIS KILAVUZU\Servis kılavuzu	22.03.2017	Ali TUNA		

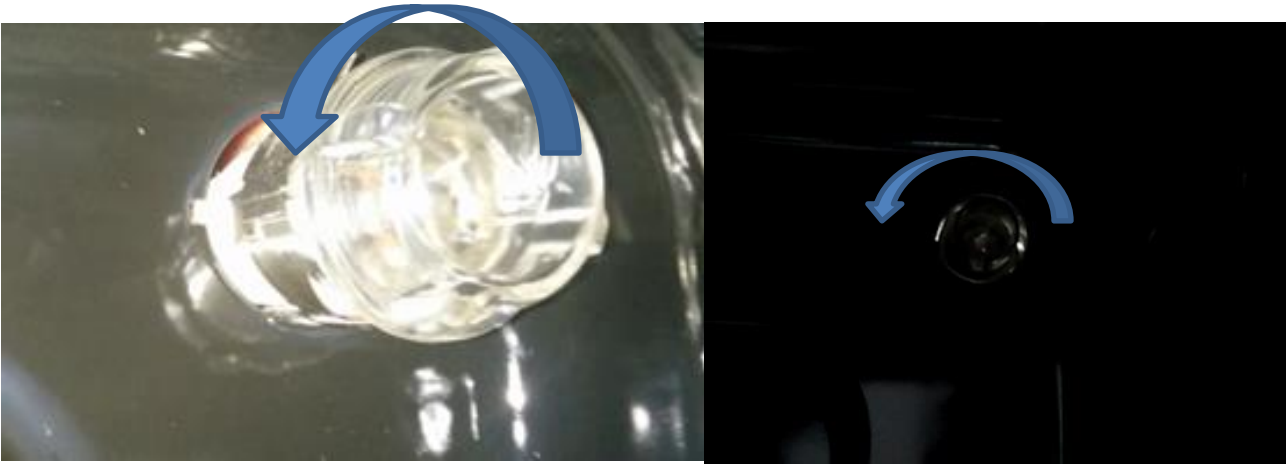
**Disassembly Of Oven Light Group.**

Remove wiring connections and push the clips. After that push lamp to inside of cavity.



**Disassembly Of Only Bulb**

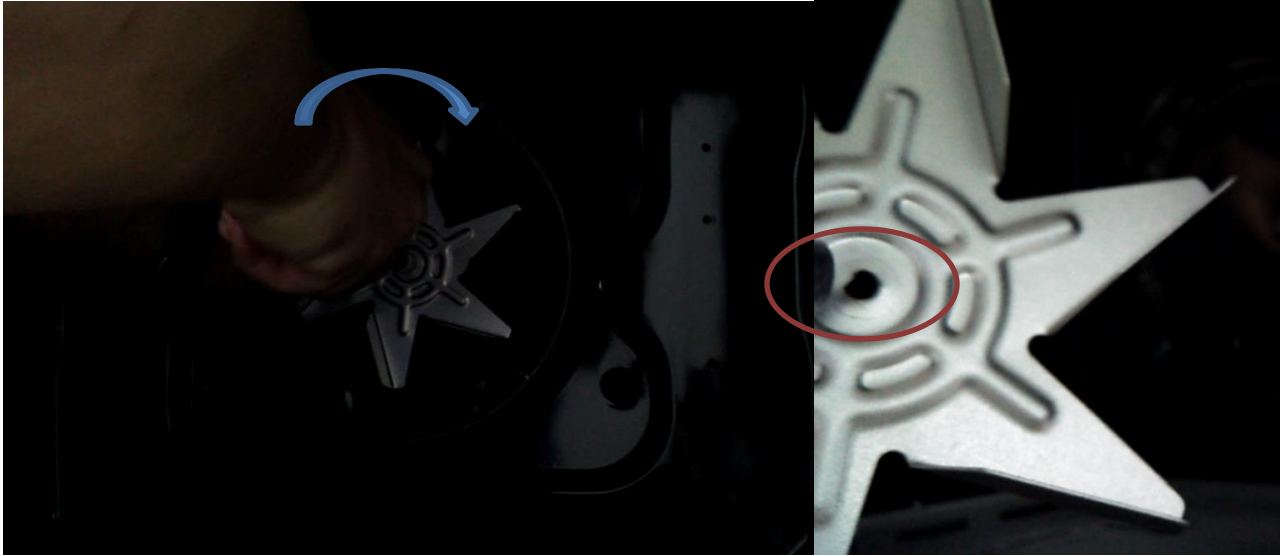
Remove the cover by turning as below direction and remove bulb as same.



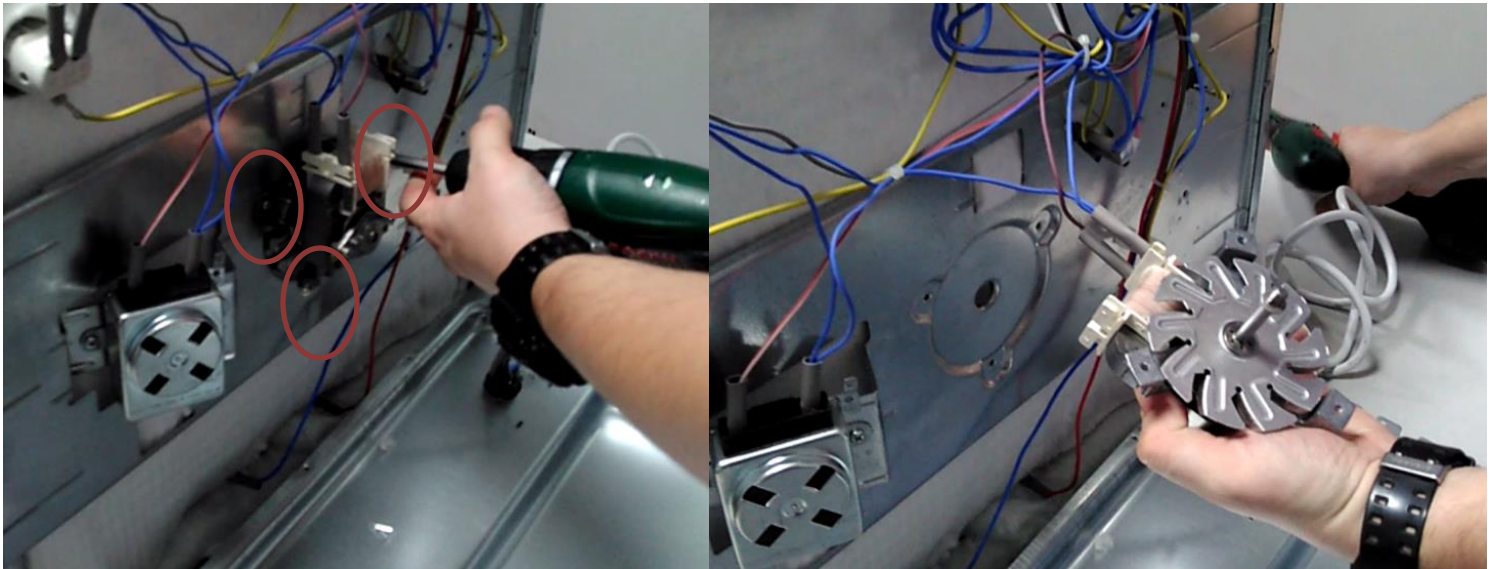
FILE	ISSUE DATE	PREPARED BY	CONTROLLED BY	APPROVED BY
\\manfile\PISIRICICHAZLARFAB\Urun Audit\MÜŞTERİ DESTEK\SERVIS KILAVUZU\Servis kılavuzu	22.03.2017	Ali TUNA		

**Disassembly Of Fan Motor**

Disassemble the nut as below direction to remove, for assembling, be careful about "D" form.



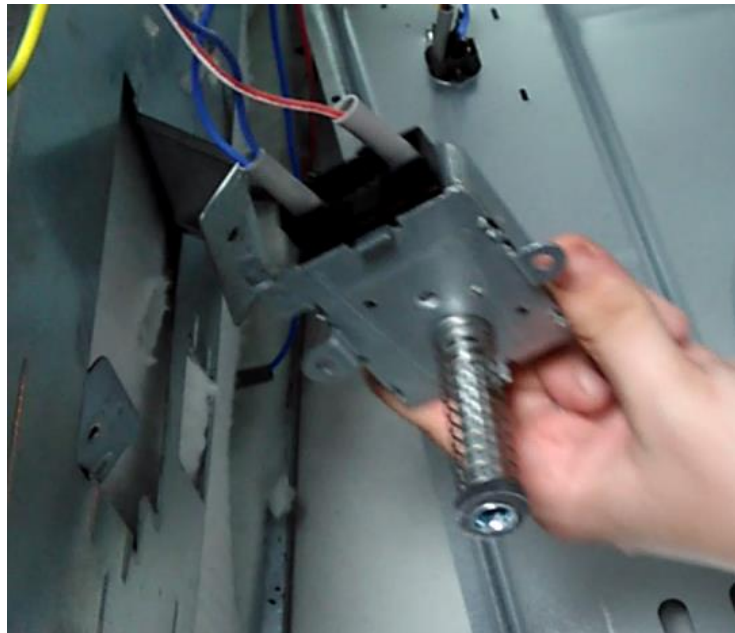
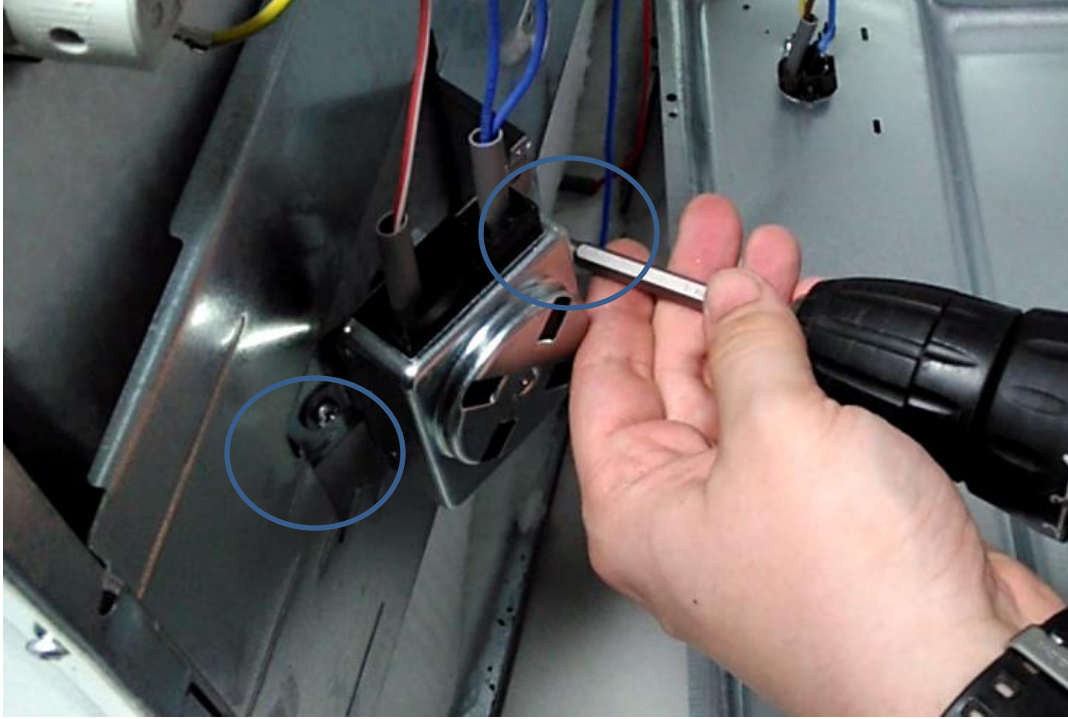
After that, remove the screws which hold fan motor.



FILE	ISSUE DATE	PREPARED BY	CONTROLLED BY	APPROVED BY
\\manfile\PISIRICICHAZLARFAB\Urun Audit\MÜŞTERİ DESTEK\SERVIS KILAVUZU\Servis kılavuzu	22.03.2017	Ali TUNA		

**Dissassembly Of Turnspit Motor**

Remove the screws as below.



FILE	ISSUE DATE	PREPARED BY	CONTROLLED BY	APPROVED BY
\\manfile\PISIRICICHAZLARFAB\Un Audit\MÜŞTERİ DESTEK\SERVIS KILAVUZU\Servis kılavuzu	22.03.2017	Ali TUNA		