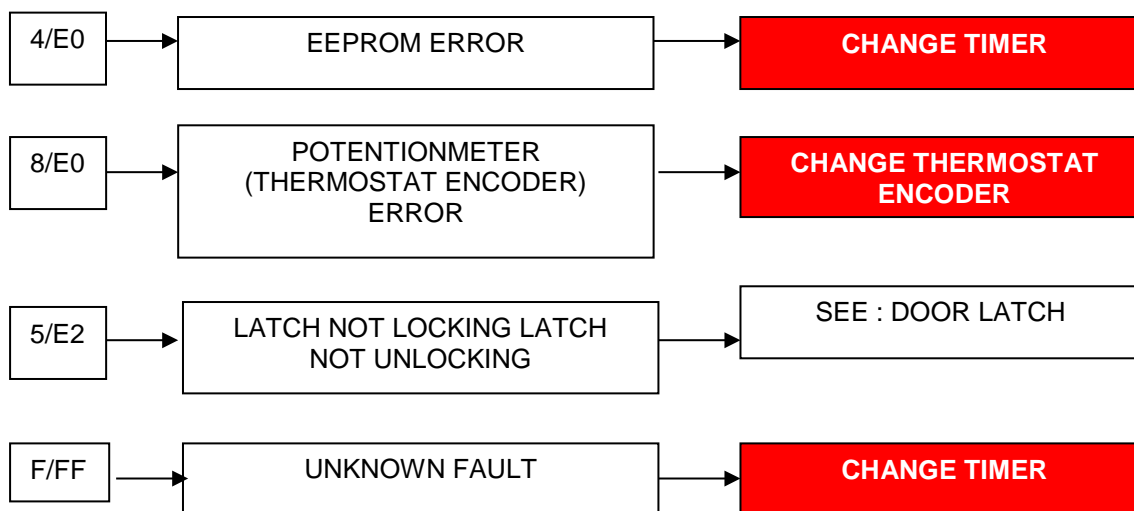
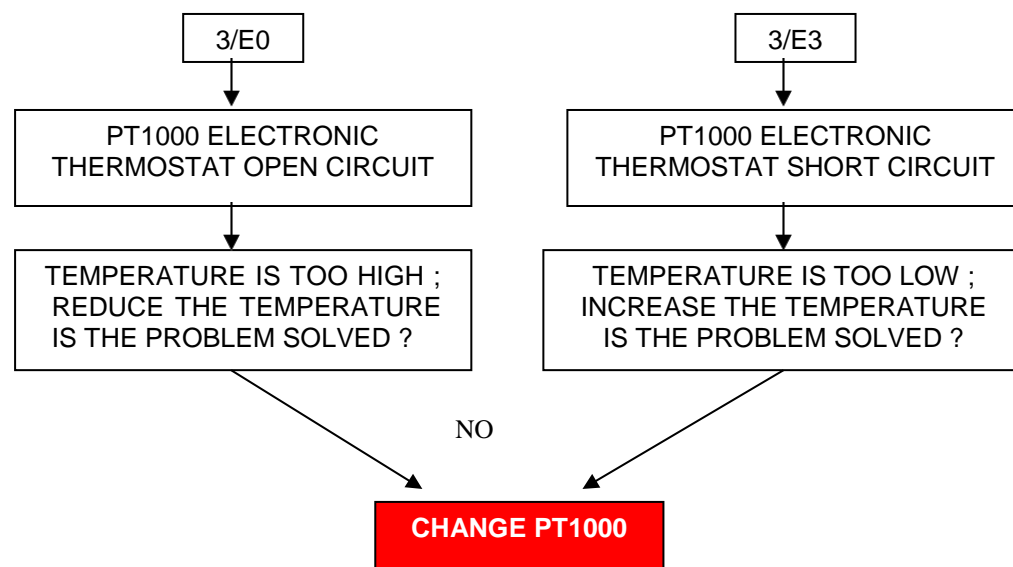
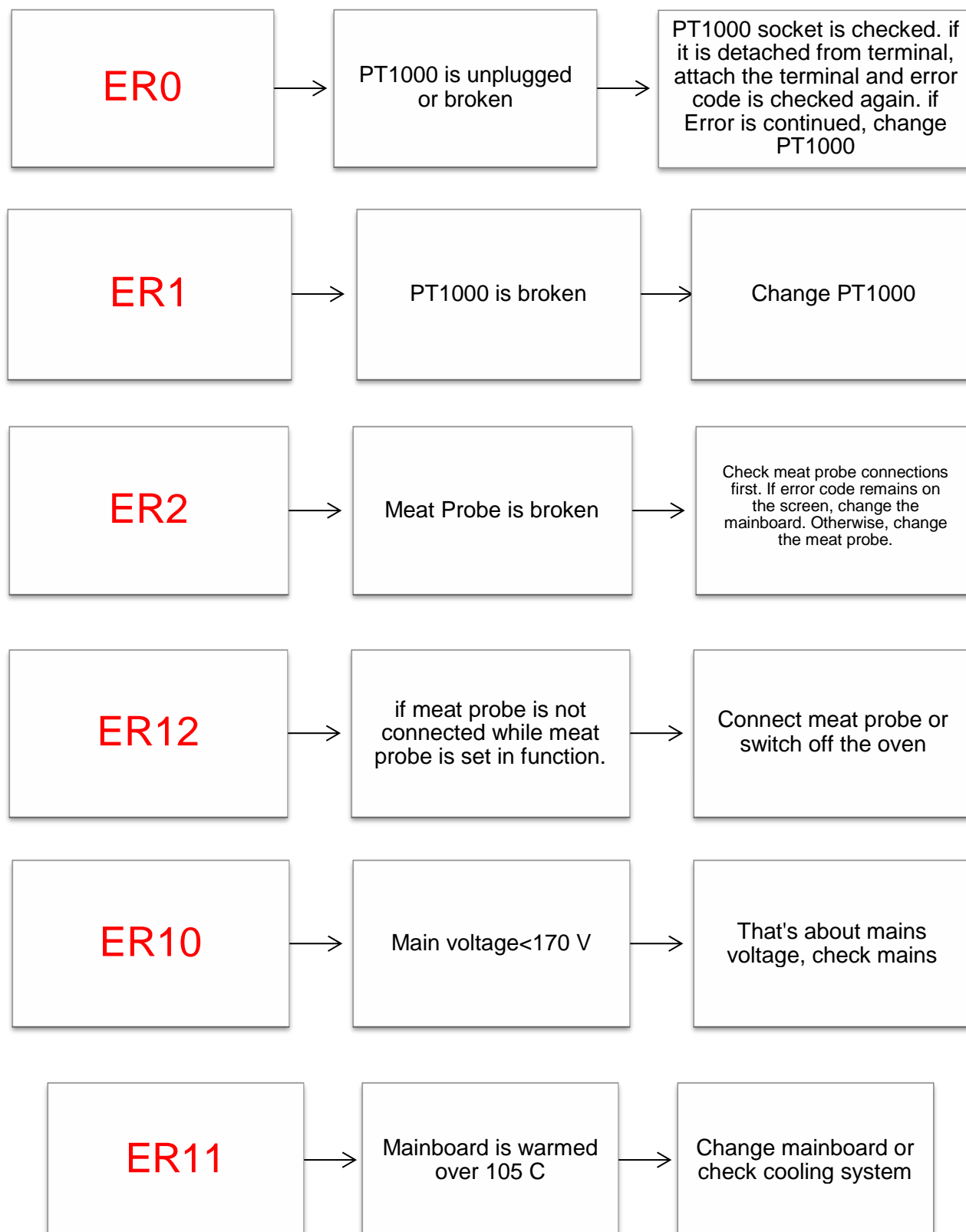


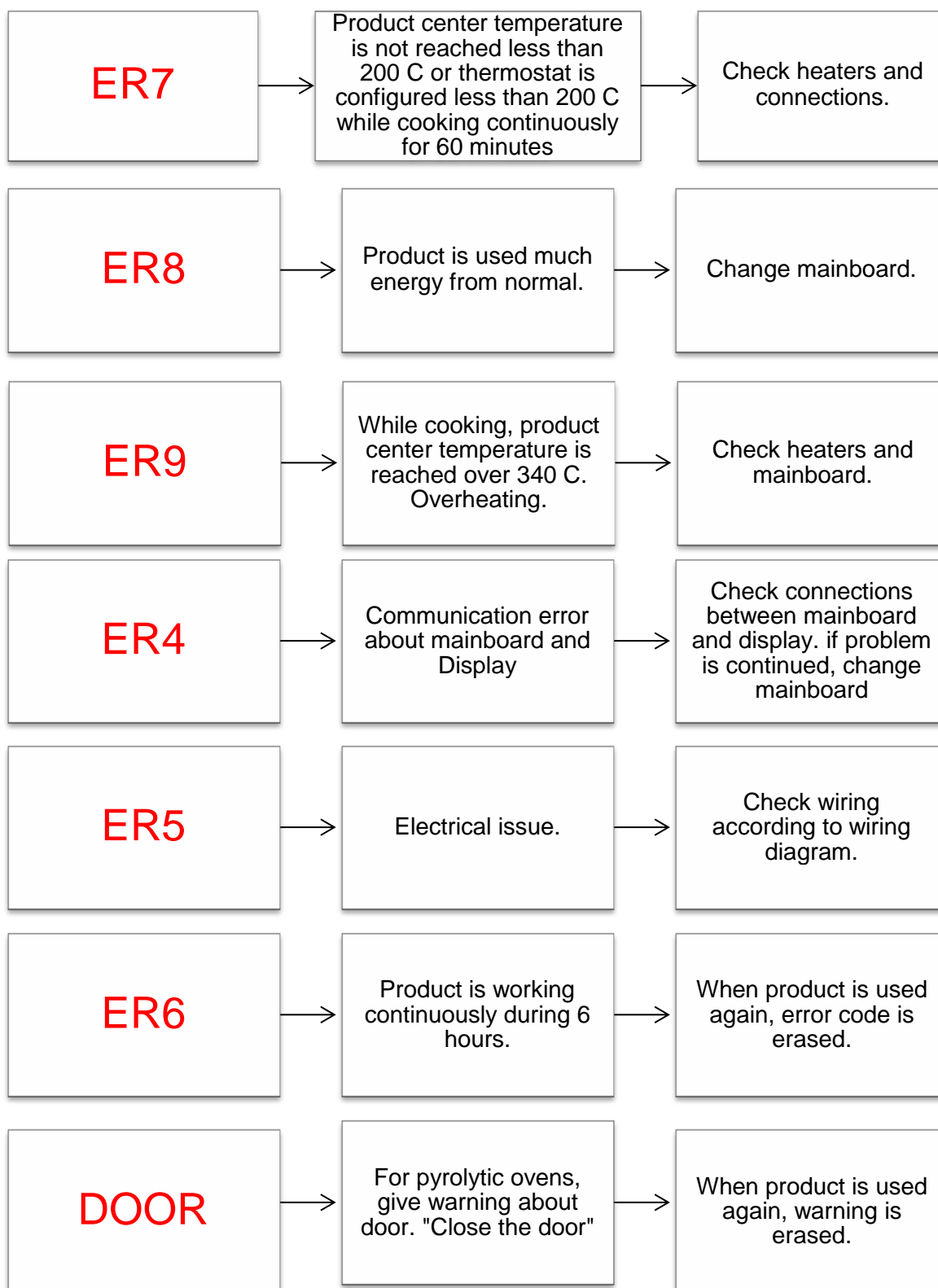
## DISPLAY ( ELECTRONIC CONTROL ) ERROR CODES

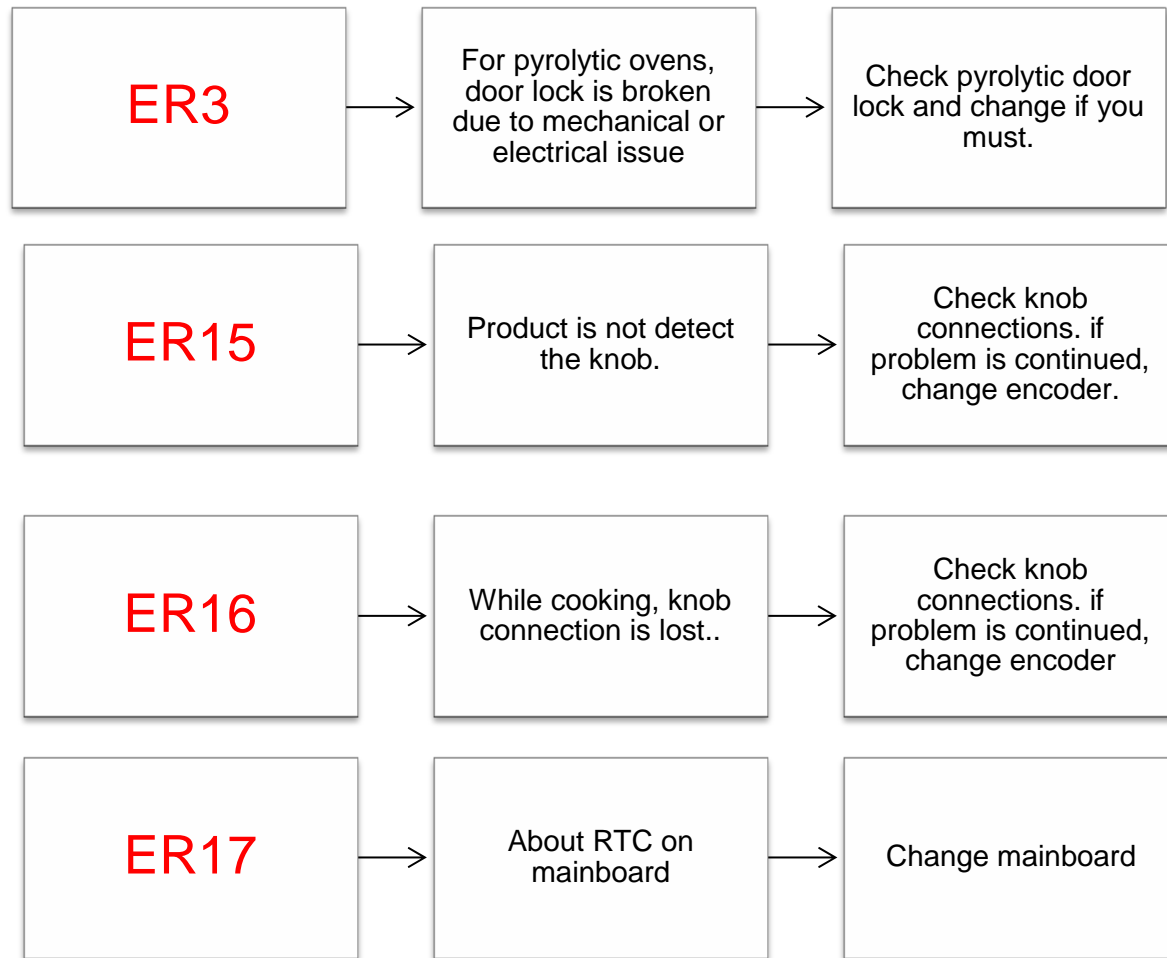


If product use vestel mainboard;

## OVEN ERROR CODES:



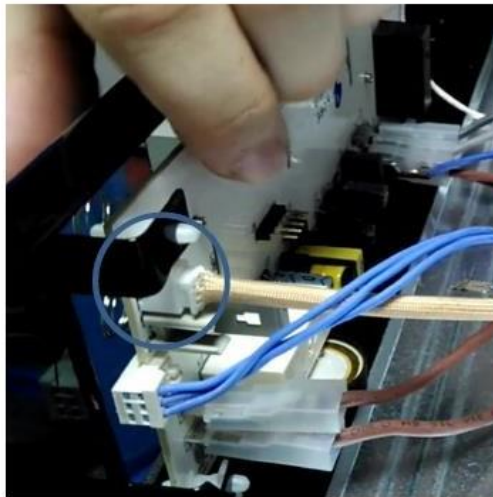




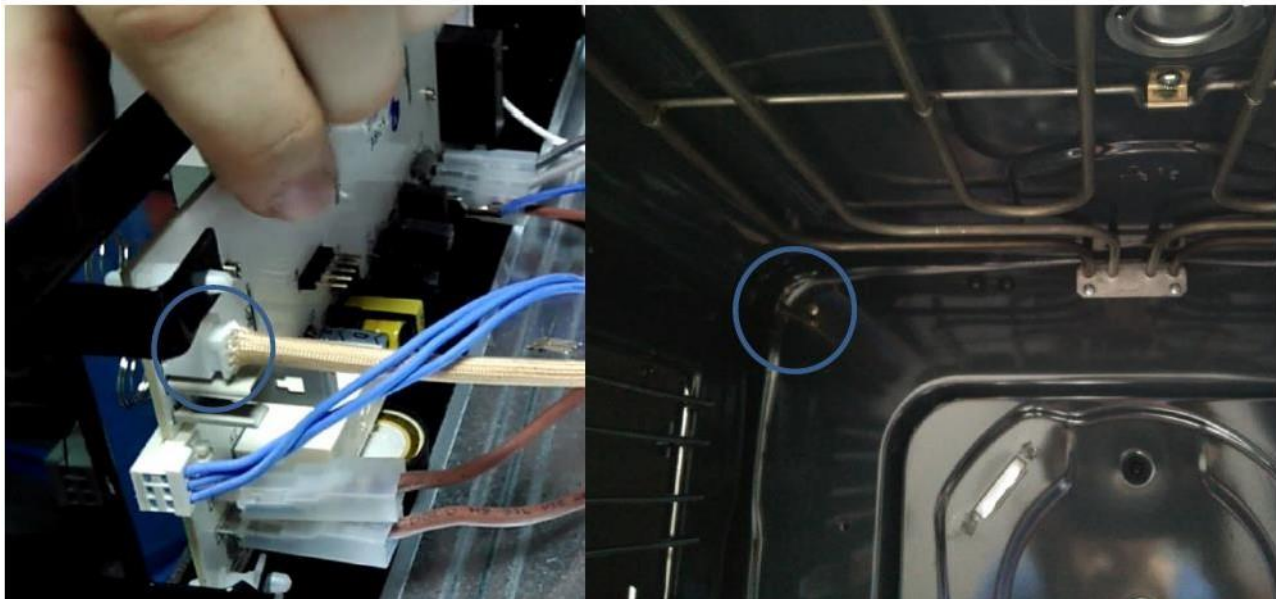
## Changing Visio Touch Control Panels / Visio Touch Error Codes

**ER1:** There is a fault with the pt1000 sensor (circuit, sensor or cable) that detects the internal temperature of the oven.

1. Check PT1000 connections at display.



2. Remove PT1000 from Visio touch and unscrew the bulb from cavity as below.



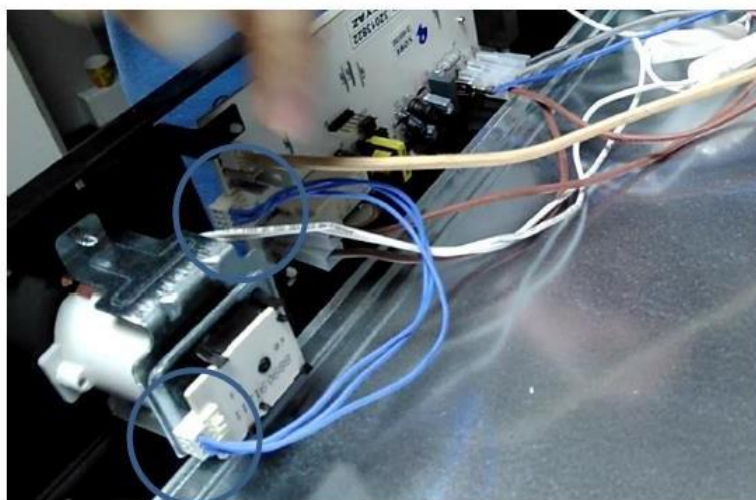
# MANUEL DE SERVICE DU FOUR PYROLYTIQUE

3. If problem is not solved, change visio touch. Remove the visio touch by using nippers



**ER2:** Error about encoder of thermostat

Check encoder wiring





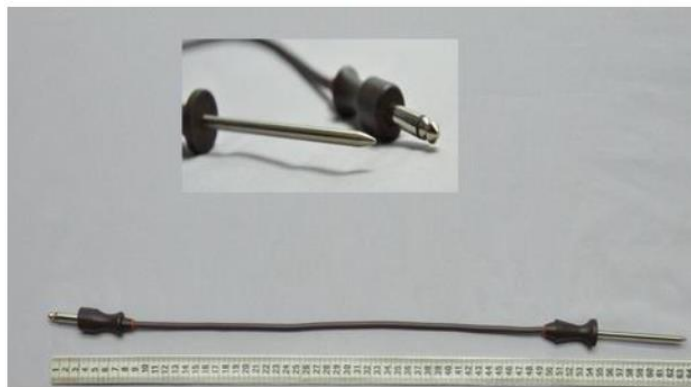
# MANUEL DE SERVICE DU FOUR PYROLYTIQUE

Change encoder cable . if problem not solved, change encoder itself.



## ER3: Error about Meat Probe

Check wiring of meat probe or encoder connections. if problem not solved, change meat probe, if error still continues, change encoder.



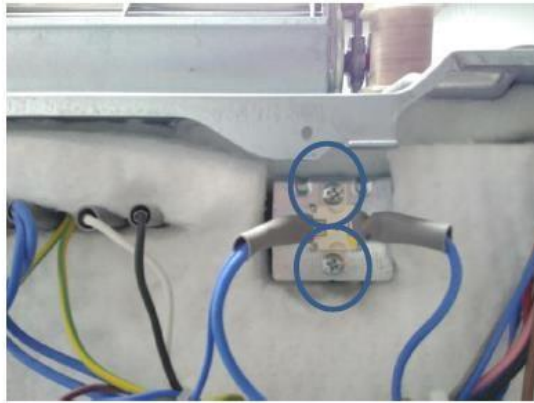
# MANUEL DE SERVICE DU FOUR PYROLYTIQUE

If there is a temporary disconnection when Er 1, Er 2 or Er 3 occurs, the "-" and "+" keys can be pressed together to bring the oven to ready status. If the fault is not temporary, the electronic circuit must be repaired.

**ER4:** Oven temperature is higher than 350 degrees.

When Er 4 is formed, the oven can be used again by pressing the "-" and "+" keys together when the oven temperature falls below 260 ° C.

If temperature is not decreased, change limit thermostat.



If limit thermostat is active, check PT1000 and encoder of thermostat, if you find a problem change the part.

**ER5:** While manual cooking and cooking with meat probe, there is a maximum cooking time. If function is not changed for 3 hours, heaters will be stopped and error code is shown on display.

When Er 5 is formed, the oven can be ready to use again by pressing the "-" and "+" keys together

**ER6:** If door lock is not detected when the door is locked, the resistances are disabled and the error condition is indicated.

Check door lock connections, change door lock or cables. if the problem not solved, change Visio Touch



## **BUILT IN OVEN SERVICE MANUAL**

---

### **DEMO(SHOP) MODE: ACTIVATING/DEACTIVATING**

This process can be changed related to control panel type.

#### **MONOCHROME MODELS:**

When the product is working (not in the standby mode) “Back” and “OK” should be touched together for activating/deactivating DEMO mode.

#### **VISIO TOUCH MODELS:**

When the product is working (not in the standby mode) “M” and “+”, “-” should be touched together.

#### **FULL TOUCH MODELS:**

When the product is working (not in the standby mode) “P” and “Thermostat” should be touched together.

#### **LED SLIM TOUCH MODELS:**

When the product is working (not in the standby mode) “Mode” and “Thermostat” should be touched together for 3 seconds.

#### **SMART/READY COOK MODELS:**

While product is working (not in the standby mode) left knob is turned right 5 times. After that, right knob is turned left 5 times. Next, right knob is pushed 1 time and left knob is pushed 1 time.

#### **DIGITAL TIMER MODELS:**

- For activating demo/shop mode; in 1 minute when the electricity is first connected, “Mode” and “-” should be pressed together for 5 seconds.
- For deactivating demo/shop mode; “Mode” and “-” should be pressed together for 5 seconds (product shouldn't be in stand-by mode).