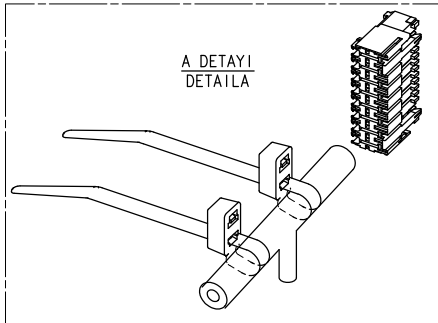
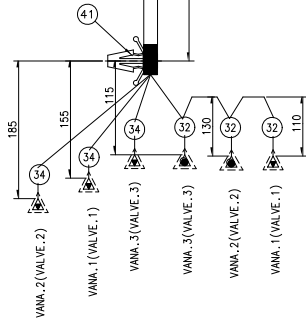
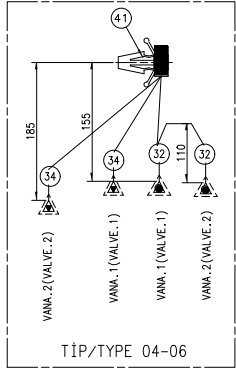
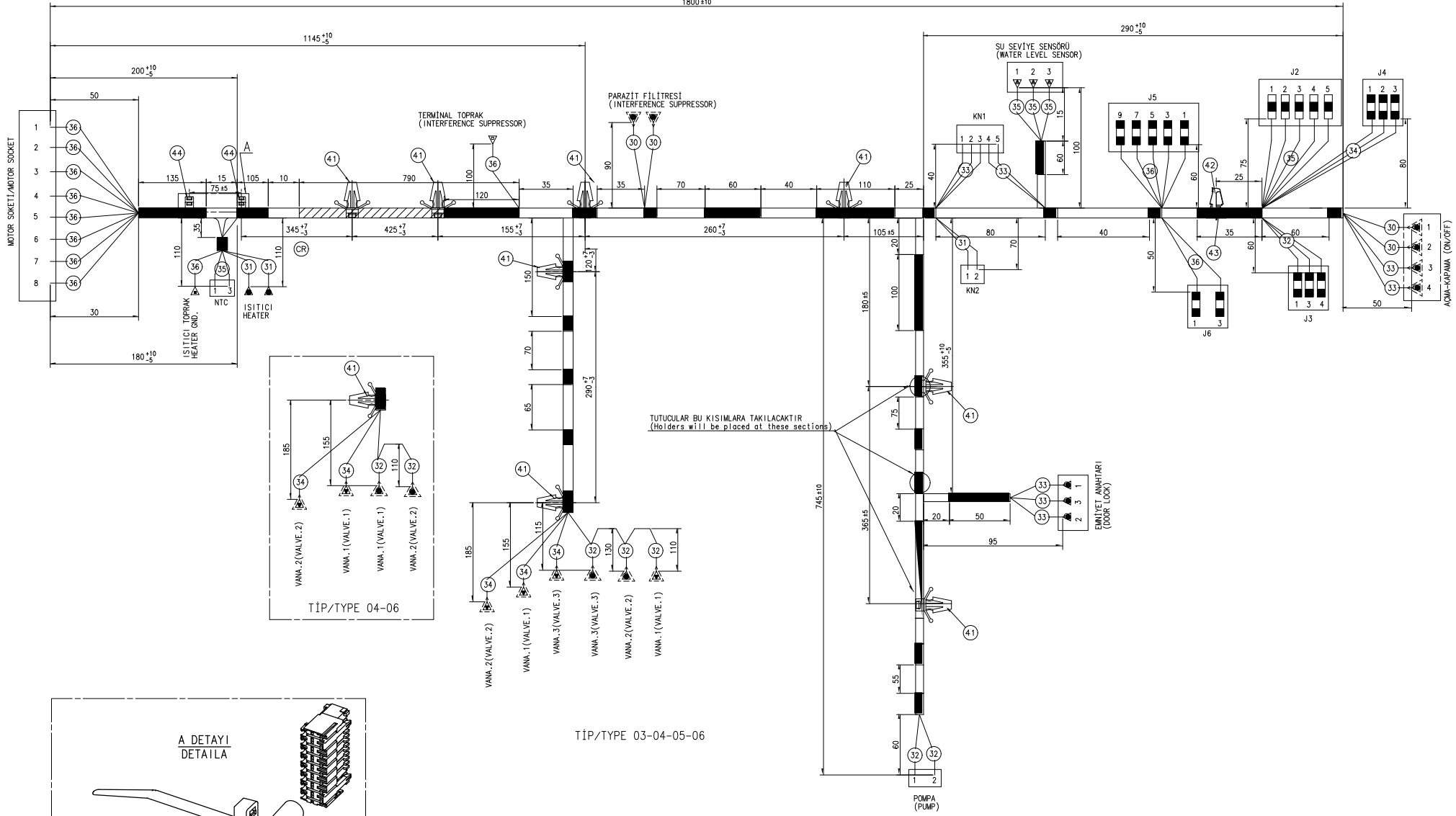


TIP/TYPE 01-02

- NOT:
- 1- Kablo kesitleri aksi belirtilmedikçe 0.75mm<sup>2</sup> dir.
  - 2- Kablo boy ölçülerine 6mm sıyrılmış kısımlar dahildir.
  - 3- PVC kablo dış kılıf malzemesi UL94V-0 Standartına uygun olmalıdır.
  - 4- PVC kablolar TS-6570 ve TS-9758'e uygun olmalıdır.
  - 5- Ölçüsü verilen aralık ve bantaj ölçüleri 15mm dir.
  - 6- Sembolü görülen yerler beyaz renkli 15mmlik bantajlardır.

- NOT:
- 1- Cable sections are 0.75mm<sup>2</sup> unless specified otherwise.
  - 2- Cable length measurements include 6mm stripped sections.
  - 3- Outer cover material of PVC cable must be compatible with UL94V-0 standard.
  - 4- PVC cables must be compatible with TS-6570 and TS-9758 standards.
  - 5- Ungiven bandage measurements are 15mm.
  - 6- The sections with the symbol \* are the 15mm width white bandage.

10	09	08	07	06	05	04	03	02	01	REF	YERİ ve RENGİ	LOCATION AND COLOUR
*	*	*	*	*	*	*	*	*	*	3000	(PARAZIT FİLTRESİ-ON/OFF.1) 1mm <sup>2</sup> GRİ	(INT.SUPP.FILTER-ON/OFF.1) 1mm <sup>2</sup> GRAY
*	*	*	*	*	*	*	*	*	*	3001	(PARAZIT FİLTRESİ-ON/OFF.2) 1mm <sup>2</sup> GRİ	(INT.SUPP.FILTER-ON/OFF.2) 1mm <sup>2</sup> GRAY
*	*	*	*	*	*	*	*	*	*	3002		
*	*	*	*	*	*	*	*	*	*	3100	(KN2.1-ISITICI.1) 1mm <sup>2</sup> GRİ	(KN2.1-HEATER.1) 1mm <sup>2</sup> GRAY
*	*	*	*	*	*	*	*	*	*	3101	(KN2.2-ISITICI.2) 1mm <sup>2</sup> GRİ	(KN2.2-HEATER.2) 1mm <sup>2</sup> GRAY
*	*	*	*	*	*	*	*	*	*	3200	(J3.4-VANA.3-VANA.2-VANA.1) 0.35mm <sup>2</sup> BEYAZ	(J3.4-VALVE3-VALVE2-VALVE1) 0.35mm <sup>2</sup> WHITE
*	*	*	*	*	*	*	*	*	*	3202	(J3.3-POMPA) 0.50mm <sup>2</sup> KIRMIZI	(J3.3-PUMP) 0.50mm <sup>2</sup> RED
*	*	*	*	*	*	*	*	*	*	3206	(J3.1-POMPA) 0.50mm <sup>2</sup> KIRMIZI	(J3.1-PUMP) 0.50mm <sup>2</sup> RED
*	*	*	*	*	*	*	*	*	*	3201	(J3.4-VANA.2-VANA.1) 0.35mm <sup>2</sup> BEYAZ	(J3.4-VALVE.2-VALVE.1) 0.35mm <sup>2</sup> WHITE
*	*	*	*	*	*	*	*	*	*	3203	(J3.3-POMPA) 0.50mm <sup>2</sup> KIRMIZI	(J3.3-PUMP) 0.50mm <sup>2</sup> RED
*	*	*	*	*	*	*	*	*	*	3204	(J3.1-POMPA) 0.50mm <sup>2</sup> KIRMIZI	(J3.1-PUMP) 0.50mm <sup>2</sup> RED
*	*	*	*	*	*	*	*	*	*	3300	(KN1.1-KAPİ SOKETİ.3) 1mm <sup>2</sup> GRİ	(KN1.1-DOOR LOCK.3) 1mm <sup>2</sup> GRAY
*	*	*	*	*	*	*	*	*	*	3301	(KN1.2-KAPİ SOKETİ.1) YEŞİL-KIRMIZI	(KN1.2-DOOR LOCK.1) GREEN-RED
*	*	*	*	*	*	*	*	*	*	3302	(KN1.5-KAPİ SOKETİ.2) 1mm <sup>2</sup> KIRMIZI	(KN1.5-DOOR LOCK.2) 1mm <sup>2</sup> RED
*	*	*	*	*	*	*	*	*	*	3303	(KN1.4-ON/OFF.3) 1mm <sup>2</sup> TURUNCU	(KN1.4-ON/OFF.3) 1mm <sup>2</sup> ORANGE
*	*	*	*	*	*	*	*	*	*	3304	(KN1.5-ON/OFF.4) 1mm <sup>2</sup> TURUNCU	(KN1.5-ON/OFF.4) 1mm <sup>2</sup> ORANGE
*	*	*	*	*	*	*	*	*	*	3400	(J4.3-VANA.1) 0.35mm <sup>2</sup> MAVİ	(J4.3-VALVE.1) 0.35mm <sup>2</sup> BLUE
*	*	*	*	*	*	*	*	*	*	3402	(J4.2-VANA.2) 0.35mm <sup>2</sup> SARİ	(J4.2-VALVE.2) 0.35mm <sup>2</sup> YELLOW
*	*	*	*	*	*	*	*	*	*	3404	(J4.1-VANA.3) 0.35mm <sup>2</sup> KIRMIZI	(J4.1-VALVE.3) 0.35mm <sup>2</sup> RED
*	*	*	*	*	*	*	*	*	*	3401	(J4.2-VANA.2) 0.35mm <sup>2</sup> SARİ	(J4.2-VALVE.2) 0.35mm <sup>2</sup> YELLOW
*	*	*	*	*	*	*	*	*	*	3405	(J4.3-VANA.1) 0.35mm <sup>2</sup> MAVİ	(J4.3-VALVE.1) 0.35mm <sup>2</sup> BLUE
*	*	*	*	*	*	*	*	*	*	3501	(J2.1-SU SEVİYE SENSÖRÜ.3) 0.35mm <sup>2</sup> BEYAZ	(J2.1-WATER LEVEL SENSOR.3) 0.35mm <sup>2</sup> WHITE
*	*	*	*	*	*	*	*	*	*	3502	(J2.2-SU SEVİYE SENSÖRÜ.1) 0.35mm <sup>2</sup> TURUNCU	(J2.2-WATER LEVEL SENSOR.1) 0.35mm <sup>2</sup> ORANGE
*	*	*	*	*	*	*	*	*	*	3503	(J2.3-SU SEVİYE SENSÖRÜ.2) 0.35mm <sup>2</sup> PİNK	(J2.3-WATER LEVEL SENSOR.2) 0.35mm <sup>2</sup> PINK
*	*	*	*	*	*	*	*	*	*	3600	(J2.4-NTC.1) 0.35mm <sup>2</sup> YEŞİL	(J2.4-NTC.1) 0.35mm <sup>2</sup> GREEN
*	*	*	*	*	*	*	*	*	*	3601	(J2.5-NTC.3) 0.35mm <sup>2</sup> YEŞİL	(J2.5-NTC.3) 0.35mm <sup>2</sup> GREEN
*	*	*	*	*	*	*	*	*	*	3600	(J5.9-MOTOR SOKETİ.1) KAHVE-BEYAZ	(J5.9-MOTOR SOCKET.1) BROWN-WHITE
*	*	*	*	*	*	*	*	*	*	3602	(J5.5-MOTOR SOKETİ.2) MOR-BEYAZ	(J5.5-MOTOR SOCKET.2) PURPLE-WHITE
*	*	*	*	*	*	*	*	*	*	3604	(J5.7-MOTOR SOKETİ.3) KIRMIZI-BEYAZ	(J5.7-MOTOR SOCKET.3) RED-WHITE
*	*	*	*	*	*	*	*	*	*	3603	(J5.1-MOTOR SOKETİ.4) MOR-SARİ	(J5.1-MOTOR SOCKET.4) PURPLE-YELLOW
*	*	*	*	*	*	*	*	*	*	3605	(J5.3-MOTOR SOKETİ.5) YEŞİL-KIRMIZI	(J5.3-MOTOR SOCKET.5) GREEN-YELLOW
*	*	*	*	*	*	*	*	*	*	3606	(J6.1-MOTOR SOKETİ.6) 0.50mm <sup>2</sup> YEŞİL	(J6.1-MOTOR SOCKET.6) 0.50mm <sup>2</sup> GREEN
*	*	*	*	*	*	*	*	*	*	3607	(J6.3-MOTOR SOKETİ.7) 0.50mm <sup>2</sup> YEŞİL	(J6.3-MOTOR SOCKET.7) 0.50mm <sup>2</sup> GREEN
*	*	*	*	*	*	*	*	*	*	3608	(TERMINAL TOP.-ISITICI TOP.-MOTOR SOKETİ.8) 1mm <sup>2</sup> YEŞİL-SARİ	(INT.SUPP.GND-HEATER GND-MOTOR SOCKET.8) 1mm <sup>2</sup> GREEN-YELLOW
*	*	*	*	*	*	*	*	*	*	3602	(J5.9-MOTOR SOKETİ.1) 0.50mm <sup>2</sup> KAHVE	(J5.9-MOTOR SOCKET.1) 0.50mm <sup>2</sup> BROWN
*	*	*	*	*	*	*	*	*	*	3604	(J5.5-MOTOR SOKETİ.2) 0.50mm <sup>2</sup> PEMBE	(J5.5-MOTOR SOCKET.2) 0.50mm <sup>2</sup> PINK
*	*	*	*	*	*	*	*	*	*	3603	(J5.7-MOTOR SOKETİ.3) 0.50mm <sup>2</sup> KIRMIZI	(J5.7-MOTOR SOCKET.3) 0.50mm <sup>2</sup> RED
*	*	*	*	*	*	*	*	*	*	3605	(J5.1-MOTOR SOKETİ.4) 0.50mm <sup>2</sup> MOR	(J5.1-MOTOR SOCKET.4) 0.50mm <sup>2</sup> PURPLE
*	*	*	*	*	*	*	*	*	*	3606	(J5.3-MOTOR SOKETİ.5) 0.50mm <sup>2</sup> TURUNCU	(J5.3-MOTOR SOCKET.5) 0.50mm <sup>2</sup> ORANGE
*	*	*	*	*	*	*	*	*	*	3607	(J6.1-MOTOR SOKETİ.6) 0.50mm <sup>2</sup> YEŞİL	(J6.1-MOTOR SOCKET.6) 0.50mm <sup>2</sup> GREEN
*	*	*	*	*	*	*	*	*	*	3608	(TERMINAL TOP.-ISITICI TOP.-MOTOR SOKETİ.8) 0.50mm <sup>2</sup> YEŞİL-SARİ	(INT.SUPP.GND-HEATER GND-MOTOR SOCKET.8) GREEN-YELLOW
*	*	*	*	*	*	*	*	*	*	3601	(J5.5-MOTOR SOKETİ.2) 0.50mm <sup>2</sup> PEMBE	(J5.5-MOTOR SOCKET.2) 0.50mm <sup>2</sup> PINK
*	*	*	*	*	*	*	*	*	*	3603	(J5.7-MOTOR SOKETİ.3) 0.50mm <sup>2</sup> KIRMIZI	(J5.7-MOTOR SOCKET.3) 0.50mm <sup>2</sup> RED
*	*	*	*	*	*	*	*	*	*	3605	(J5.1-MOTOR SOKETİ.4) 0.50mm <sup>2</sup> MOR	(J5.1-MOTOR SOCKET.4) 0.50mm <sup>2</sup> PURPLE
*	*	*	*	*	*	*	*	*	*	3606	(J5.3-MOTOR SOKETİ.5) 0.50mm <sup>2</sup> TURUNCU	(J5.3-MOTOR SOCKET.5) 0.50mm <sup>2</sup> ORANGE
*	*	*	*	*	*	*	*	*	*	3607	(J6.1-MOTOR SOKETİ.6) 0.50mm <sup>2</sup> YEŞİL	(J6.1-MOTOR SOCKET.6) 0.50mm <sup>2</sup> GREEN
*	*	*	*	*	*	*	*	*	*	3608	(J6.3-MOTOR SOKETİ.7) 0.50mm <sup>2</sup> YEŞİL	(J6.3-MOTOR SOCKET.7) 0.50mm <sup>2</sup> GREEN
*	*	*	*	*	*	*	*	*	*	3609	(TERMINAL TOP.-ISITICI TOP.-MOTOR SOKETİ.8) 0.50mm <sup>2</sup> YEŞİL-SARİ	(INT.SUPP.GND-HEATER GND-MOTOR SOCKET.8.) GREEN-YELLOW

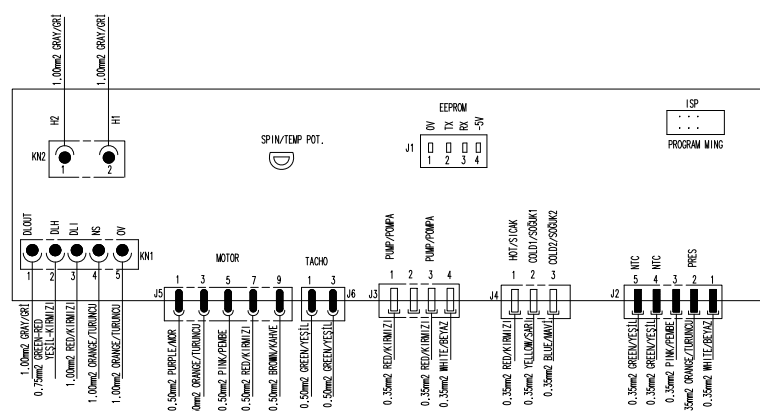


ADIM-KAPAMA (ON/OFF)

EMNİYET ANAHTARI (DOOR LOCK)

POMPA (PUMP)





**Drain Pump**  
Tahliye Pompa

Winding resistance : 75,6Ω (at 20°C, 68F)  
Thermic off : 115°C / 239F

**Double and Single Water Inlet Valves**  
Sıcak ve Soğuk Vanalar

Winding resistance :  
Blue: 3750Ω ±5 (at 20°C, 68F)  
T&P : 4100Ω ±5 (at 20°C, 68F)

**Water Level Sensor**  
Su Seviye Sensörü

Output frequency measured between pink and white cable resistance value 25,5kHz ±0,2

**NTC**

Resistance :  
15°C, 59F medium 74980 ±5  
20°C, 68F medium 59620 ±5  
25°C, 77F medium 47730 ±5

**ON-OFF Switch**  
Rating : 250V 16(4)A, 175

**Heating Element**  
Isıtıcı

Resistance :  
250 ± 20 (at 20°C, 68F)  
Thermic off : 167°C / 332F

**RF - Suppression Filter**  
Parazit Filtresi

Voltage Measurement between 1-2 terminals:  
208-240VAC

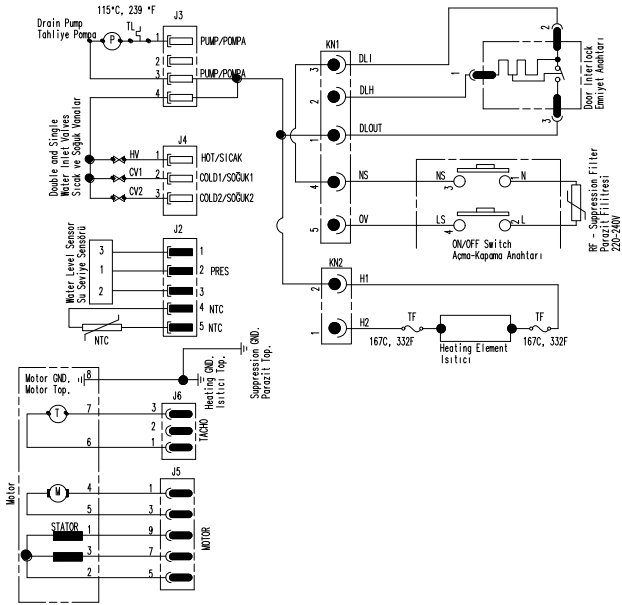
**Door Interlock**  
Emiyet Anahtarı

At unenergized condition, contact resistances:  
Between 1-3: 1000Ω ±100 (at 20°C, 68F)  
Between 1-2: Infinite resistance

**Main Motor**  
Motor

Stator Resistance :  
2-3 : 1,000 ±8  
Tacho Resistance :  
6-7 : 570 ±5

Note : Also, motor can be controlled by short circuiting the 2 and 4 terminals then applying AC line voltage to 3-5 terminals whether the motor is rotating or not. To be able to do this, motor should be removed from the machine.



**Motor**

Motor CHD. Top.  
Heating CHD. Isıtıcı Top.

**Suppression Filter**  
Parazit Filtresi

**Door Interlock**  
Emiyet Anahtarı

**Parazit Filtresi**

**ON/OFF Switch**  
Ama-Kapama Anahtarı

**Heating Element**  
Isıtıcı

Door Interlock  
Emiyet Anahtarı

RF - Suppression Filter  
Parazit Filtresi

208-240V